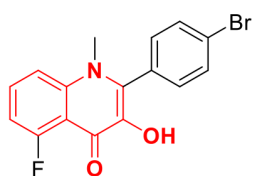
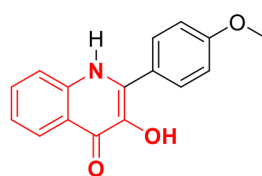


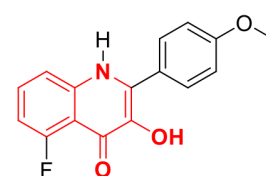
CMLD011870



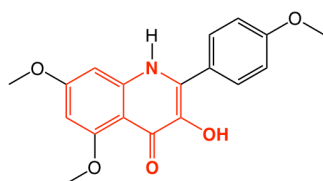
CMLD012686



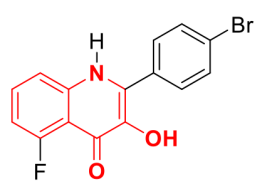
CMLD012725



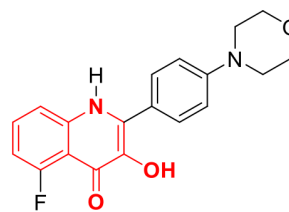
CMLD011874



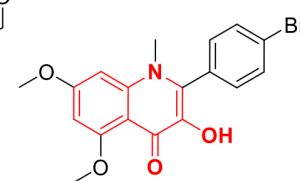
CMLD012661



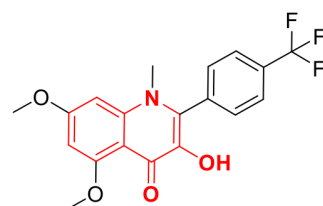
CMLD011875



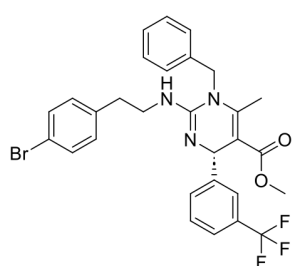
CMLD012670



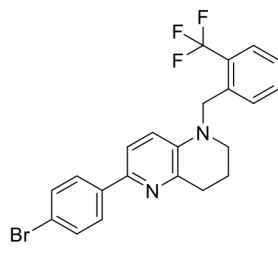
CMLD012693



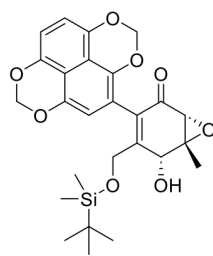
CMLD011896



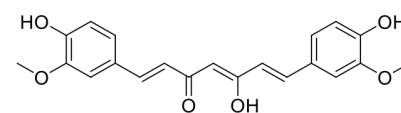
CMLD005197



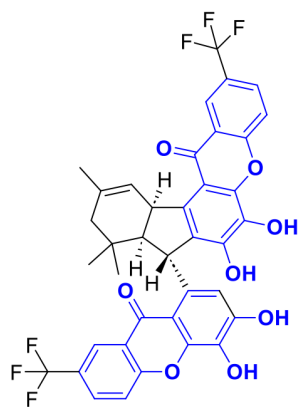
CMLD008299



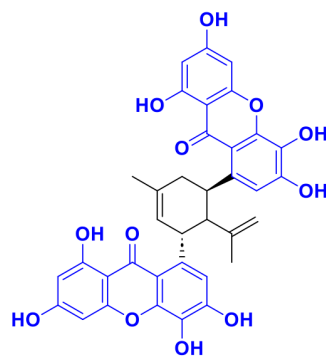
CMLD012789



CMLD011737

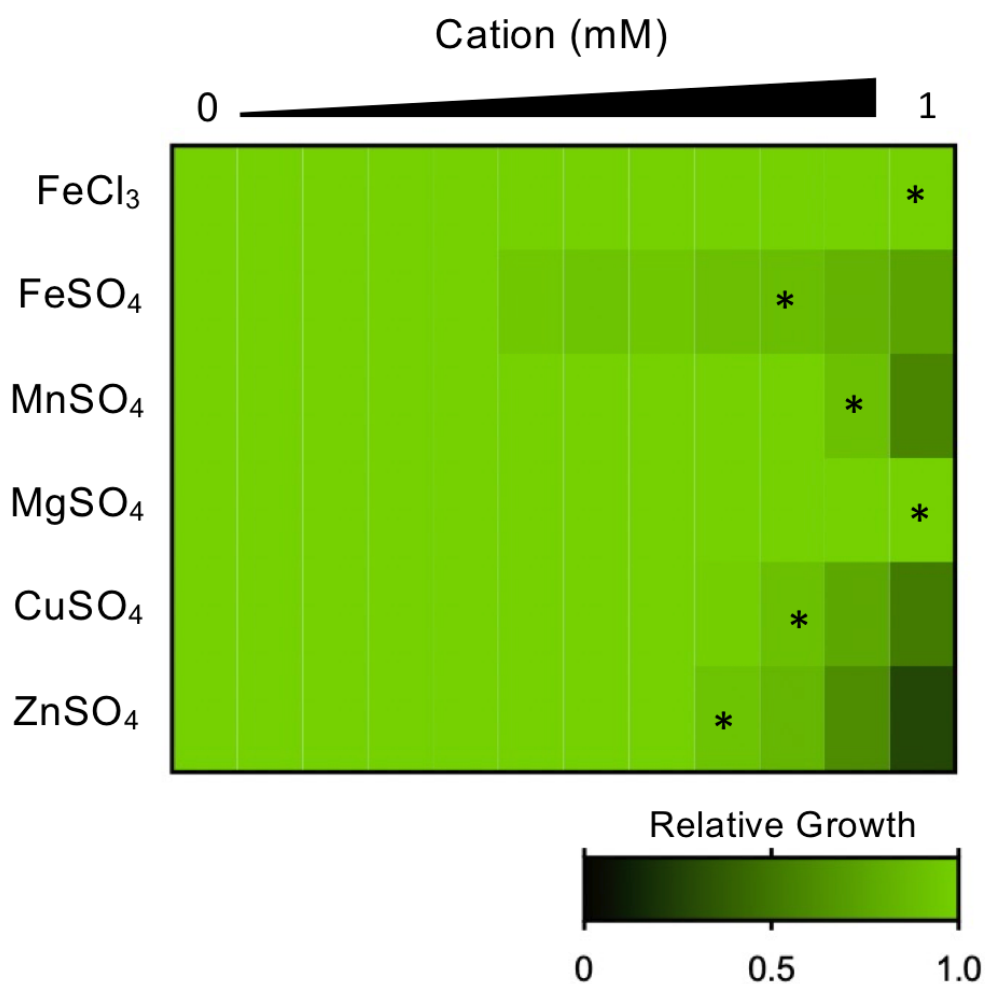


CMLD013219



CMLD013360

Supplemental Figure 1. Chemical structures of BU-CMD hit compounds. Red colour depicts compounds with a 3- hydroxyquinolinone scaffold. Blue colour depicts compounds with a dimeric xanthone scaffold.



Supplemental Figure 2. Dose response assays to determine the highest concentration of metal salt that does not significantly inhibit the growth of *C. albicans*. Dose-response assays with two-fold dilution gradients starting at 1 mM of FeCl₃, FeSO₄, MnSO₄, MgSO₄, CuSO₄, or ZnSO₄, in RPMI. Relative *C. albicans* growth was measured by absorbance at 600 nm (OD₆₀₀) after 48 hours at 30 °C. The maximal concentration of supplemental metal salt that did not have a significant inhibitory effect on growth (< 20% inhibition, indicated by asterisk) was chosen for subsequent media supplementation assays. Data plotted represent results from one of two biological replicates that yielded similar results.