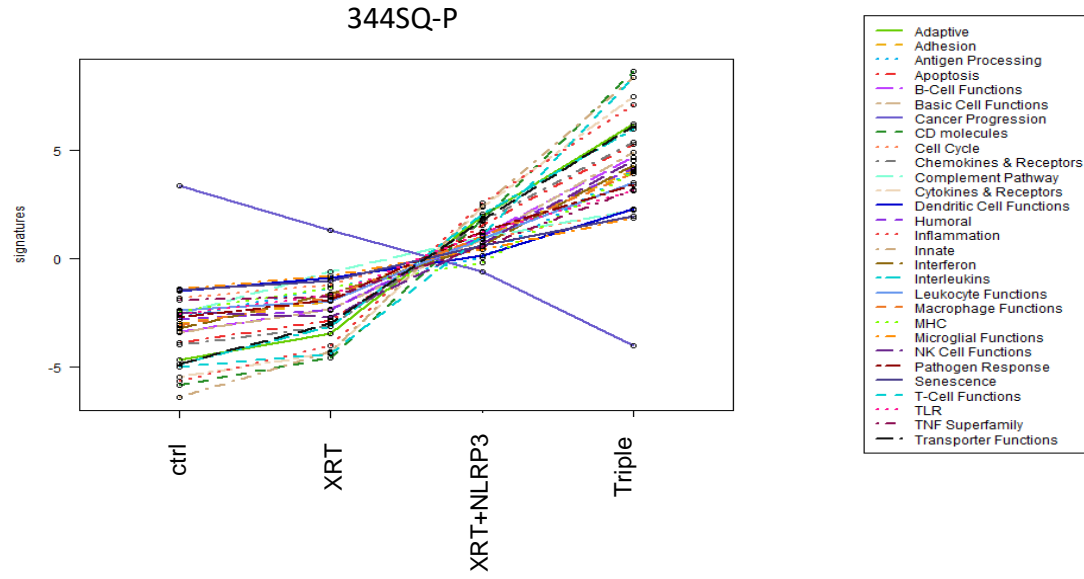
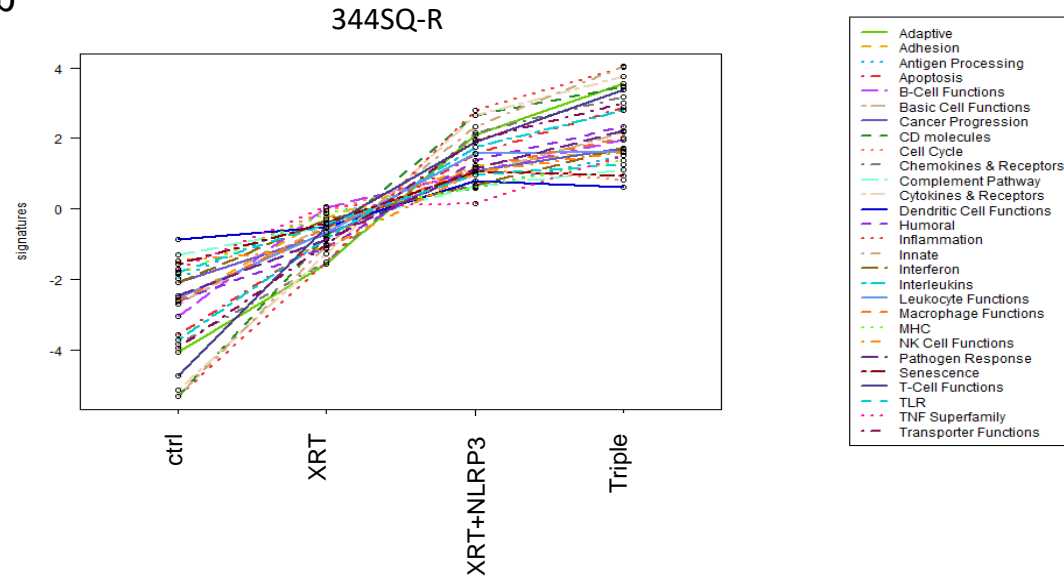
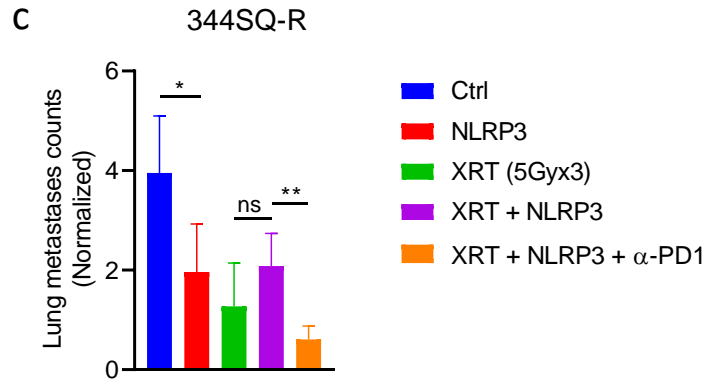
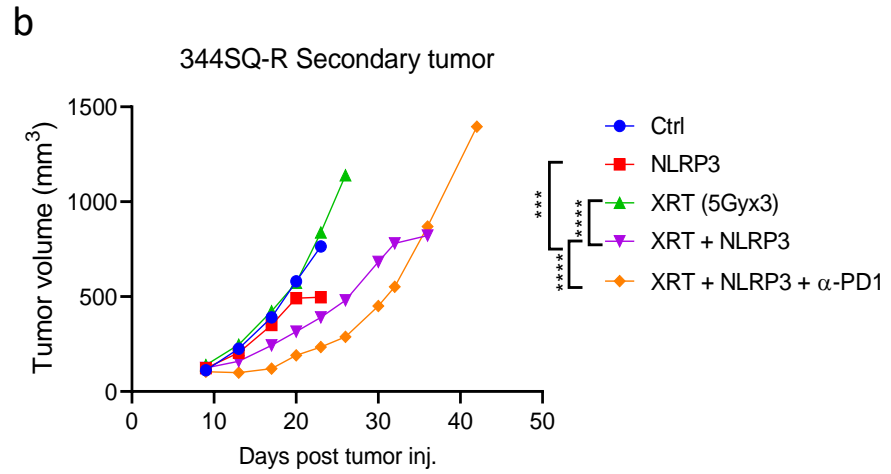
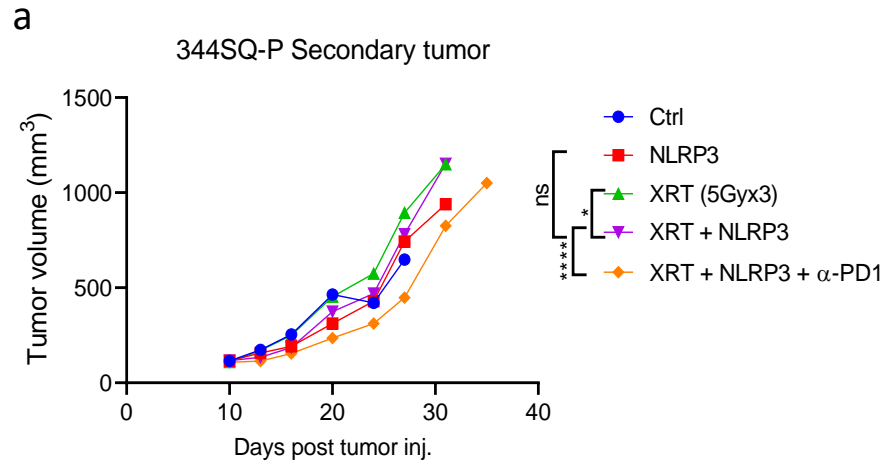


**Supplementary Figure S1.** Survival curves of 344SQ-P 1Gy (A), 344SQ-P 5Gy (B) and 344SQ-R 5Gy (C) models. Tumor growth curves of primary tumors in 344SQ-P 1Gy (D), 344SQ-P 5Gy (E) and 344SQ-R 5Gy (F) models. Survival was plotted by the Kaplan-Meier method. Two-way analysis of variance with multiple comparisons was used to analyze the tumor growth curves. \* $P < 0.05$ ; \*\* $P < 0.01$ ; \*\*\*\* $P < 0.0001$ ; ns, not significant.

**a****b**

**Supplementary Figure S2.** Immune pathways analysis in primary tumors of 344SQ-P and 344SQ-R using NanoString 770 immune-related genes panel. The XRT dose used was 12Gy x 3 fractions.



**Supplementary Figure S3.** Secondary tumor growth curves of different treatment groups in 344SQ-P (**A**) and 344SQ-R (**B**) using 5Gy x 3 XRT dose. Groups were compared by 2-way ANOVA. \* $P < 0.05$ , \*\* $P < 0.01$ ; \*\*\* $P < 0.001$ , \*\*\*\* $P < 0.0001$ ; ns, not significant. (**C**) Lung metastases counts (normalized by the day of sacrifice) of mice that received different treatments in the 344SQ-R model. Groups were compared using unpaired  $t$  tests. \* $P < 0.05$ , \*\* $P < 0.01$ ; ns, not significant.

**Supplementary Table S1.** Fold change of NLRP3, IL-1b and IL-18 expression (344SQ-R over 344SQ-P).

	Ctrl (Log2 fold)	<i>P</i> value	XRT (Log2 fold)	<i>P</i> value
NLRP3	3.94	0.0191	5.32	0.00512
IL1b	1.64	0.123	4.74	0.0156
IL18	2.78	0.0283	3.46	0.0319