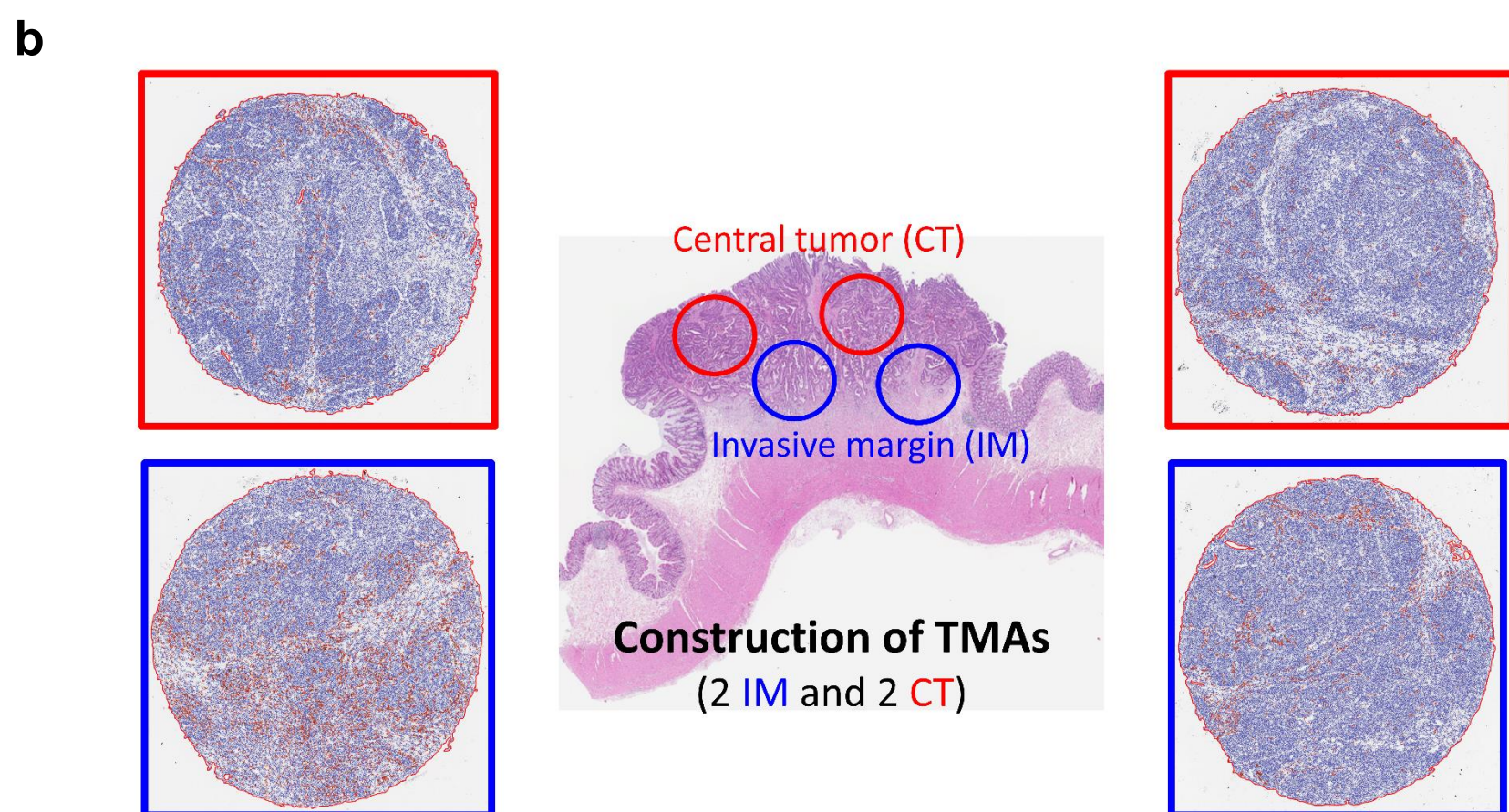
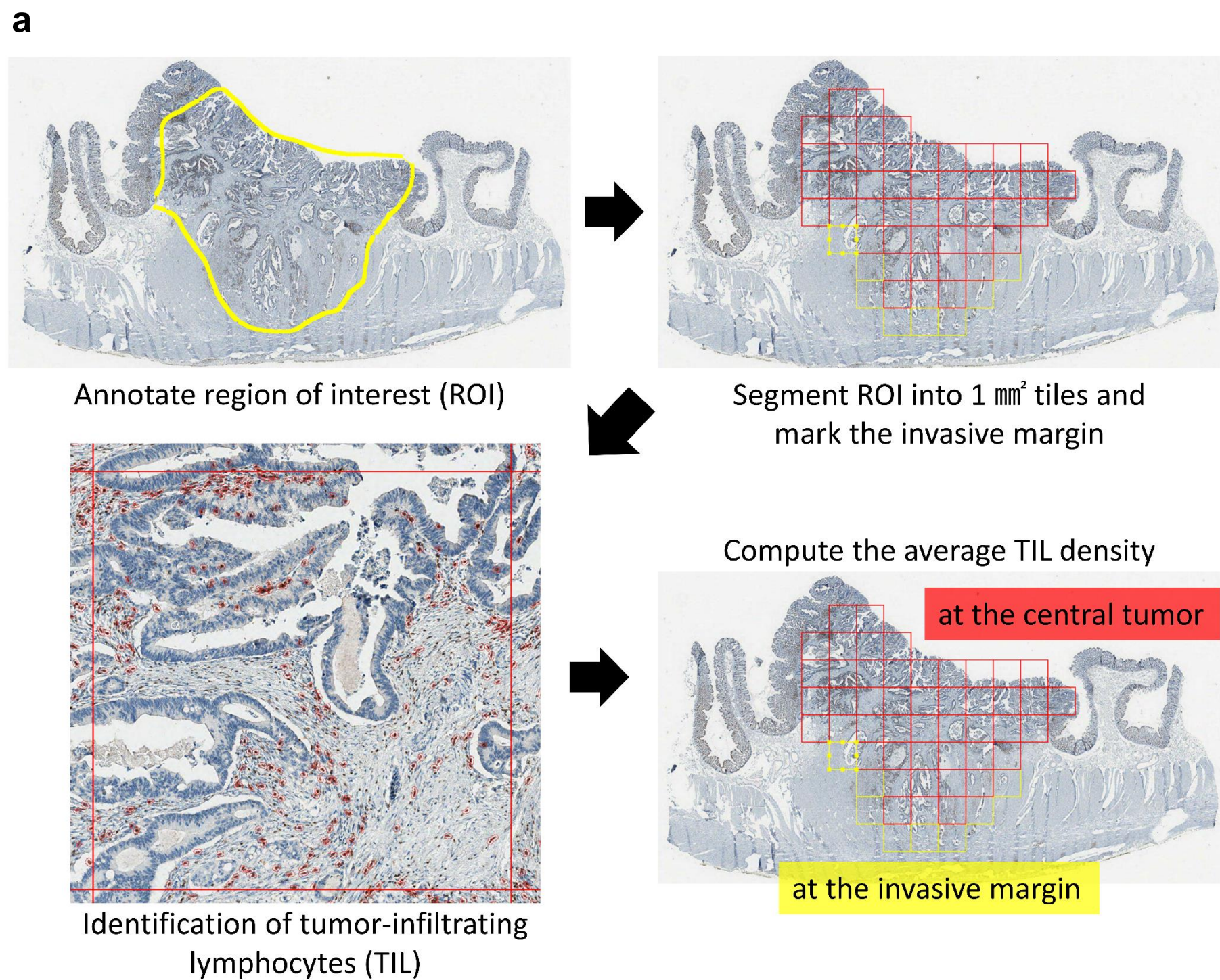


**Supplementary Figure S1. Schematic summary of methods for tumor-infiltrating immune cells quantification**  
 (a) Whole-slide-based computational analysis of CD3<sup>+</sup> and CD8<sup>+</sup> tumor-infiltrating lymphocytes (TILs) densities in invasive margin (IM) and center of tumor (CT) areas. (b) Tissue microarray (TMA)-based computational analysis of densities of FoxP3<sup>+</sup> TILs, CD68<sup>+</sup> and CD163<sup>+</sup> tumor-infiltrating macrophages, and CD177<sup>+</sup> tumor-infiltrating neutrophils in IM and CT areas. In total, four cores (two IM and two CT cores) per case were evaluated.



	IM1	IM2	CT1	CT2
<b>Density</b> (# positive cells/ area of TMA core)	A	B	X	Y
	<b>IM</b>		<b>CT</b>	
<b>Average</b>	(A+B)/2		(X+Y)/2	