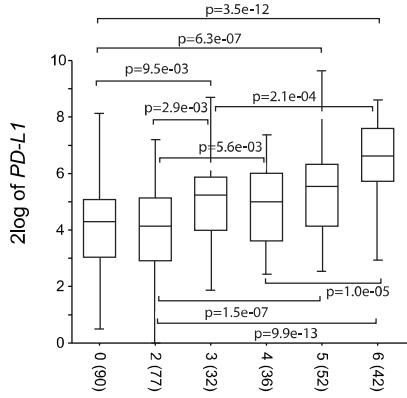
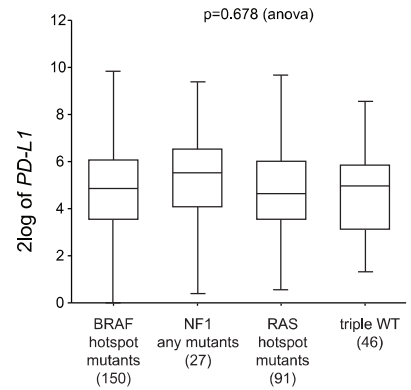
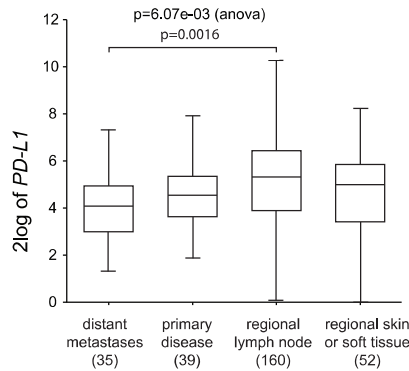
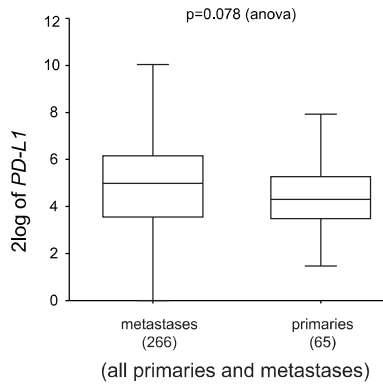


S1A

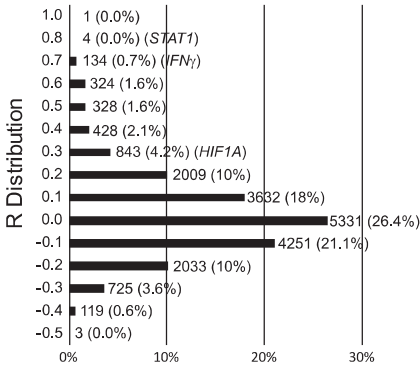
**Lymphocyte score vs PD-L1**  
( $R=0.423$ ;  $p=1.02e-15$ )



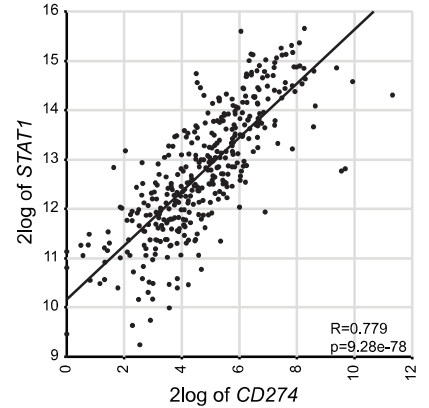
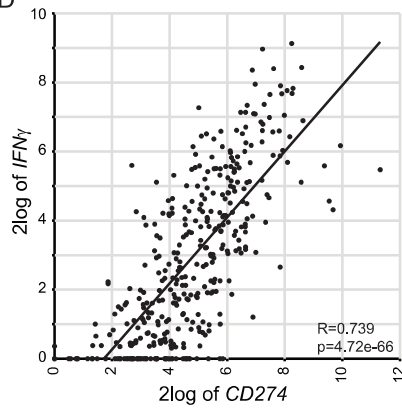
S1B



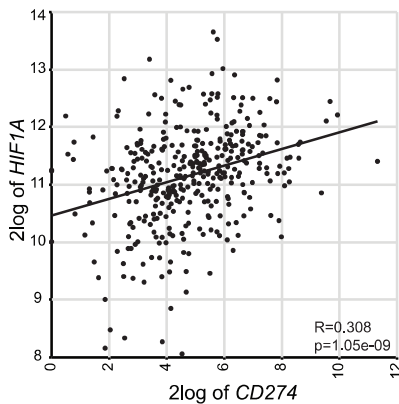
S1C



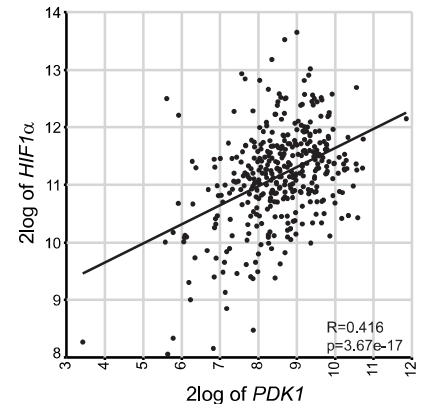
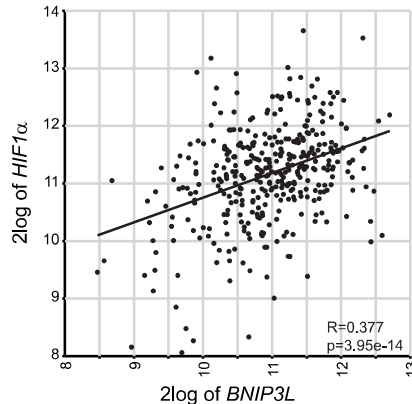
S1D



S1E

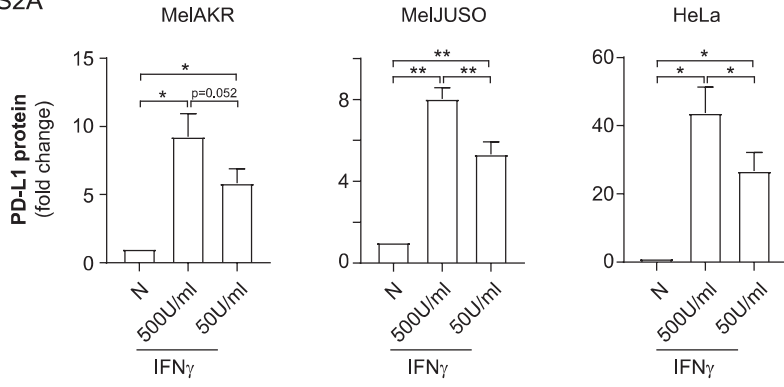


S1F

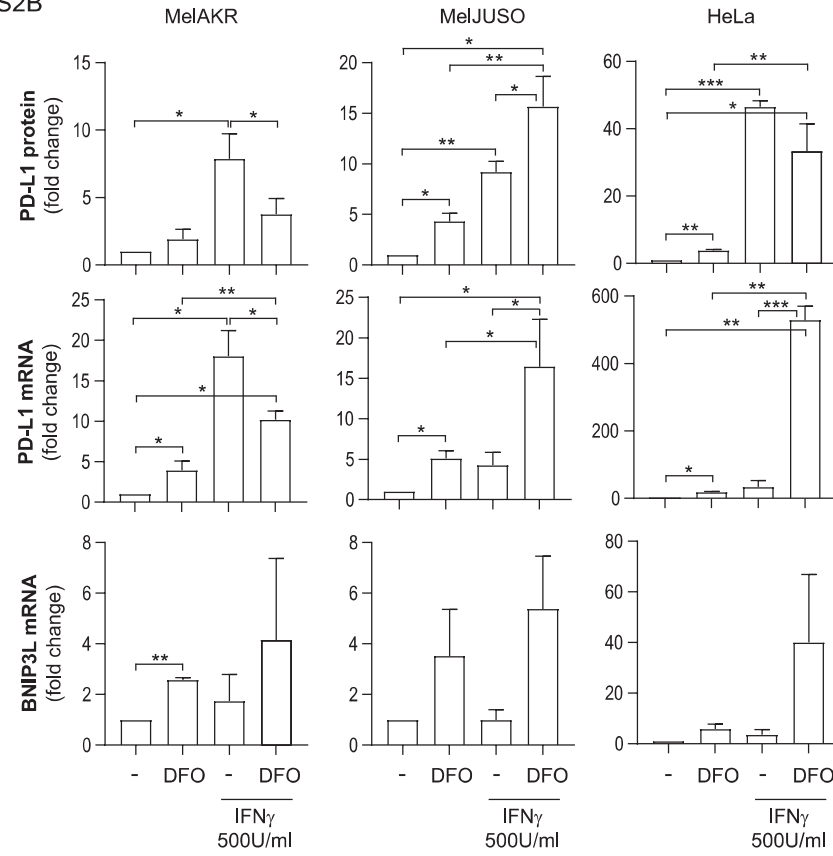


# Supplemental Figure S2

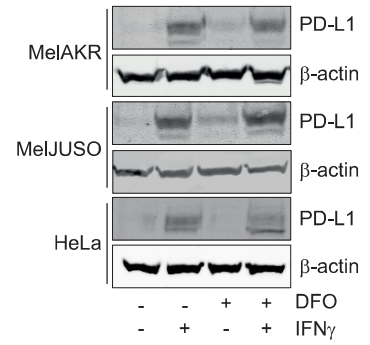
S2A



S2B



S2C



Supplemental Figure S3

S3A

Correlation <i>CD274</i> mRNA with Geneset Signature Expression	R	p-value
<b>Melanoma cells (2018 cells)</b>		
JAK_STAT_Signaling_Pathway (KEGG)	0.169	2.47e-14
HIF_1_signaling_pathway (KEGG)	0.119	7.79e-08
<b>Tumor 110 (258 cells)</b>		
JAK_STAT_Signaling_Pathway (KEGG)	0.537	1.03e-20
HIF_1_signaling_pathway (KEGG)	0.271	9.85e-06
<b>Macrophage (420 cells)</b>		
JAK_STAT_Signaling_Pathway (KEGG)	0.122	0.012
HIF_1_signaling_pathway (KEGG)	0.031	0.521

S3B

