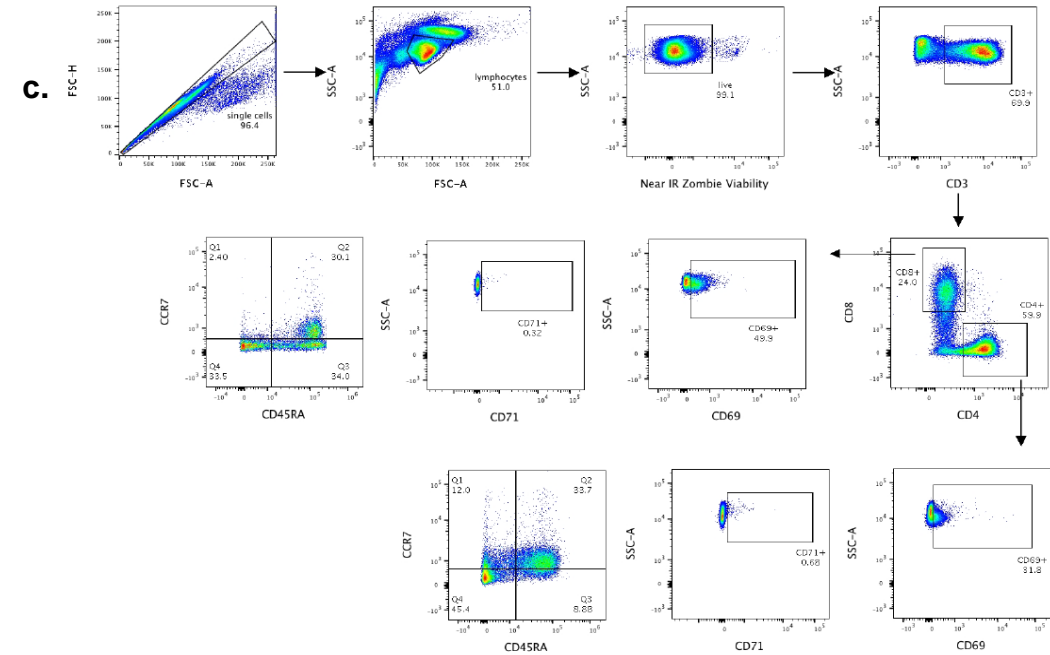


Supplemental Figure 1: Flow cytometry panels and gating strategies

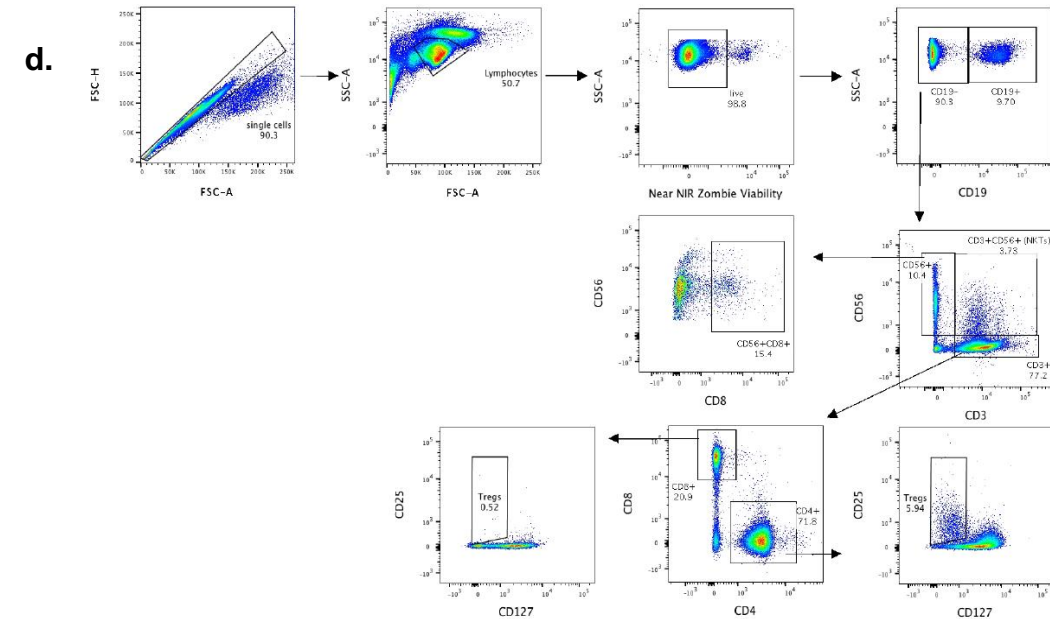
a.

Panel 1					
Marker	Fluorophore	Antibody Clone	Catalogue #	Vendor	DF
CD3	PerCP 5.5	OKT3	45-0037-42	eBio	120
CD4	FITC	OKT4	11-0048-42	eBio	500
CD8	APC	BW135/80	130-091-076	Miltenyi	120
CD69	PE	FN50	12-0699-42	eBio	30
CD71	BV421	M-A712	562995	BD	50
CD45RA	PE Cy7	HI100	25-0458-42	eBio	60
CCR7	BV510	GO43H7	353232	Biolegend	30
Live/Dead	Zombie NIR	n/a	423105	Biolegend	2500



b.

Panel 2					
Marker	Fluorophore	Antibody Clone	Catalogue #	Vendor	DF
CD3	BV650	UCHT1	563852	BD	30
CD4	FITC	OKT4	11-0048-42	eBio	500
CD8	BV786	RPA-T8	563823	BD	60
CD25	PE	BC96	12-0259-42	eBio	60
CD56	BV421	HCD56	318328	Biolegend	30
CD127	APC	eBioRDR5	17-1278-42	eBio	30
CD19	Pe Cy7	SJ25c1	25-0198-42	eBio	150
Live/Dead	Zombie NIR	n/a	423105	Biolegend	2500



Supplemental Figure 2: Plasma Levels of Prexasertib and LY3300054

