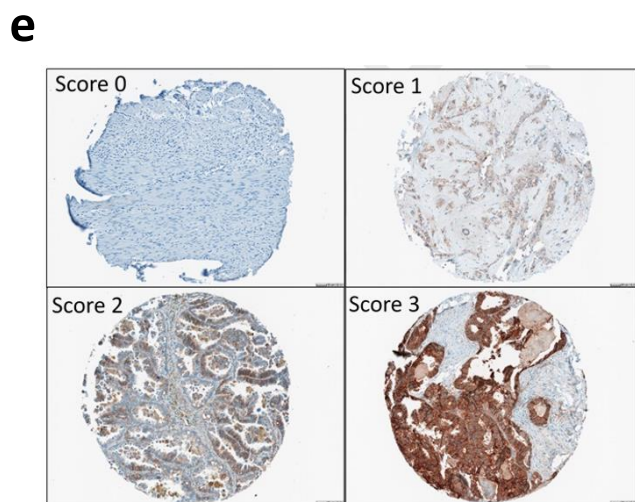
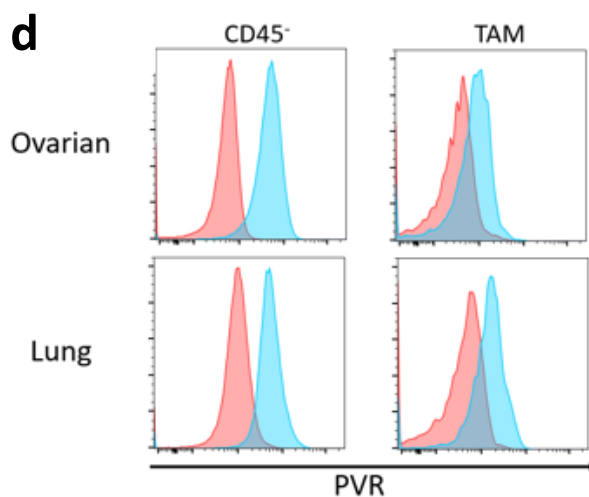
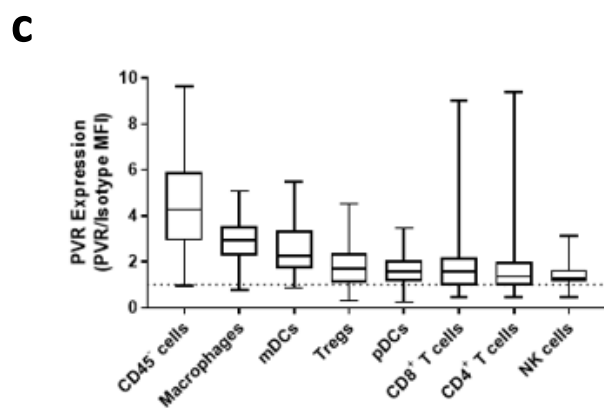
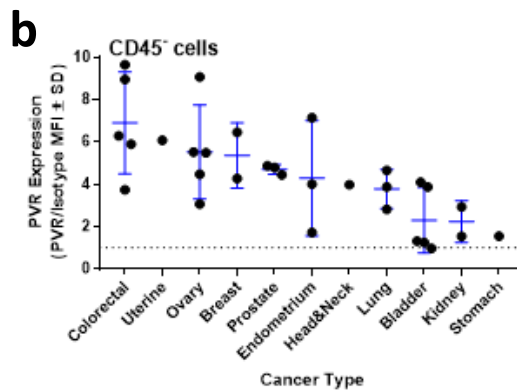
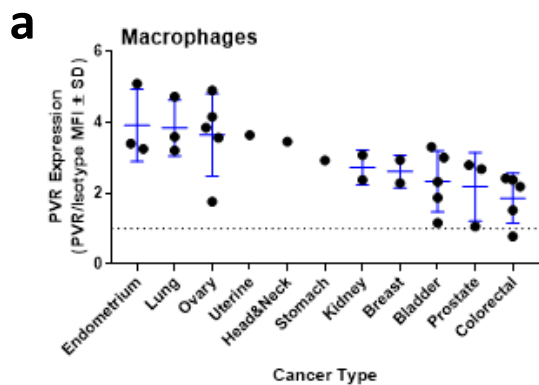


Supplemental Figure 1



f

Score 3	Complete, intense, membranous staining in >50% of cells
Score 2	Complete, intense, membranous staining in <50% of cells OR Complete, weak, membranous staining in >50% of cells
Score 1	Complete, weak, membranous staining in <50% of cells OR Incomplete membranous staining in any cells
Score 0	No membranous staining

Supplemental Figure 1g: PVR expression in healthy and tumor tissues

PVR- tumor

Tissue Type	Total Samples	% Low (Score 1)	% Moderate (Score 2)	% High (Score 3)
Colon	20	0	5	95
Prostate	21	0	14	86
Liver	10	0	10	90
Skin	8	13	25	63
Stomach	9	33	11	56
Brain	10	30	10	60
Head and Neck	24	33	21	46
Bladder	11	18	27	55
Endometrial	14	0	50	50
Lung	19	37	26	37
Pancreatic	11	27	36	36
Thyroid	10	60	20	20
Ovarian	10	20	50	30
Kidney	25	32	40	28
Breast	19	84	11	5

PVR- healthy

Tissue Type	Total Samples	% Low (Score 1)	% Moderate (Score 2)	% High (Score 3)
Colon	1	0	0	100
Prostate	3	0	0	100
Liver	2	0	0	100
Skin	1	100	0	0
Stomach	3	0	0	100
Brain	4	0	0	0
Head and Neck	2	0	0	100
Bladder	3	0	0	100
Endometrium	1	0	100	0
Lung	2	0	100	0
Pancreatic	3	0	0	100
Thyroid	3	0	100	0
Ovarian	3	33	67	0
Kidney	4	0	0	100
Breast	1	100	0	0