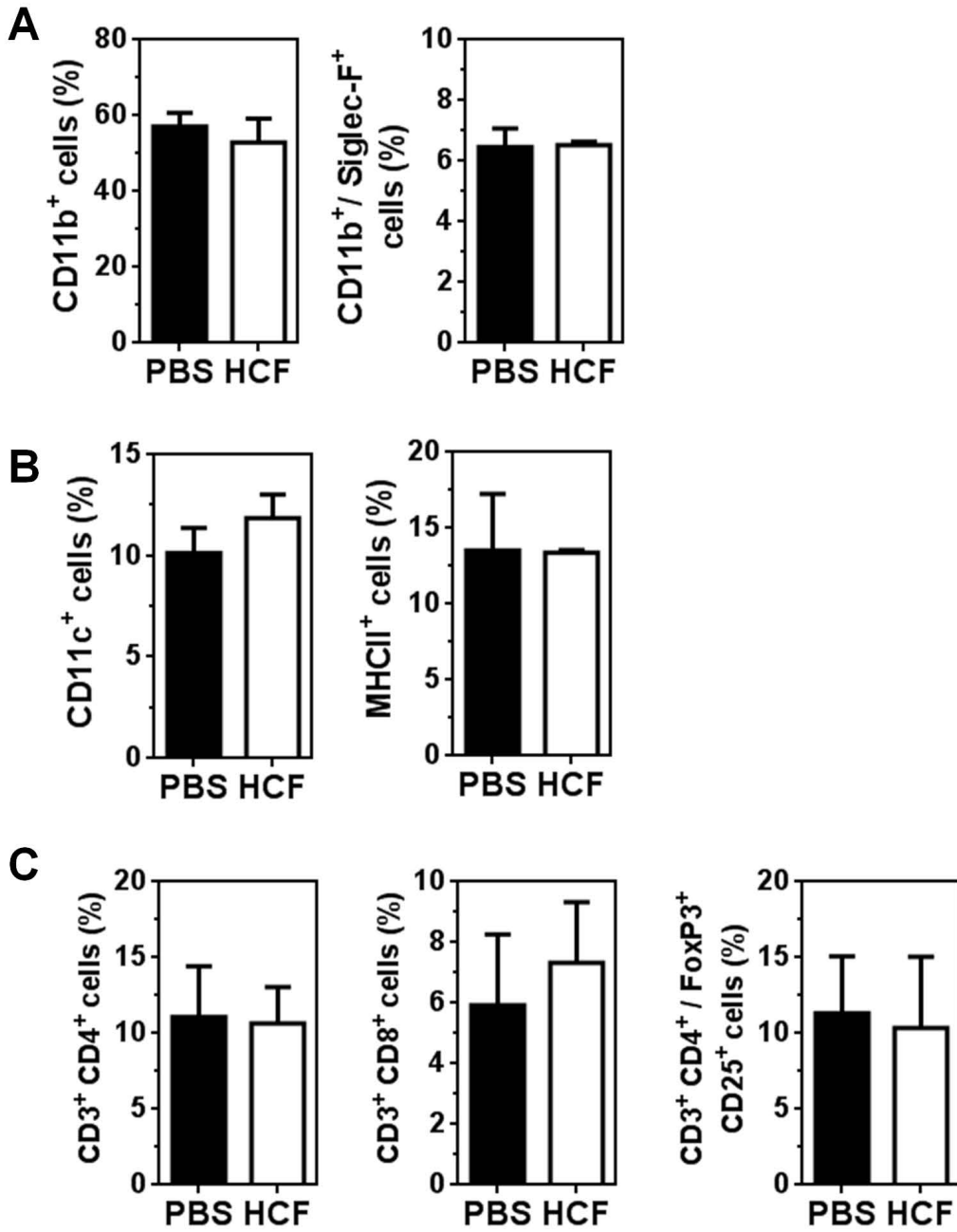


Supplementary Figure 1



Supplementary Figure 1. Analyses of the tumor microenvironment in HCF-vaccinated animals

C57BL/6 mice were vaccinated three times at two week-intervals with human HCF or PBS in alum before LL/2 cells challenge (100,000 cells/mouse). Tumor growth was measured regularly using a caliper. Tumor volume (mm^3) was calculated according to the following formula: $\frac{4}{3} \times \pi \times r1 \times r2 \times r3$. At day 17 animals were sacrificed and tumors were removed. Then, tumor cells were stained with anti-CD11b, -Siglec-F, -CD11c, -MHCII, -CD3, -CD4, -CD8, -CD25 and -FoxP3 antibodies and analyzed by flow cytometry. (A) Frequency of CD11b⁺ and CD11b⁺/Siglec-F⁺ cells. (B) Frequency of CD11c⁺ and MHCII⁺ cells. (I) Frequency of CD3⁺ CD4⁺, CD3⁺ CD8⁺ and CD3⁺ CD4⁺/CD25⁺ Foxp3⁺ cells.