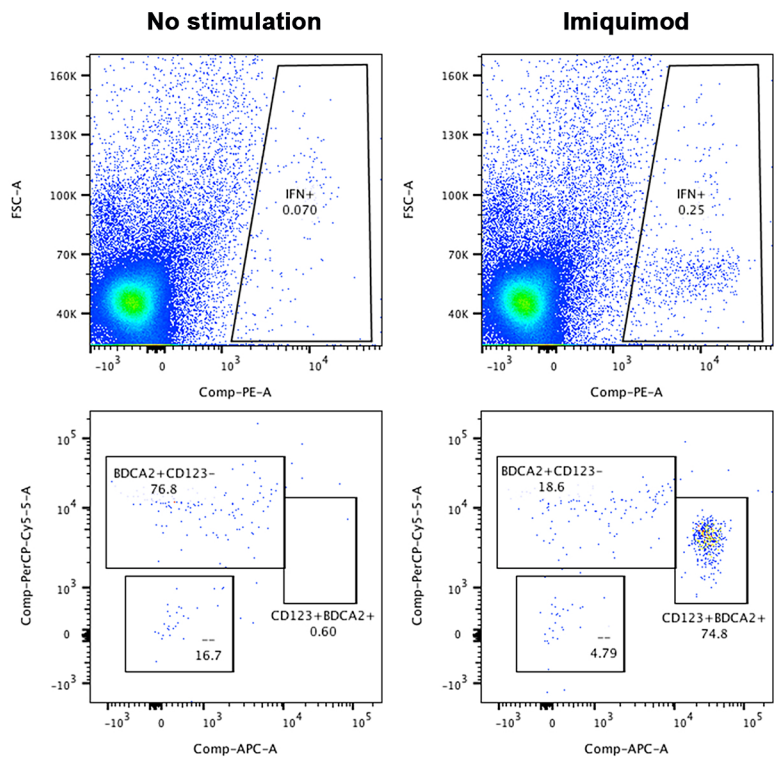


List of the fluorochrome-labeled monoclonal antibodies used for flow cytometry

Antigen	Fluorochrome	Clone	Producer
CD3	FITC	OKT3	eBioscience
CD3	AmCyan	SK7	BD Biosciences
CD4	PE/Dazzle 594	OKT4	Biolegend
CD4	PeCy 7	RPA-T4	eBioscience
CD8	PeDylight 594	MEM-31	Exbio
CD14	FITC	MEM-15	Exbio
CD16	FITC	LNK16	Exbio
CD19	FITC	LT19	Exbio
CD20	FITC	LT20	Exbio
CD20	Alefa Fluor 700	2H7	Exbio
CD25	Alexa Fluor 700	M-A251	Biolegend
CD28	PeCy 7	CD28.2	Biolegend
CD45	Alexa Fluor 700	HI30	Biolegend
CD45	PeCy 7	HI30	Biolegend
CD56	FITC	MEM-188	Exbio
CD123	APC	6H6	Biolegend
CD127	Alexa Fluor 647	A019D5	Biolegend
BDCA-2	PerCP-Cy 5.5	201A	Biolegend
Granzyme B	Alexa Fluor 700	GB11	BD Biosciences
FoxP3	Alexa Fluor 488	259D/C7	BD Biosciences
IDO	PeCy7	eyedio	eBioscience
IFN α	PE	7N4-1	BD Biosciences
NKp44	Pacific Blue	44.189	eBiosciences
TIM-3	PeCy 7	F38-2E2	Biolegend
TLR 7	PE	533707	R&D systems
TLR 9	PE	eB72-1665	BD Biosciences
TRAIL	PE	RIK-2	Biolegend

Figure S1

A



B

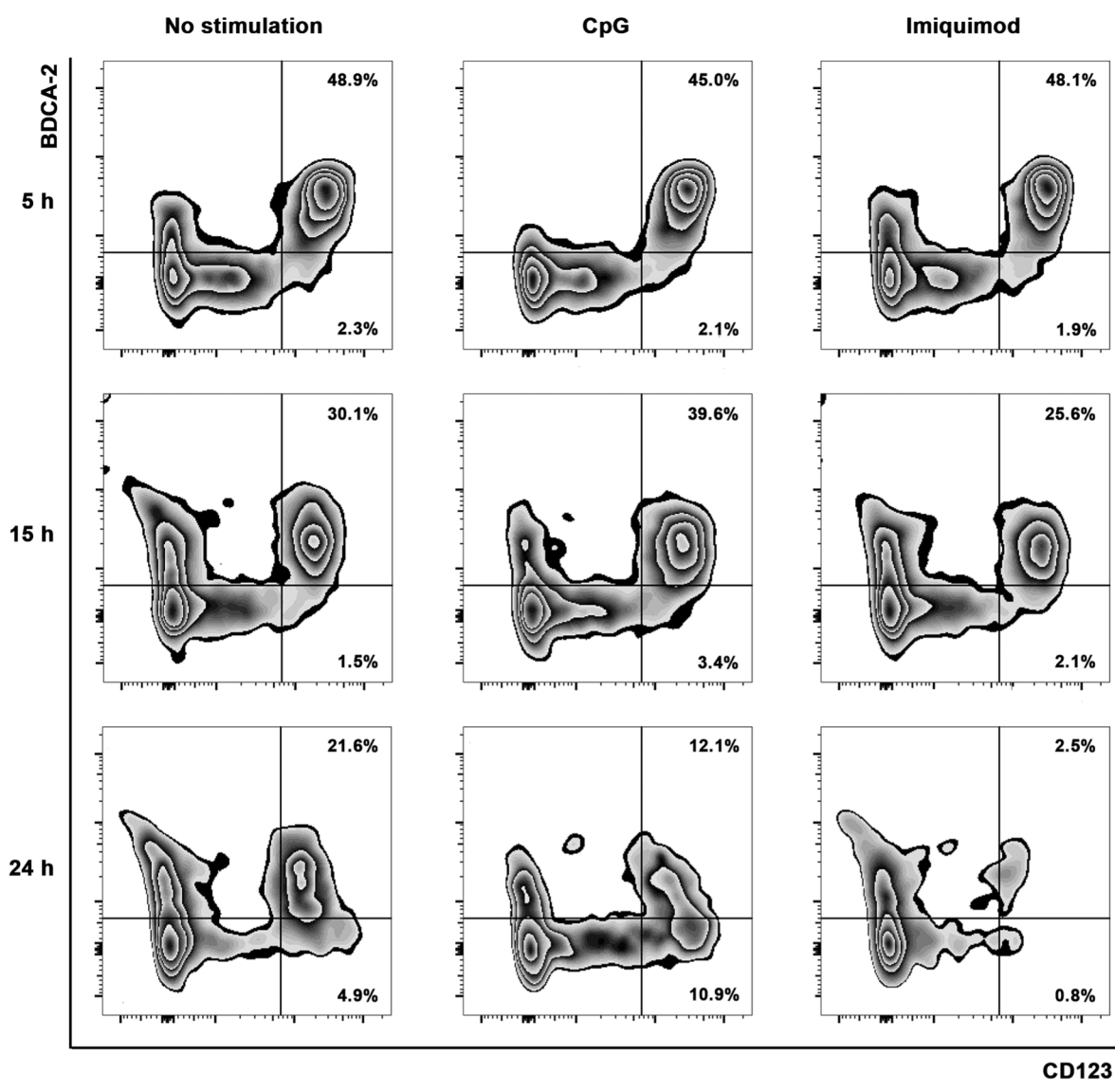


Figure S1: (A) Detection of IFN α ⁺ cells in tumor-derived single cell suspension upon imiquimod stimulation in a representative patient. (B) Flow cytometric analysis of pDC proportions in freshly resected tissue of HNSCC depending on the chosen TLR agonist (CpG, IMQ) and length of the stimulation. Zebra plots of a representative sample show changes in pDC frequency with respect to time and treatment. Cells were gated on CD45⁺Lin⁻CD4⁺ cells.