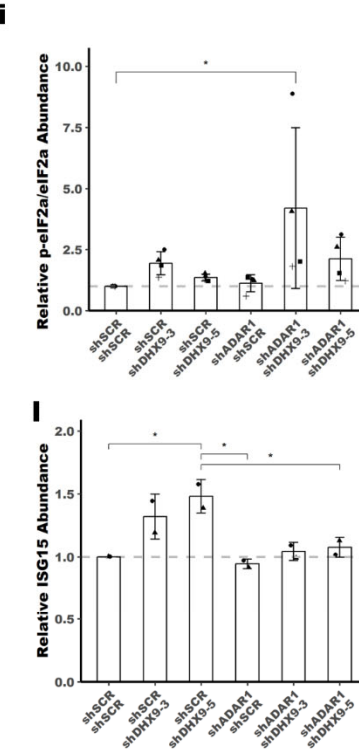
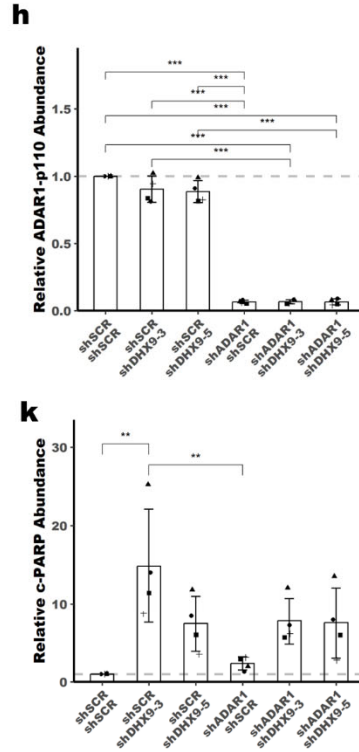
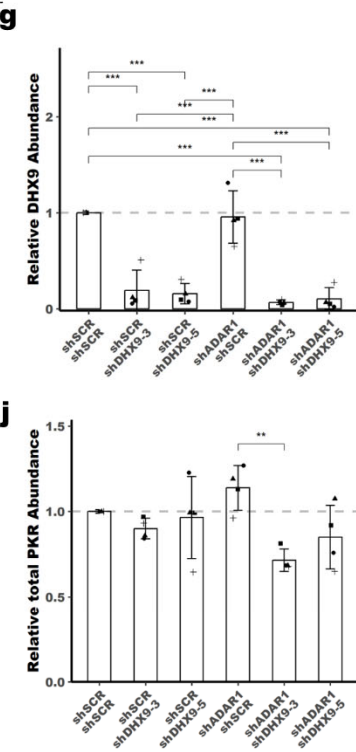
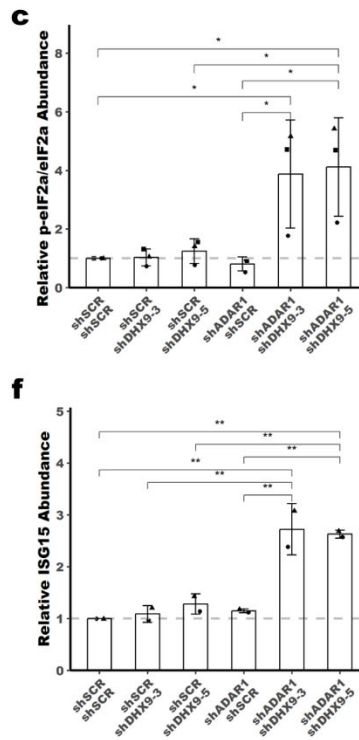
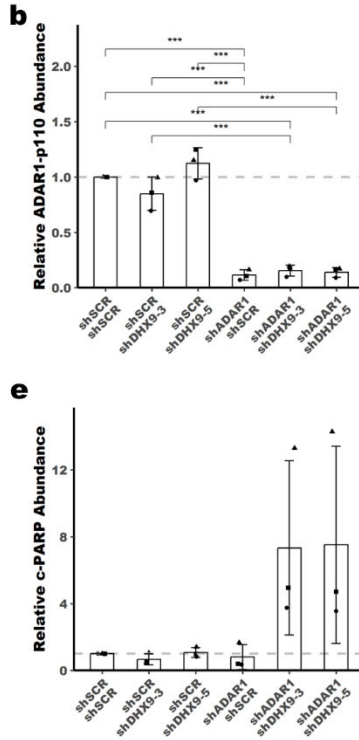
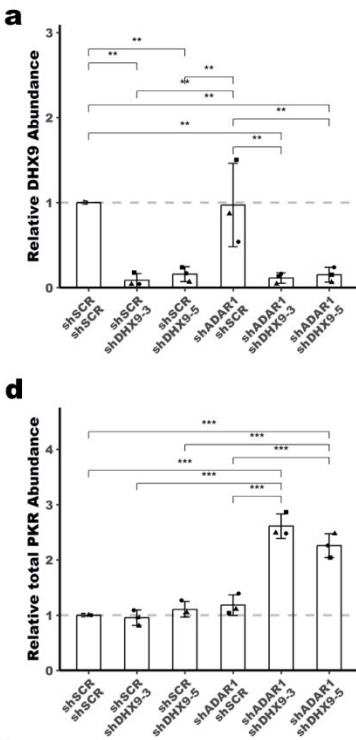
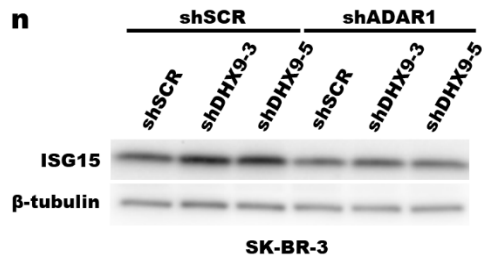
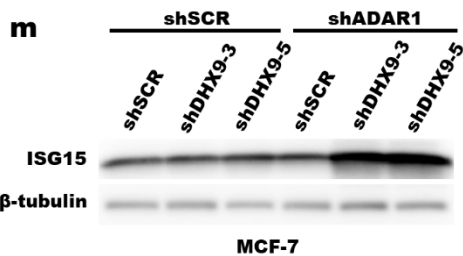
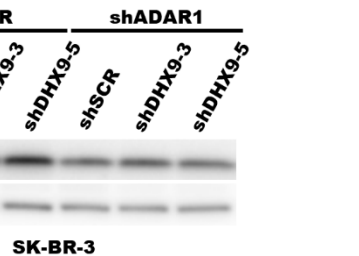
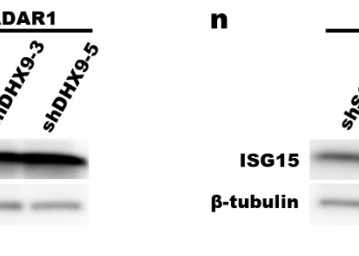
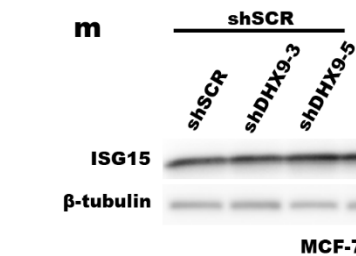
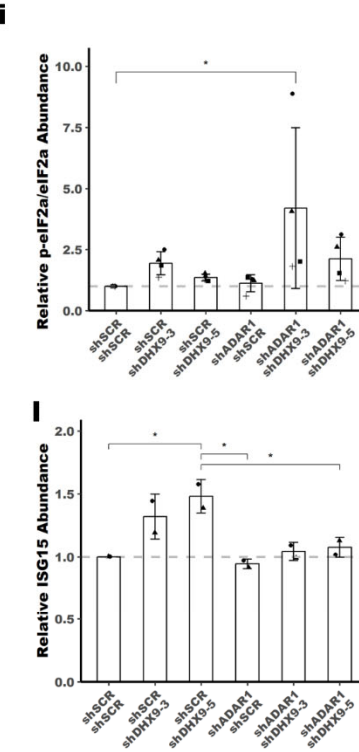
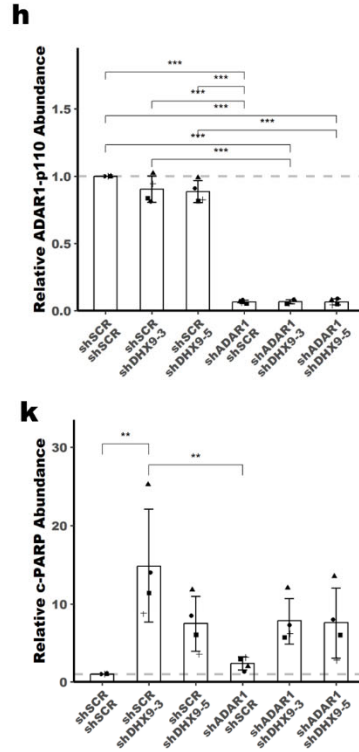
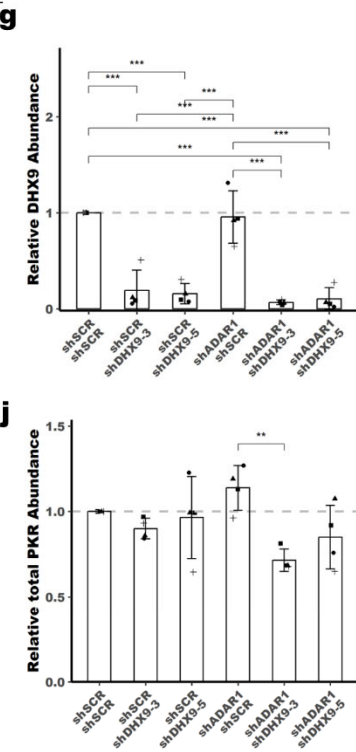


**MCF-7**



**SKBR3**



## Figure S5:

**a-l** Quantification of the immunoblots shown in Figure 4a, 4f and panels **m** and **n** in this figure. **m-n** Representative immunoblot for ISG15 and  $\beta$ -tubulin in MCF-7 and SK-BR-3 following knockdown of DHX9 and/or ADAR1. Immunoblots from additional experiments can be found in the Source Data Figures. Bars represent the average of at least three replicates **a-e** and **g-k** or two replicates **f** and **l**, error bars are +/- SD. \*  $p < 0.05$ , \*\*  $p < 0.01$ , \*\*\*  $p < 0.001$ . P-values determined by one-way ANOVA with post-hoc Tukey. Comparisons between the two different shRNAs targeting DHX9 (shDHX9-3 and shDHX9-5) were not included for clarity.