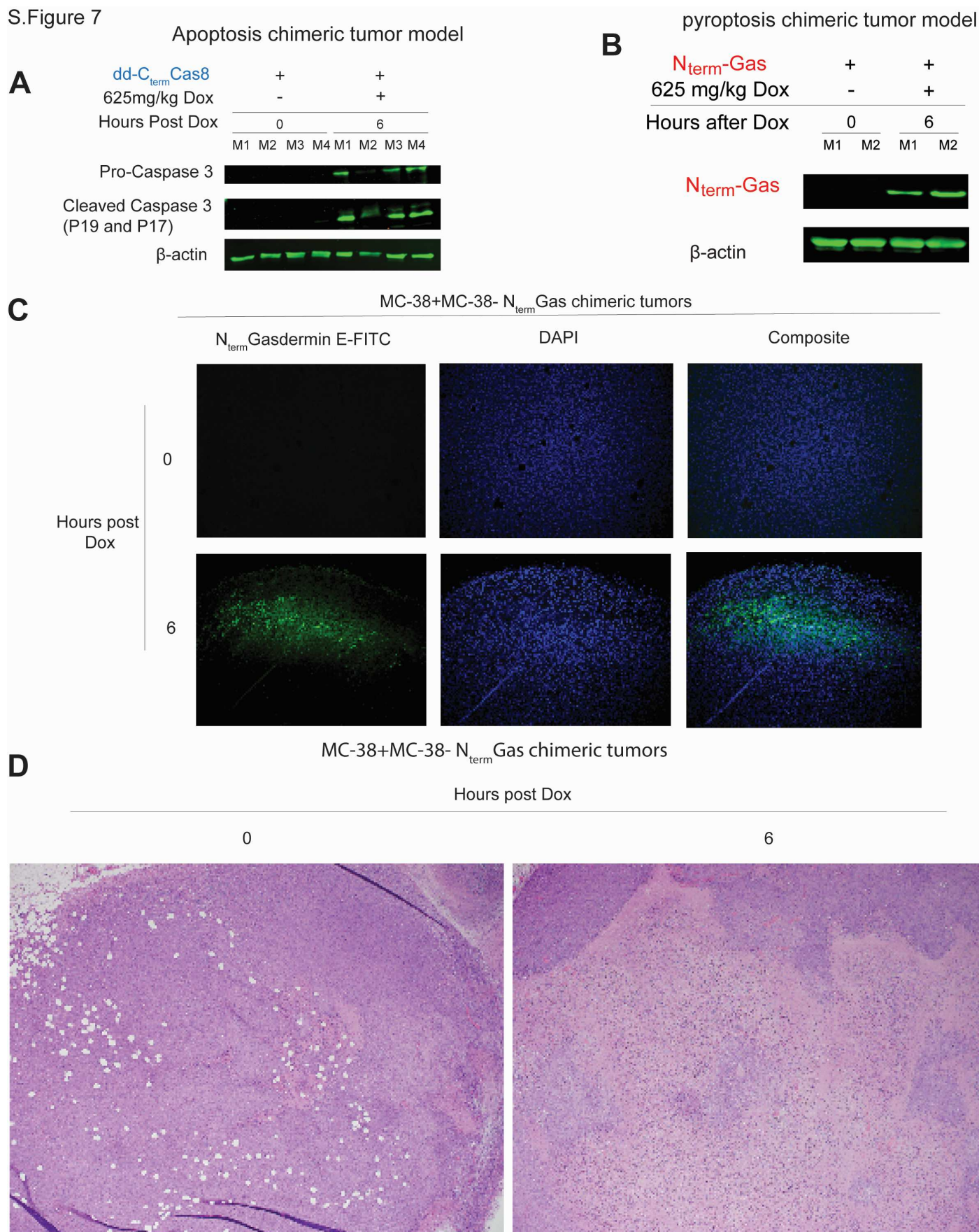


S.Figure 7



Supplementary figure 7. Chimeric tumors formed by transplanting wildtype and dd-C_{term}Cas8 (A) or N_{term}Gas (B) show inducible expression of the respective proteins after doxycycline mediated diet feeding. Immunohistochemical analysis of tumour slices shows localized pockets of N_{term}Gas expression (C). Hematoxylin and eosin staining of chimeric tumours shows distinct large necrotic regions after induction of pyroptosis by N_{term}Gas (D).