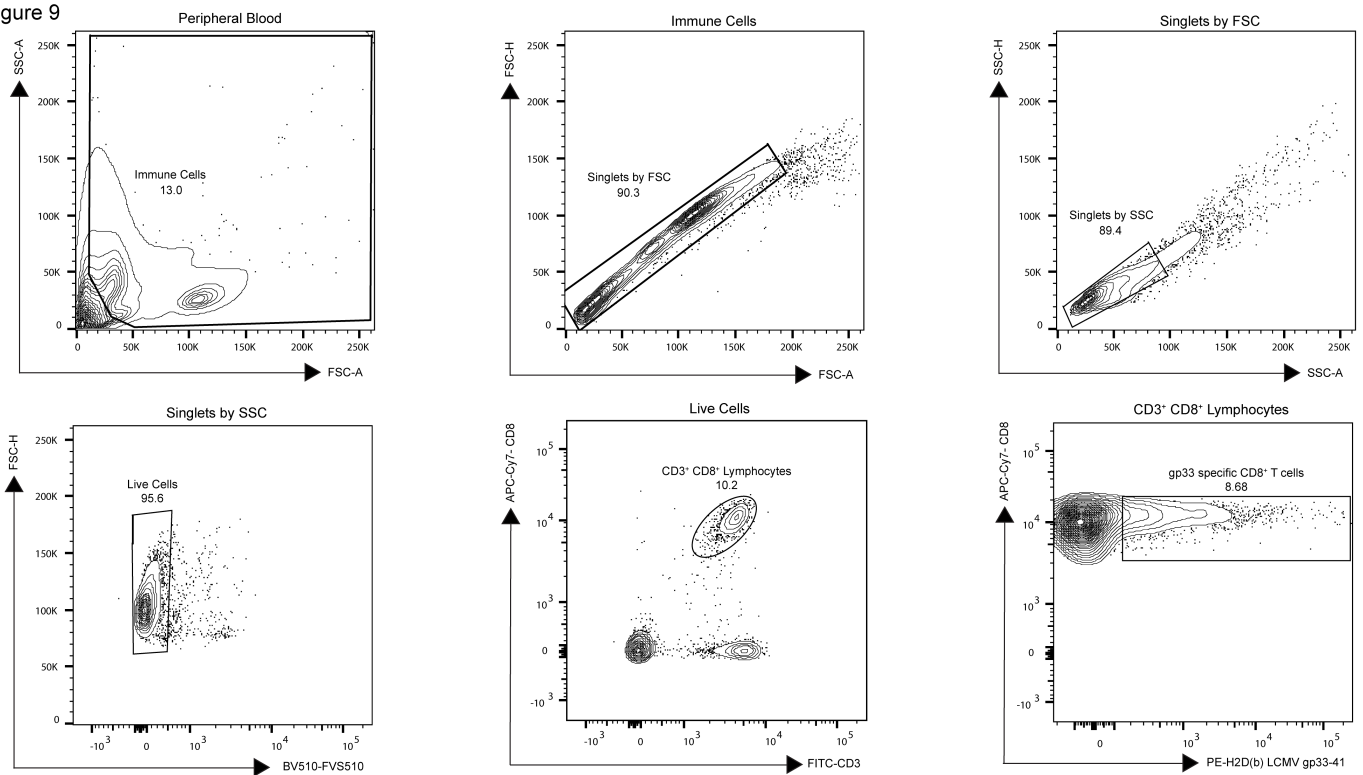


S.Figure 9



**Supplementary figure 9.** Gating strategy for CD8<sup>+</sup> T cells isolated from blood or tumors. CD8<sup>+</sup> T cells were defined as CD3<sup>+</sup> CD8<sup>+</sup>. Tumour/antigen specific T cells were defined by recognition of H2D(b) LCMV gp33-41 tetramer.