

Association of dietary intake of B vitamins with glaucoma

Author names

Jingjing Hou^{1,2}, Yu Wen^{1,2}, Sijia Gao^{1,2}, Zhengxuan Jiang¹, Liming Tao^{1*}

Affiliations

¹Department of Ophthalmology, The Second Affiliated Hospital of Anhui Medical University, 678 Furong Road, Hefei, Anhui, China

²Department of clinical medicine, The Second School of Clinical Medicine, Anhui Medical University, 81 Meishan Road, Hefei, Anhui, China

Corresponding author

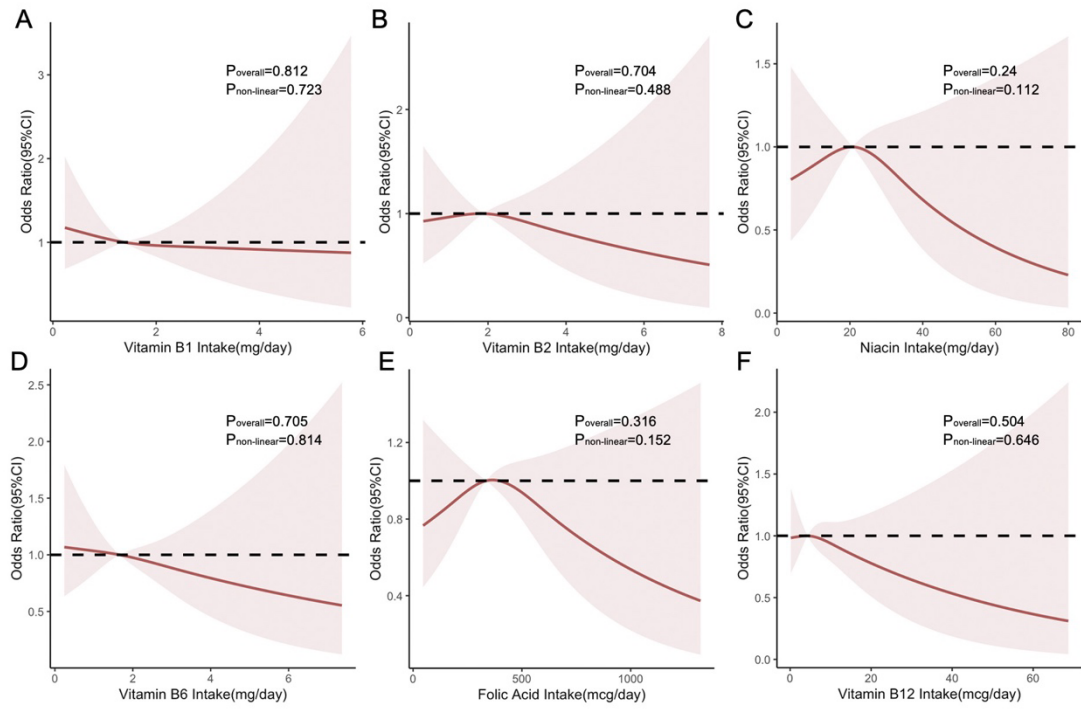
Liming Tao, MD

Department of Ophthalmology, The Second Affiliated Hospital of Anhui Medical University, 678 Furong Road, Hefei, Anhui, China

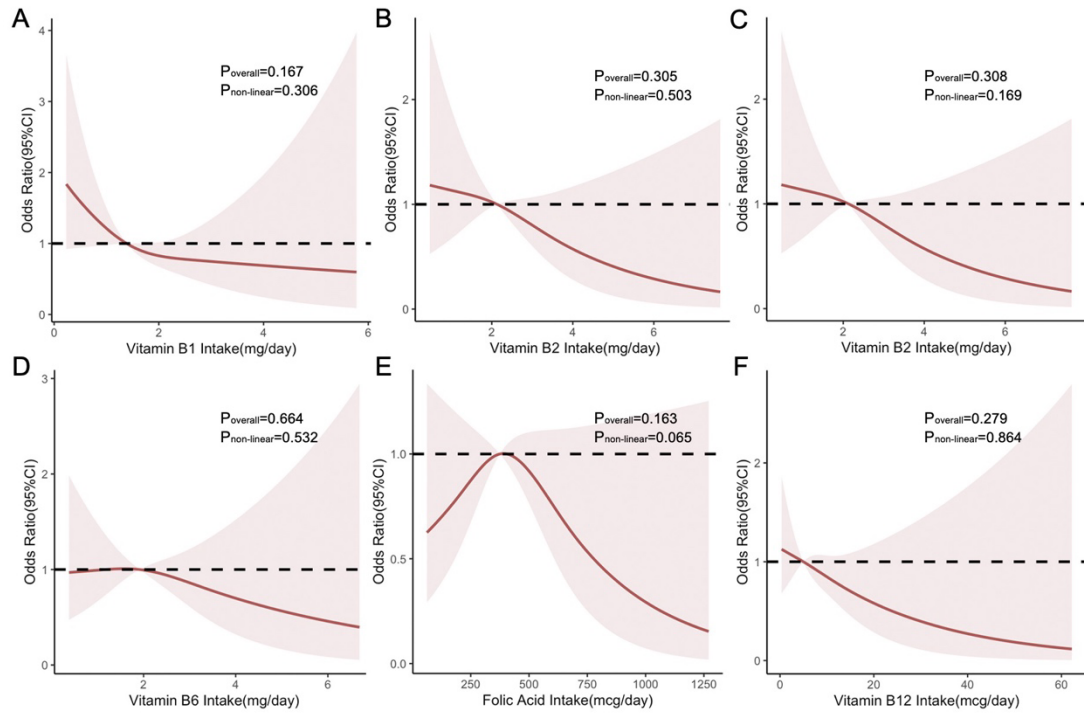
taoliming@ahmu.edu.cn

ORCID

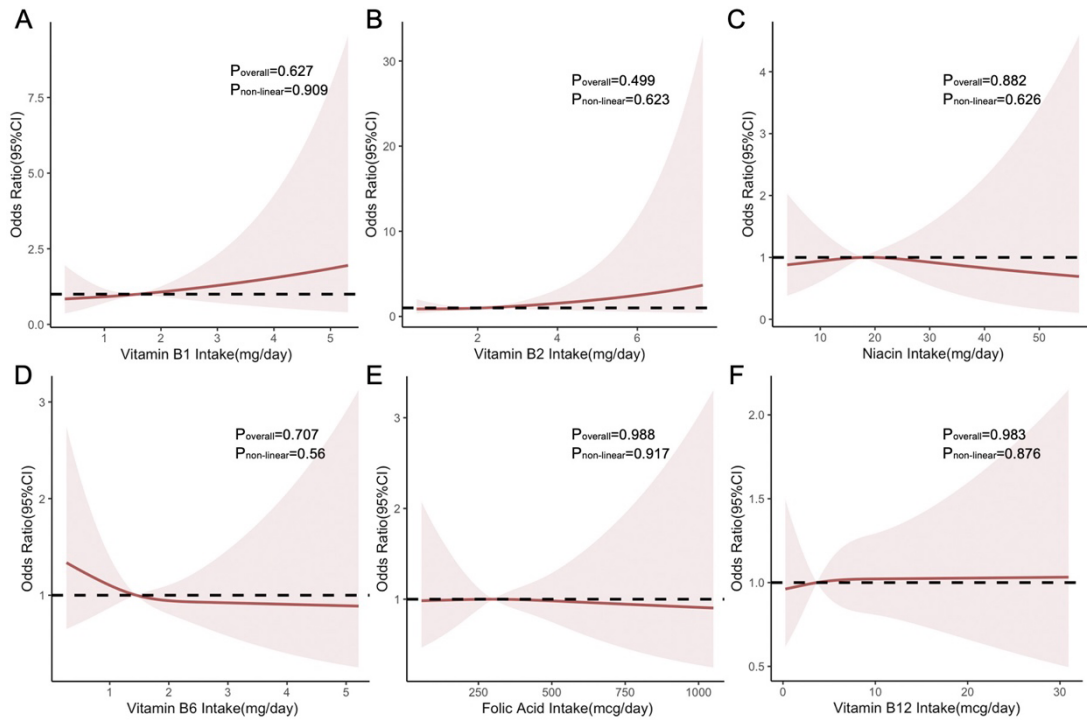
0000-0002-0942-5246



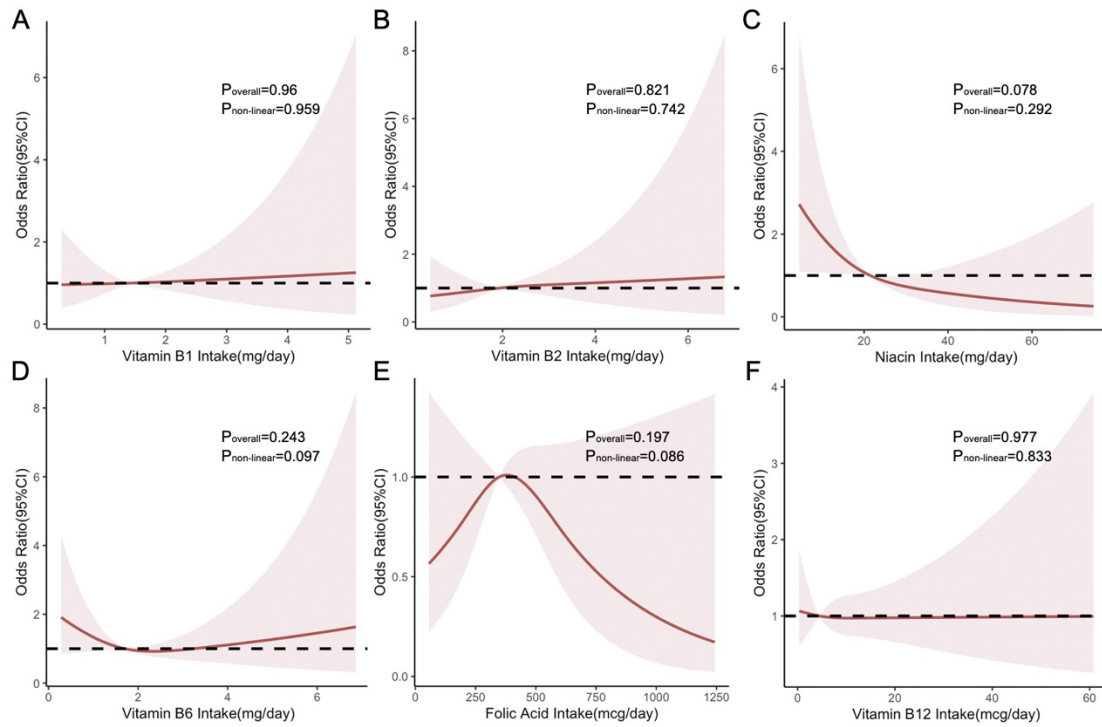
Supplement Fig S1 Restricted cubic spline regression of the association between B vitamin intake and the odds ratio of self-glaucoma after controlling for age, sex, race, educational level, smoking, diabetes, cataract surgery, daily total energy, caffeine intake and interacted vitamin b. (A) Vitamin B1; (B) Vitamin B2; (C) Niacin; (D) Vitamin B6; (E) Folic acid; (F) Vitamin B12



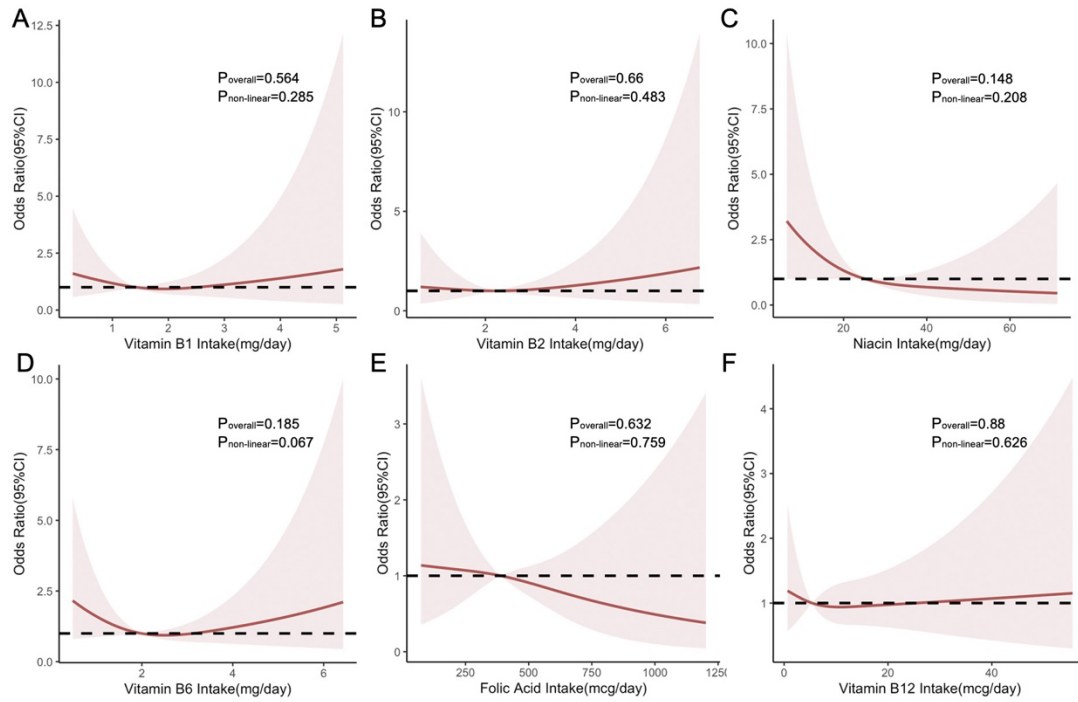
Supplement Fig S2 Restricted cubic spline regression of the association between B vitamin intake and the odds ratio of self-glaucoma in males after controlling for age, race, educational level, smoking, diabetes, cataract surgery, daily total energy, caffeine intake and interacted vitamin b. (A) Vitamin B1; (B) Vitamin B2; (C) Niacin; (D) Vitamin B6; (E) Folic acid; (F) Vitamin B12



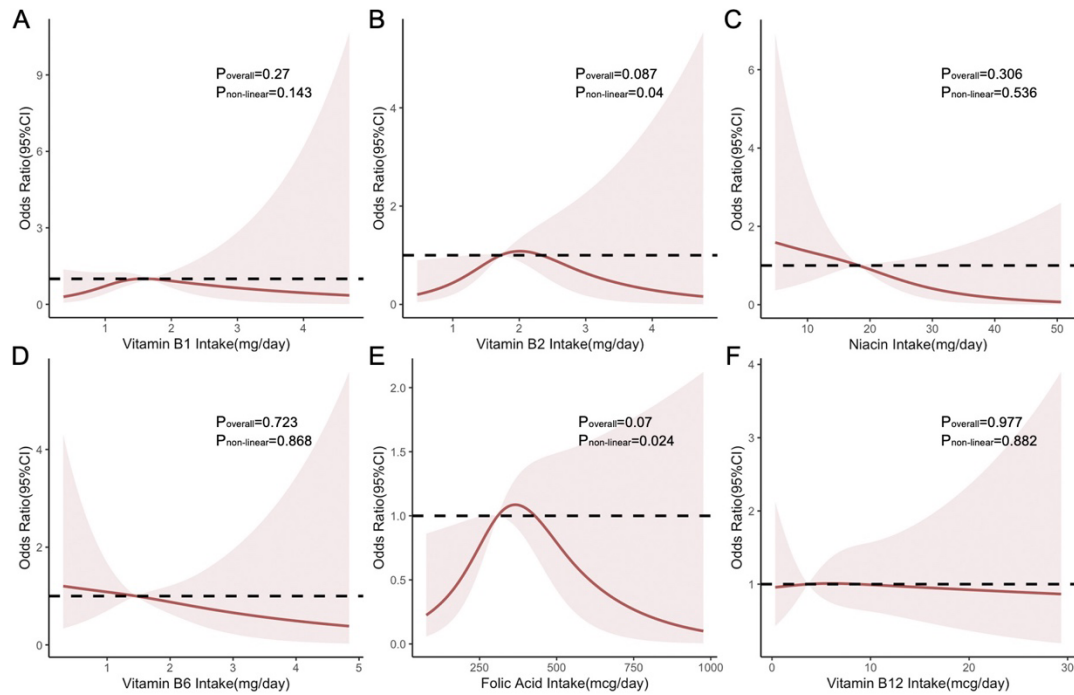
Supplement Fig S3 Restricted cubic spline regression of the association between B vitamin intake and the odds ratio of self-glaucoma in females after controlling for age, race, educational level, smoking, diabetes, cataract surgery, daily total energy, caffeine intake and interacted vitamin b. (A) Vitamin B1; (B) Vitamin B2; (C) Niacin; (D) Vitamin B6; (E) Folic acid; (F) Vitamin B12



Supplement Fig S4 Restricted cubic spline regression of the association between B vitamin intake and the odds ratio of glaucoma based on ISGEO criteria after controlling for age, sex, race, educational level, smoking, diabetes, cataract surgery, daily total energy, caffeine intake and interacted vitamin b. (A) Vitamin B1; (B) Vitamin B2; (C) Niacin; (D) Vitamin B6; (E) Folic acid; (F) Vitamin B12



Supplement Fig S5 Restricted cubic spline regression of the association between B vitamin intake and the odds ratio of glaucoma based on ISGEO criteria in males after controlling for age, race, educational level, smoking, diabetes, cataract surgery, daily total energy, caffeine intake and interacted vitamin b. (A) Vitamin B1; (B) Vitamin B2; (C) Niacin; (D) Vitamin B6; (E) Folic acid; (F) Vitamin B12



Supplement Fig S6 Restricted cubic spline regression of the association between B vitamin intake and the odds ratio of glaucoma based on ISGEO criteria in females after controlling for age, race, educational level, smoking, diabetes, cataract surgery, daily total energy, caffeine intake and interacted vitamin b. (A) Vitamin B1; (B) Vitamin B2; (C) Niacin; (D) Vitamin B6; (E) Folic acid; (F) Vitamin B12