

## Supplementary Materials

### **Spatiotemporal dynamics of the social structure of Indo-Pacific humpback dolphins (*Sousa chinensis*) in Xiamen waters from 2007 to 2019**

Yi Lu<sup>1</sup>, Xin-Rong Xu<sup>1</sup>, Bing-Yao Chen<sup>1,\*</sup>, Thomas A Jefferson<sup>2</sup>, Holly Fearnbach<sup>3</sup>,

Guang Yang<sup>1,4,\*</sup>

<sup>1</sup> Jiangsu Key Laboratory for Biodiversity and Biotechnology, College of Life Sciences, Nanjing Normal University, Nanjing, Jiangsu 210023, China

<sup>2</sup> Clymene Enterprises, Lakeside, California 92040, USA

<sup>3</sup> Marine Mammal Research, SR3, SeaLife Response, Rehabilitation and Research, WA 98275, USA

<sup>4</sup> Southern Marine Science and Engineering Guangdong Laboratory (Guangzhou), No. 1119, Haibin Road, Nansha District, Guangzhou, Guangdong 511458, China

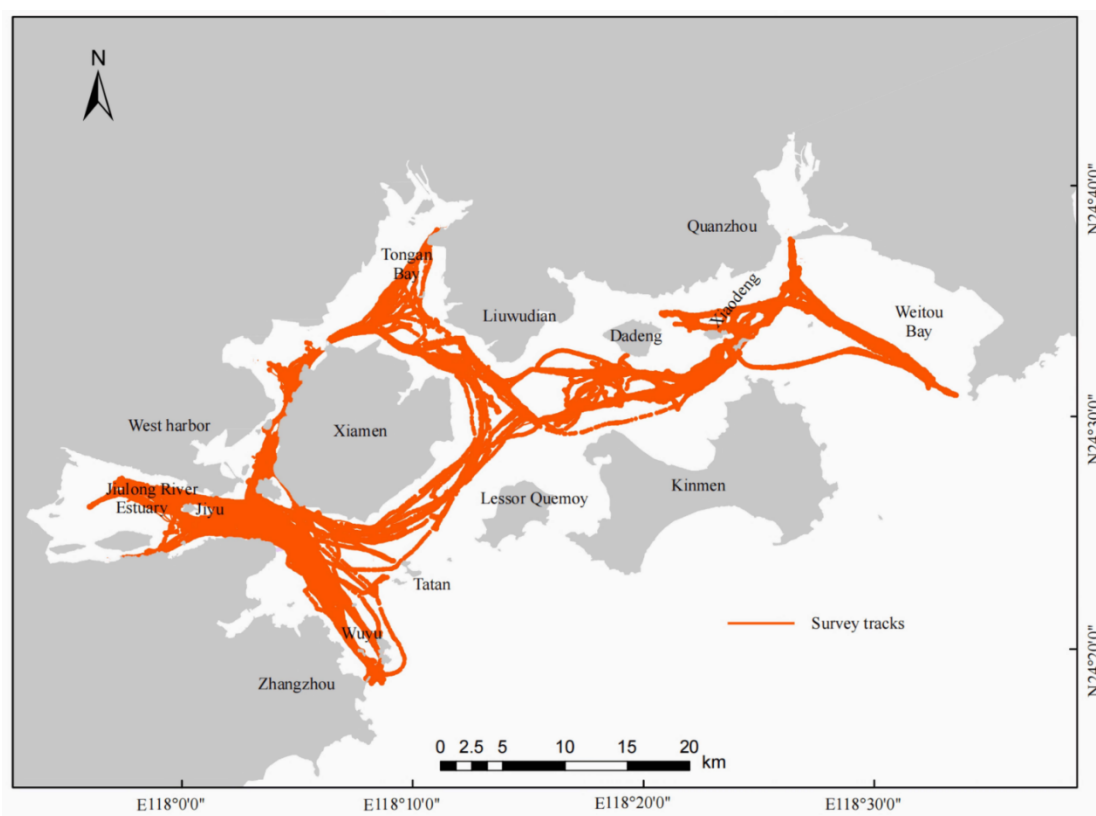
\*Corresponding authors, E-mail: [chby2632@163.com](mailto:chby2632@163.com); [gyang@njnu.edu.cn](mailto:gyang@njnu.edu.cn)

## SUPPLEMENTARY METHODS

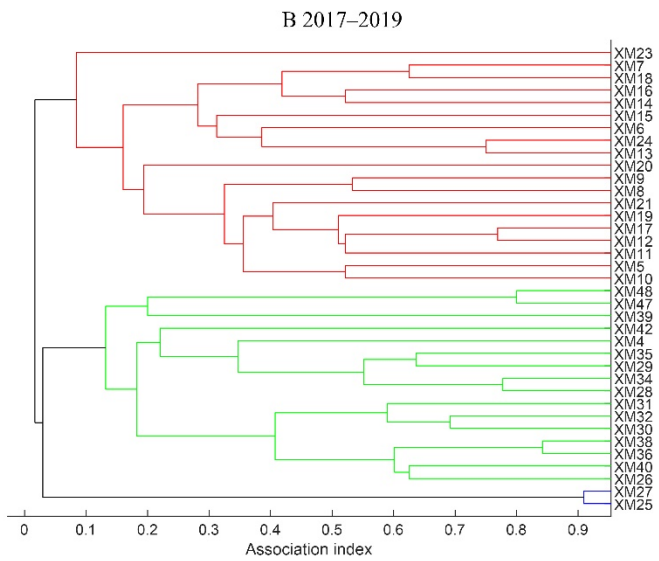
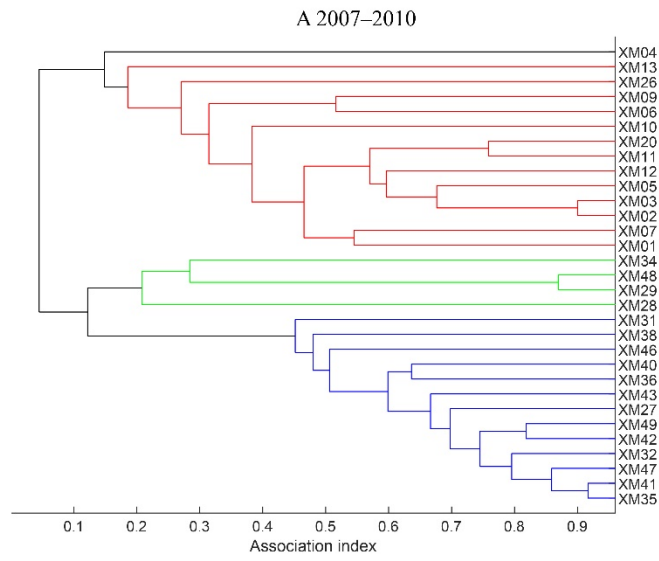
Photographs were graded as ‘excellent’, ‘good’, or ‘poor’ according to clarity, contrast, angle, and size of the dorsal fin in the frame (Chen et al., 2018; Hunt et al., 2017). Each photograph quality parameter received a score between 2 and 10 (The higher the score, the better the quality). These scores were then summed and divided by four to achieve an overall image quality (Q) score out of 10. Photographs of excellent grade were those with a Q value 8–10, those with a good grade were Q 5–7, and a poor grade was Q < 5.

## REFERENCES

- Chen BY, Gao HL, Jefferson TA, et al. 2018. Survival rate and population size of Indo-Pacific humpback dolphins (*Sousa chinensis*) in Xiamen Bay, China. *Marine Mammal Science*, **34**(4): 1018–1033.
- Hunt TN, Bejder L, Allen SJ, et al. 2017. Demographic characteristics of Australian humpback dolphins reveal important habitat toward the southwestern limit of their range. *Endangered Species Research*, **32**: 71–88.



Supplementary Figure S1 Historical survey tracks



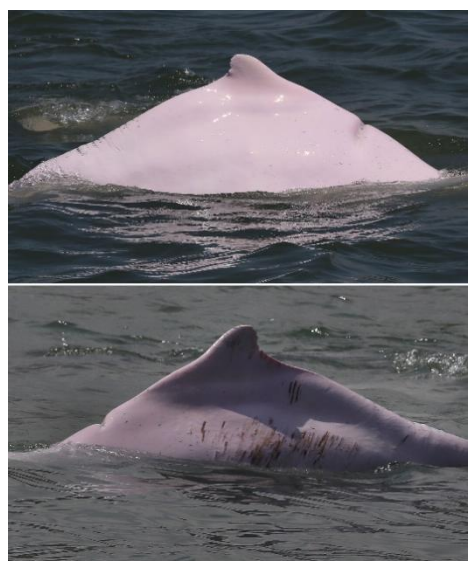
**Supplementary Figure S2 Average-linkage cluster analysis for HWI matrix of individual Indo-Pacific humpback dolphins classified as inner**  
 Associations between individuals sighted on five or more occasions. A: 2007–2010; B: 2017–2019.

**Supplementary Table S1 Example images of identical individuals identified in both 2007–2010 and 2017–2019 (Photos by Yi Lu and Xin-Rong Xu)**

Period	2007–2010	2017–2019
--------	-----------	-----------



(XM01)

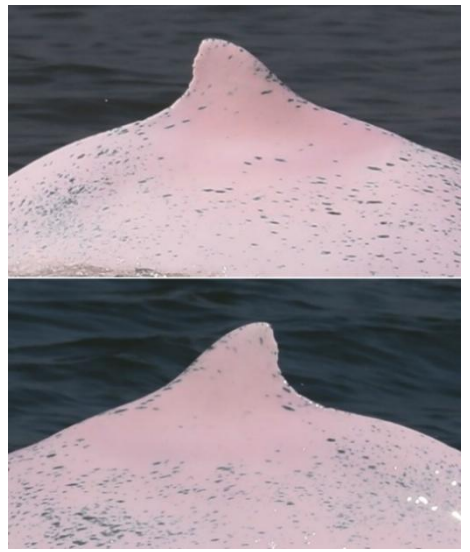


(XM8)

Example image



(XM03)



(XM7)



(XM41)



(XM36)