

Mass spectra of the non-tentatively identifiable compounds newly transformed by both the aerobic membrane bioreactor and anaerobic membrane bioreactor.

Comparison of Trace Organic Chemical Removal Efficiencies between Aerobic and Anaerobic Membrane Bioreactors Treating Municipal Wastewater

Jade L. Johnson^{†‡}, Nathan G. Dodder^{†‡}, Natalie Mladenov^{§*}, Lauren Steinberg^{§↓}, William Richardot[‡], Eunha Hoh^{†*}

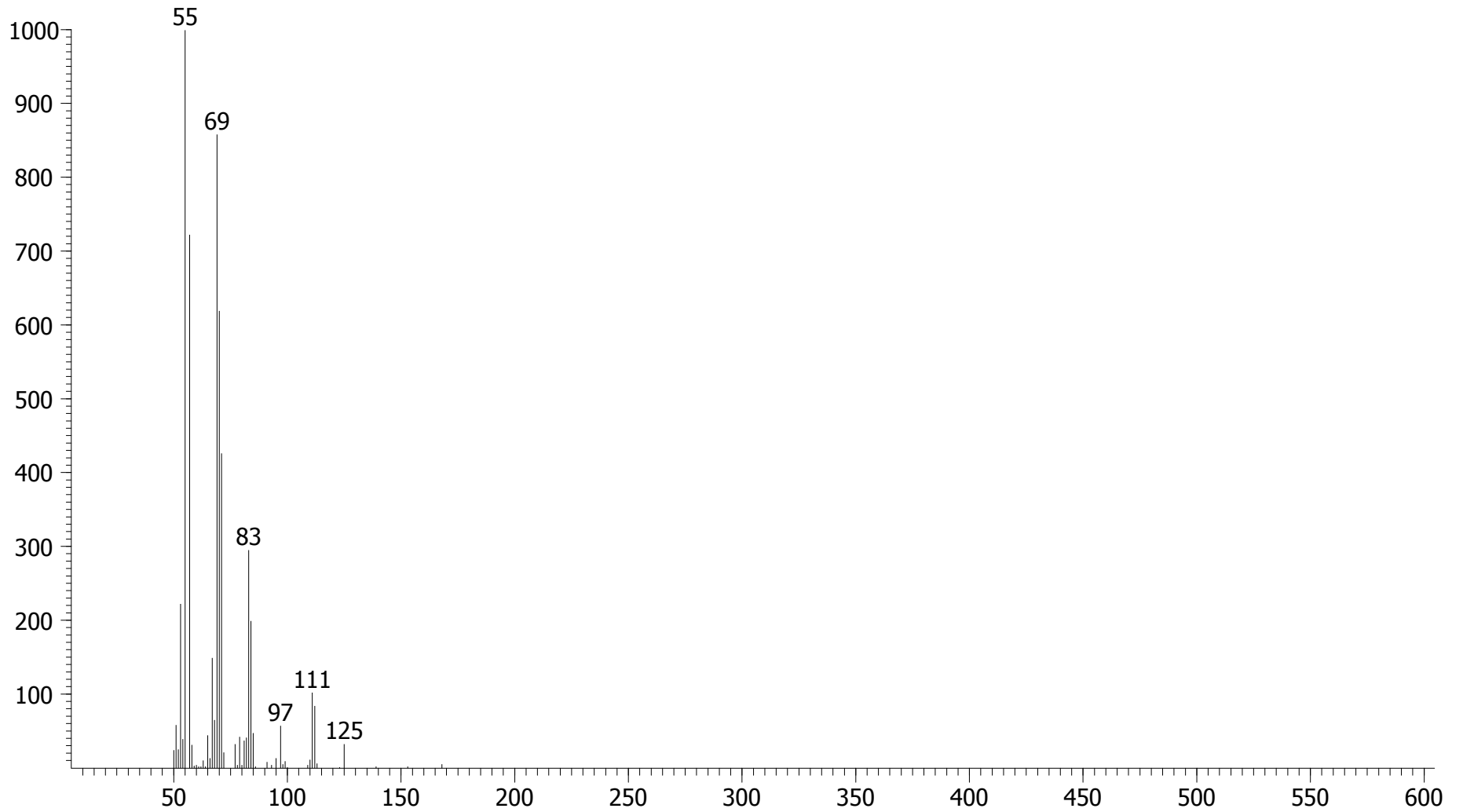
[†] School of Public Health, San Diego State University, San Diego, California 92182 United States; [‡] San Diego State University Research Foundation, San Diego, California 92182 United States; [§] Department of Civil, Construction, and Environmental Engineering, San Diego State University, San Diego, California 92182, United States.

* Corresponding author email: Eunha Hoh (ehoh@sdsu.edu) and Natalie Mladenov (nmladenov@sdsu.edu)

Prepared: 2023-01-27

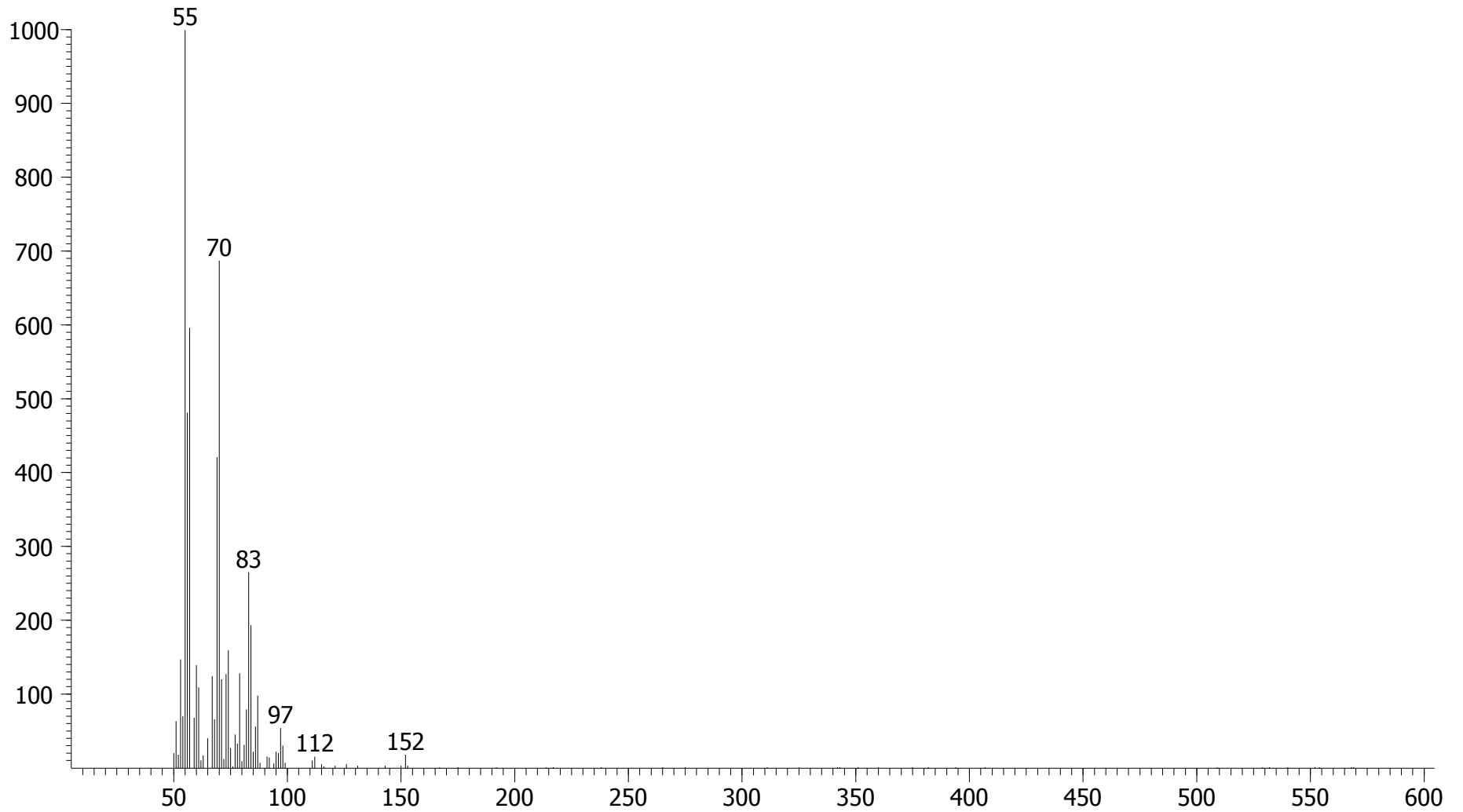
1st Dimension R.T. = 696.876
2nd Dimension R.T. = 1.122
Quant Mass(es) = 70
S/N = 1015.2
Area = 240696
Height = 26690
Similarity = 836

Peak True - sample "AnMbr B (20191120):1", peak 478, at 696.876 , 1.122 sec , sec (Spec # 33030)



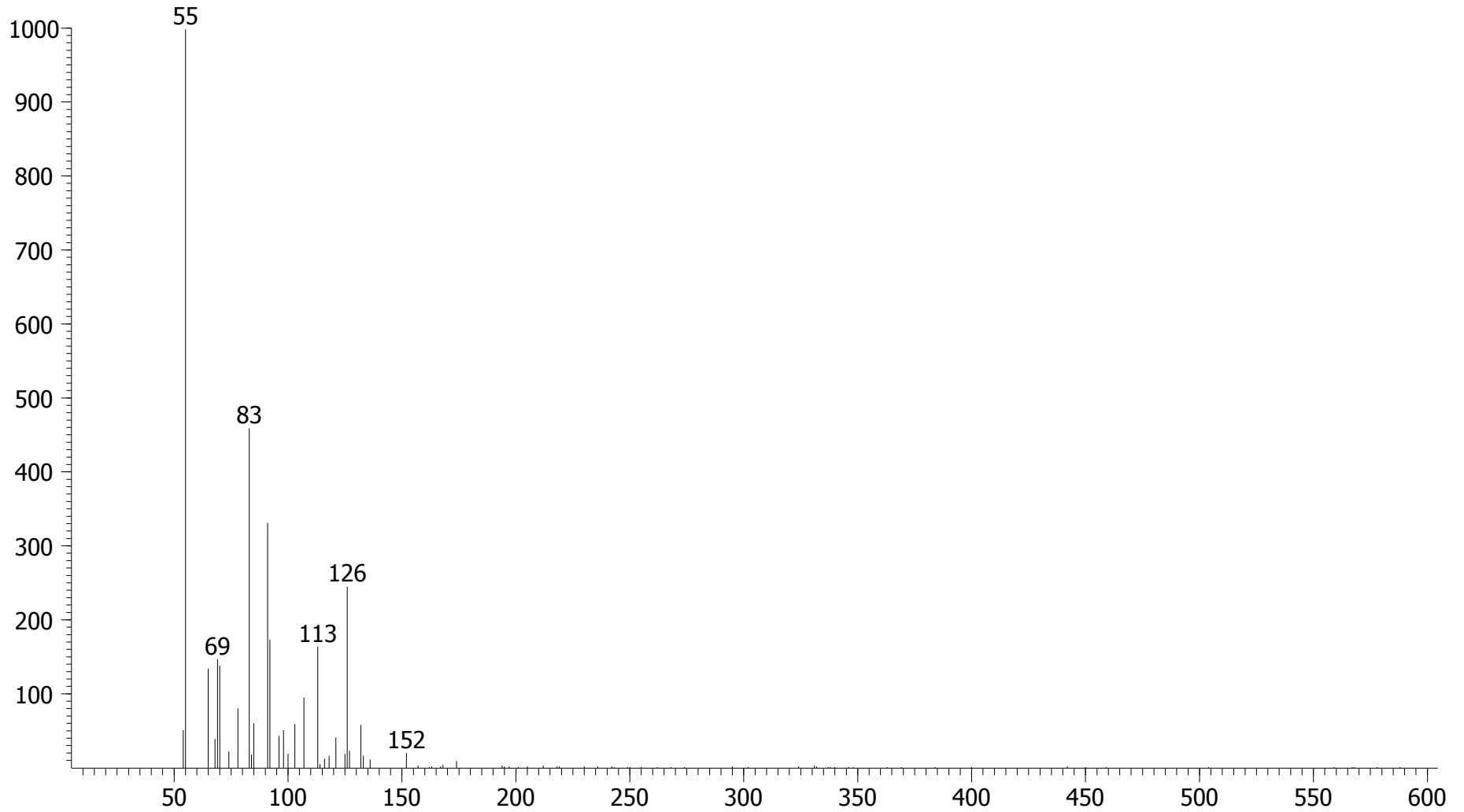
1st Dimension R.T. = 787.824
2nd Dimension R.T. = 1.307
Quant Mass(es) = 70
S/N = 200.67
Area = 52143
Height = 6455.0
Similarity = 778

Peak True - sample "AnMbr B (20191120):1", peak 776, at 787.824 , 1.307 sec , sec (Spec # 46838)



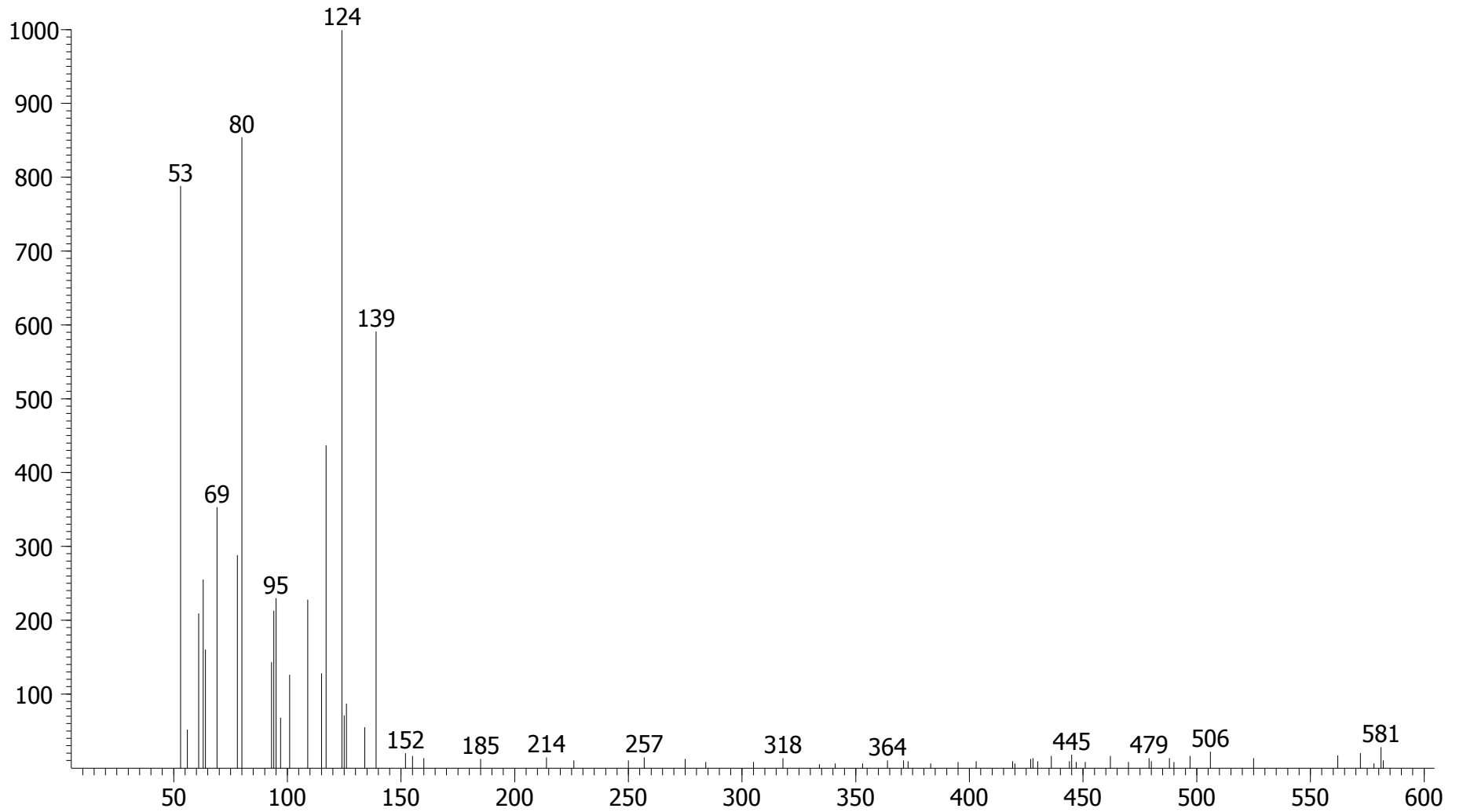
1st Dimension R.T. = 1001.2
2nd Dimension R.T. = 1.881
Quant Mass(es) = 126
S/N = 110.39
Area = 9360.2
Height = 1174.5
Similarity = 605

Peak True - sample "AnMbr B (20191120):1", peak 1629, at 1001.2 , 1.881 sec , sec (Spec # 79255)



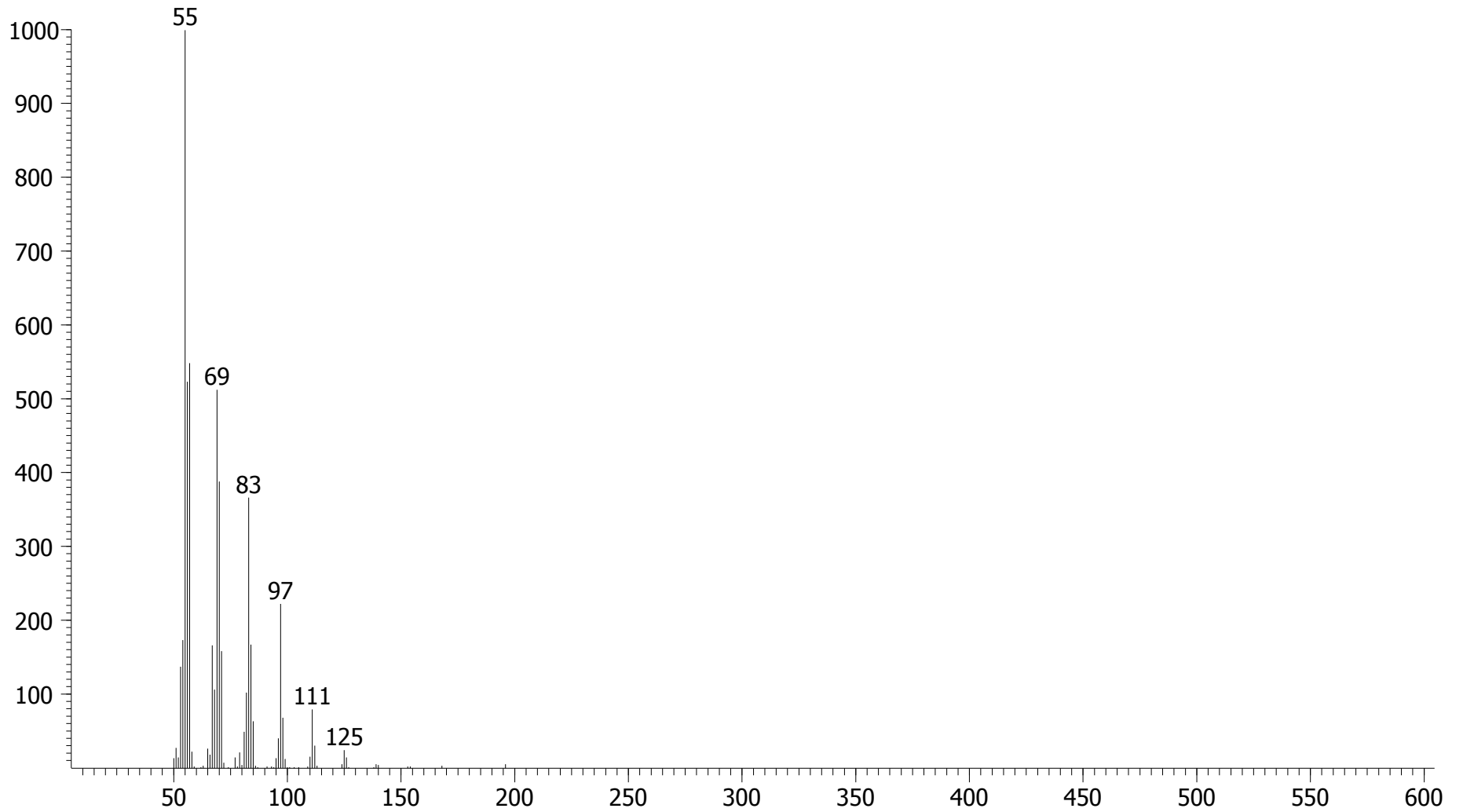
1st Dimension R.T. = 1015.19
2nd Dimension R.T. = 2.132
Quant Mass(es) = 124
S/N = 79.212
Area = 8317.8
Height = 819.48
Similarity = 631

Peak True - sample "AnMbr B (20191120):1", peak 1696, at 1015.19 , 2.132 sec , sec (Spec # 81413)



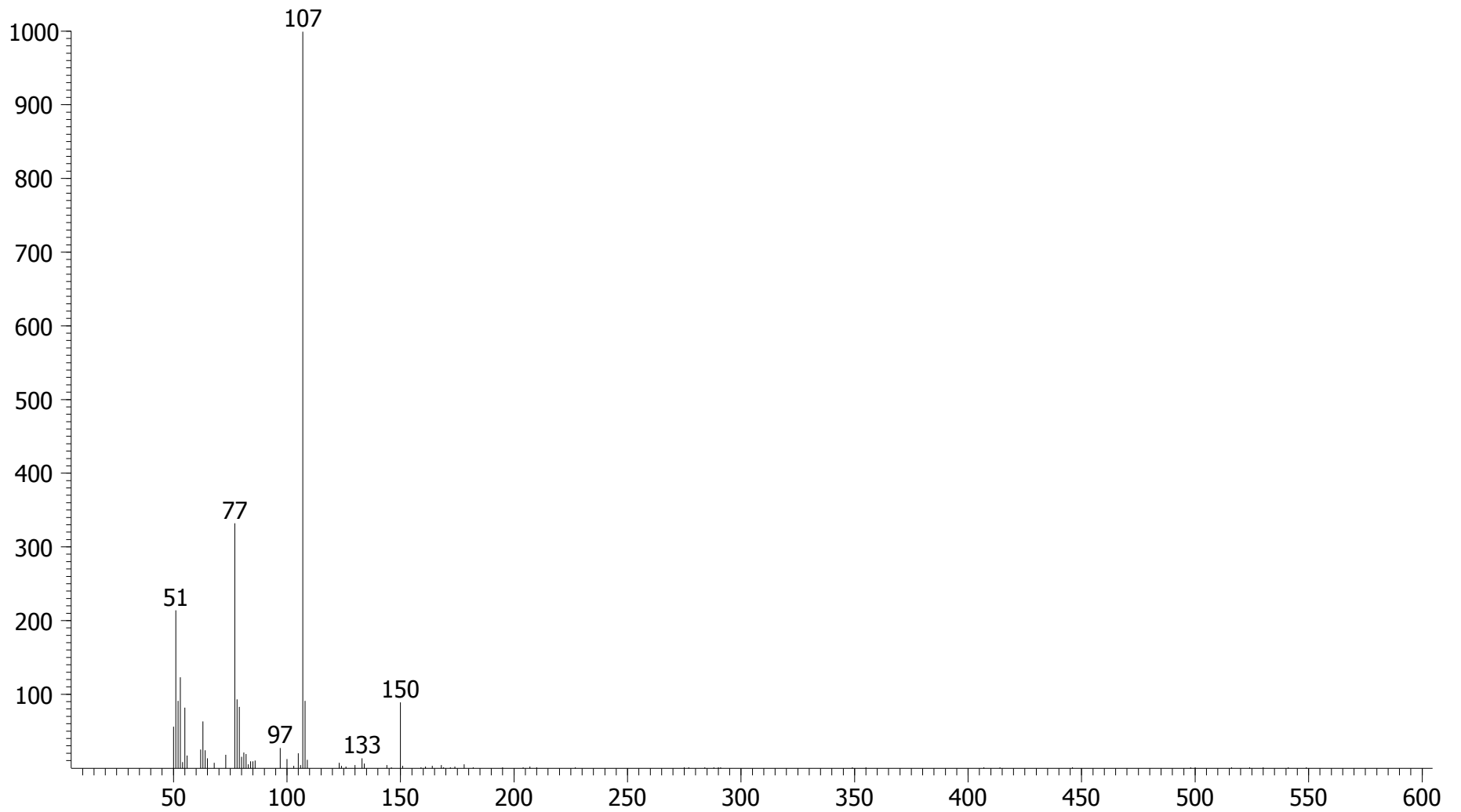
1st Dimension R.T. = 1113.14
2nd Dimension R.T. = 1.188
Quant Mass(es) = 56
S/N = 1718.9
Area = 984511
Height = 164314
Similarity = 946

Peak True - sample "AnMbr B (20191120):1", peak 2095, at 1113.14 , 1.188 sec , sec (Spec # 96110)



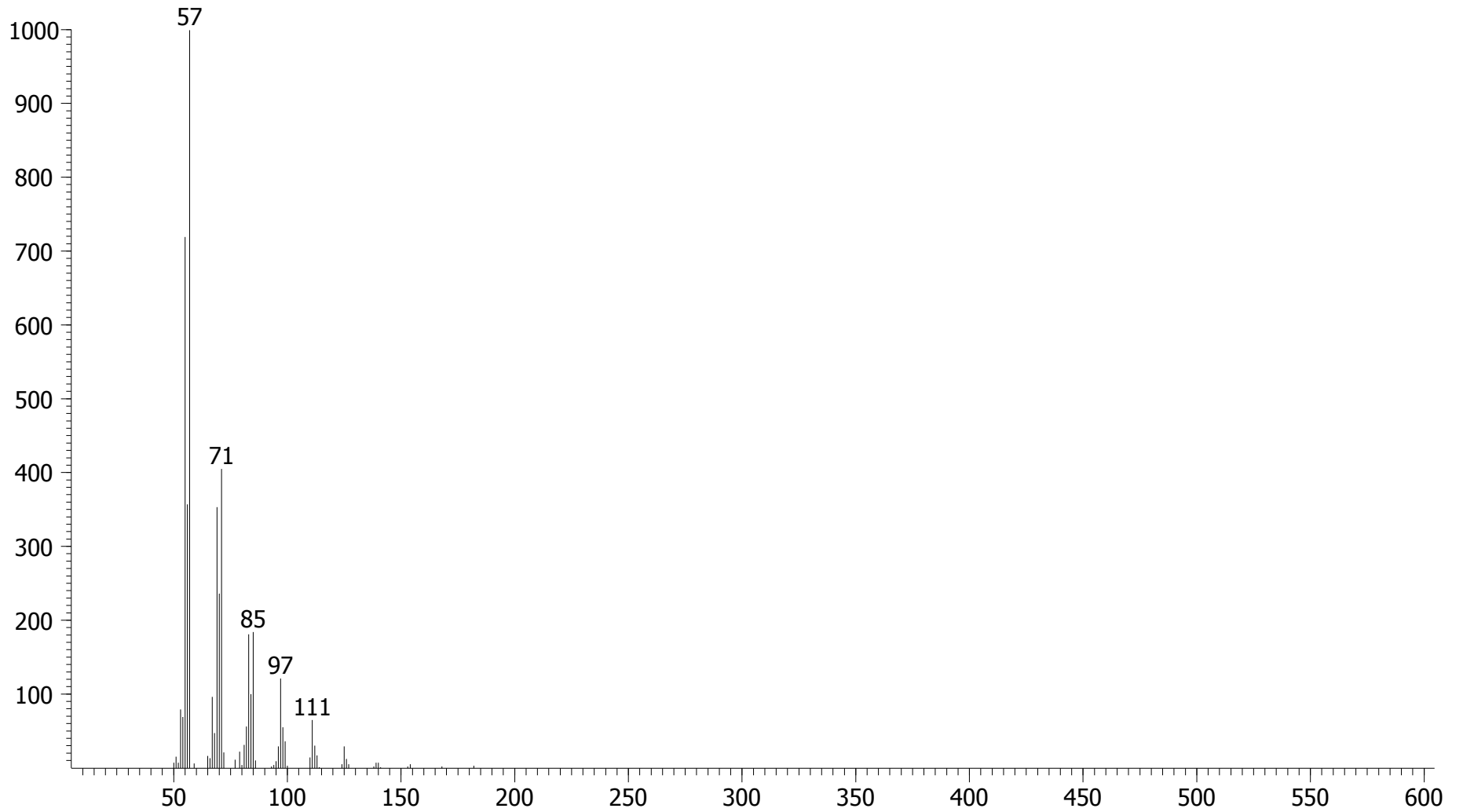
1st Dimension R.T. = 1211.08
2nd Dimension R.T. = 2.145
Quant Mass(es) = 107
S/N = 74.238
Area = 186825
Height = 17316
Similarity = 877

Peak True - sample "AnMbr B (20191120):1", peak 2571, at 1211.08 , 2.145 sec , sec (Spec # 111095)



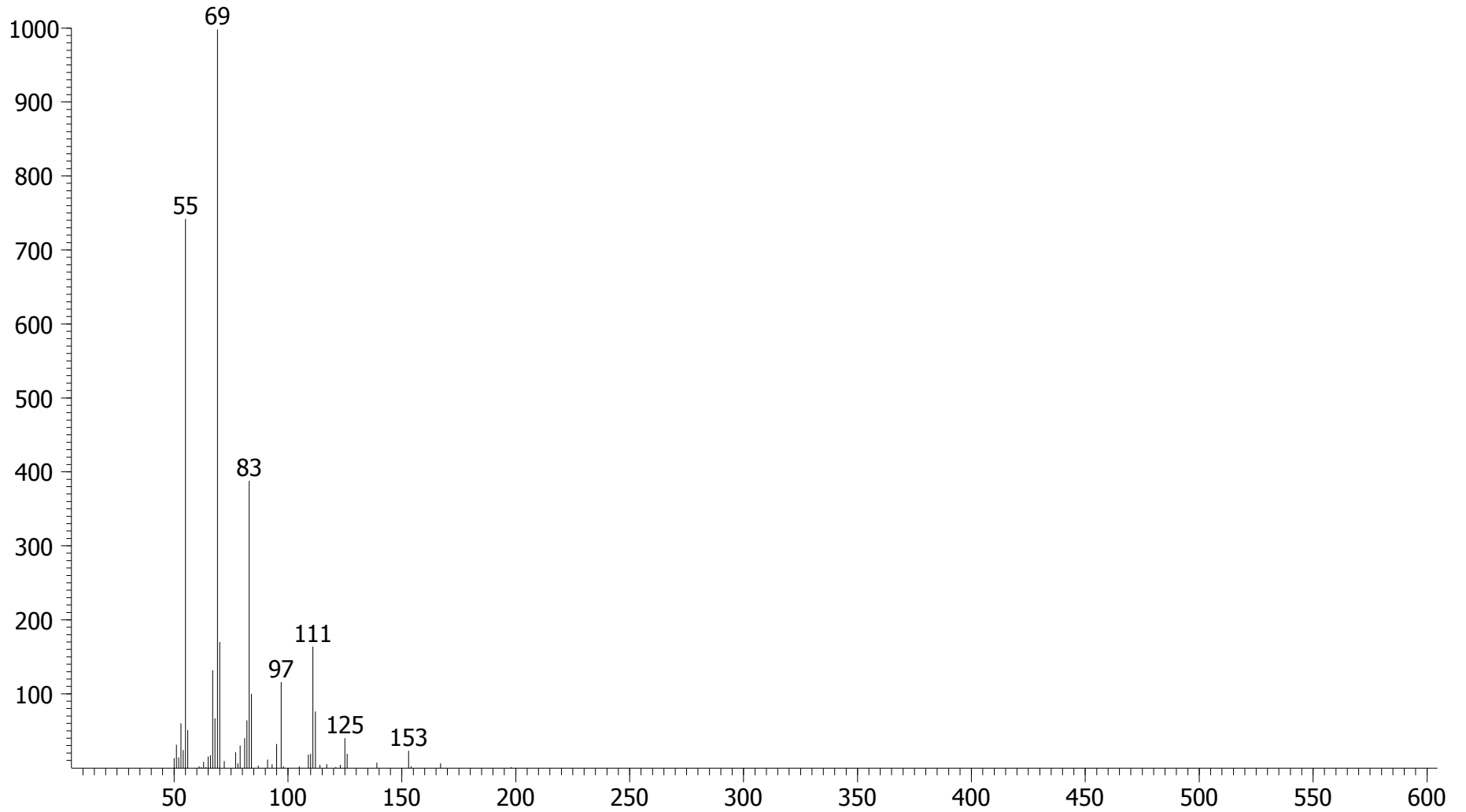
1st Dimension R.T. = 1274.05
2nd Dimension R.T. = 1.313
Quant Mass(es) = 57
S/N = 917.94
Area = 3105900
Height = 406062
Similarity = 943

Peak True - sample "AnMbr B (20191120):1", peak 2881, at 1274.05 , 1.313 sec , sec (Spec # 120509)



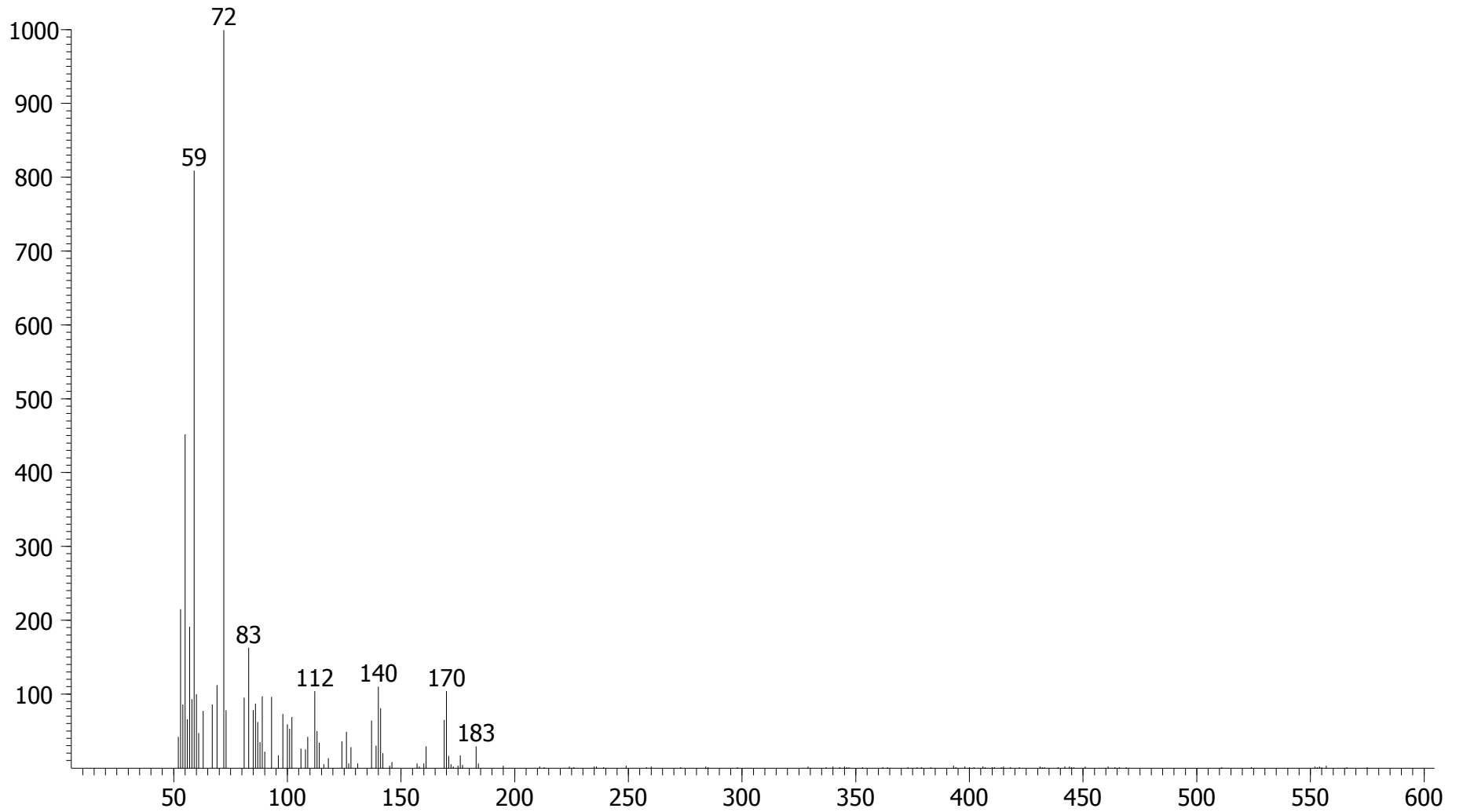
1st Dimension R.T. = 1309.03
2nd Dimension R.T. = 1.162
Quant Mass(es) = 69
S/N = 733.08
Area = 180051
Height = 26823
Similarity = 836

Peak True - sample "AnMbr B (20191120):1", peak 3049, at 1309.03 , 1.162 sec , sec (Spec # 125786)



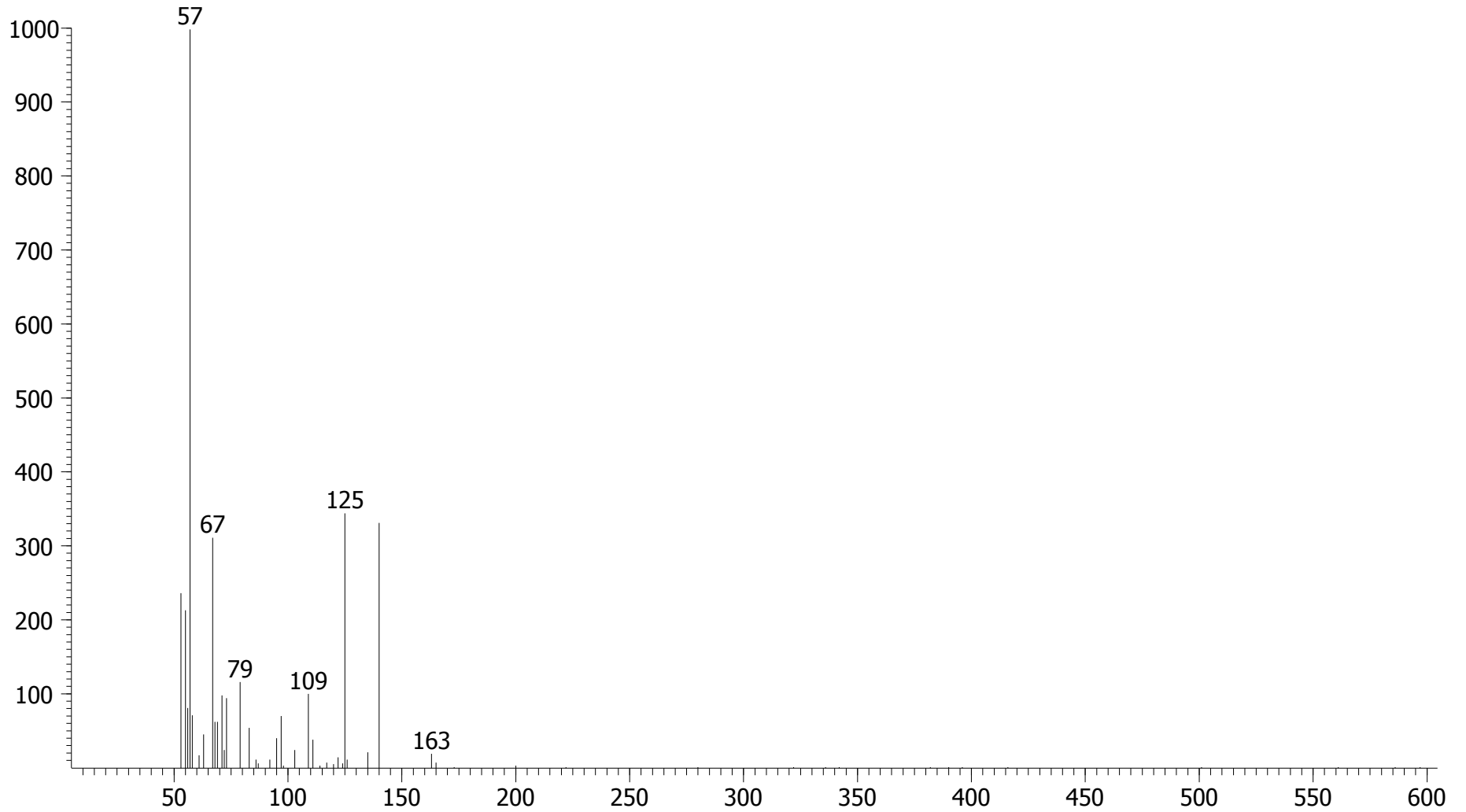
1st Dimension R.T. = 1333.51
2nd Dimension R.T. = 1.907
Quant Mass(es) = 72
S/N = 258.92
Area = 66364
Height = 6551.2
Similarity = 780

Peak True - sample "AnMbr B (20191120):1", peak 3176, at 1333.51 , 1.907 sec , sec (Spec # 129609)



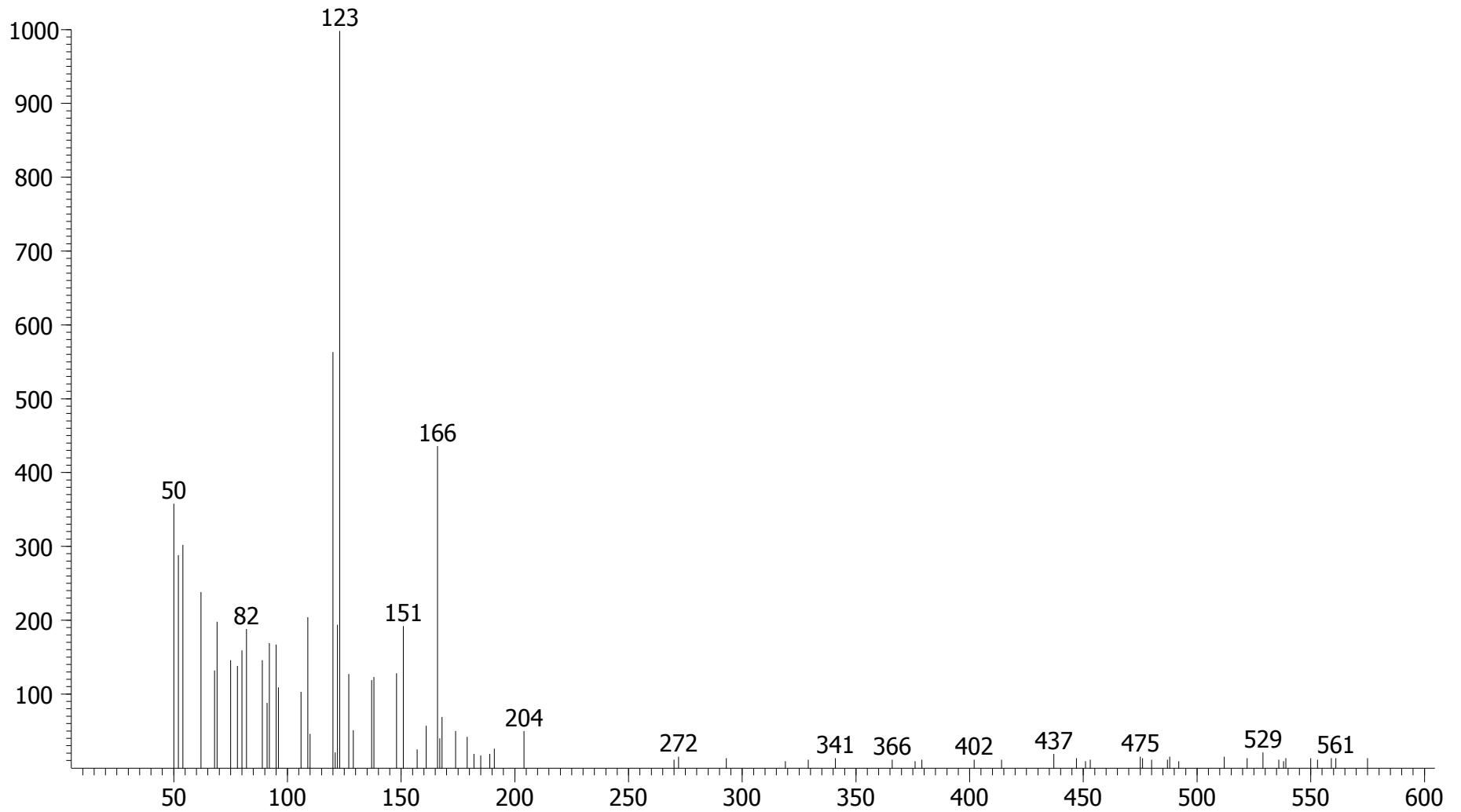
1st Dimension R.T. = 1351
2nd Dimension R.T. = 1.802
Quant Mass(es) = 140
S/N = 325.44
Area = 26599
Height = 2767.2
Similarity = 650

Peak True - sample "AnMbr B (20191120):1", peak 3280, at 1351 , 1.802 sec , sec (Spec # 132243)



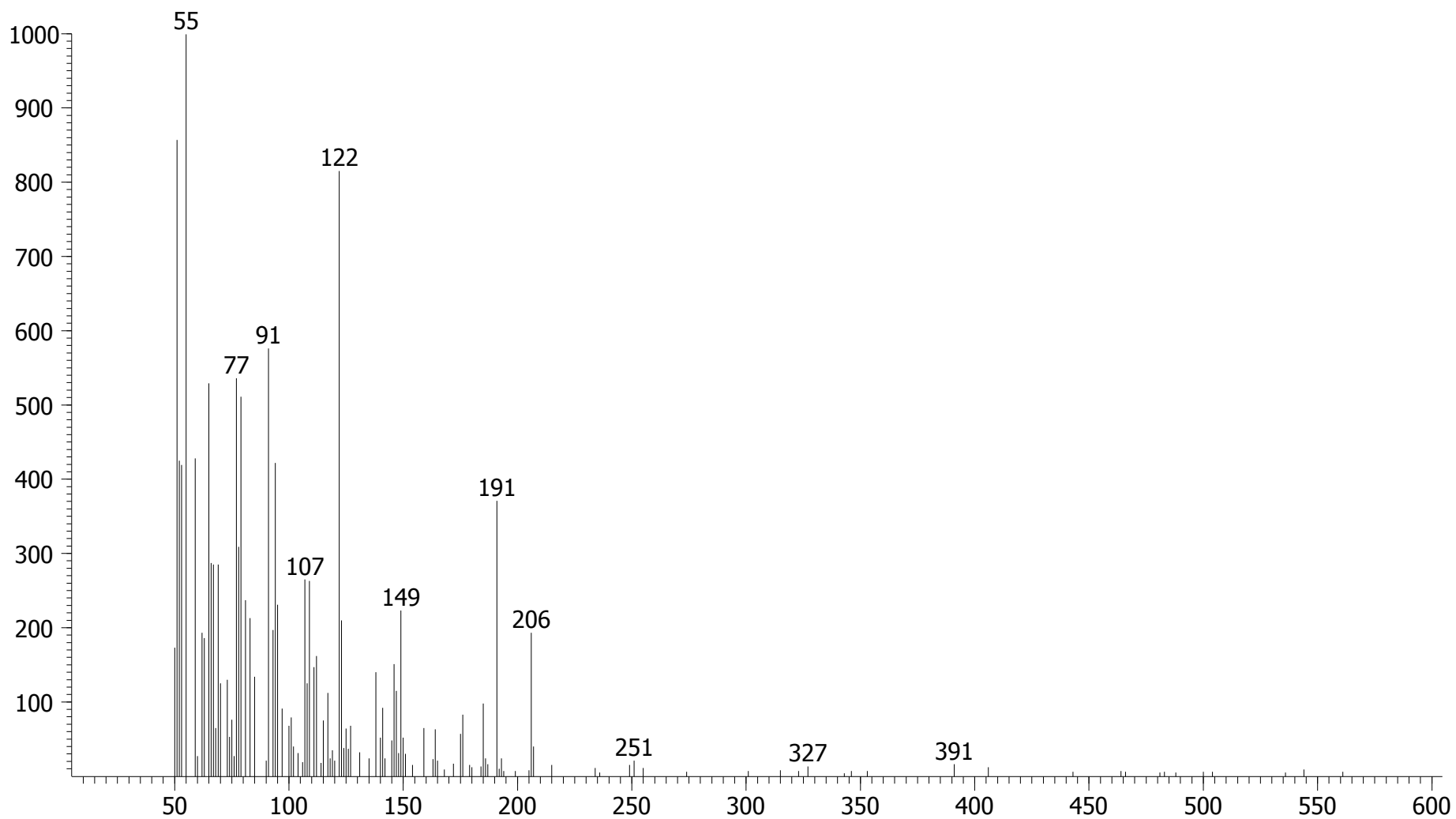
1st Dimension R.T. = 1382.48
2nd Dimension R.T. = 2.218
Quant Mass(es) = 123
S/N = 63.888
Area = 6500.1
Height = 660.91
Similarity = 626

Peak True - sample "AnMbr B (20191120):1", peak 3450, at 1382.48 , 2.218 sec , sec (Spec # 137076)



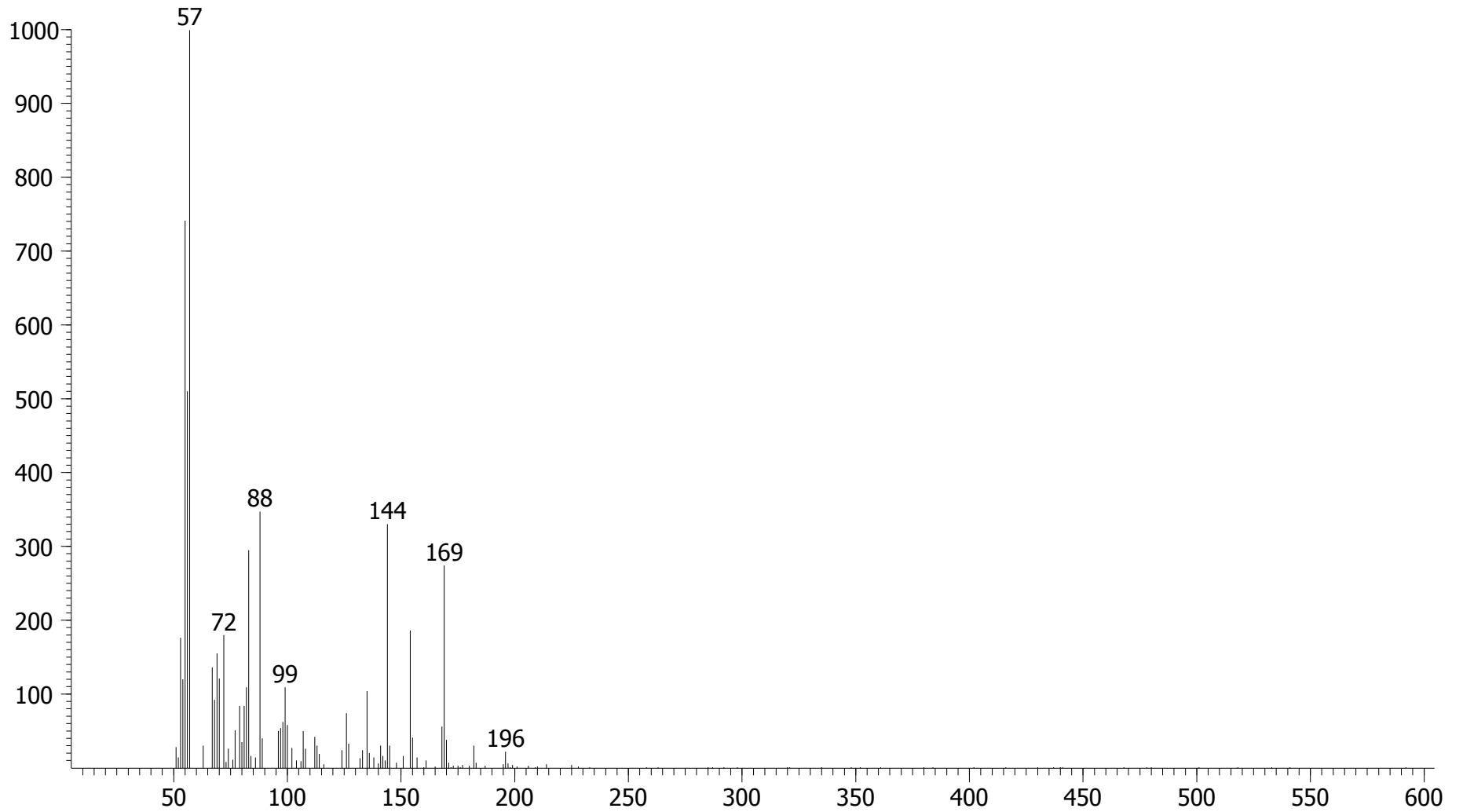
1st Dimension R.T. = 1459.44
2nd Dimension R.T. = 2.165
Quant Mass(es) = 191
S/N = 79.892
Area = 4522.8
Height = 463.33
Similarity = 603

Peak True - sample "AnMbr B (20191120):1", peak 3814, at 1459.44 , 2.165 sec , sec (Spec # 148728)



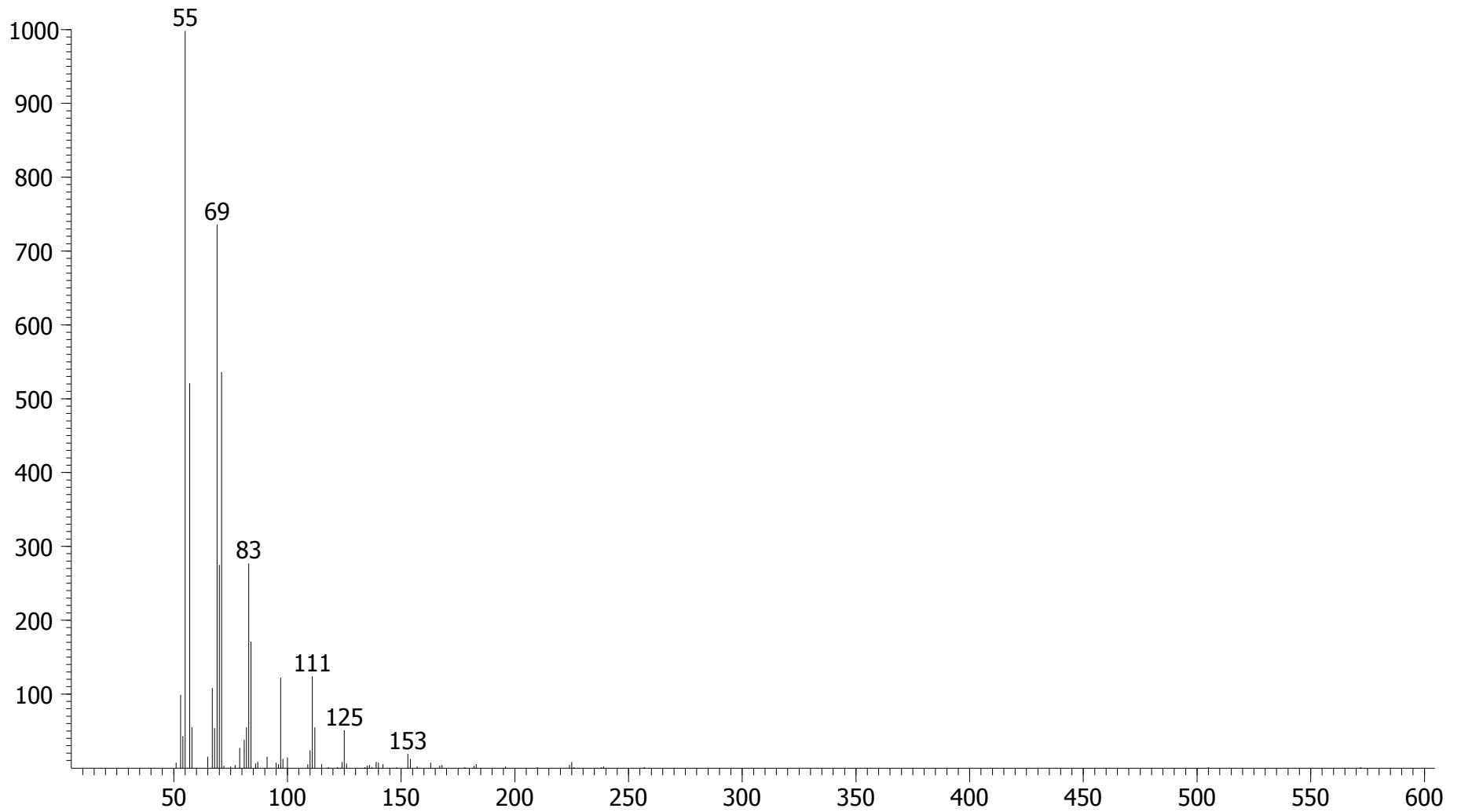
1st Dimension R.T. = 1522.4
2nd Dimension R.T. = 1.657
Quant Mass(es) = 144
S/N = 227.69
Area = 24783
Height = 2783.2
Similarity = 587

Peak True - sample "AnMbr B (20191120):1", peak 4104, at 1522.4 , 1.657 sec , sec (Spec # 158191)



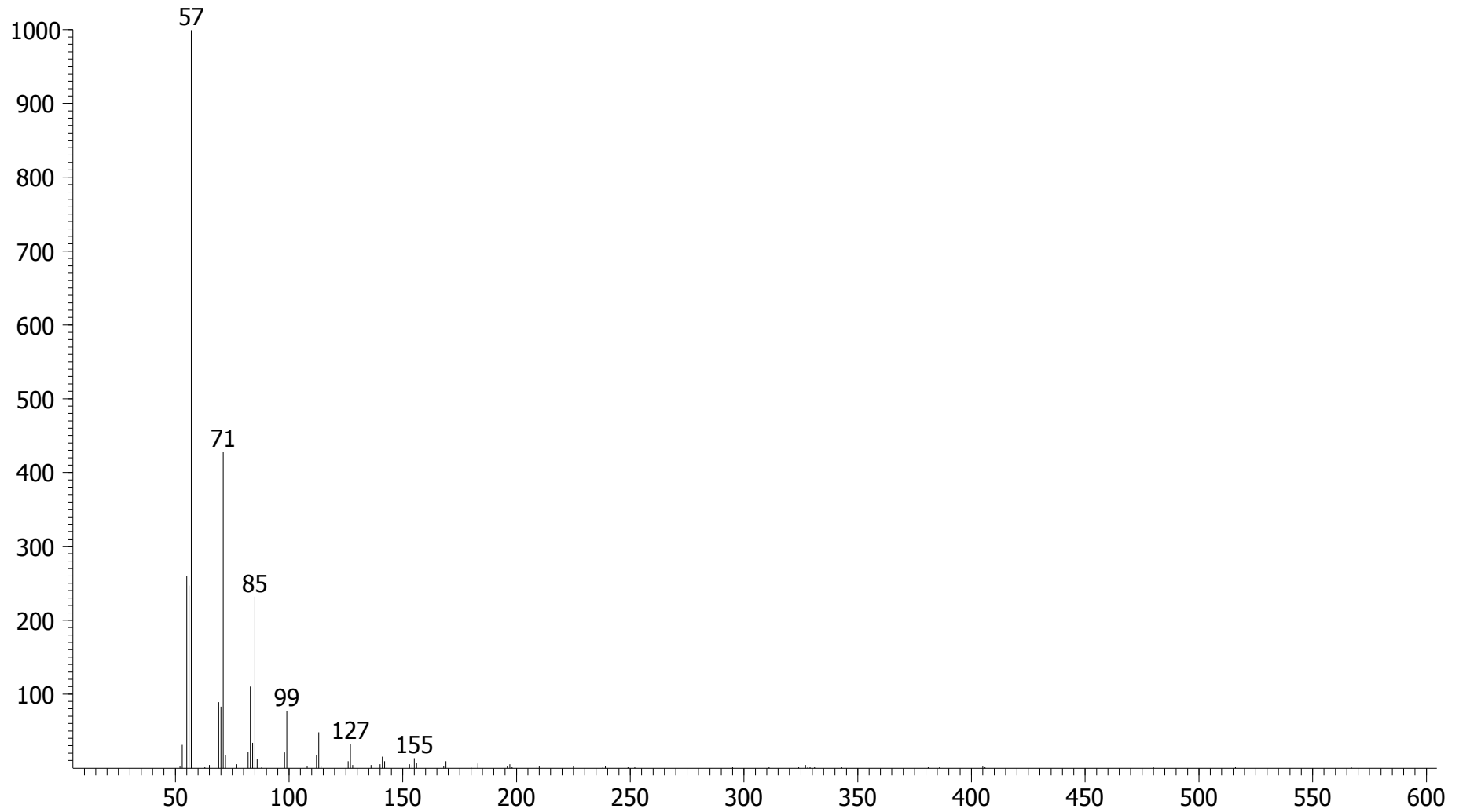
1st Dimension R.T. = 1543.39
2nd Dimension R.T. = 1.175
Quant Mass(es) = 71
S/N = 158.15
Area = 170899
Height = 15079
Similarity = 883

Peak True - sample "AnMbr B (20191120):1", peak 4192, at 1543.39 , 1.175 sec , sec (Spec # 161298)



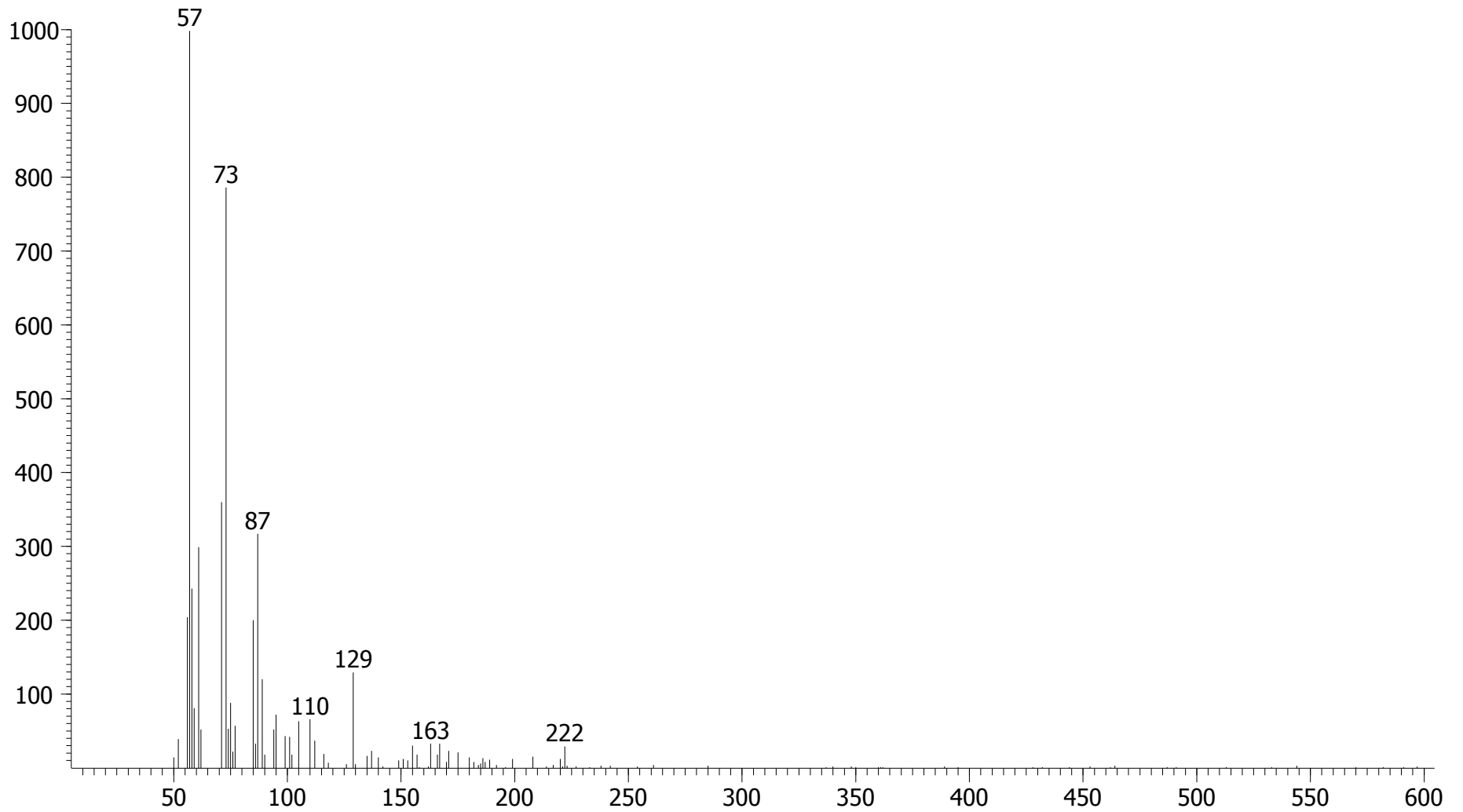
1st Dimension R.T. = 1840.72
2nd Dimension R.T. = 1.195
Quant Mass(es) = 71
S/N = 59.115
Area = 196032
Height = 15720
Similarity = 918

Peak True - sample "AnMbr B (20191120):1", peak 5477, at 1840.72 , 1.195 sec , sec (Spec # 206351)



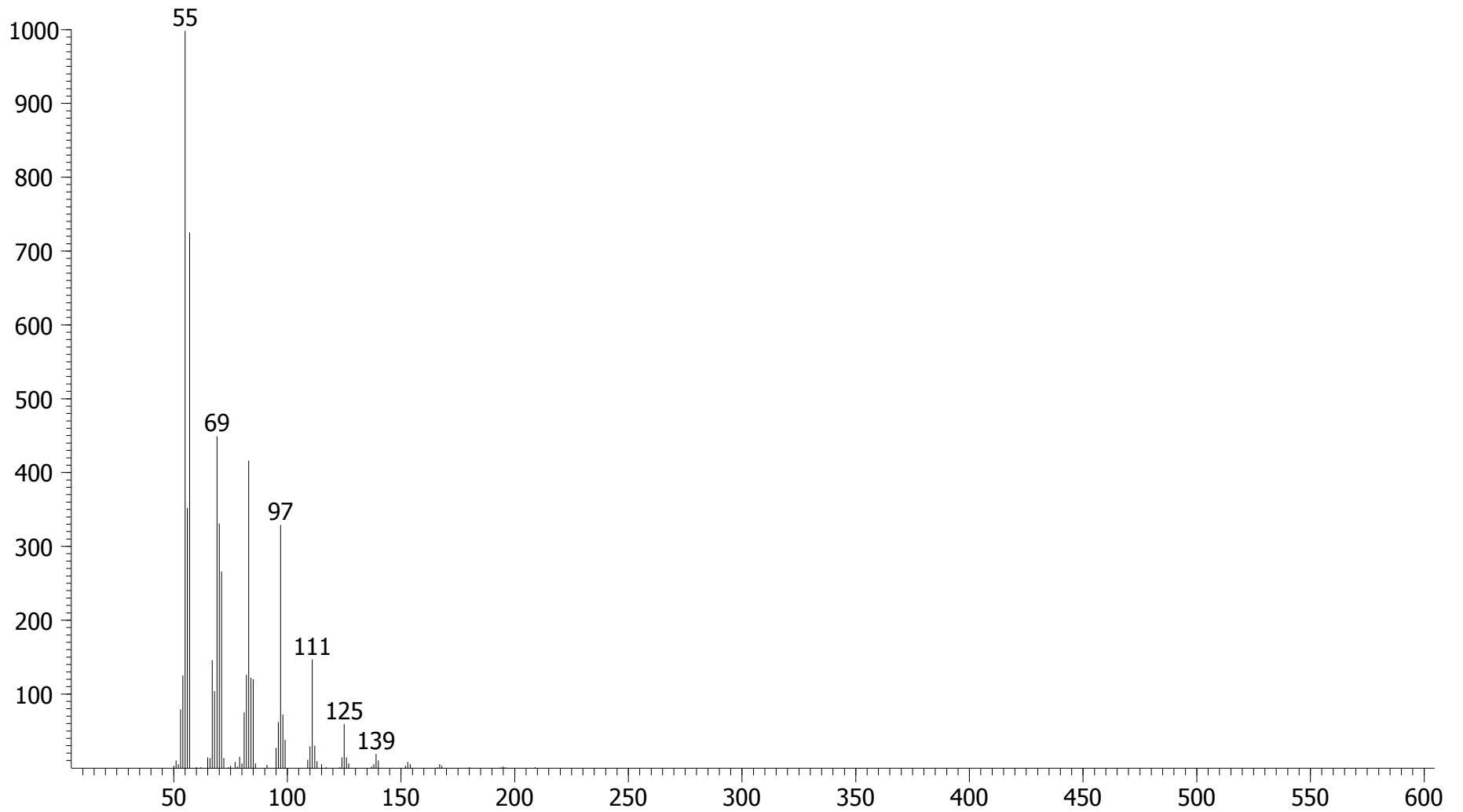
1st Dimension R.T. = 1921.18
2nd Dimension R.T. = 1.492
Quant Mass(es) = 60
S/N = 69.643
Area = 144522
Height = 13149
Similarity = 722

Peak True - sample "AnMbr B (20191120):1", peak 5652, at 1921.18 , 1.492 sec , sec (Spec # 218586)



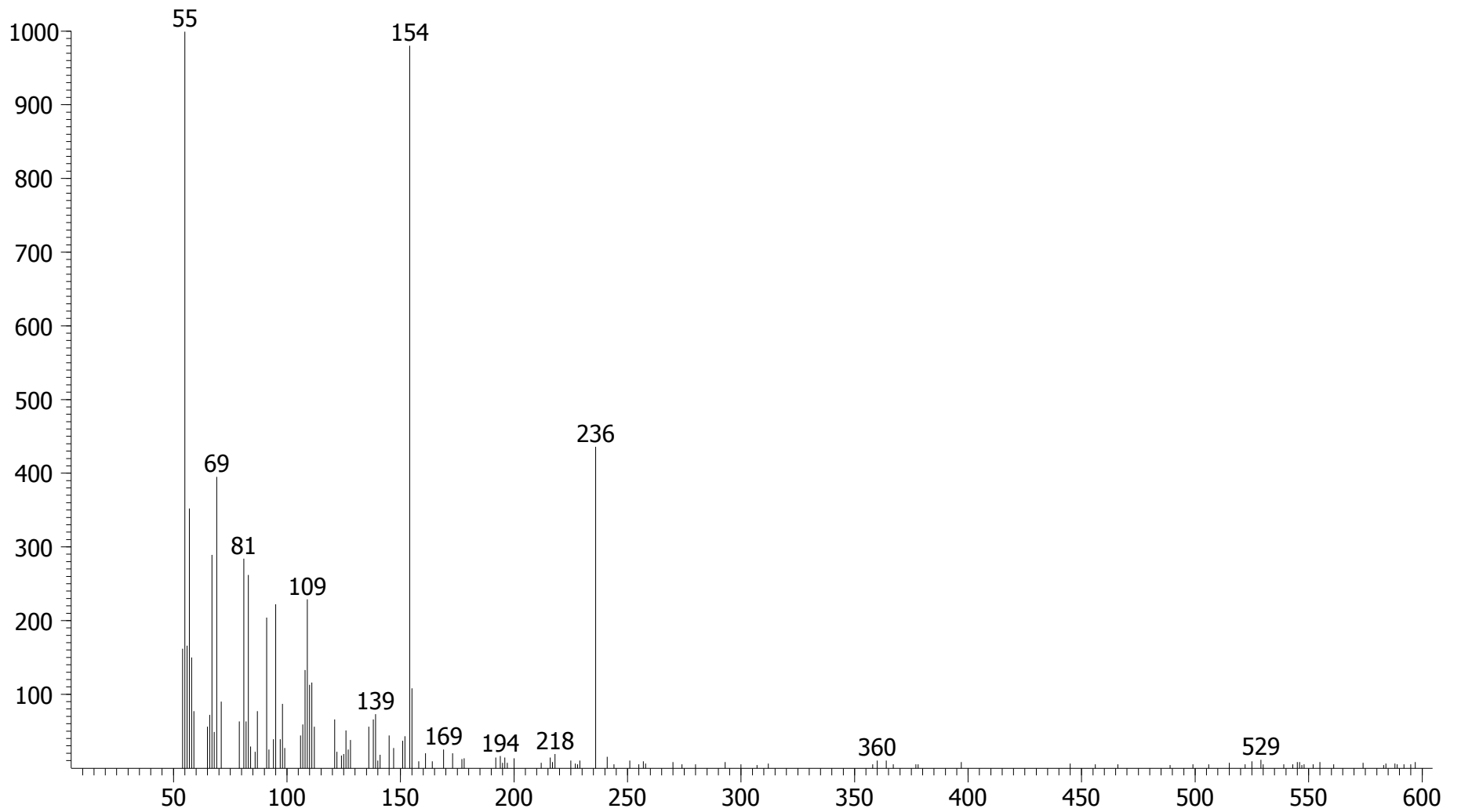
1st Dimension R.T. = 1945.66
2nd Dimension R.T. = 1.261
Quant Mass(es) = 97
S/N = 579.11
Area = 285873
Height = 30979
Similarity = 952

Peak True - sample "AnMbr B (20191120):1", peak 5710, at 1945.66 , 1.261 sec , sec (Spec # 222261)



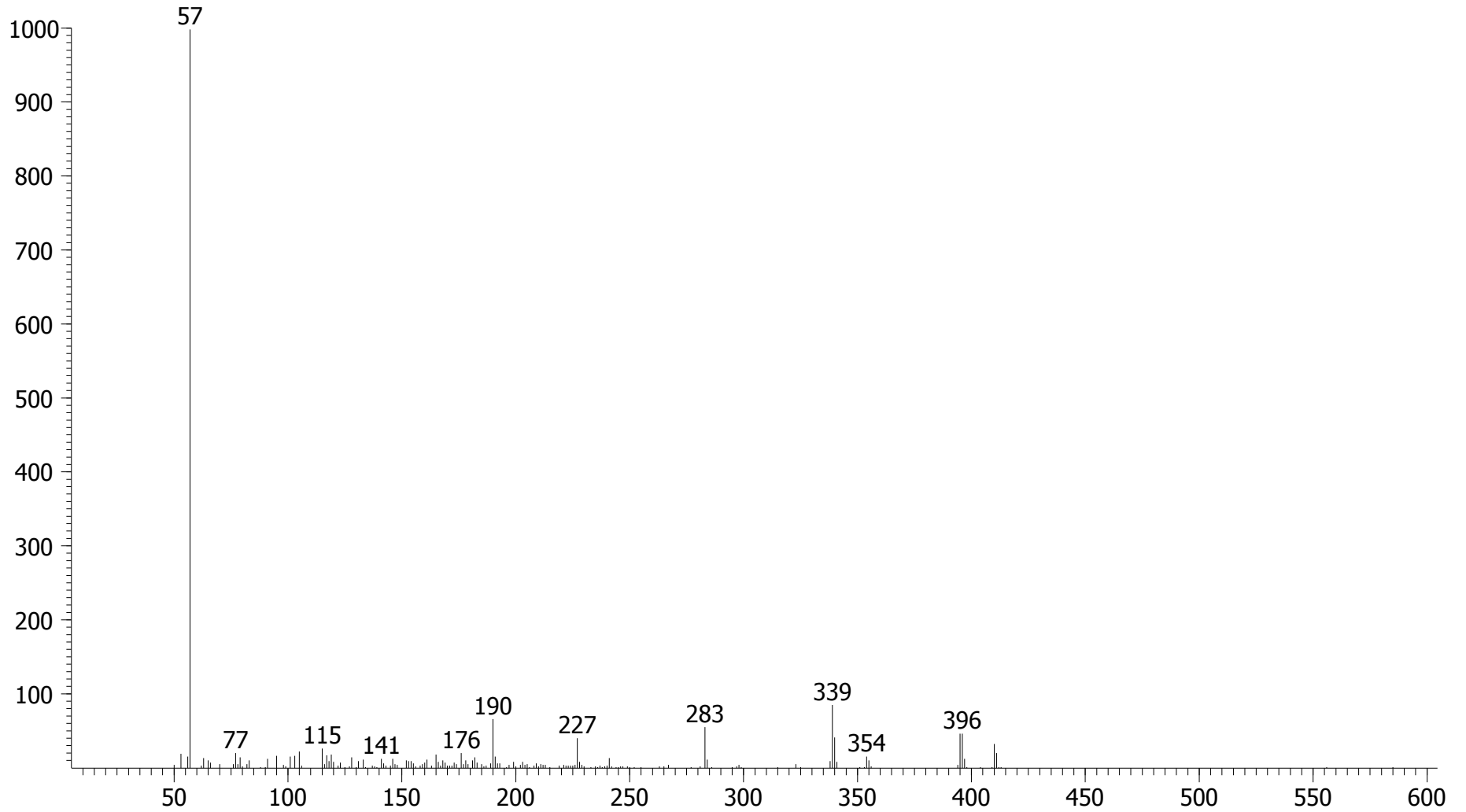
1st Dimension R.T. = 2078.59
2nd Dimension R.T. = 2.033
Quant Mass(es) = 154
S/N = 88.904
Area = 16469
Height = 1541.6
Similarity = 607

Peak True - sample "AnMbr B (20191120):1", peak 6029, at 2078.59 , 2.033 sec , sec (Spec # 242518)



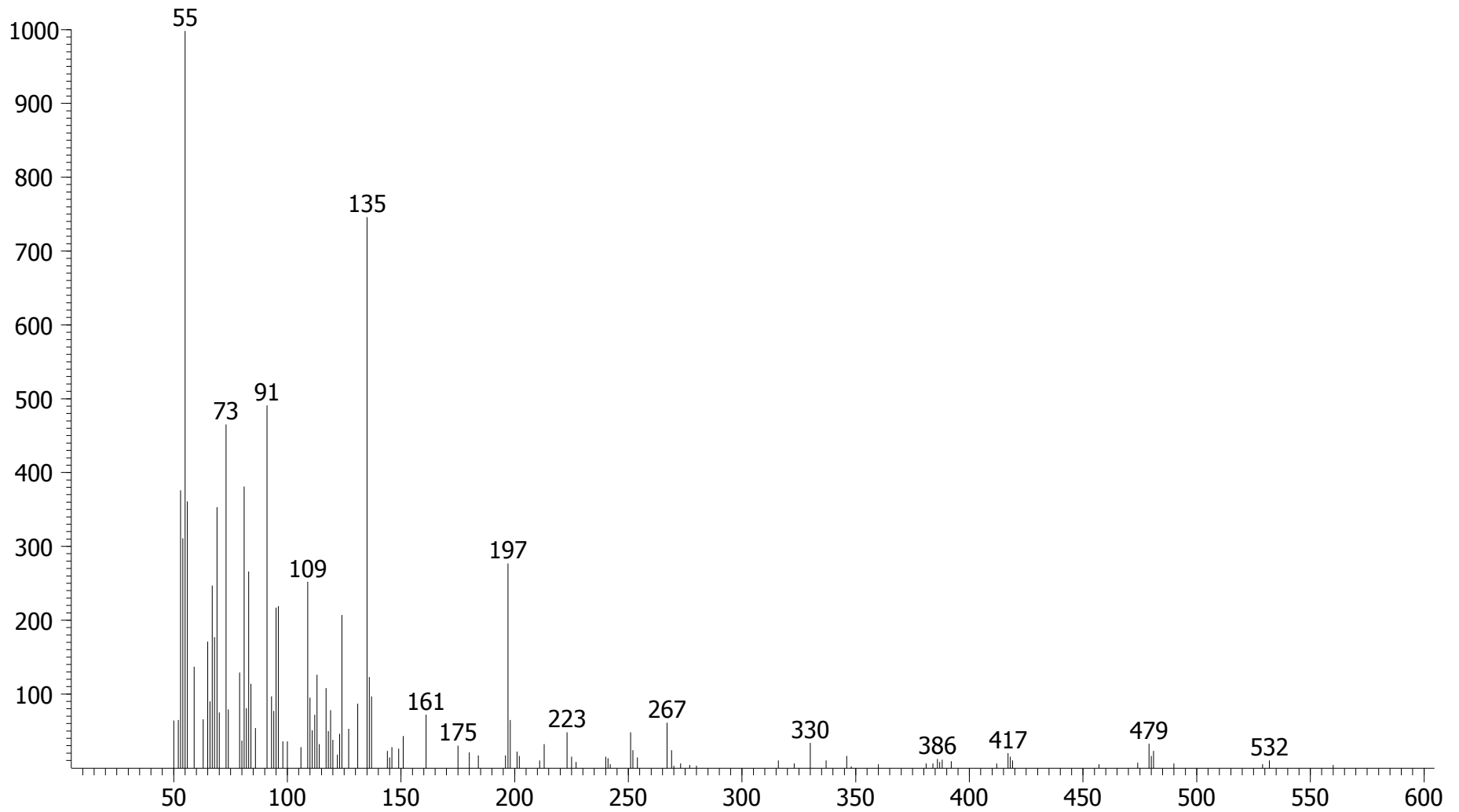
1st Dimension R.T. = 2096.08
2nd Dimension R.T. = 1.604
Quant Mass(es) = 57
S/N = 166.59
Area = 125550
Height = 12010
Similarity = 715

Peak True - sample "AnMbr B (20191120):1", peak 6066, at 2096.08 , 1.604 sec , sec (Spec # 245103)



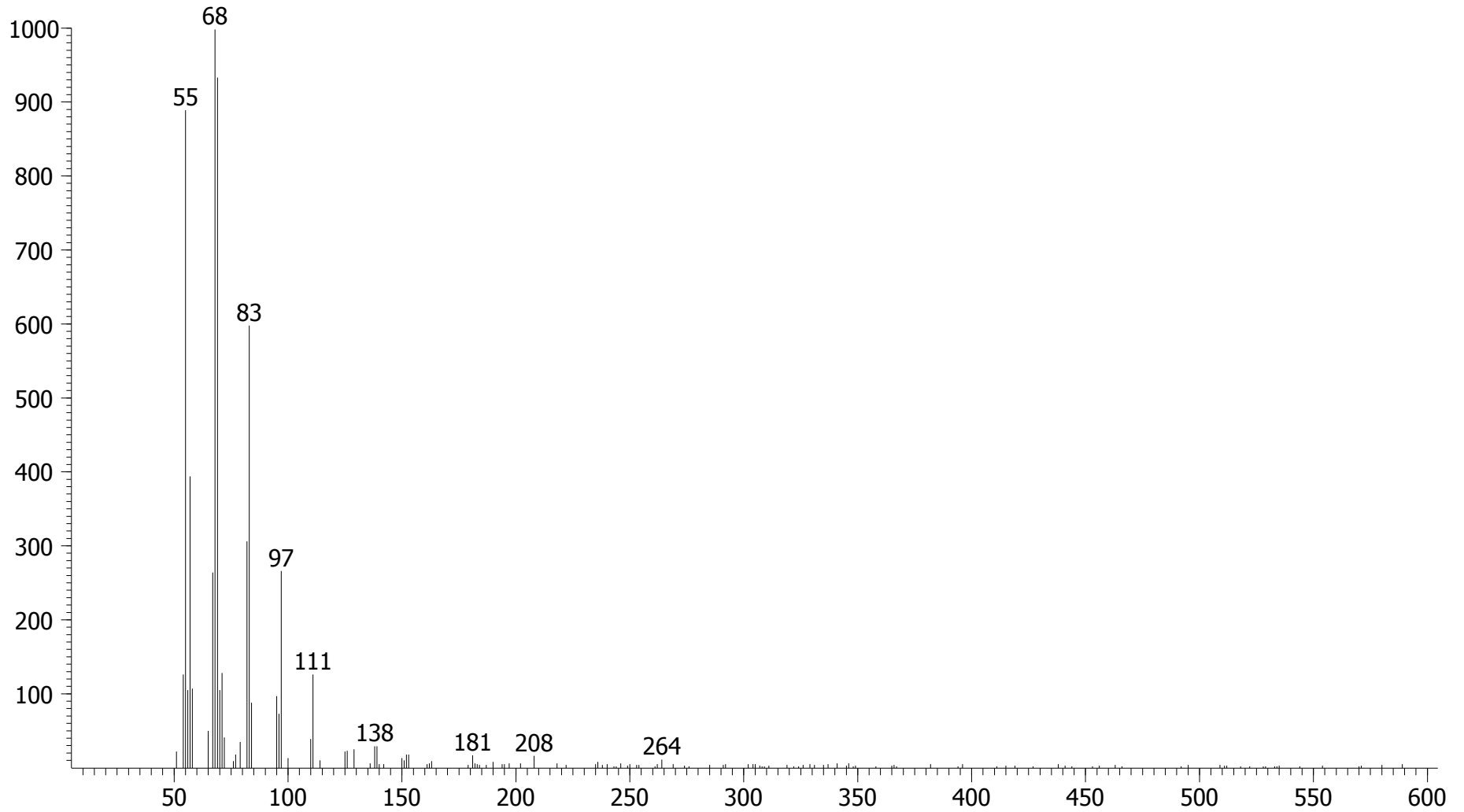
1st Dimension R.T. = 2347.93
2nd Dimension R.T. = 0.904
Quant Mass(es) = 135
S/N = 48.094
Area = 8795.9
Height = 1436.9
Similarity = 611

Peak True - sample "AnMbr B (20191120):1", peak 6508, at 2347.93 , 0.904 sec , sec (Spec # 283157)



1st Dimension R.T. = 2477.36
2nd Dimension R.T. = 1.412
Quant Mass(es) = 68
S/N = 100.35
Area = 37102
Height = 4427.7
Similarity = 917

Peak True - sample "AnMbr B (20191120):1", peak 6720, at 2477.36 , 1.412 sec , sec (Spec # 302844)



1st Dimension R.T. = 3533.75
2nd Dimension R.T. = 0.904
Quant Mass(es) = 403
S/N = 17.864
Area = 1445.1
Height = 239.61
Similarity = 609

Peak True - sample "AnMbr B (20191120):1", peak 7620, at 3533.75 , 0.904 sec , sec (Spec # 462827)

