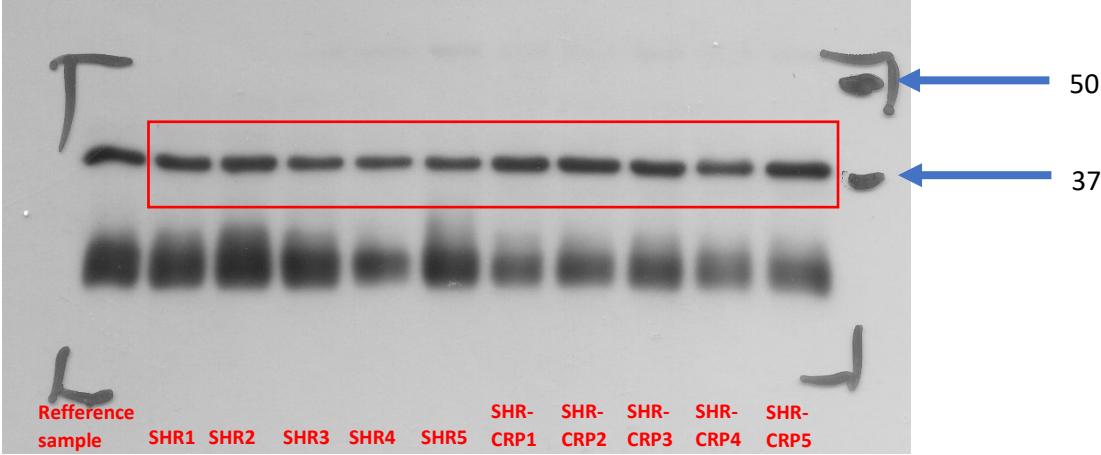


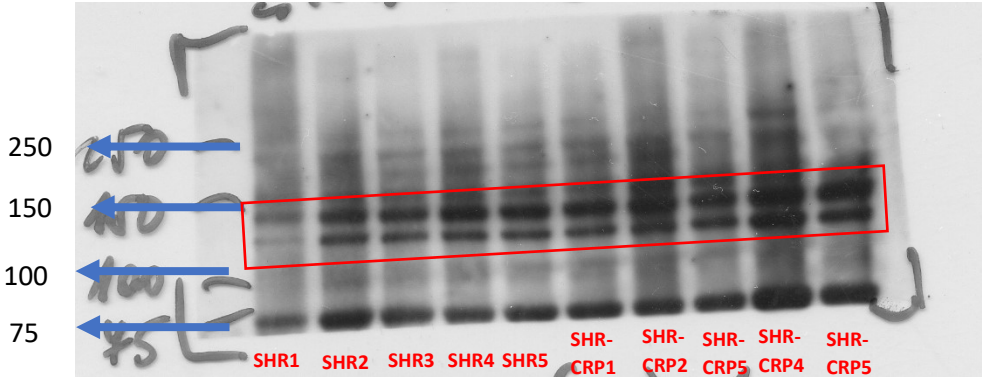
**GAPDH**

Molecular weight: 37kDa



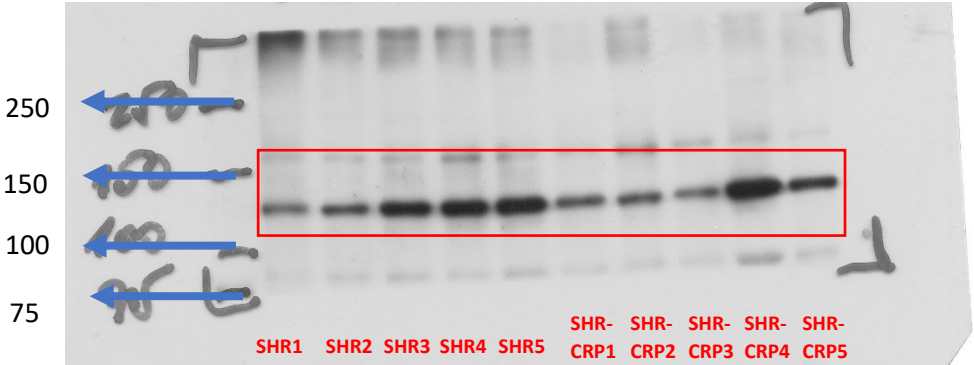
**eNOS**

Molecular weight: approximately 140kDa



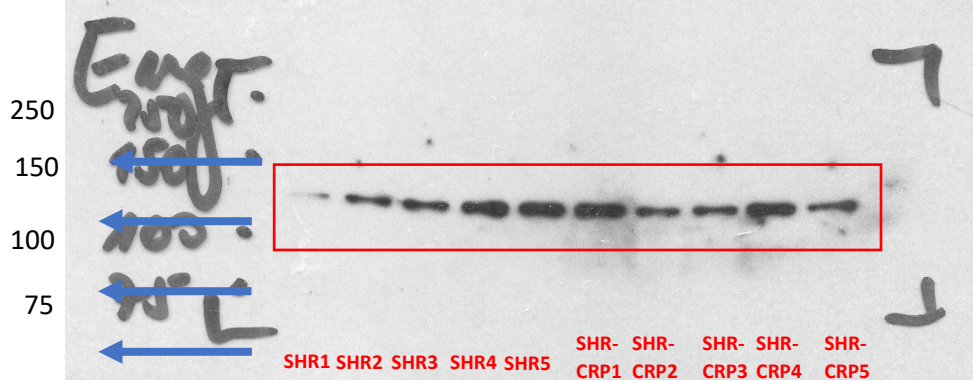
**p-eNOS**

Molecular weight: approximately 140kDa



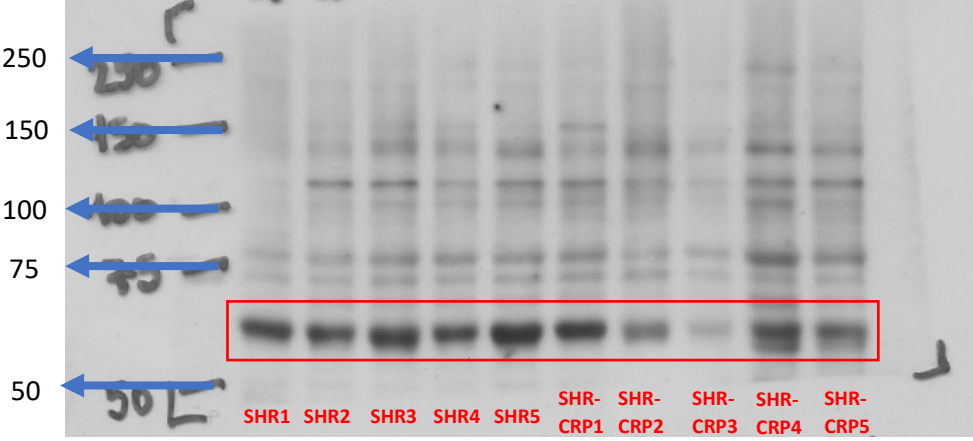
**ENG**

Molecular weight: approximately 95kDa



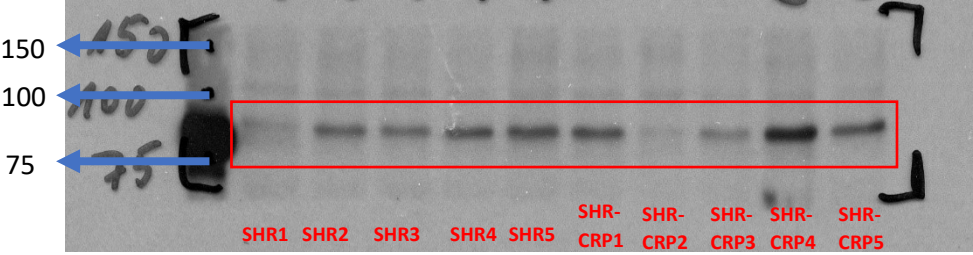
**p-NFkB**

Molecular weight: approximately 70kDa



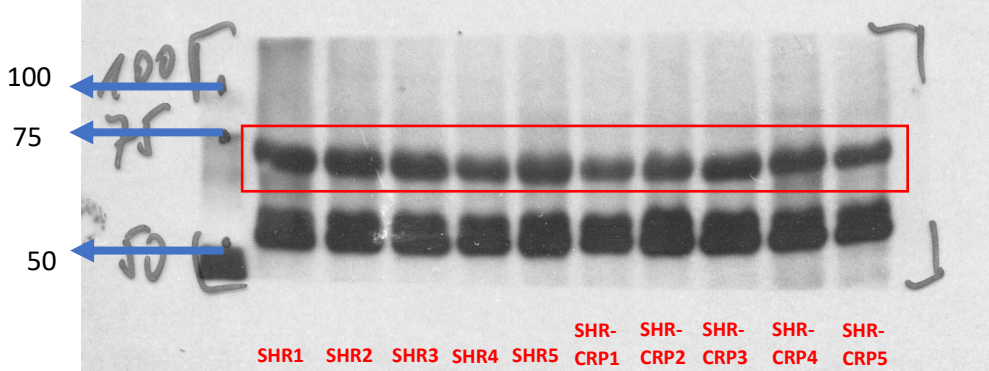
**P-selectin**

Molecular weight: approximately 91kDa



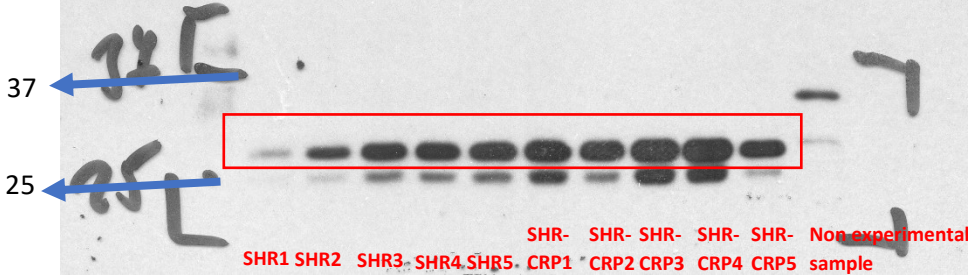
**COX2**

Molecular weight: approximately 70kDa



**HO-1**

Molecular weight: approximately 33kDa



**SOD3**

Molecular weight: approximately 30kDa

