



Hormonal contraception & drug interactions

Alison Edelman, MD, MPH

Professor, Dept. OB/GYN

Director, Family Planning Fellowship

Associate Scientist, Oregon National Primate Research Center

Disclosures

Name	Type of reimbursement	Role	Date
Up to Date, Inc	Yearly Royalties received	Author	Ongoing
Genzyme	Hourly rate payment	Consultant	One time consultant 2/2013
Agile Pharmaceuticals	Honorarium	Advisory Board	One time participant 4/2012
Merck	Honorarium	Trainer	Ongoing
NIH grant funding	Grant support	Co-I	Ongoing
Gates funding	Grant support	Co-I	Completed 1/2015
Society for Family Planning	Grant support	PI	Grant support ongoing
	Honorarium	Author	One time honorarium (3/2013)
CDC	Travel reimbursement	Technical expert	3/2013, 2015 (ongoing)
ACOG	Honorarium received one-time (2012). Reimbursement for 3 meetings per year	Member of Scientific Committee (2011-2014)	Role completed in 2014
Projects in Knowledge	Honorarium	CME faculty	Role completed in 2013
Contemporary Forums	Honorarium and travel reimbursement	CME Faculty. Meeting occurs annually.	Ongoing
Gynuity	honorarium	One time consultant 2/2013	Completed 2/2013
WHO	Travel reimbursement	Member of the MEC steering committee (2013 to present)	Ongoing



61 million US women in childbearing years

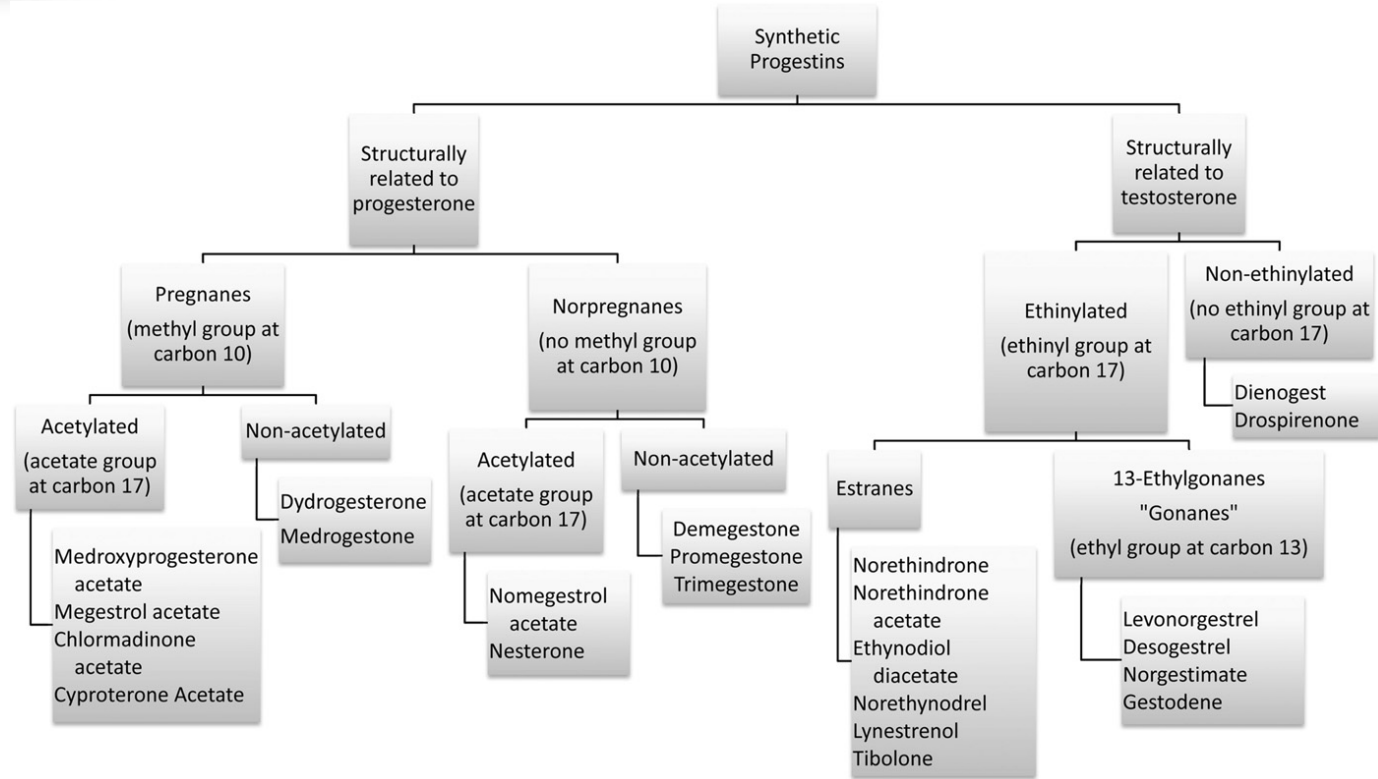
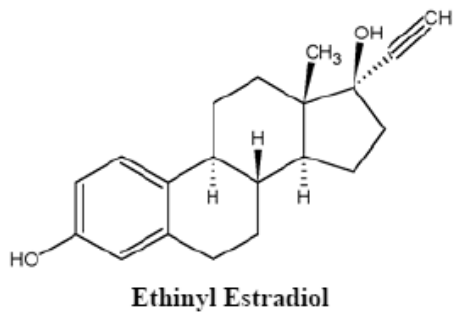


62% using a contraceptive method



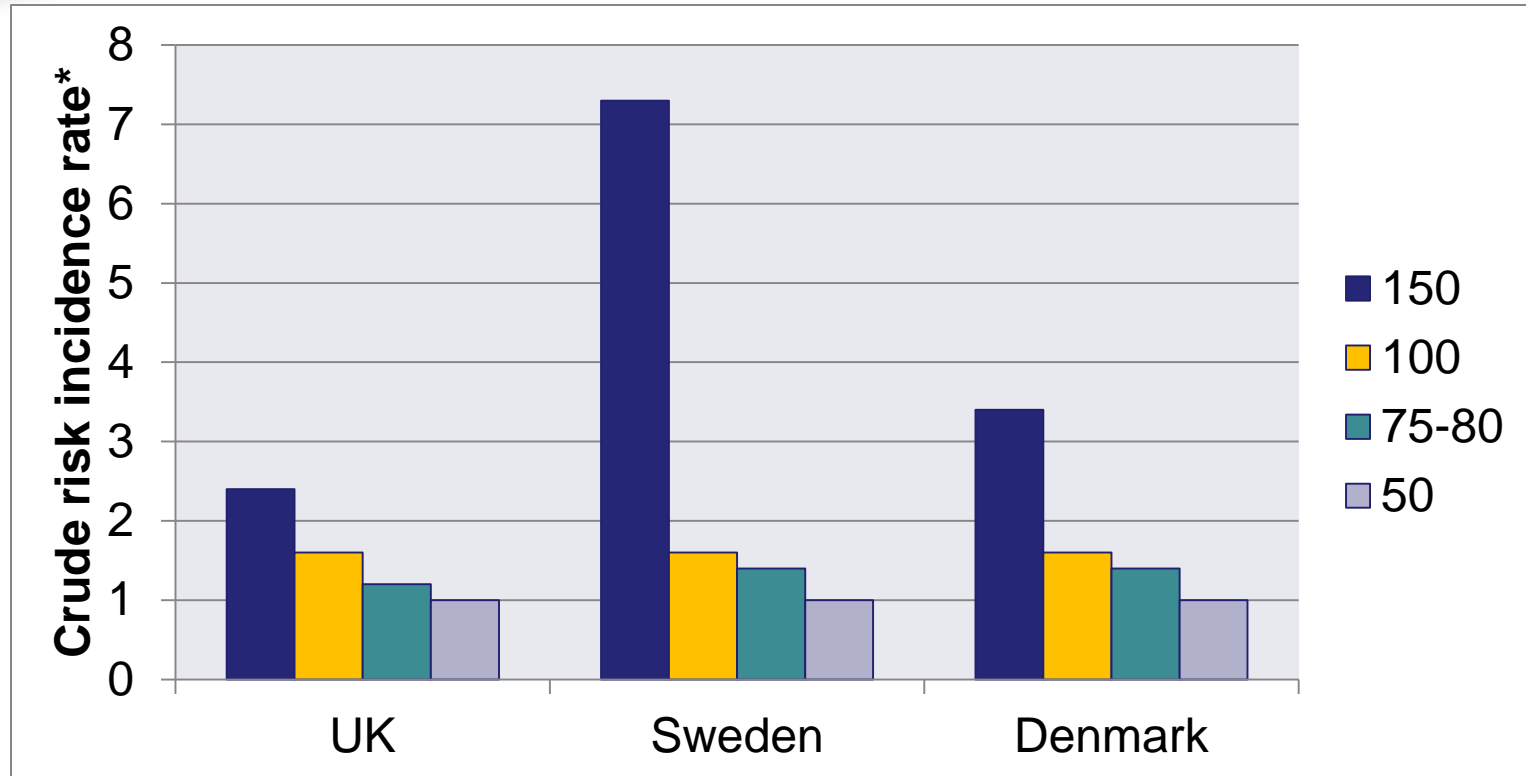
- Pill/ring/patch
- Injectable
- IUD
- Implant
- Permanent (male/female)
- Condoms
- Fertility awareness/withdrawal

Contraceptive steroid hormones



VTE risk is related to estrogen dose

Combined OC users

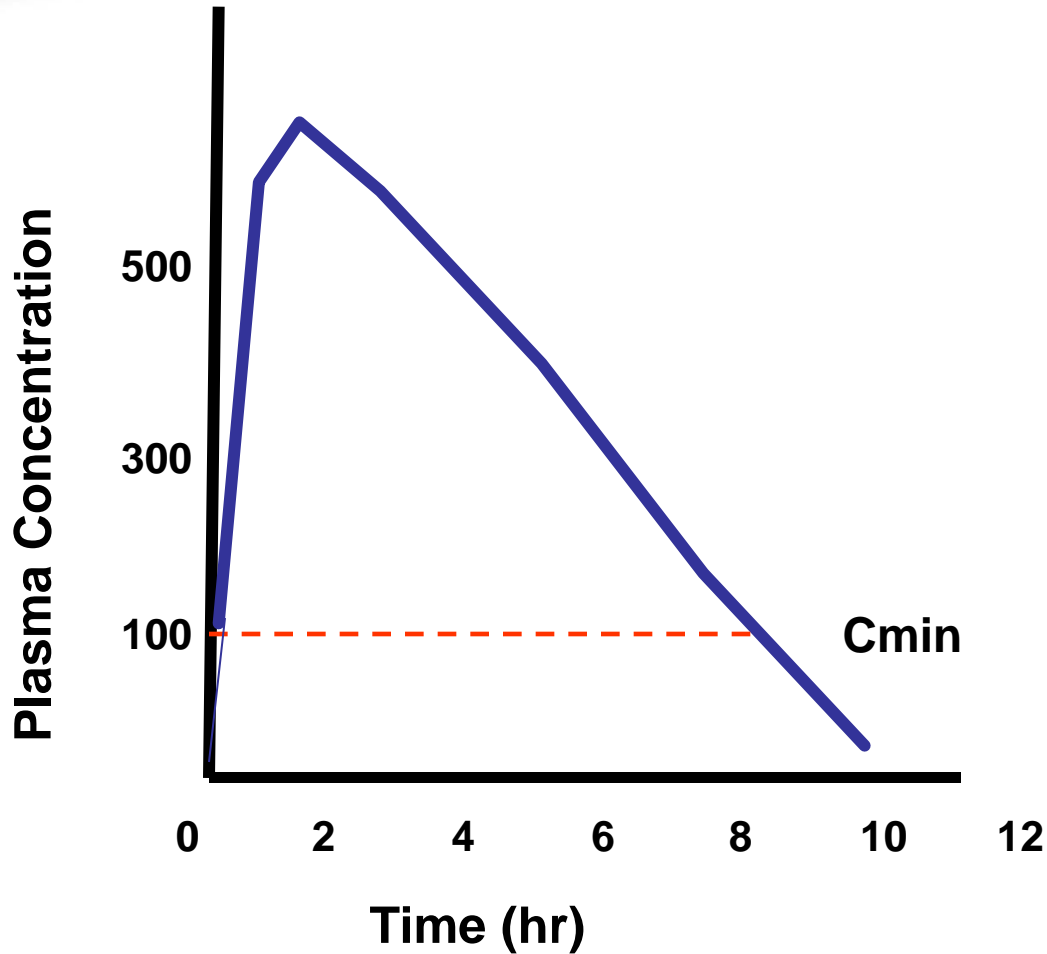


Rate with 50 mcg EE referenced to 1.0



Efficacy x adherence x continuation
Fecundability x coital frequency

Threshold for contraceptive efficacy





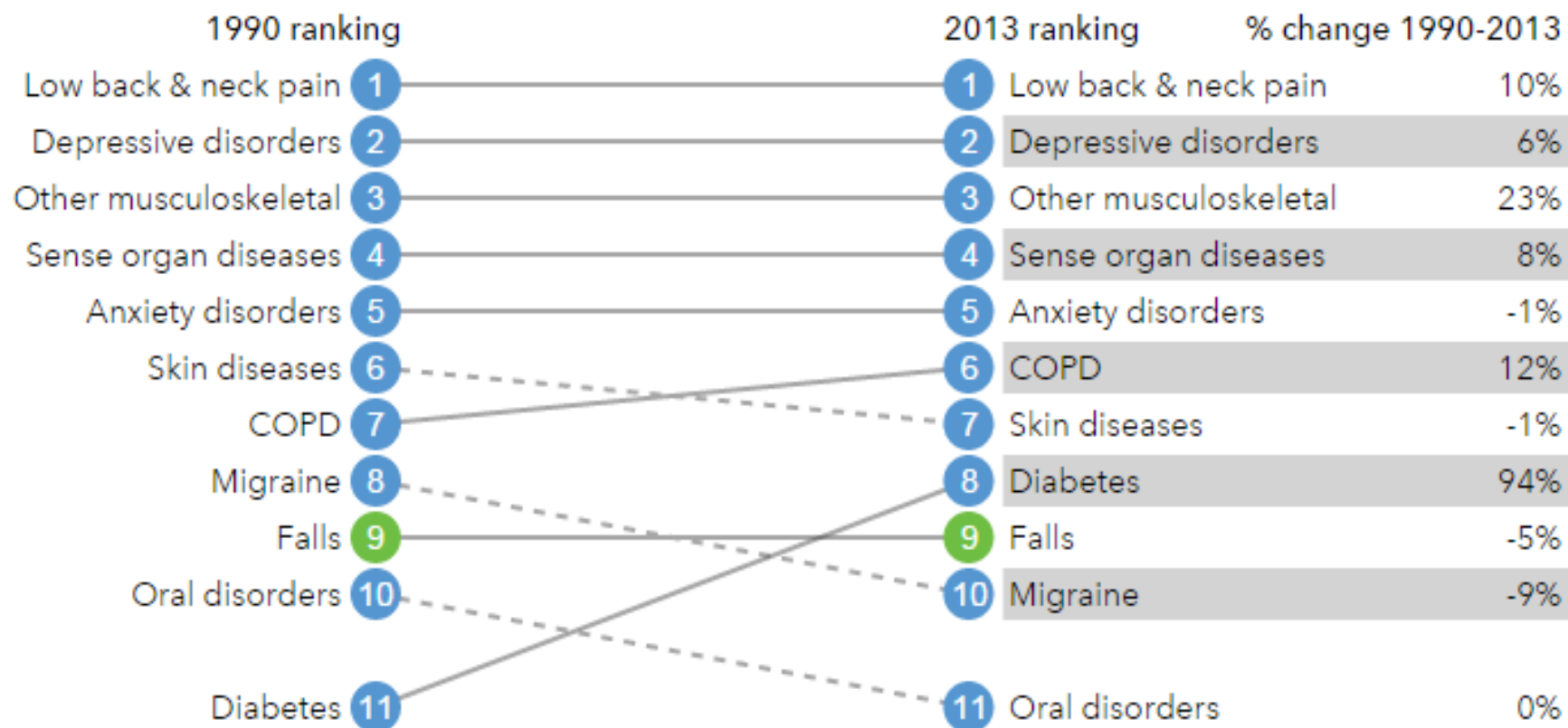
Prescription drug use

	2009-2012 All female persons Rx drug use in past 30 days	
	At least 1 Rx	3 or more Rx
Under 18	23.8%	3.1%
18-44	46.4%	11.8%



LEADING CAUSES OF YLDS, 1990 AND 2013, AND PERCENT CHANGE, 1990-2013

- Communicable, maternal, neonatal, and nutritional diseases
- Non-communicable diseases
- Injuries

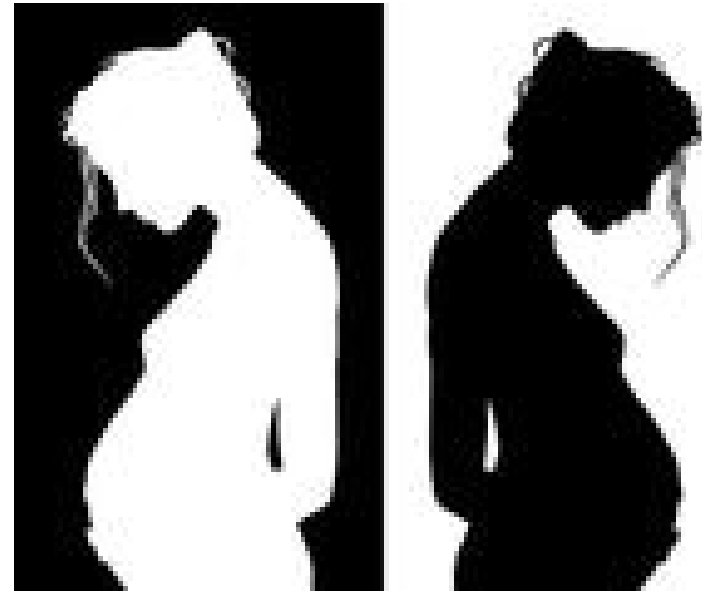


YLDs are years lived in less than ideal health. This includes conditions that may last for only a few days, as well as conditions that can last a lifetime.

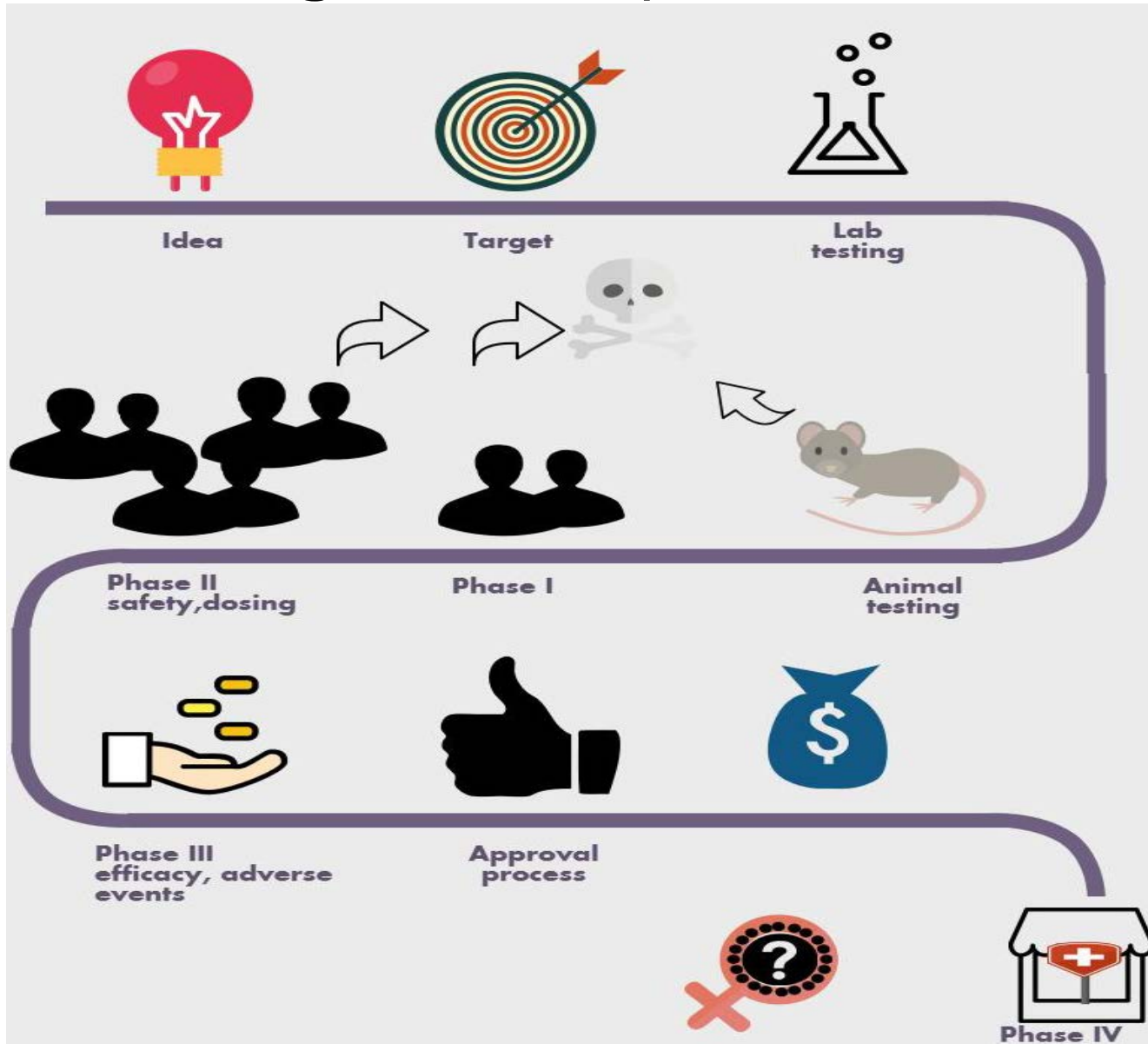
Rankings are based on YLDs per 100,000, all ages, not age-standardized.

Teratogenic drugs

- Isotretinoin
- Warfarin
- Ace Inhibitors
- SSRIs (?)
- Anti-seizure
- Antibiotics



Drug Development



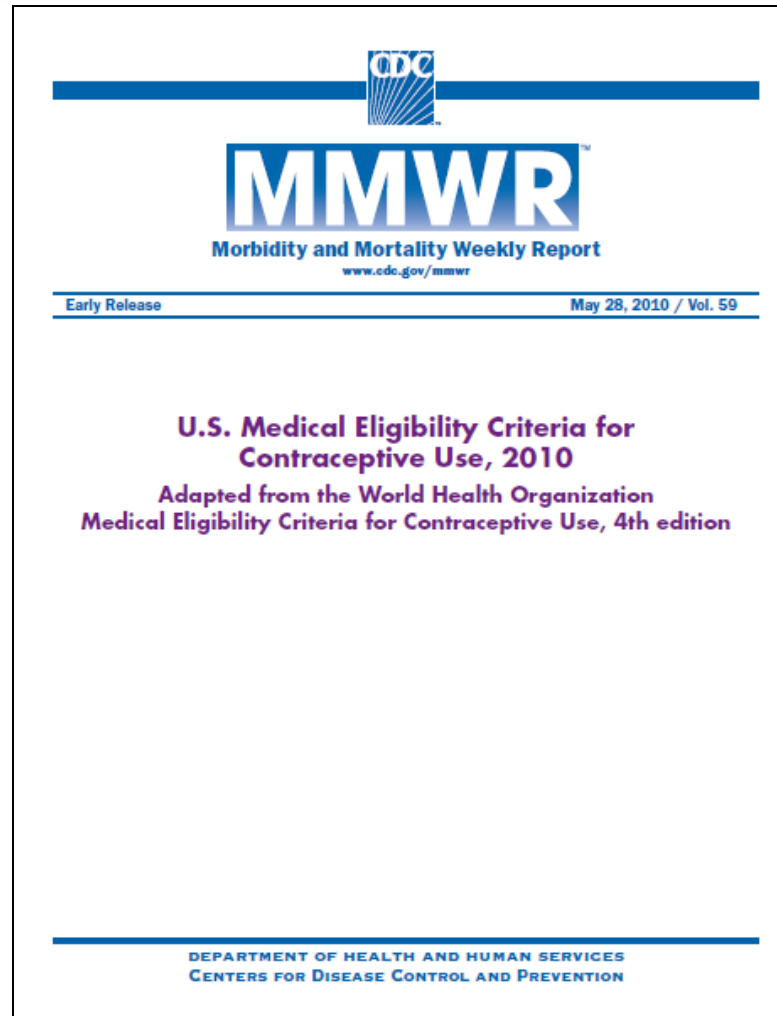


OHSU

OHSU

14 A

Clinical guidance



Contraceptive research at OHSU

Bench to Bedside

- Basic & Translational Research- ONPRC
 - NICHD U54 Contraceptive Development Research Center
 - Established in 2007
 - Oregon Permanent Contraception Research Center (OPERM)
 - Established 2015
 - Gates funded
- Clinical Trials- OHSU
 - NICHD Contraception Clinical Trial Network Research Site
 - Established in 2003
 - Family Planning Fellowship site
 - Established 2001
 - Foundation/Industry-sponsored clinical research

OREGON NATIONAL
PRIMATE RESEARCH
CENTER

Division of Reproductive and
Developmental Sciences



Women's Health Research Unit





Summary

- What types of drugs with hormonal components
- When in development
- How should this
- What level and type
- What are the requirements
- How should this package labeling
- How can we foster ongoing contraceptive development?



needed for interactions
What testing occur?
How should this be tolerated?
What should be tolerated?
How should this be translated in the marketplace?

