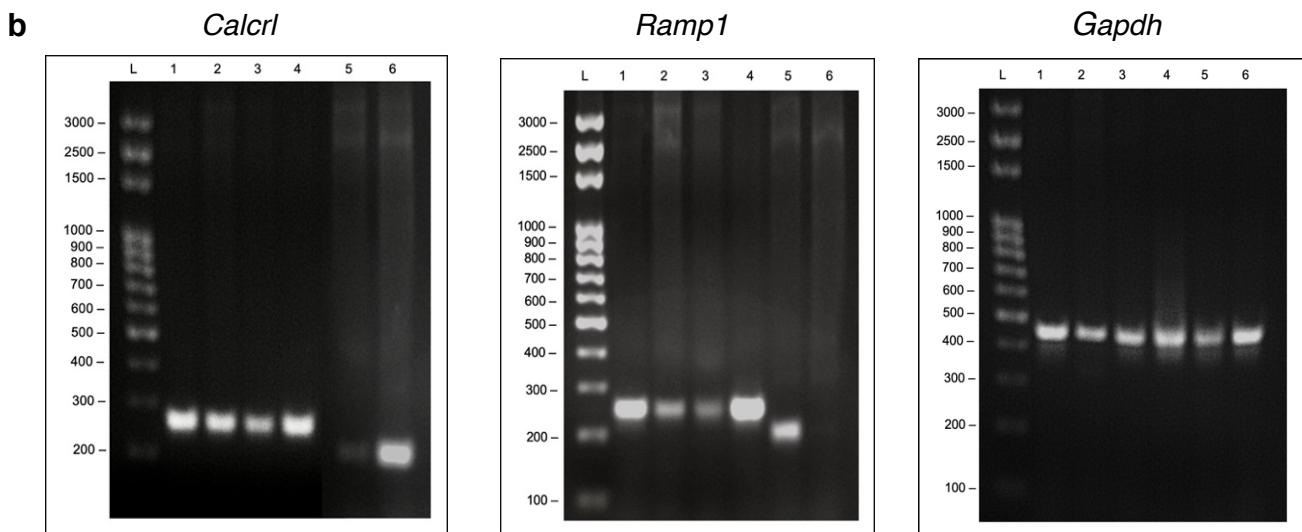
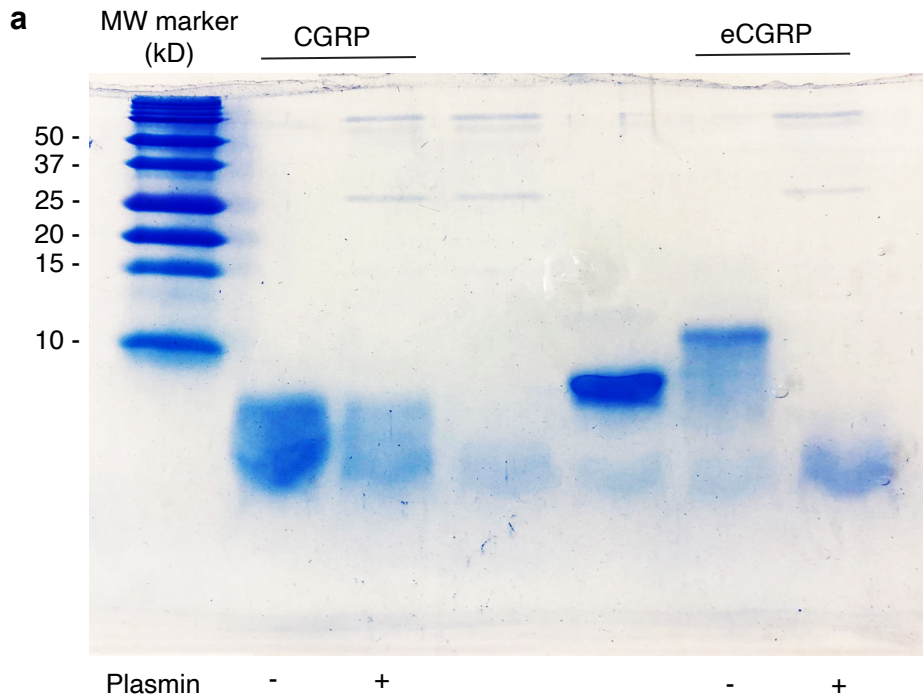

Supplementary information

CGRP sensory neurons promote tissue healing via neutrophils and macrophages

In the format provided by the authors and unedited



- L: Ladder
- Lane 1: Macrophages
- Lane 2: Fibroblasts
- Lane 3: Myoblasts
- Lane 4: Neutrophils
- Lane 5: Keratinocytes
- Lane 6: Endothelial cells