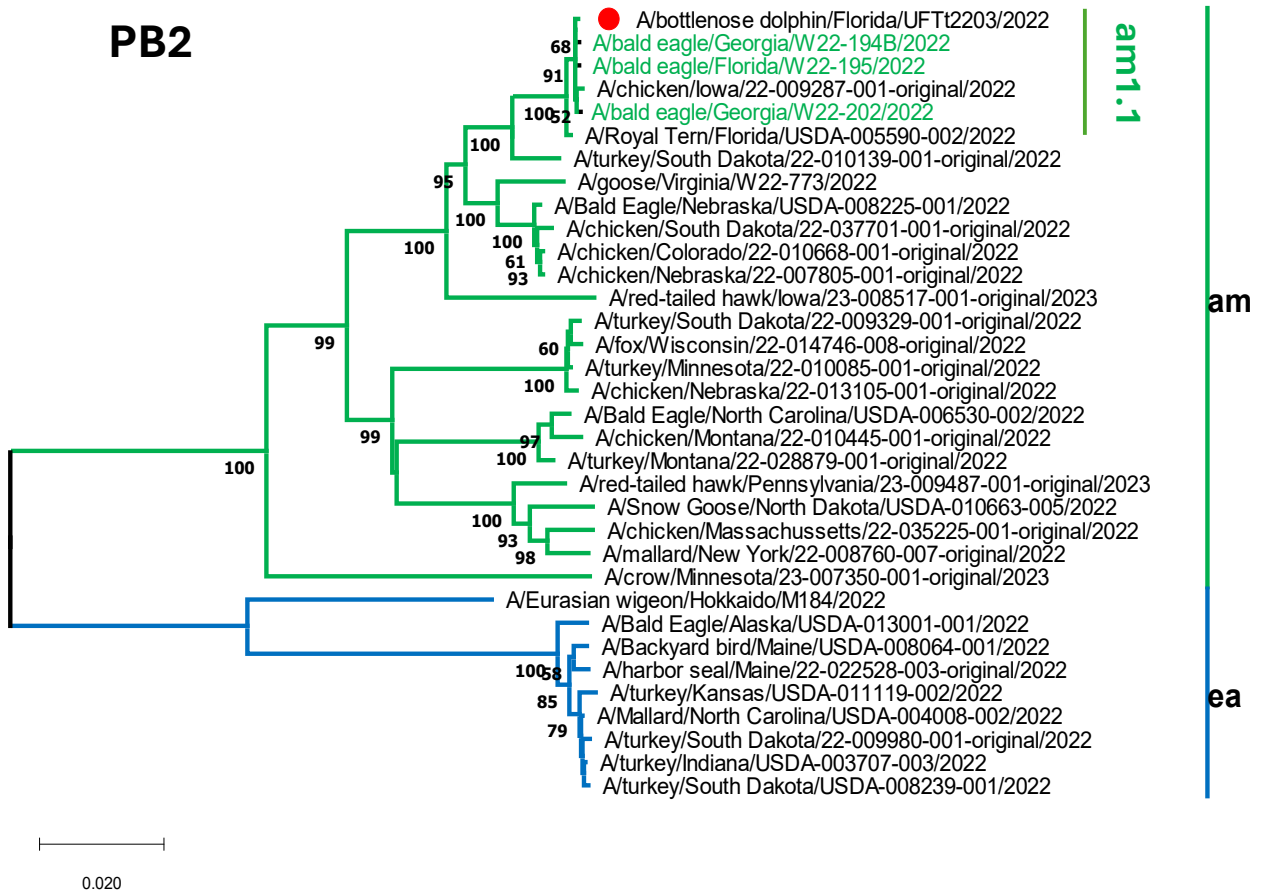
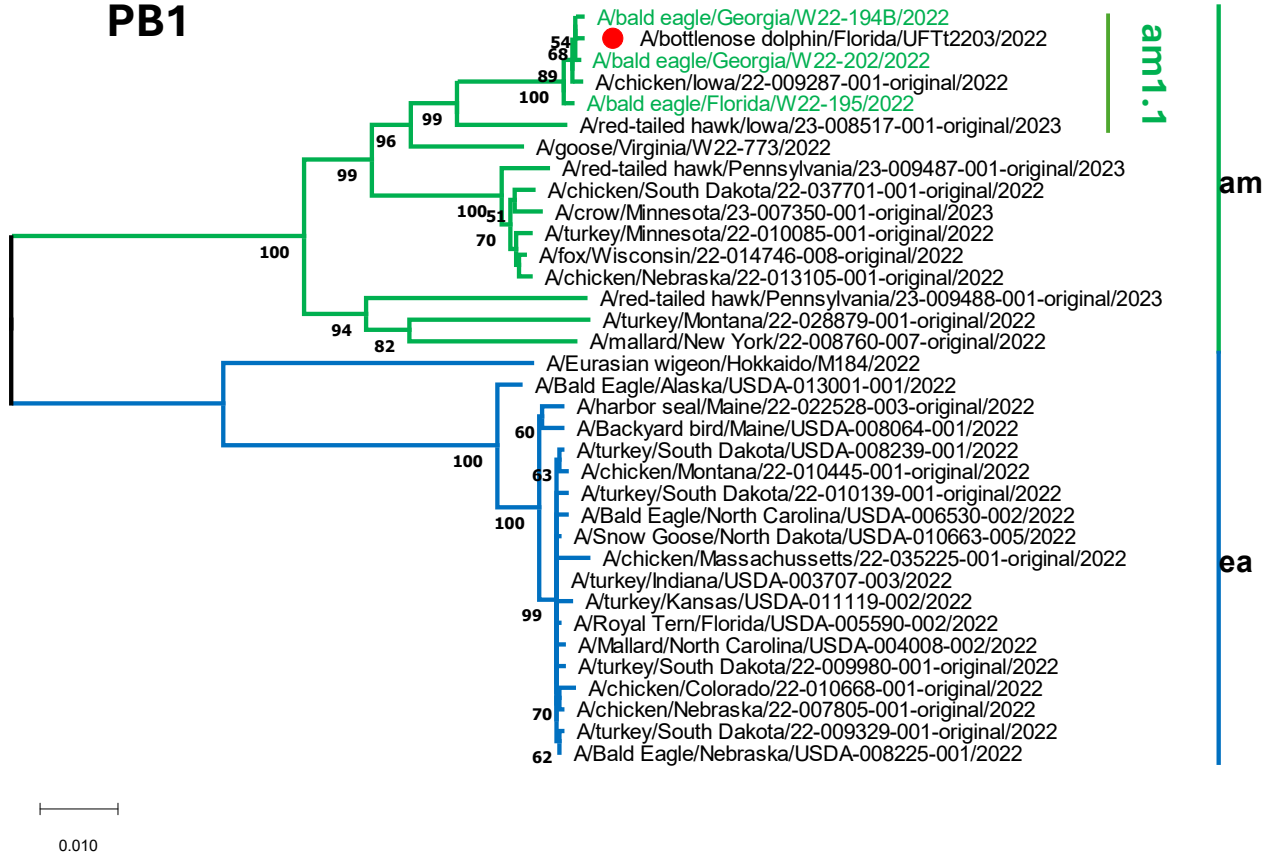


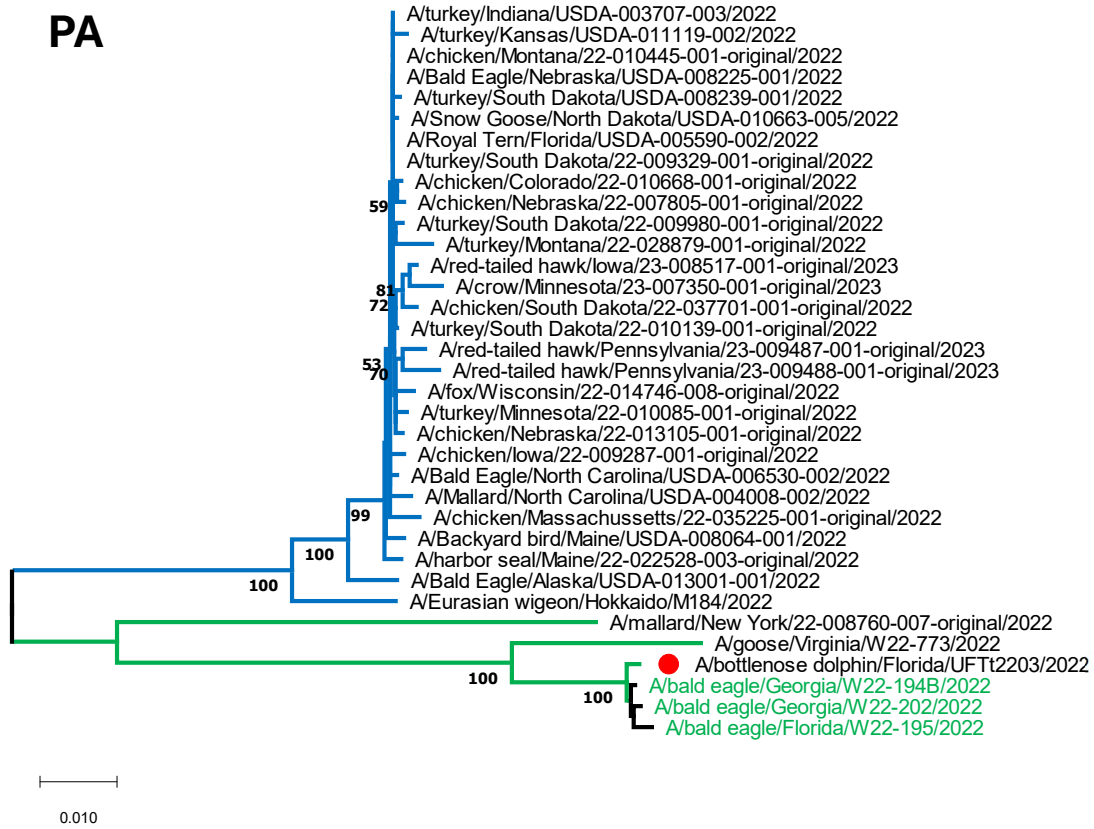
PB2



PB1



PA

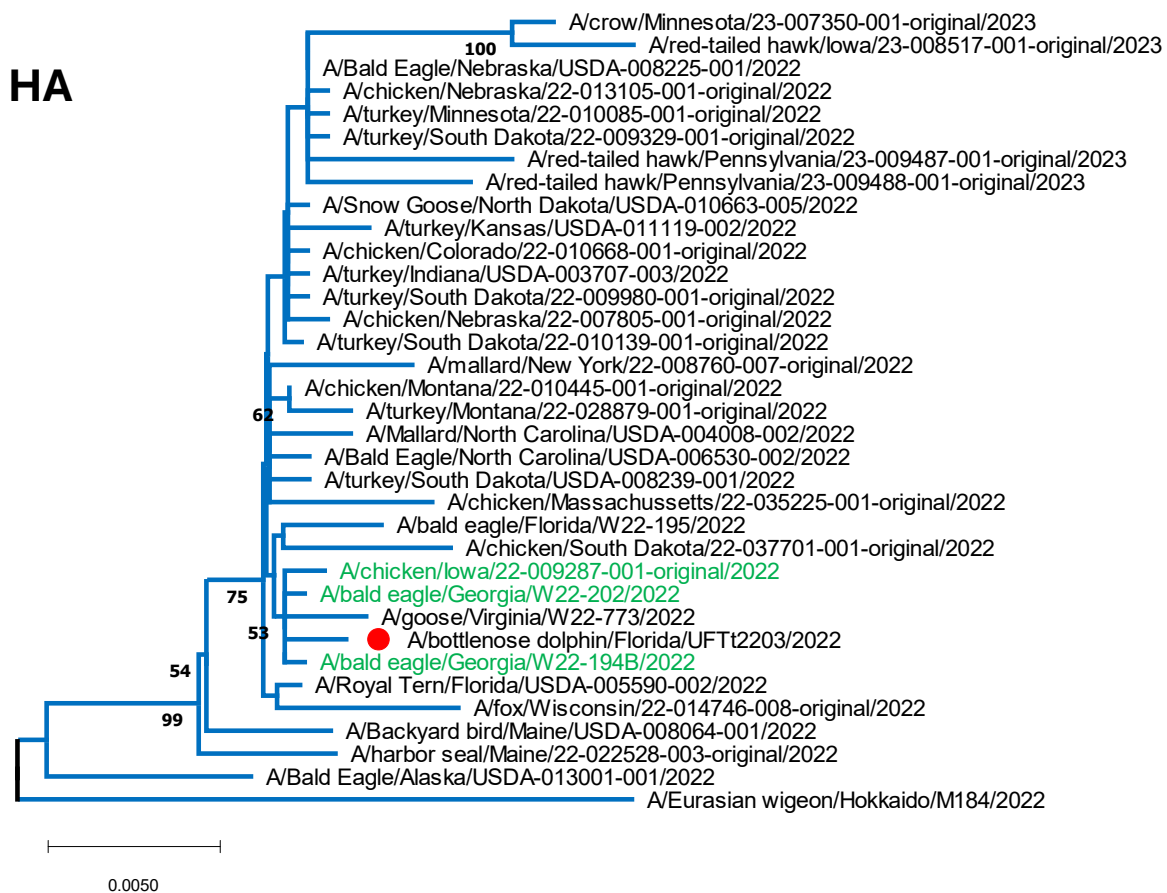


ea

am1

am

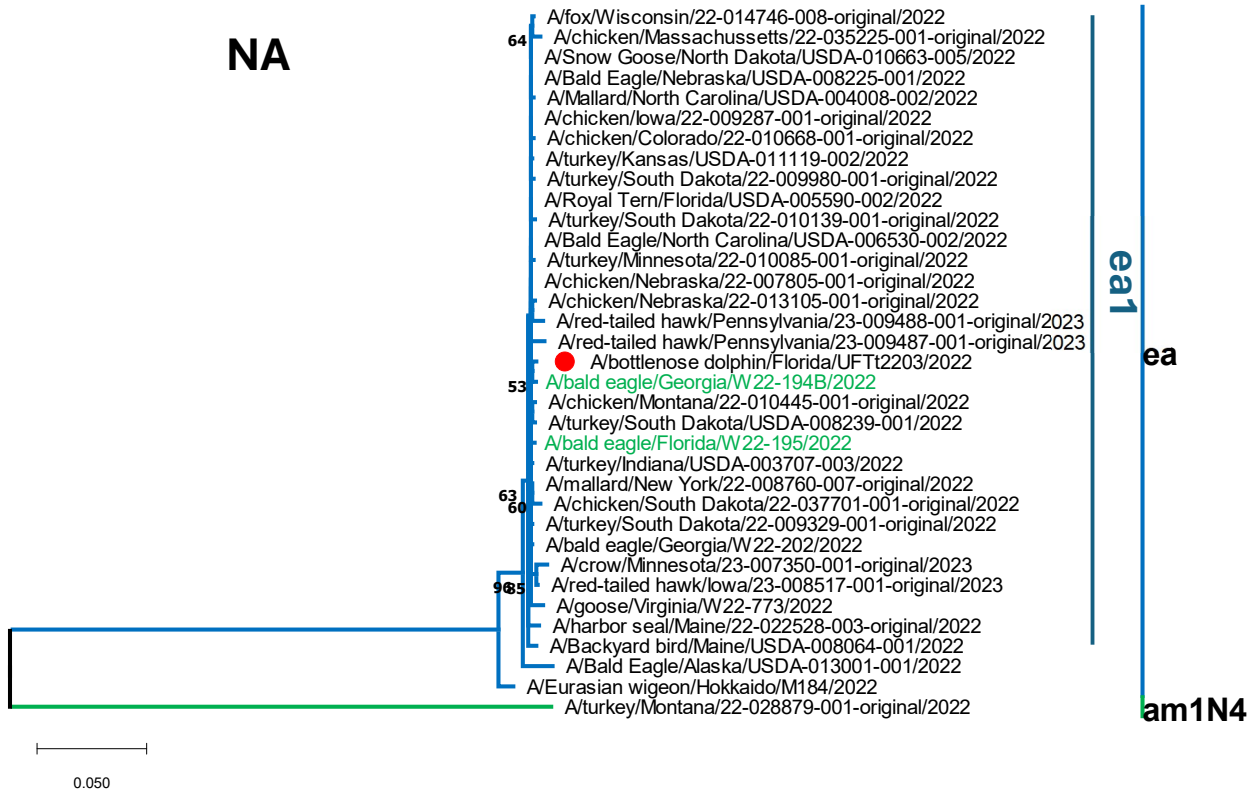
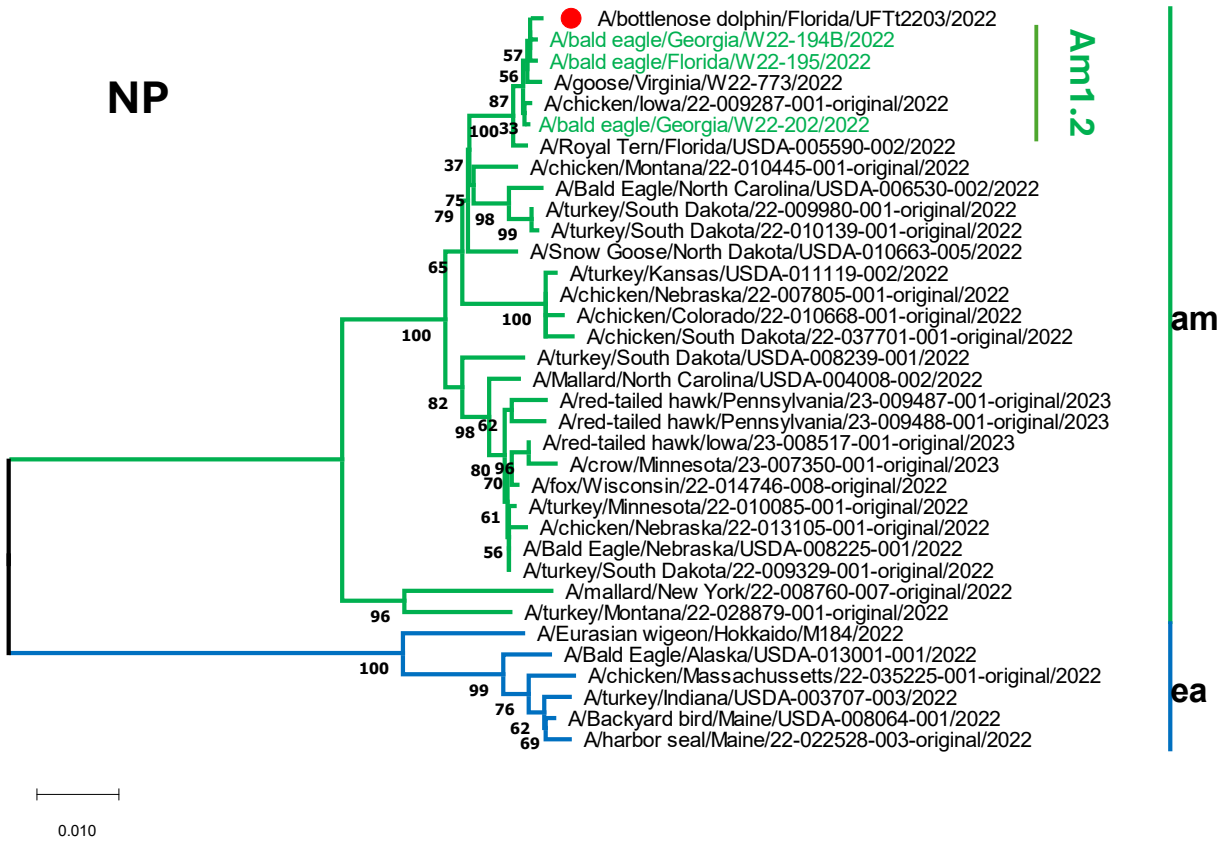
HA



ea1

ea

0.0050



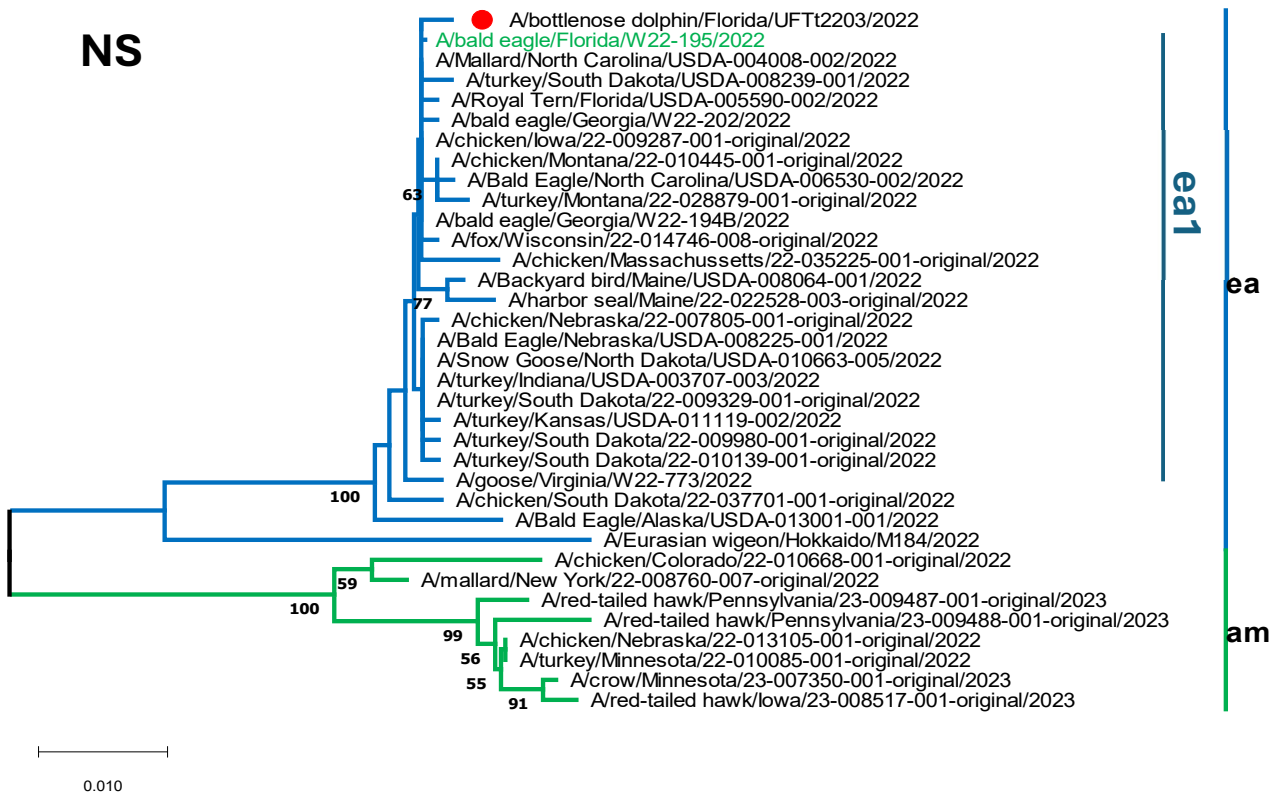
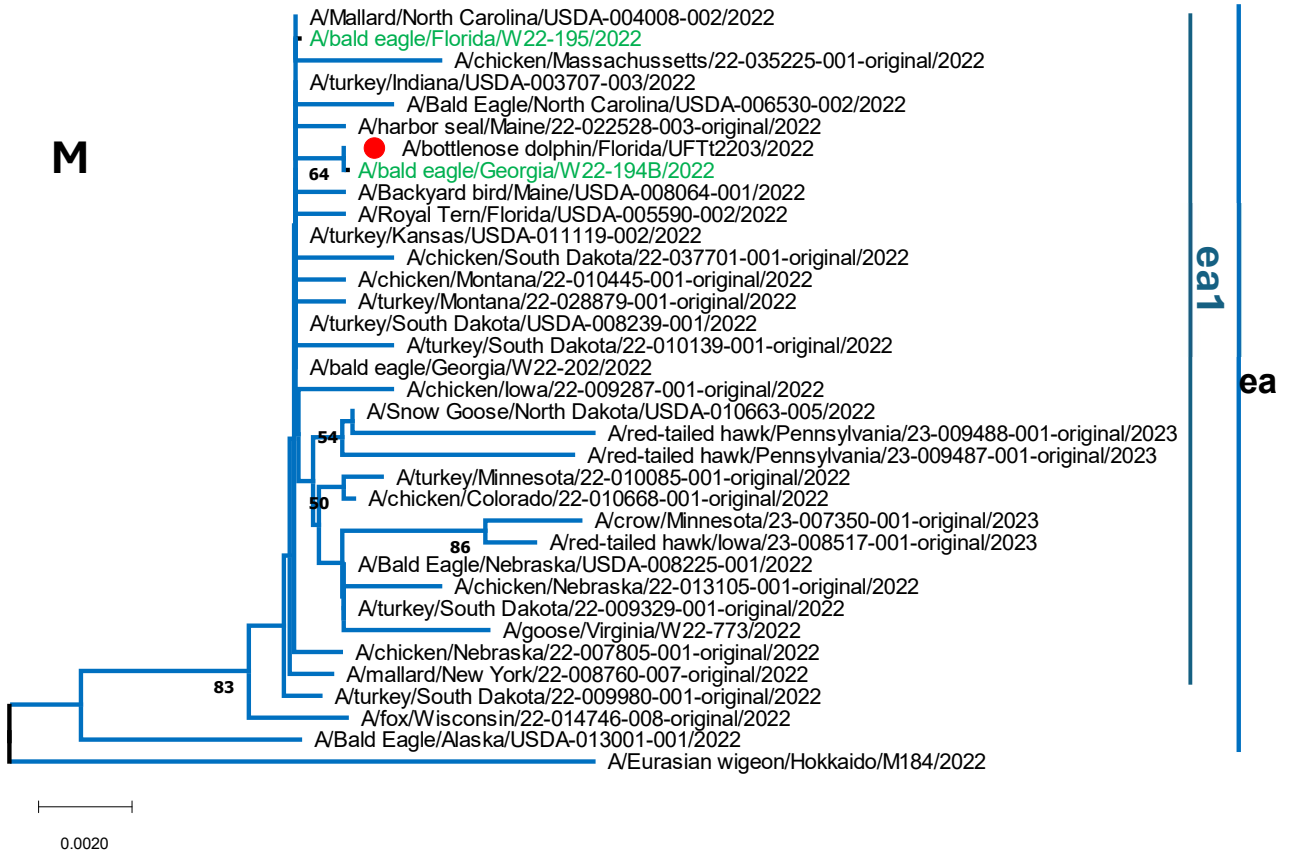


Fig. S1. Phylogenetic trees of eight gene segments of A/bottlenose

dolphin/Florida/UFTt2203/2022 (H5N1). A/bottlenose dolphin/Florida/UFTt2203/2022 is indicated by the red circle and viruses with the highest sequence identity to this virus are in green font. am represents North American gene lineages, colored green; and ea representing Eurasian gene lineage are colored blue. The genetic clade to which A/bottlenose dolphin/Florida/UFTt2203/2022 belongs to is identified to the right. Numbers at nodes represent bootstrap percentages.

Table S1. GISAID Acknowledgement table. All sequences downloaded from GISAID utilized for phylogenetic analysis are represented and ordered by the GISAID Isolate ID number and including strain name, gene segment IDs and sequence authors.

We gratefully acknowledge the authors, originating and submitting laboratories of the sequences from GISAID's EpiFlu™ Database on which this research is based. The list is detailed below.			
Isolate-ID	Isolate name	Segment IDs	Authors
EPI_ISL_18133097	A/Backyard bird/Maine/USDA008064- 001/2022	EPI2709682, EPI2709685, EPI2709688, EPI2709691, EPI2709694, EPI2709697, EPI2709670, EPI2709673	Youk,S., Torchetti,M.K., Lantz,K., Lenoch,J.B., Killian,M.L., Leyson,C., Bevins,S.N., Dilione,K., Ip,H.S., Stallknecht,D.E., Poulson,R.L., Suarez,D.L., Swayne,D.E.; PantinJackwood,M.J.
EPI_ISL_18132957	A/Bald Eagle/Alaska/USDA013001- 001/2022	EPI2708558, EPI2708572, EPI2708545, EPI2708547, EPI2708556, EPI2708565, EPI2708567, EPI2708570	Youk,S., Torchetti,M.K., Lantz,K., Lenoch,J.B., Killian,M.L., Leyson,C., Bevins,S.N., Dilione,K., Ip,H.S., Stallknecht,D.E., Poulson,R.L., Suarez,D.L., Swayne,D.E.; PantinJackwood,M.J.
EPI_ISL_14937070	A/bald eagle/Florida/W22195/2022	EPI2176439, EPI2176440, EPI2176441, EPI2176442, EPI2176443, EPI2176444, EPI2176445, EPI2176446	Poulson,R.; Stallknecht,D.; Rubrum,A.; Jeevan,T.; Walker,D.; Webby,R.
EPI_ISL_14937002	A/bald eagle/Georgia/W22194B/2022	EPI2176424, EPI2176425, EPI2176426, EPI2176427, EPI2176428, EPI2176429, EPI2176430, EPI2176431	Poulson,R.; Stallknecht,D.; Rubrum,A.; Jeevan,T.; Walker,D.; Webby,R.
EPI_ISL_14937071	A/bald eagle/Georgia/W22202/2022	EPI2176449, EPI2176450, EPI2176451, EPI2176452, EPI2176453, EPI2176454, EPI2176447, EPI2176448	Poulson,R.; Stallknecht,D.; Rubrum,A.; Jeevan,T.; Walker,D.; Webby,R.
EPI_ISL_18132909	A/Bald Eagle/Nebraska/USDA008225- 001/2022	EPI2708180, EPI2708182, EPI2708187, EPI2708190, EPI2708194, EPI2708197, EPI2708168, EPI2708172	Youk,S., Torchetti,M.K., Lantz,K., Lenoch,J.B., Killian,M.L., Leyson,C., Bevins,S.N., Dilione,K., Ip,H.S., Stallknecht,D.E., Poulson,R.L., Suarez,D.L., Swayne,D.E.; PantinJackwood,M.J.
EPI_ISL_18132885	A/Bald Eagle/North Carolina/USDA-006530- 002/2022	EPI2707988, EPI2707990, EPI2707994, EPI2707997, EPI2707999, EPI2708004, EPI2707979, EPI2707981	Youk,S., Torchetti,M.K., Lantz,K., Lenoch,J.B., Killian,M.L., Leyson,C., Bevins,S.N., Dilione,K., Ip,H.S., Stallknecht,D.E., Poulson,R.L., Suarez,D.L., Swayne,D.E.; PantinJackwood,M.J.

EPI_ISL_15004062	A/chicken/Colorado/22-010668-001-original/2022	EPI2179297, EPI2179298, EPI2179293, EPI2179294, EPI2179295, EPI2179299, EPI2179300, EPI2179296	Chinh,Thanh;Franzen,Kerrie;Love,Emily;Killian,Mary;Koster,Leo;Lantz,Kristina;Stuber,Tod;Hicks,Jessica
EPI_ISL_12690589	A/chicken/Iowa/22-009287001-original/2022	EPI2035074, EPI2035075, EPI2035078, EPI2035079, EPI2035080, EPI2035076, EPI2035077, EPI2035081	Chinh,Thanh;Franzen,Kerrie;Love,Emily;Killian,Mary;Koster,Leo;Lantz,Kristina;Stuber,Tod;Hicks,Jessica
EPI_ISL_16297079	A/chicken/Massachusetts/22-035225-001-original/2022	EPI2263542, EPI2263543, EPI2263544, EPI2263539, EPI2263540, EPI2263541, EPI2263545, EPI2263546	Chinh,Thanh;Love,Emily;Franzen,Kerrie;Killian,Mary;Koster,Leo;Lantz,Kristina;Stuber,Tod;Hicks,Jessica
EPI_ISL_13434407	A/chicken/Montana/22-010445-001-original/2022	EPI2074910, EPI2074911, EPI2074912, EPI2074913, EPI2074914, EPI2074915, EPI2074916, EPI2074909	Chinh,Thanh;Love,Emily;Franzen,Kerrie;Killian,Mary;Koster,Leo;Lantz,Kristina;Stuber,Tod;Hicks,Jessica
EPI_ISL_11897695	A/chicken/Nebraska/22-007805-001-original/2022	EPI2014121, EPI2014118, EPI2014119, EPI2014120, EPI2014122, EPI2014123, EPI2014124, EPI2014125	Chinh,Thanh;Love,Emily;Franzen,Kerrie;Killian,Mary;Koster,Leo;Lantz,Kristina;Stuber,Tod;Hicks,Jessica
EPI_ISL_16171473	A/chicken/Nebraska/22-013105-001-original/2022	EPI2246420, EPI2246421, EPI2246422, EPI2246417, EPI2246418, EPI2246419, EPI2246423, EPI2246424	Chinh,Thanh;Love,Emily;Franzen,Kerrie;Killian,Mary;Koster,Leo;Lantz,Kristina;Stuber,Tod;Hicks,Jessica
EPI_ISL_16271839	A/chicken/South Dakota/22037701-001-original/2022	EPI2260658, EPI2260659, EPI2260660, EPI2260655, EPI2260656, EPI2260657, EPI2260661, EPI2260662	Chinh,Thanh;Love,Emily;Franzen,Kerrie;Killian,Mary;Koster,Leo;Lantz,Kristina;Stuber,Tod;Hicks,Jessica
EPI_ISL_17964888	A/crow/Minnesota/23-007350-001-original/2023	EPI2613879, EPI2613880, EPI2613881, EPI2613882, EPI2613883, EPI2613884, EPI2613885, EPI2613886	Chinh,Thanh;Franzen,Kerrie;Love,Emily;Ozella,Mikaela;Killian,Mary;Lantz,Kristina;Stuber,Tod;Hicks,Jessica;Norris,Cameron
EPI_ISL_15732766	A/Eurasian wigeon/Hokkaido/M184/2022	EPI2213710, EPI2213711, EPI2213709, EPI2213713, EPI2213706, EPI2213708, EPI2213712, EPI2213707	Yoshihiro,SAKODA; Kohei,OGASAWARA; Norikazu,ISODA; Takahiro,HIONO
EPI_ISL_15078246	A/fox/Wisconsin/22-014746008-original/2022	EPI2182068, EPI2182069, EPI2182064, EPI2182065, EPI2182066, EPI2182067, EPI2182070, EPI2182071	Chinh,Thanh;Love,Emily;Franzen,Kerrie;Killian,Mary;Koster,Leo;Lantz,Kristina;Stuber,Tod;Hicks,Jessica
EPI_ISL_17424653	A/goose/Virginia/W22773/2022	EPI2507060, EPI2507061, EPI2507065, EPI2507063, EPI2507057, EPI2507059, EPI2507062, EPI2507064	Poulson,R.; Stallknecht,D.; Rubrum,A.; Jeevan,T.; Walker,D.; Webby,R.

EPI_ISL_16632539	A/harbor seal/Maine/22-022528-003-original/2022	EPI2310413, EPI2310414, EPI2310415, EPI2310416,	Chinh,Thanh; Franzen,Kerrie; Love,Emily; Killian,Mary; Lantz,Kristina; Hicks,Jessica; Norris, Cameron;
		EPI2310419, EPI2310420, EPI2310417, EPI2310418	Stuber,Tod; Sawatzki, Kaitlin; Puryear, Wendy; Foss, Alexa; Doughty,Linda; Runstadler, Jonathan