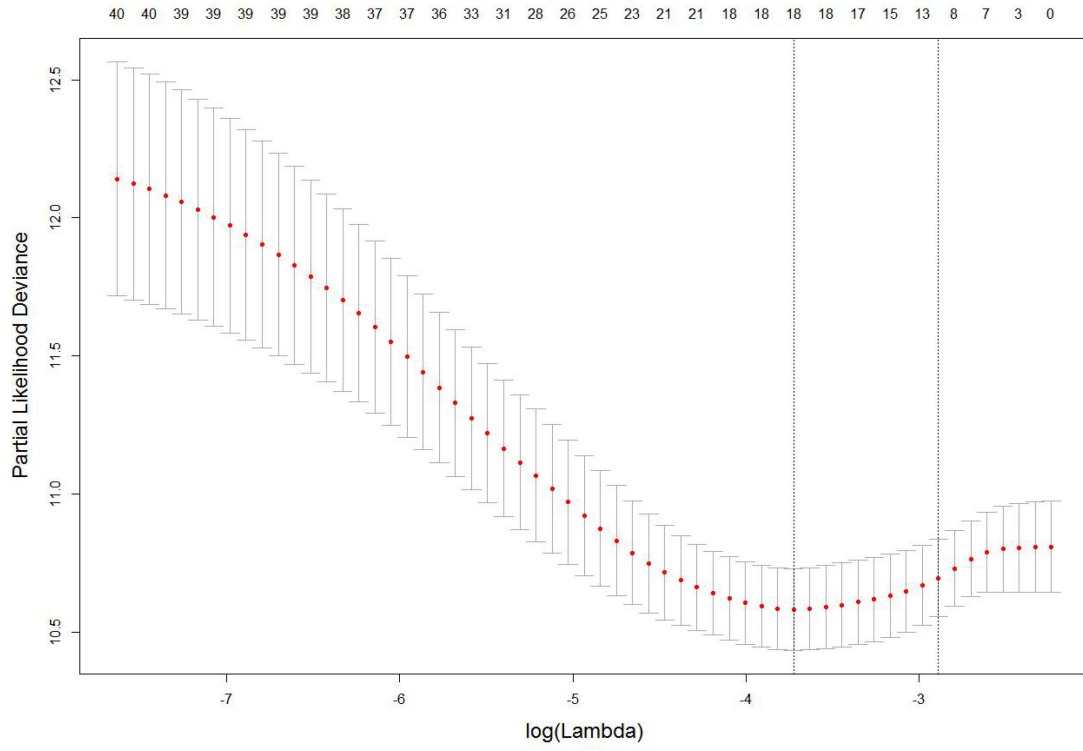
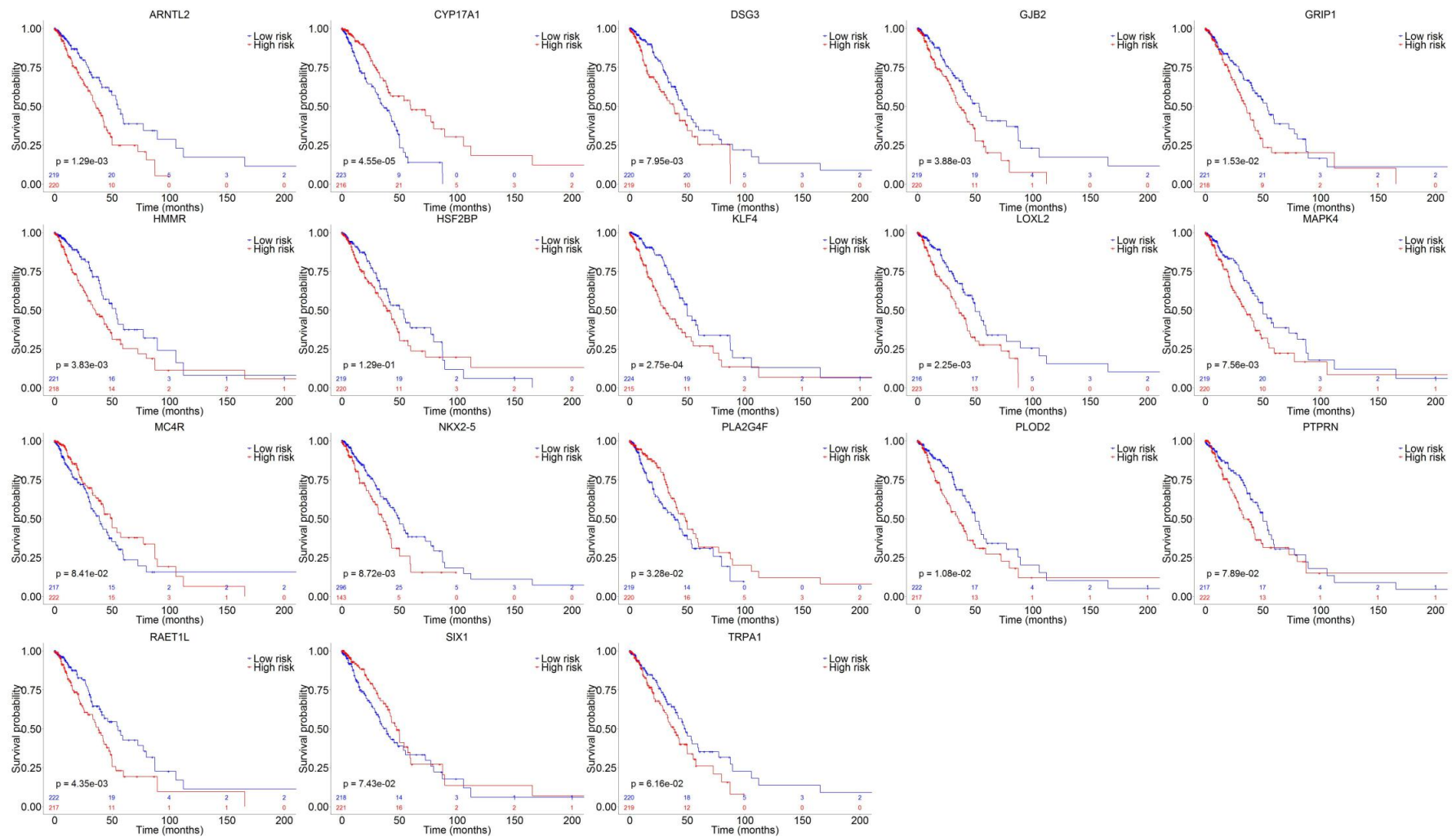


A gene expression based immune signature for lung adenocarcinoma prognosis

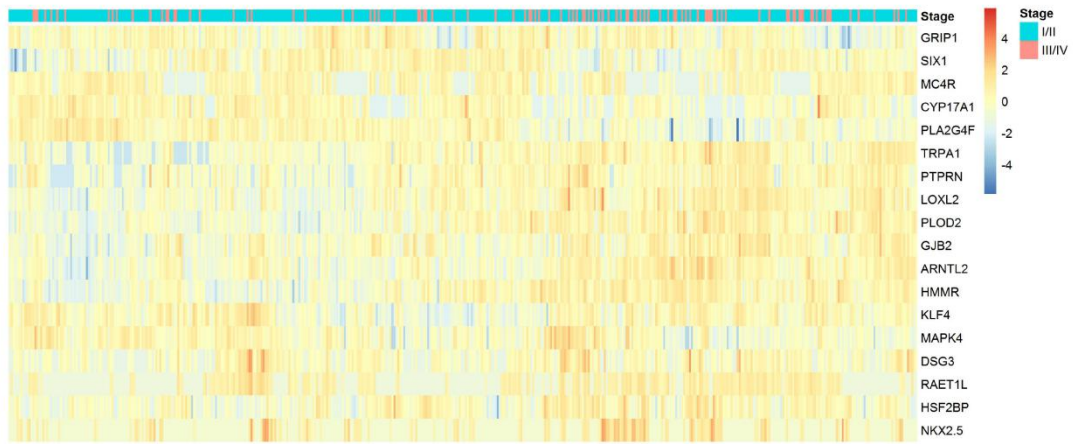
Supplementary Figures



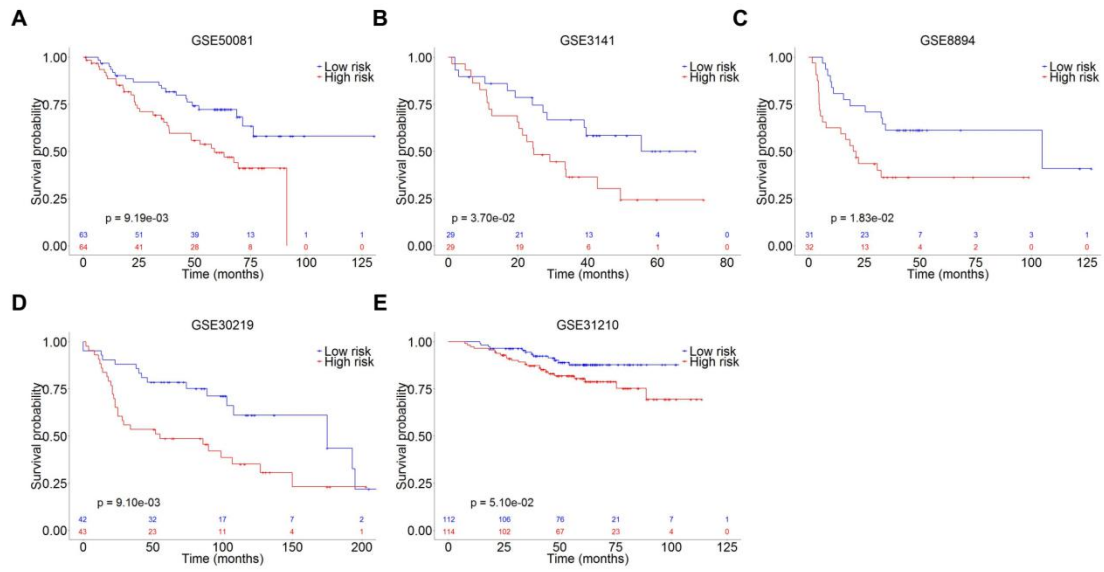
Supplementary Figure 1. 18 prognosis markers selected by the LASSO variable selection model.



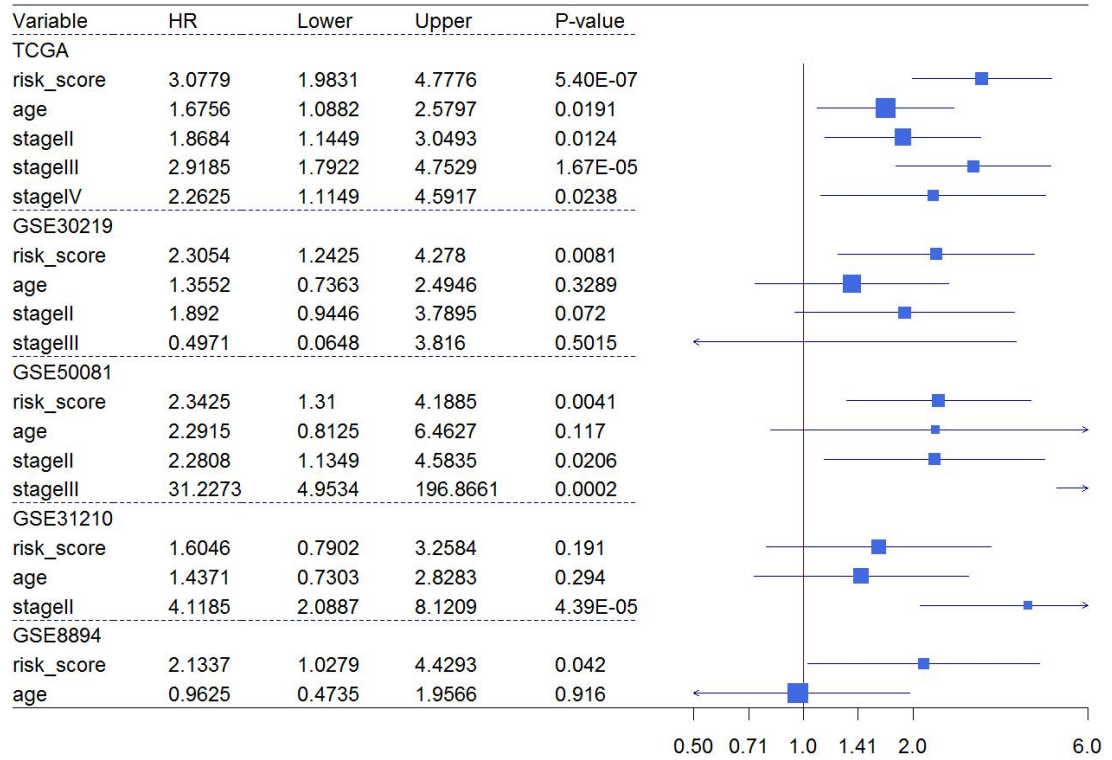
Supplementary Figure 2. Kaplan-Meier plot of 18 biomarkers in LUAD patients from TCGA database.



Supplementary Figure 3. Heatmap showing gene expression of 18 biomarkers in early and late tumor stages among LUAD patients.



Supplementary Figure 4. Kaplan-Meier plot of high-risk and low-risk patients from validation studies. Datasets includes (A) GSE50081, (B) GSE3141, (C) GSE8894, (D) GSE30219 and (E) GSE31210.



Supplementary Figure 5. Multivariate Cox analysis was used to evaluate the predictive value of the identified immune signature in TCGA cohort and independent validation datasets. The clinical variables including age and tumor stage were adjusted when they are available in each dataset.