

Supplementary data

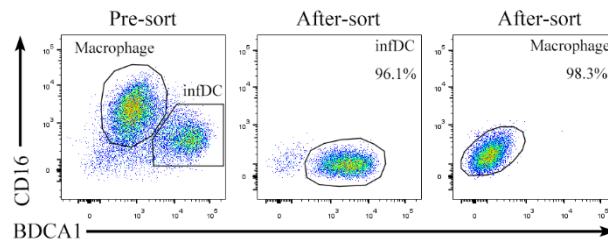


Fig S1. Purity of infDCs and macrophages sorted by flow cytometry. Light density cells from malignant pleural effusions were labeled with anti-HLA-DR, CD11c, CD16, CD1c antibodies and sorted by flow cytometry, and then the purity of these cells was detected.

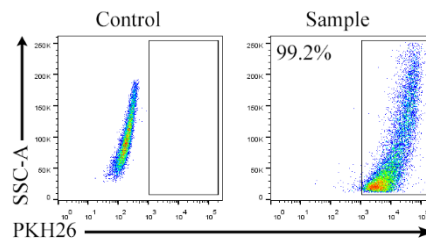


Fig S2. HCC827 cells stained with PKH26 red fluorescence. HCC827 cells were obtained, stained with PKH26 and analyzed by flow cytometry.

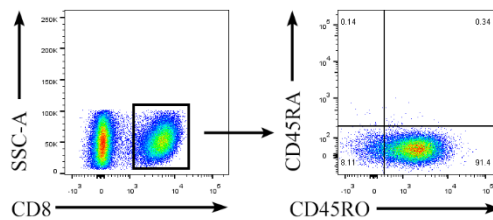


Fig S3. CD8⁺ T cells from malignant pleural effusions. Light density cells from malignant pleural effusions of NSCLC patients were stained with anti-CD8, CD45RA, and CD45RO antibodies and analyzed by flow cytometry. One representative experiment out of 3 is shown.