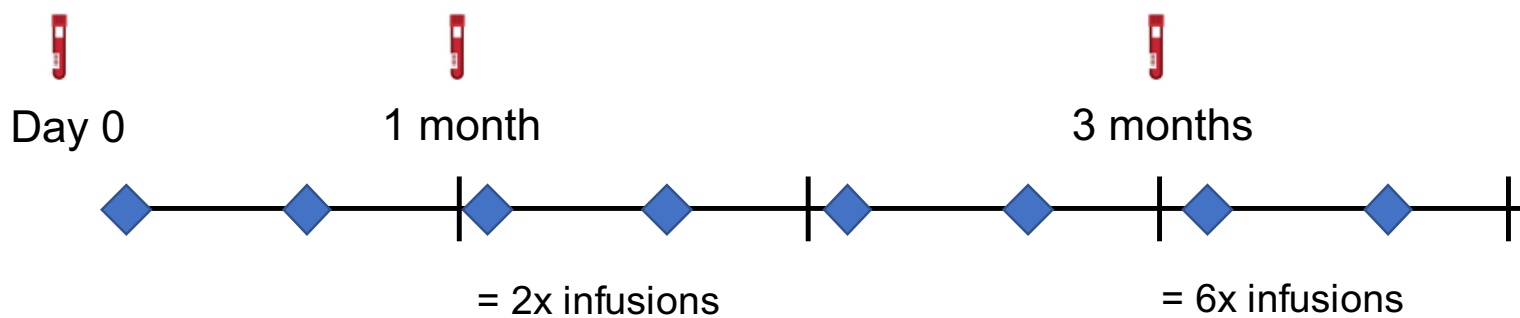
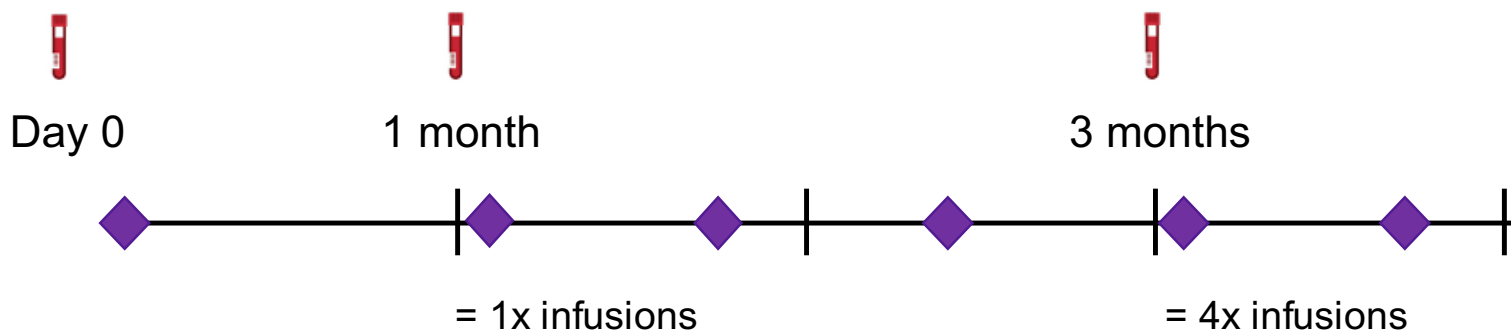


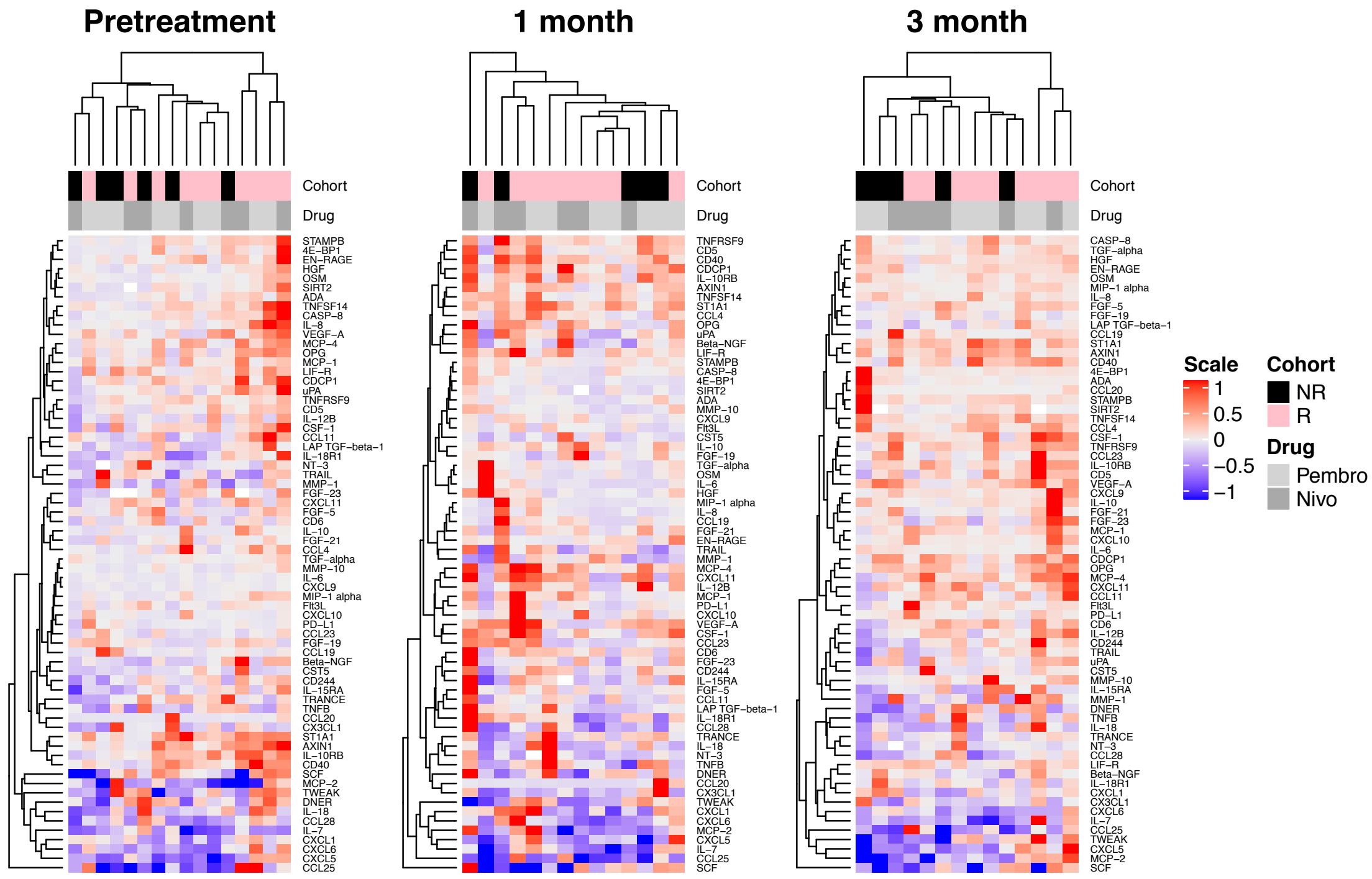
Nivolumab



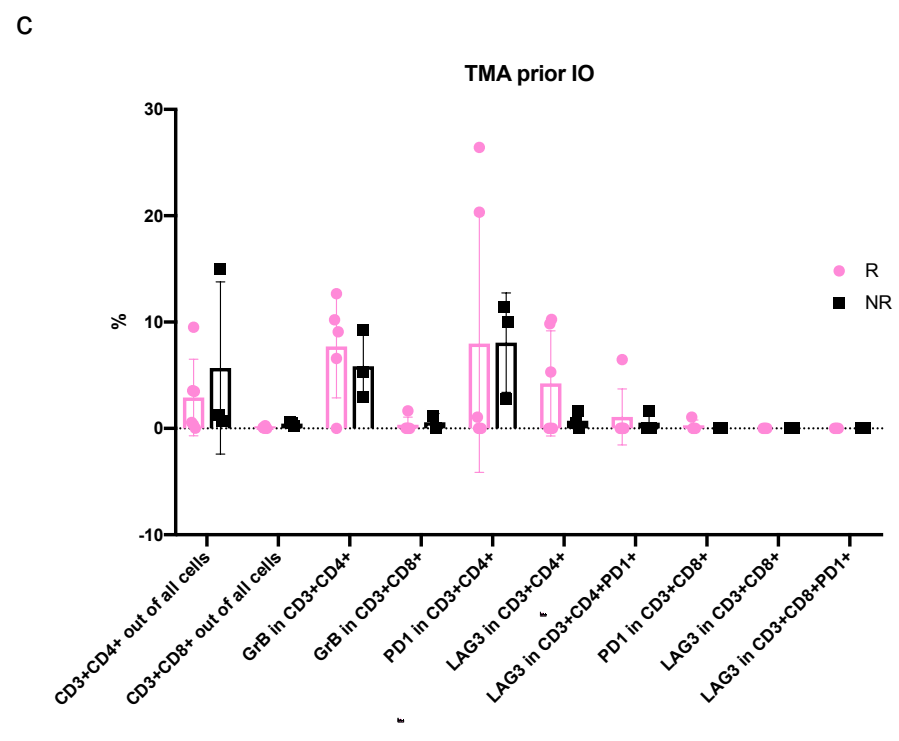
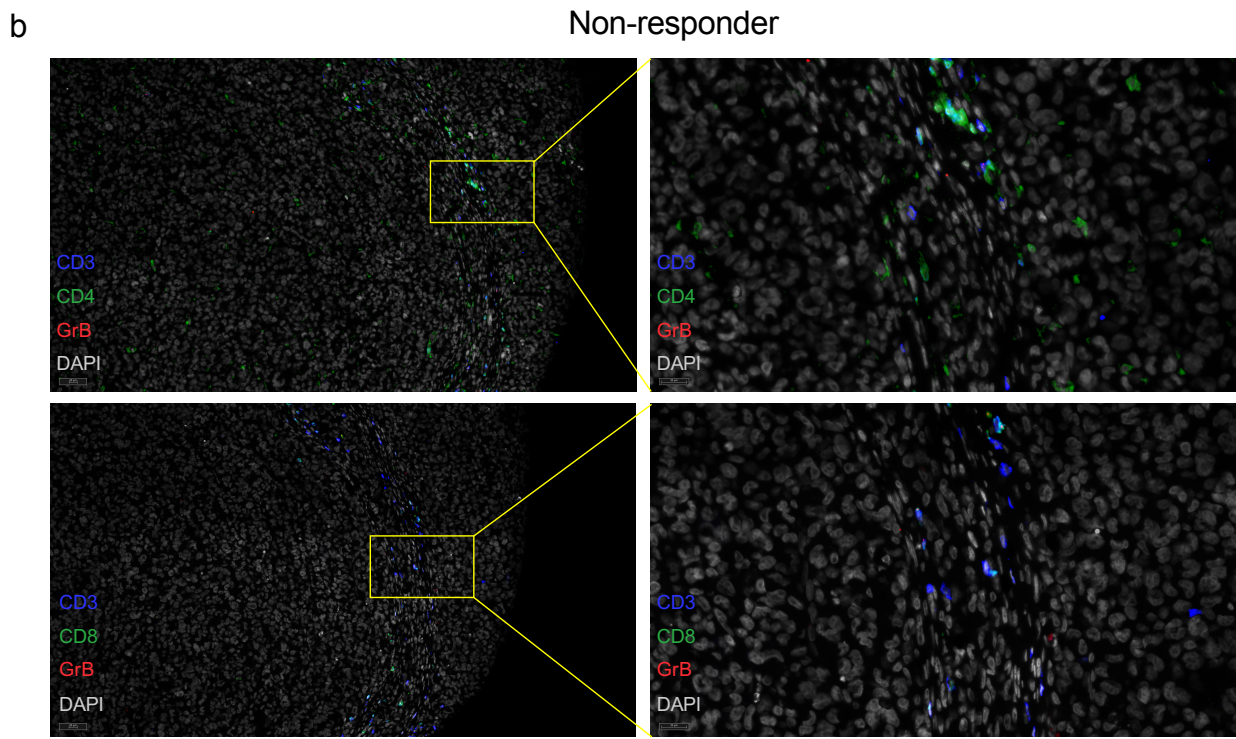
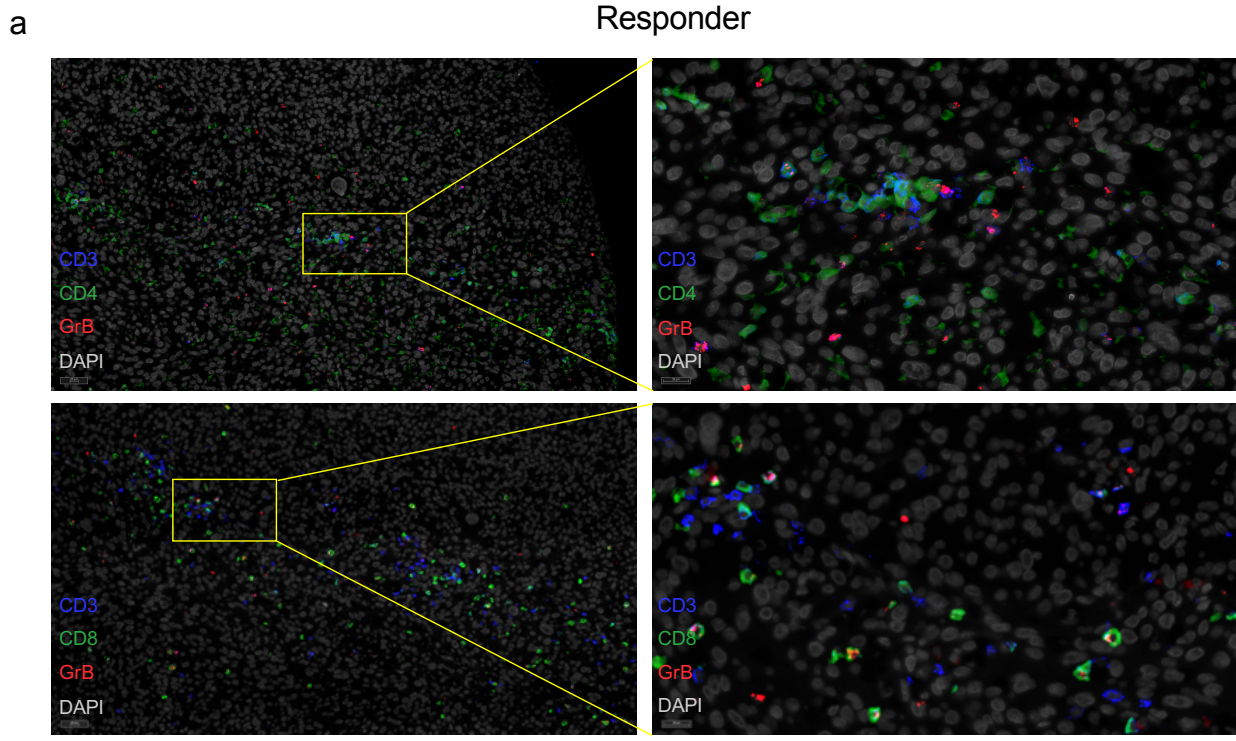
Pembrolizumab



Supplemental Figure 1. Blood sampling and drug infusion schedule.



Supplemental Figure 2. Serum cytokine profile before and after 1 and 3 months of anti-PD1 therapy. Cohort: NR = non-responder, R = responder.



Supplemental Figure 3. Multiplexed immunohistochemistry of intratumoral lymphocytes from FFPE metastatic melanoma biopsies at the time of diagnosis. a) Representative case of the TILs from anti-PD1 responder tumor. b) Representative case of the TILs from anti-PD1 non-responder tumor. c) Levels of the TIL subpopulations from all studied biopsies.

Antibody	Fluorochrome	Catalog no	Manufacturer
CD16	PE	561313	BD
CD3	PerCP-Cy5.5	332771	BD
CD4	PE-Cy7	560649	BD
GammaDelta	APC	555718	BD
CD45	APC-H7	560178	BD
CD8	BV510	563919	BD
CD56	BV421	562751	BD
PD1 (clone: MIH4)	FITC	557860	BD
PD1 (clone: EH12.1)	BB515	564494	BD
LAG-3	PE	12-2239-42	eBioscience
ICOS	PE-Cy7	25-9948-41	eBioscience
CTLA4	APC	560938	BD
HLA-DR	BB515	564516	BD
CD27	PE	555441	BD
CD25	PE-Cy7	561405	BD
CD11b	APC	550019	BD
NKG2C	AF488	FAB138G	RnD
CD161	PE	556081	BD
NKG2D	PE-Cy7	562365	BD
NKG2A	APC	FAB1059A	RnD
3DL1 (CD158e)	FITC	130-099-387	Miltenyi Biotec
2DS4 (CD158i)	PE-Vio770	130-099-963	Miltenyi Biotec
CD3	VioGreen	130-098-164	Miltenyi Biotec
2DL2/S2/L3 (CD158b)	PE	130-099-397	Miltenyi Biotec
2DL1/S1 (CD158a/h)	APC	130-099-715	Miltenyi Biotec
2DL1 (CD158a)	APC-Vio770	130-103-970	Miltenyi Biotec
CD45	VioBlue	130-098-136	Miltenyi Biotec
CD56	PerCP-Vio700	130-100-679	Miltenyi Biotec
DNAM	BB515	565152	BD
CD57	PE	560844	BD
NKp46	PE-Cy7	562101	BD
NKp30	APC	558408	BD
CXCR3	AF488	561730	BD
CCR7	PE	FAB197P	RnD
CD45RO	PE-Cy7	560608	BD
CXCR4	APC	560936	BD

Supplemental Table 1. Antibodies used in immunophenotyping assay.