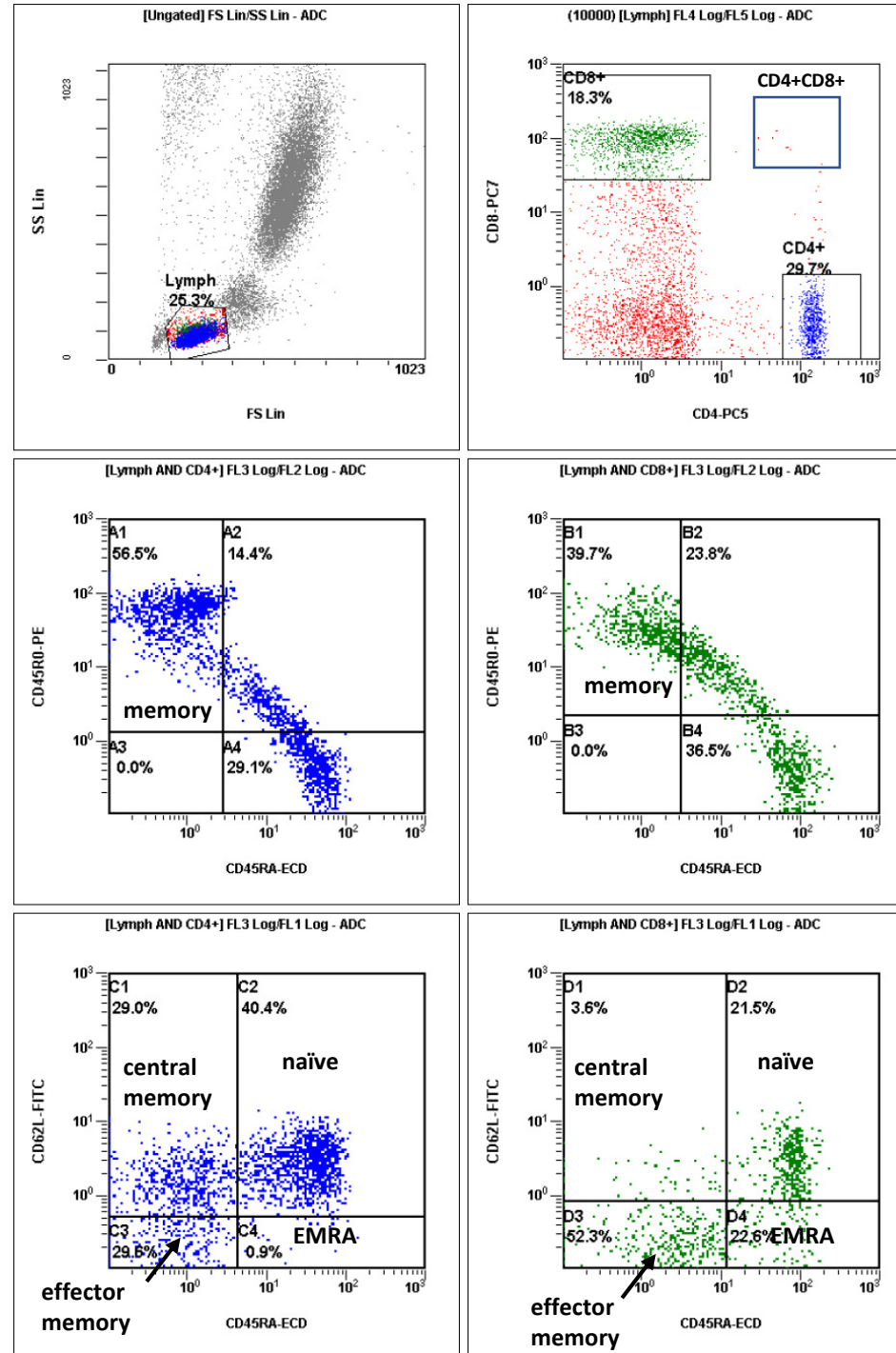


## Figure S1: Gating strategy

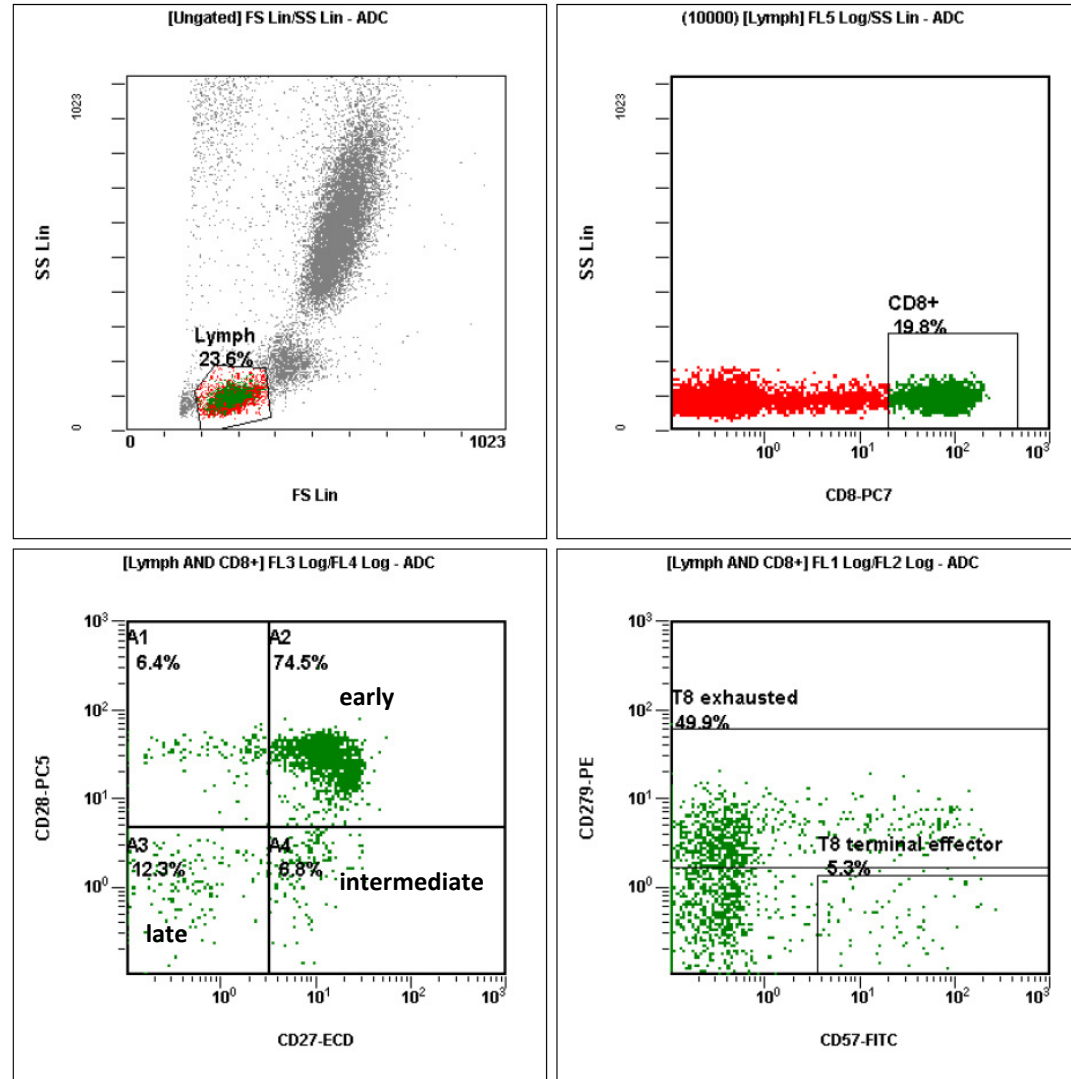
### A: CD4+ and CD8+ T cells; naïve, center memory, effector memory, EMRA

Lymphocytes were identified by using forward and side scatter. T lymphocytes were defined by positivity for CD8 or CD4 and subdivided into naïve (CD62L+ CD45RA+), memory T cells (CD4+ CD45RA- CD45RO+ /CD8+ CD45RA- CD45RO+) which were further divided into central memory (CD62L+ CD45RA-), effector memory (CD62L- CD45RA-) and effector memory RA+ (EMRA) (CD62L- CD45RA+).



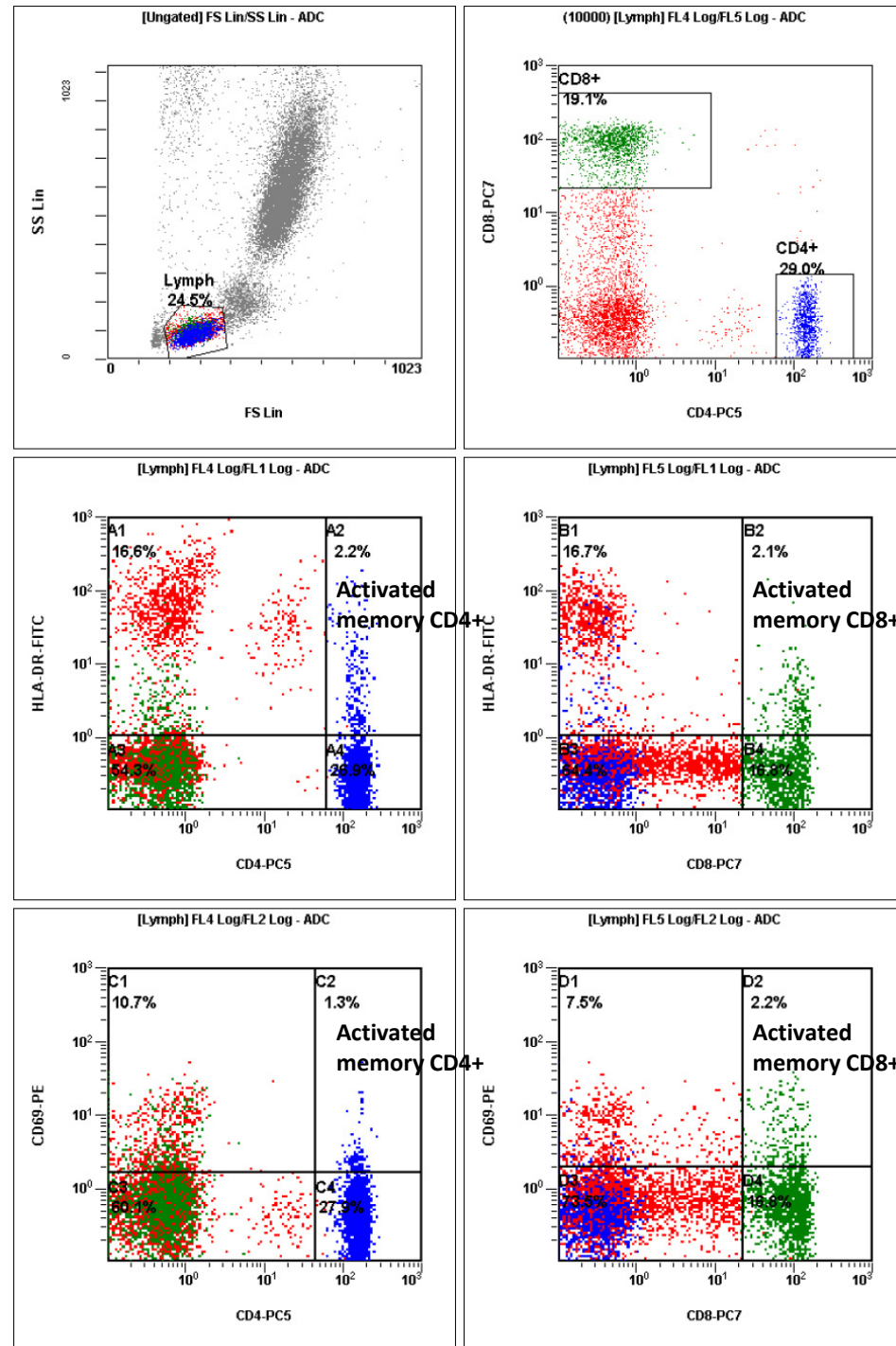
**B: CD8+ T cells; early, intermediate, late, exhausted, terminal effector**

Within CD8+ T lymphocytes, activated subsets in early (CD28+ CD27+), intermediate (CD28- CD27+) and late (CD28- CD27-) status were identified as well as exhausted (CD279+) and terminal effector (CD279- CD57+) cells.



### C: Activated memory CD4+ and CD8+ T cells

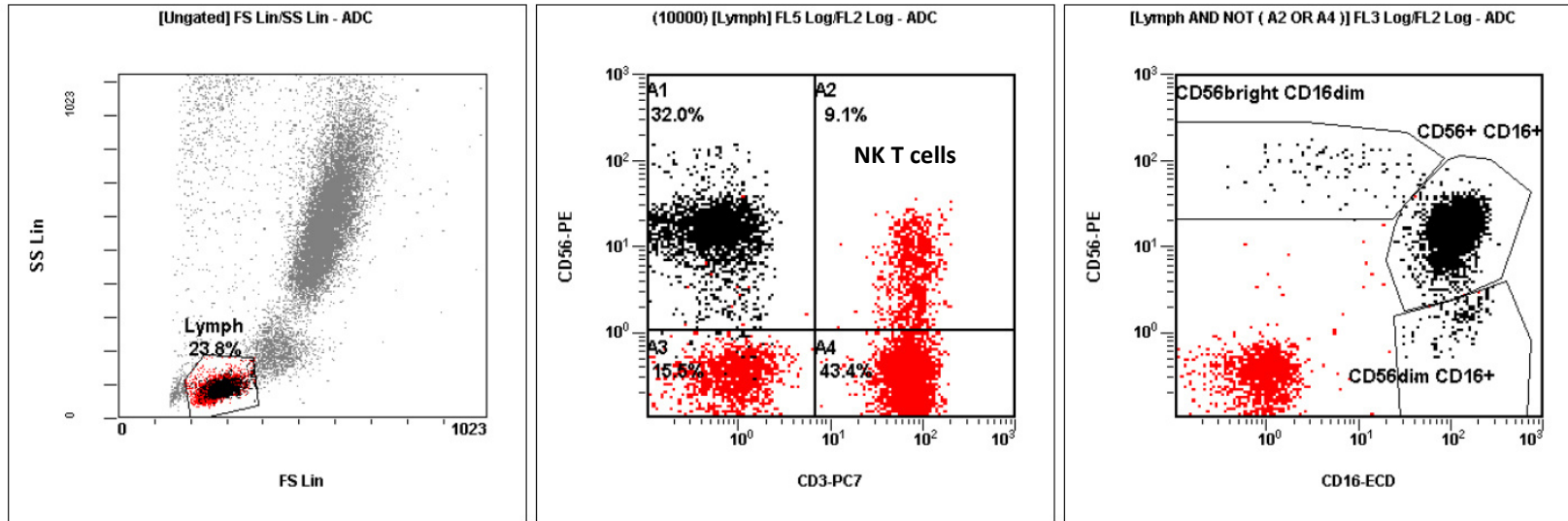
CD4 and CD8 positive T lymphocytes were classified as activated memory (HLA-DR+ or CD69+) cells.



## D: NK T cells and NK cells

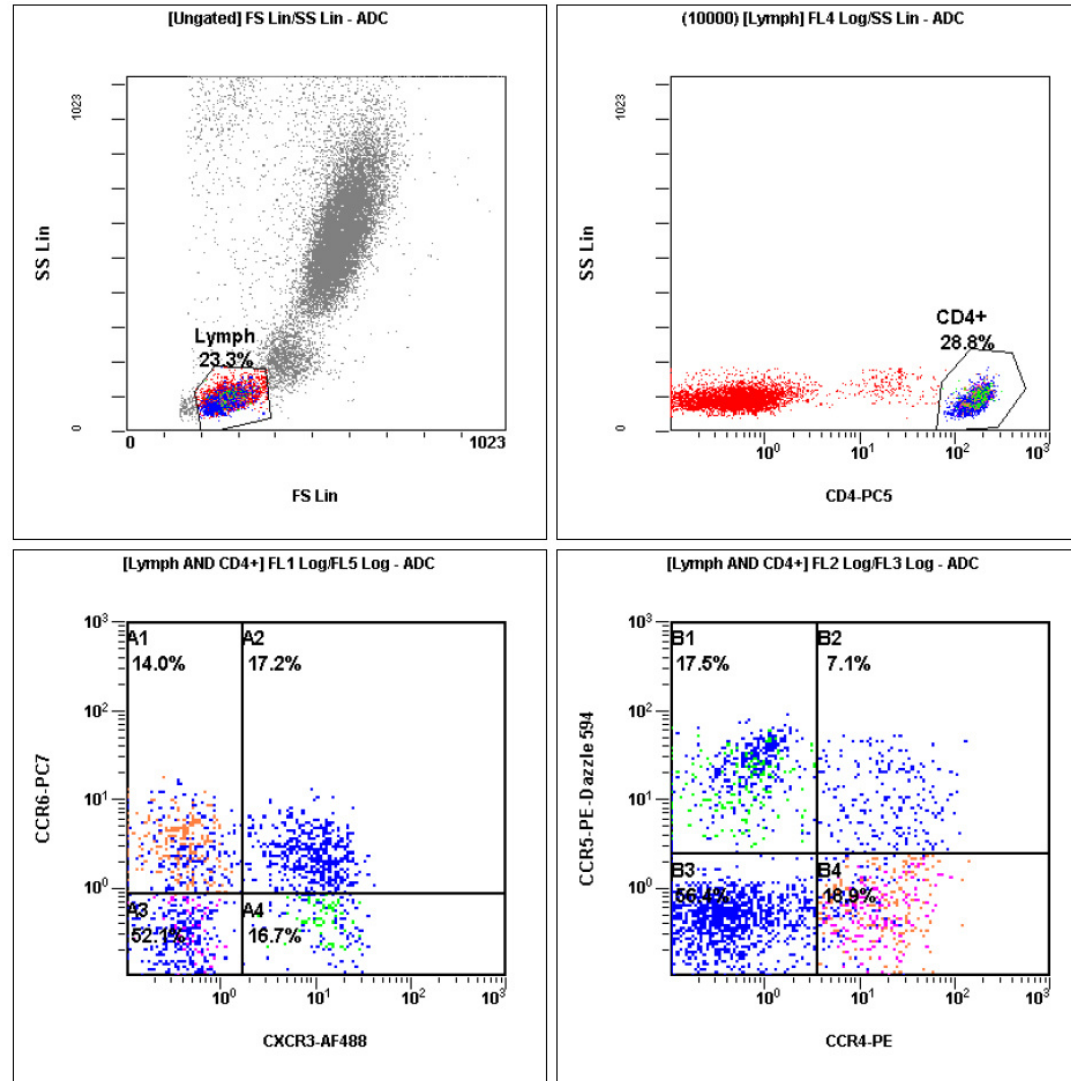
NK-like T cells were defined as CD56+ CD3+.

NK cells were detected as CD56+ cells and subdivided in three NK subsets (CD56+ CD16+, CD56dim CD16bright, CD56bright CD16dim).



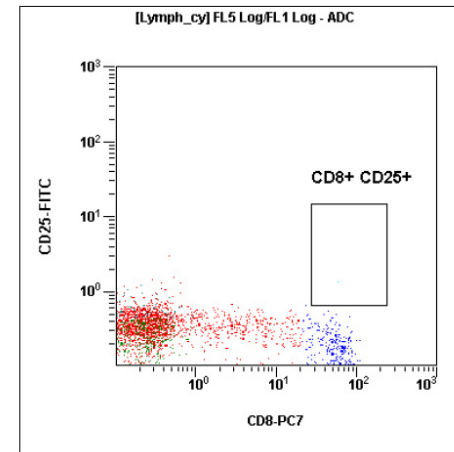
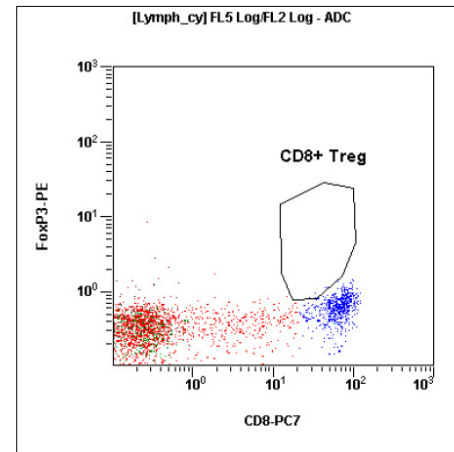
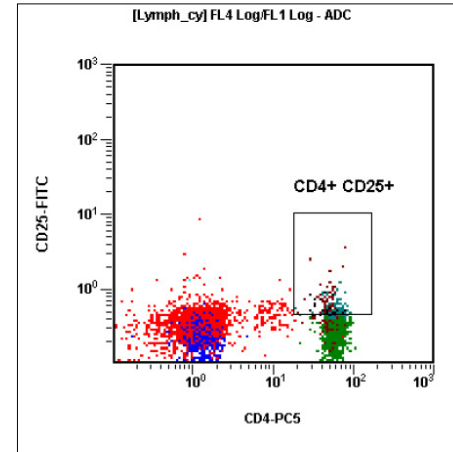
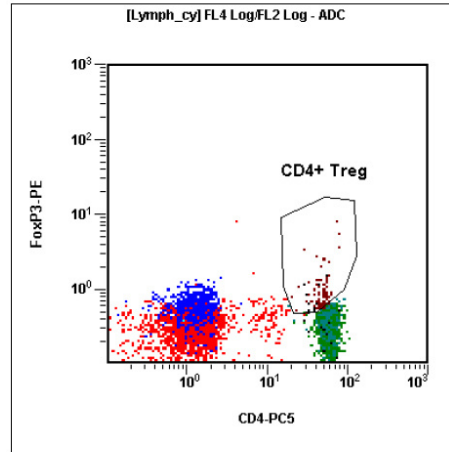
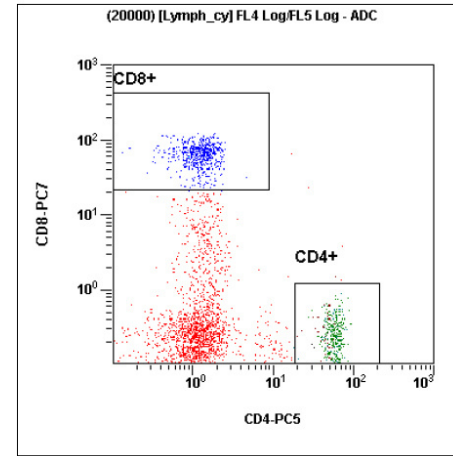
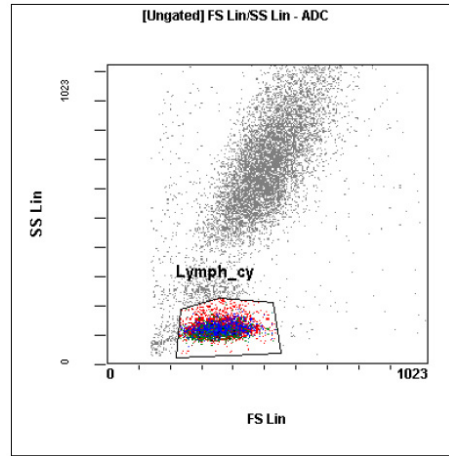
## E: T helper cells

Th1 cells were defined as CD4+ CXCR3+ CCR4- CCR5+ CCR6-;  
Th2 cells were defined as CD4+ CXCR3- CCR4+ CCR5- CCR6-;  
Th17 cells were defined as CD4+ CXCR3- CCR4+ CCR5- CCR6+.



## F: Regulatory CD4 and CD8 T cells

CD4 and CD8 positive T lymphocytes were classified as regulatory (FoxP3+ or CD25+ cells).



**Table S1: Fluorochrome-antibody conjugates**

Cell population	Antigen	Fluorochrome	Clone	Isotype	Beckman Coulter/Biolegend item number
B	IgD	FITC	IA6-2	IgG2a	B30652
B	CD24	PE	ALB9	IgG1	IM1428U
B, exhausted T	CD27	ECD	1A4CD27	IgG1	B26603
B	CD38	PC5	LS198-4-3	IgG1	A07780
B	CD19	PC7	J3-119	IgG1 kappa	IM3628
Memory T	CD62L	FITC	DREG56	IgG1	IM1231U
Memory T	CD45 R0	PE	UCHL1	IgG2a	A07787
Memory T, Treg	CD45RA	ECD	2H4LDH11LDB9	IgG1	IM2711U
Memory T, activated T, Treg, Th subsets	CD4	PC5	13B8.2	IgG1	A07752
Memory T, Treg, exhausted T, activated T	CD8	PC7	SFCI21Thy2D3	IgG1	737661
Exhausted CD8-T	CD57	FITC	NC1	IgM	B49188
Exhausted CD8-T	CD279	PE	PD1.3	IgG2b	B30634
Exhausted CD8-T	CD28	PC5	CD28.2	IgG1	6607108
Activated T	HLA-DR	FITC	Immu-357	IgG1	IM1638U
Activated T	CD69	PE	TP1.55.3	IgG2b	IM1943U
Treg	CD25	FITC	B1.49.9	IgG2a	IM0478U
Treg	FoxP3	PE	Ab259D	IgG1 kappa	B46031
T/NK	CD56	PE	N901/NK-1	IgG1	A07788
T/NK	CD16	ECD	3G8	IgG1	A33098
T/NK	CD19	PC5	J3-119	IgG1	A07771
T/NK	CD3	PC7	UCHT1	IgG1	737657
Th subsets	CD183 (CXCR3)	AF488	G025H7	IgG1	B68144
	CD194 (CCR4)	PE	L291H4	IgG1	359412
	CD195 (CCR5)	PE/Dazzle 594	J418F1	IgG2b	359126
	CD196 (CCR6)	PC7	B-R35	IgG2a	B68132

*FITC* fluorescein isothiocyanate, *PE* phycoerythrin, *ECD* phycoerythrin-Texas red, *PC-5* phycoerythrin cyanin, *PC7* phycoerythrin cyanin7, *AF488* Alexa-Fluor 488

Table S2 Lymphocyte subsets and p values vor subgroups

**A) Men vs. Women**

	Men (n=14)			Women (n=12)		
	Before chemotherapy	After chemotherapy	P value	Before chemotherapy	After chemotherapy	P value
<b>B Lymphocytes</b>						
B Lymphocytes	0.059 [0.024; 0.148]	0.046 [0.025; 0.066]	0.039	0.105 [0.071; 0.184]	0.060 [0.023; 0.134]	<b>0.017</b>
naive	0.031 [0.010; 0.083]	0.021 [0.011; 0.041]	0.064	0.067 [0.044; 0.136]	0.044 [0.014; 0.094]	<b>0.007</b>
memory	0.003 [0.001; 0.005]	0.002 [0.001; 0.005]	0.087	0.006 [0.003; 0.013]	0.003 [0.001; 0.004]	<b>0.005</b>
class switched	0.010 [0.003; 0.021]	0.004 [0.002; 0.012]	0.101	0.012 [0.006; 0.022]	0.007 [0.004; 0.015]	0.059
transitory	0.001 [0.000; 0.004]	0.000 [0.000; 0.003]	0.814	0.003 [0.001; 0.005]	0.001 [0.000; 0.002]	0.139
<b>CD8+ T Lymphocytes</b>						
CD8+ Lymphocytes	0.198 [0.089; 0.311]	0.206 [0.099; 0.265]	0.638	0.247 [0.134; 0.483]	0.300 [0.156; 0.449]	0.937
CD4+CD8+	0.005 [0.001; 0.010]	0.003 [0.001; 0.010]	0.807	0.006 [0.002; 0.016]	0.004 [0.003; 0.013]	0.272
memory	0.054 [0.039; 0.110]	0.063 [0.033; 0.128]	0.510	0.096 [0.039; 0.145]	0.105 [0.071; 0.150]	0.583
central memory	0.025 [0.015; 0.067]	0.024 [0.016; 0.036]	0.433	0.031 [0.013; 0.058]	0.030 [0.017; 0.053]	0.308
naive	0.039 [0.012; 0.091]	0.034 [0.014; 0.048]	0.084	0.044 [0.021; 0.102]	0.042 [0.022; 0.139]	0.583
effector memory	0.048 [0.035; 0.068]	0.051 [0.026; 0.102]	0.551	0.103 [0.037; 0.136]	0.080 [0.058; 0.121]	0.937
EMRA	0.036 [0.022; 0.106]	0.056 [0.028; 0.097]	0.975	0.065 [0.029; 0.192]	0.087 [0.035; 0.157]	0.754
early	0.074 [0.035; 0.168]	0.068 [0.045; 0.122]	0.730	0.112 [0.057; 0.271]	0.121 [0.068; 0.241]	0.272
intermediate	0.001 [0.005; 0.012]	0.014 [0.006; 0.015]	0.245	0.017 [0.008; 0.028]	0.031 [0.009; 0.045]	0.158
late	0.043 [0.020; 0.120]	0.054 [0.022; 0.114]	0.433	0.044 [0.029; 0.126]	0.058 [0.026; 0.159]	0.530
exhausted	0.049 [0.030; 0.084]	0.058 [0.031; 0.098]	0.638	0.076 [0.041; 0.199]	0.099 [0.053; 0.147]	0.480
terminal effector	0.036 [0.015; 0.105]	0.032 [0.012; 0.090]	0.109	0.030 [0.022; 0.116]	0.046 [0.019; 0.135]	0.937
HLA-DR+	0.049 [0.026; 0.106]	0.074 [0.025; 0.120]	0.826	0.092 [0.039; 0.207]	0.123 [0.039; 0.202]	0.583
CD69+	0.027 [0.011; 0.118]	0.031 [0.017; 0.085]	0.331	0.040 [0.029; 0.060]	0.056 [0.030; 0.080]	0.388
regulatory	0.001 [0.000; 0.003]	0.001 [0.000; 0.001]	0.530	0.000 [0.000; 0.002]	0.001 [0.000; 0.003]	0.333
CD25+	0.000 [0.000; 0.001]	0.001 [0.000; 0.001]	0.363	0.001 [0.000; 0.001]	0.001 [0.000; 0.001]	0.433
<b>CD4+ T Lymphocytes</b>						
CD4+ Lymphocytes	0.435 [0.322; 0.801]	0.384 [0.177; 0.655]	0.109	0.690 [0.394; 0.987]	0.496 [0.297; 0.918]	0.583
memory	0.282 [0.172; 0.459]	0.290 [0.153; 0.325]	0.158	0.418 [0.251; 0.591]	0.346 [0.179; 0.587]	0.638
central memory	0.199 [0.126; 0.336]	0.170 [0.075; 0.256]	0.096	0.252 [0.135; 0.342]	0.192 [0.113; 0.353]	0.480
naive	0.153 [0.048; 0.330]	0.104 [0.031; 0.260]	0.198	0.251 [0.070; 0.398]	0.127 [0.058; 0.360]	0.117
effector memory	0.086 [0.050; 0.153]	0.082 [0.068; 0.127]	0.594	0.155 [0.111; 0.233]	0.200 [0.064; 0.254]	0.814
EMRA	0.003 [0.001; 0.012]	0.004 [0.001; 0.016]	0.470	0.014 [0.005; 0.028]	0.008 [0.003; 0.025]	0.638
HLA-DR+	0.051 [0.039; 0.068]	0.046 [0.037; 0.068]	0.683	0.071 [0.048; 0.114]	0.058 [0.031; 0.180]	0.814
CD69+	0.043 [0.037; 0.068]	0.035 [0.020; 0.043]	0.074	0.068 [0.034; 0.124]	0.053 [0.021; 0.109]	0.182



Th1	0.021 [0.014; 0.048]	0.023 [0.011; 0.038]	0.173	0.052 [0.027; 0.075]	0.056 [0.016; 0.081]	0.433
Th2	0.047 [0.017; 0.091]	0.041 [0.021; 0.070]	0.650	0.058 [0.028; 0.092]	0.046 [0.024; 0.103]	0.937
Th17	0.032 [0.016; 0.048]	0.033 [0.023; 0.047]	0.861	0.036 [0.021; 0.058]	0.027 [0.012; 0.104]	0.695
regulatory	0.024 [0.010; 0.044]	0.012 [0.007; 0.034]	0.048	0.027 [0.021; 0.050]	0.015 [0.010; 0.035]	0.530
CD25+	0.005 [0.003; 0.011]	0.008 [0.003; 0.012]	0.778	0.012 [0.007; 0.016]	0.012 [0.008; 0.019]	0.308
CD4/CD8	2.211 [1.758; 4.899]	1.778 [1.231; 3.765]	0.272	2.813 [1.535; 3.699]	1.854 [1.353; 3.334]	0.182

	<b>Men (n=14)</b>		<b>P value</b>	<b>Women (n=12)</b>		<b>P value</b>
	<b>Before chemotherapy</b>	<b>After chemotherapy</b>		<b>Before chemotherapy</b>	<b>After chemotherapy</b>	
<b>NK cells</b>						
NK Cells	0.127 [0.080; 0.283]	0.126 [0.065; 0.292]	0.701	0.133 [0.114; 0.194]	0.128 [0.082; 0.192]	0.530
CD56+CD16+	0.032 [0.018; 0.120]	0.047 [0.016; 0.079]	0.182	0.039 [0.016; 0.064]	0.019 [0.006; 0.067]	0.239
CD56bright CD16dim	0.003 [0.000; 0.006]	0.003 [0.001; 0.008]	0.158	0.003 [0.001; 0.007]	0.003 [0.001; 0.005]	0.530
CD56dim CD16bright	0.004 [0.002; 0.015]	0.006 [0.002; 0.010]	0.875	0.004 [0.003; 0.018]	0.007 [0.001; 0.009]	0.388
NK/T	0.044 [0.025; 0.129]	0.061 [0.024; 0.084]	0.650	0.047 [0.025; 0.082]	0.025 [0.014; 0.079]	0.754

### **B) With G-CSF administration vs. Without G-CSF administration**

	<b>with G-CSF administration (n=15)</b>			<b>without G-CSF administration (n=11)</b>		
	<b>Before chemotherapy</b>	<b>After chemotherapy</b>	<b>P value</b>	<b>Before chemotherapy</b>	<b>After chemotherapy</b>	<b>P value</b>
<b>B Lymphocytes</b>						
B Lymphocytes	0.070 [0.028; 0.104]	0.038 [0.013; 0.054]	<b>0.013</b>	0.145 [0.048; 0.190]	0.070 [0.044; 0.134]	0.022
naive	0.041 [0.013; 0.059]	0.021 [0.005; 0.036]	<b>0.019</b>	0.084 [0.028; 0.148]	0.053 [0.017; 0.094]	<b>0.017</b>
memory	0.003 [0.001; 0.007]	0.002 [0.001; 0.003]	<b>0.019</b>	0.006 [0.003; 0.014]	0.004 [0.002; 0.005]	<b>0.013</b>
class switched	0.006 [0.003; 0.015]	0.004 [0.002; 0.006]	0.055	0.018 [0.009; 0.032]	0.010 [0.006; 0.020]	0.074
transitory	0.001 [0.000; 0.004]	0.000 [0.000; 0.004]	0.754	0.003 [0.000; 0.005]	0.005 [0.000; 0.002]	0.169

	<b>with G-CSF administration (n=15)</b>			<b>without G-CSF administration (n=11)</b>		
	<b>Before chemotherapy</b>	<b>After chemotherapy</b>	<b>P value</b>	<b>Before chemotherapy</b>	<b>After chemotherapy</b>	<b>P value</b>
<b>CD8+ T Lymphocytes</b>						
CD8+ Lymphocytes	0.221 [0.084; 0.314]	0.217 [0.100; 0.300]	0.776	0.206 [0.186; 0.460]	0.284 [0.189; 0.344]	0.929
CD4+CD8+	0.004 [0.001; 0.011]	0.004 [0.001; 0.015]	0.730	0.007 [0.002; 0.017]	0.003 [0.002; 0.011]	0.131
memory	0.052 [0.034; 0.110]	0.079 [0.034; 0.121]	0.078	0.104 [0.053; 0.134]	0.093 [0.034; 0.164]	0.929
central memory	0.022 [0.007; 0.061]	0.023 [0.015; 0.055]	0.363	0.034 [0.027; 0.084]	0.025 [0.023; 0.046]	0.286
naive	0.035 [0.012; 0.089]	0.033 [0.008; 0.037]	0.112	0.047 [0.031; 0.097]	0.059 [0.028; 0.116]	0.790
effector memory	0.048 [0.033; 0.106]	0.066 [0.030; 0.123]	0.334	0.079 [0.039; 0.144]	0.079 [0.027; 0.118]	0.534
EMRA	0.034 [0.020; 0.120]	0.056 [0.025; 0.120]	0.910	0.056 [0.038; 0.102]	0.068 [0.037; 0.146]	0.722
early	0.068 [0.036; 0.178]	0.073 [0.049; 0.158]	0.776	0.137 [0.070; 0.165]	0.224 [0.063; 0.229]	0.248
intermediate	0.011 [0.005; 0.017]	0.014 [0.006; 0.017]	0.112	0.010 [0.009; 0.029]	0.015 [0.010; 0.037]	0.477
late	0.032 [0.020; 0.142]	0.039 [0.016; 0.119]	0.609	0.052 [0.034; 0.108]	0.054 [0.033; 0.163]	0.722
exhausted	0.051 [0.032; 0.079]	0.058 [0.035; 0.128]	0.910	0.084 [0.038; 0.195]	0.095 [0.057; 0.115]	0.657

terminal effector	0.037 [0.016; 0.116]	0.022 [0.009; 0.101]	0.088	0.030 [0.022; 0.085]	0.038 [0.023; 0.111]	0.929
HLA-DR+	0.093 [0.016; 0.139]	0.091 [0.021; 0.157]	0.955	0.062 [0.032; 0.092]	0.074 [0.035; 0.137]	0.424
CD69+	0.041 [0.014; 0.075]	0.046 [0.019; 0.076]	0.955	0.035 [0.027; 0.057]	0.040 [0.023; 0.081]	0.929
regulatory	0.000 [0.000; 0.001]	0.001 [0.000; 0.002]	0.929	0.001 [0.000; 0.002]	0.001 [0.000; 0.002]	0.859
CD25+	0.000 [0.000; 0.001]	0.001 [0.000; 0.001]	0.256	0.001 [0.000; 0.002]	0.001 [0.000; 0.001]	0.248

	with G-CSF administration (n=15)			without G-CSF administration (n=11)		
	Before chemotherapy	After chemotherapy	P value	Before chemotherapy	After chemotherapy	P value
<b>CD4+ T Lymphocytes</b>						
CD4+ Lymphocytes	0.453 [0.189; 0.700]	0.374 [0.168; 0.667]	0.363	0.718 [0.388; 1.162]	0.590 [0.437; 0.716]	0.213
memory	0.282 [0.133; 0.482]	0.288 [0.113; 0.328]	0.733	0.435 [0.296; 0.665]	0.315 [0.255; 0.444]	0.213
central memory	0.199 [0.073; 0.301]	0.165 [0.057; 0.254]	0.256	0.235 [0.178; 0.469]	0.230 [0.127; 0.298]	0.182
naive	1.242 [0.049; 0.327]	0.056 [0.017; 0.137]	0.047	0.276 [0.088; 0.370]	0.225 [0.085; 0.308]	0.534
effector memory	0.101 [0.050; 0.184]	0.082 [0.061; 0.187]	0.334	0.142 [0.109; 0.254]	0.118 [0.081; 0.203]	0.182
EMRA	0.006 [0.001; 0.012]	0.003 [0.002; 0.005]	0.334	0.017 [0.004; 0.022]	0.016 [0.006; 0.031]	0.286
HLA-DR+	0.050 [0.038; 0.080]	0.045 [0.036; 0.070]	0.776	0.068 [0.055; 0.095]	0.047 [0.037; 0.172]	0.374
CD69+	0.040 [0.020; 0.091]	0.035 [0.024; 0.042]	0.334	0.053 [0.035; 0.126]	0.046 [0.019; 0.073]	0.050
Th1	0.021 [0.016; 0.045]	0.020 [0.010; 0.037]	0.300	0.055 [0.044; 0.082]	0.047 [0.023; 0.084]	0.213
Th2	0.041 [0.016; 0.096]	0.037 [0.011; 0.070]	0.875	0.062 [0.029; 0.085]	0.053 [0.027; 0.102]	0.534
Th17	0.032 [0.019; 0.058]	0.031 [0.010; 0.047]	0.826	0.033 [0.020; 0.051]	0.028 [0.024; 0.059]	1.0
regulatory	0.020 [0.012; 0.042]	0.013 [0.010; 0.040]	0.156	0.028 [0.021; 0.050]	0.011 [0.009; 0.020]	0.328
CD25+	0.008 [0.003; 0.022]	0.008 [0.007; 0.018]	0.211	0.008 [0.006; 0.013]	0.009 [0.003; 0.012]	1.0
CD4/CD8	0.258 [1.723; 3.547]	1.685 [1.119; 3.504]	0.281	3.482 [1.571; 3.970]	1.872 [1.343; 3.463]	0.213

	with G-CSF administration (n=15)			without G-CSF administration (n=11)		
	Before chemotherapy	After chemotherapy	P value	Before chemotherapy	After chemotherapy	P value
<b>NK cells</b>						
NK Cells	0.131 [0.086; 0.232]	0.133 [0.074; 0.256]	0.683	0.131 [0.099; 0.270]	0.126 [0.064; 0.200]	0.534
CD56+CD16+	0.031 [0.016; 0.099]	0.028 [0.009; 0.055]	0.033	0.039 [0.023; 0.068]	0.049 [0.016; 0.074]	0.722
CD56bright CD16dim	0.003 [0.000; 0.005]	0.003 [0.001; 0.006]	0.507	0.003 [0.000; 0.007]	0.004 [0.002; 0.011]	0.790
CD56dim CD16bright	0.004 [0.002; 0.021]	0.004 [0.003; 0.018]	0.249	0.004 [0.003; 0.018]	0.007 [0.004; 0.013]	0.790
NK/T	0.046 [0.022; 0.116]	0.037 [0.014; 0.072]	0.177	0.046 [0.028; 0.087]	0.066 [0.025; 0.084]	0.790

**C) Platinum containing chemotherapy vs. No platinum containing chemotherapy**

	Platinum containing chemotherapy (n=19)			No platinum containing chemotherapy (n=7)		
	Before chemotherapy	After chemotherapy	P value	Before chemotherapy	After chemotherapy	P value
<b>B Lymphocytes</b>						
B Lymphocytes	0.073 [0.039; 0.158]	0.045 [0.018; 0.079]	<b>0.002</b>	0.109 [0.048; 0.166]	0.072 [0.049; 0.118]	0.138
naive	0.042 [0.021; 0.138]	0.023 [0.009; 0.046]	<b>0.003</b>	0.065 [0.020; 0.102]	0.056 [0.020; 0.077]	0.138
memory	0.003 [0.001; 0.007]	0.002 [0.001; 0.004]	<b>0.007</b>	0.006 [0.003; 0.012]	0.004 [0.002; 0.004]	0.043

class switched	0.001; 0.005; 0.018]	0.004 [0.003; 0.008]	<b>0.018</b>	0.010 [0.009; 0.032]	0.012 [0.006; 0.019]	0.345
transitory	0.002 [0.000; 0.005]	0.000 [0.000; 0.002]	0.287	0.001 [0.002; 0.003]	0.001 [0.000; 0.002]	0.893

	Platinum containing chemotherapy (n=19)			No platinum containing chemotherapy (n=7)		
	Before chemotherapy	After chemotherapy	P value	Before chemotherapy	After chemotherapy	P value
<b>CD8+ T Lymphocytes</b>						
CD8+ Lymphocytes	0.241 [0.141; 0.384]	0.253 [0.126; 0.315]	0.243	0.194 [0.087; 0.206]	0.220 [0.094; 0.644]	0.237
CD4+CD8+	0.008 [0.002; 0.017]	0.005 [0.003; 0.015]	0.601	0.002 [0.001; 0.005]	0.002 [0.001; 0.003]	0.249
memory	0.088 [0.044; 0.133]	0.079 [0.044; 0.114]	0.601	0.055 [0.023; 0.124]	0.120 [0.022; 0.164]	0.499
central memory	0.028 [0.017; 0.076]	0.025 [0.015; 0.058]	0.243	0.028 [0.001; 0.045]	0.025 [0.016; 0.035]	0.499
naive	0.042 [0.015; 0.101]	0.034 [0.017; 0.064]	0.314	0.043 [0.018; 0.049]	0.035 [0.016; 0.072]	1.00
effector memory	0.062 [0.045; 0.110]	0.067 [0.031; 0.092]	0.841	0.039 [0.018; 0.101]	0.118 [0.021; 0.154]	0.398
EMRA	0.063 [0.022; 0.120]	0.068 [0.025; 0.119]	0.295	0.038 [0.023; 0.056]	0.068 [0.032; 0.397]	0.063
early	0.132 [0.055; 0.180]	0.082 [0.053; 0.211]	0.334	0.076 [0.038; 0.139]	0.063 [0.027; 0.114]	0.735
intermediate	0.012 [0.008; 0.020]	0.014 [0.007; 0.017]	0.260	0.009 [0.004; 0.017]	0.017 [0.008; 0.037]	0.176
late	0.054 [0.020; 0.142]	0.039 [0.023; 0.119]	0.099	0.035 [0.025; 0.108]	0.078 [0.052; 0.496]	0.128
exhausted	0.073 [0.035; 0.105]	0.065 [0.036; 0.104]	0.629	0.038 [0.030; 0.112]	0.115 [0.021; 0.160]	0.735
terminal effector	0.037 [0.022; 0.116]	0.027 [0.011; 0.101]	<b>0.013</b>	0.023 [0.019; 0.085]	0.046 [0.023; 0.244]	0.176
HLA-DR+	0.092 [0.042; 0.139]	0.074 [0.035; 0.137]	0.469	0.033 [0.029; 0.070]	0.108 [0.026; 0.479]	0.063
CD69+	0.039 [0.018; 0.075]	0.037 [0.023; 0.071]	0.546	0.035 [0.011; 0.057]	0.068 [0.010; 0.123]	0.398
regulatory	0.001 [0.000; 0.002]	0.001 [0.000; 0.002]	0.820	0.000 [0.000; 0.002]	0.001 [0.000; 0.002]	0.735
CD25+	0.001 [0.000; 0.001]	0.001 [0.000; 0.001]	0.717	0.000 [0.000; 0.002]	0.000 [0.000; 0.001]	0.735

	Platinum containing chemotherapy (n=19)			No platinum containing chemotherapy (n=7)		
	Before chemotherapy	After chemotherapy	P value	Before chemotherapy	After chemotherapy	P value
<b>CD4+ T Lymphocytes</b>						
CD4+ Lymphocytes	0.519 [0.379; 0.888]	0.442 [0.192; 0.667]	0.107	0.650 [0.330; 0.773]	0.653 [0.250; 0.716]	0.735
memory	0.296 [0.227; 0.501]	0.301 [0.137; 0.376]	0.171	0.324 [0.223; 0.441]	0.301 [0.158; 0.444]	0.735
central memory	0.199 [0.132; 0.357]	0.174 [0.064; 0.296]	0.099	0.235 [0.144; 0.322]	0.230 [0.111; 0.262]	0.499
naive	0.124 [0.053; 0.338]	0.074 [0.034; 0.225]	0.024	0.276 [0.088; 0.300]	0.244 [0.085; 0.308]	0.866
effector memory	0.123 [0.062; 0.205]	0.083 [0.065; 0.203]	0.520	0.115 [0.079; 0.165]	0.118 [0.079; 0.197]	1.0
EMRA	0.008 [0.002; 0.017]	0.004 [0.002; 0.016]	0.421	0.008 [0.004; 0.021]	0.010 [0.006; 0.031]	0.237
HLA-DR+	0.055 [0.044; 0.080]	0.044 [0.036; 0.070]	0.334	0.068 [0.028; 0.095]	0.072 [0.045; 0.175]	0.499
CD69+	0.049 [0.027; 0.116]	0.032 [0.019; 0.042]	0.027	0.053 [0.032; 0.172]	0.071 [0.035; 0.077]	0.499
Th1	0.040 [0.018; 0.053]	0.023 [0.011; 0.041]	0.048	0.066 [0.018; 0.082]	0.052 [0.014; 0.084]	1.0
Th2	0.051 [0.022; 0.096]	0.038 [0.021; 0.082]	0.879	0.049 [0.029; 0.085]	0.053 [0.024; 0.074]	0.612
Th17	0.037 [0.025; 0.058]	0.031 [0.019; 0.047]	0.349	0.022 [0.017; 0.040]	0.032 [0.022; 0.059]	0.310
regulatory	0.028 [0.015; 0.050]	0.012 [0.009; 0.031]	0.036	0.024 [0.020; 0.046]	0.020 [0.010; 0.079]	0.866
CD25+	0.008 [0.005; 0.016]	0.009 [0.007; 0.014]	0.445	0.008 [0.004; 0.013]	0.008 [0.002; 0.015]	0.735

CD4/CD8	2.084 [1.571; 3.547]	2.872 [1.343; 3.475]	0.243	3.800 [2.258; 4.928]	1.776 [1.111; 4.083]	0.310
---------	----------------------	----------------------	-------	----------------------	----------------------	-------

**Platinum containing chemotherapy (n=19)**

**No platinum containing chemotherapy (n=7)**

	Before chemotherapy	After chemotherapy	P value	Before chemotherapy	After chemotherapy	P value
<b>NK cells</b>						
NK Cells	0.152 [0.104; 0.296]	0.126 [0.069; 0.256]	0.122	0.109 [0.087; 0.137]	0.129 [0.115; 0.209]	0.310
CD56+CD16+	0.029 [0.016; 0.090]	0.019 [0.011; 0.051]	<b>0.006</b>	0.047 [0.027; 0.089]	0.072 [0.028; 0.078]	0.600
CD56bright CD16dim	0.003 [0.000; 0.005]	0.003 [0.001; 0.006]	0.420	0.005 [0.001; 0.012]	0.003 [0.002; 0.013]	0.753
CD56dim CD16bright	0.004 [0.002; 0.019]	0.006 [0.001; 0.009]	0.248	0.004 [0.003; 0.018]	0.006 [0.002; 0.020]	0.463
NK/T	0.044 [0.022; 0.110]	0.027 [0.015; 0.072]	0.064	0.062 [0.029; 0.110]	0.084 [0.037; 0.159]	0.463

**D) CR + PR vs. SD + PD**

	CR + PR (n=11) Before chemotherapy	After chemotherapy	P value	SD + PD (n=15) Before chemotherapy	After chemotherapy	P value
<b>B Lymphocytes</b>						
B Lymphocytes	0.082 [0.073; 0.181]	0.049 [0.038; 0.106]	0.041	0.066 [0.036; 0.158]	0.044 [0.017; 0.110]	<b>0.006</b>
naive	0.058 [0.022; 0.145]	0.025 [0.016; 0.051]	0.026	0.041 [0.020; 0.102]	0.028 [0.007; 0.086]	<b>0.012</b>
memory	0.004 [0.003; 0.007]	0.003 [0.002; 0.005]	0.091	0.003 [0.001; 0.013]	0.001 [0.001; 0.004]	<b>0.005</b>
class switched	0.015 [0.009; 0.029]	0.009 [0.004; 0.020]	0.213	0.008 [0.003; 0.015]	0.004 [0.002; 0.006]	<b>0.012</b>
transitory	0.001 [0.000; 0.003]	0.000 [0.000; 0.002]	0.799	0.003 [0.001; 0.005]	0.000 [0.000; 0.002]	0.272

	CR + PR (n=11) Before chemotherapy	After chemotherapy	P value	SD + PD (n=15) Before chemotherapy	After chemotherapy	P value
<b>CD8+ T Lymphocytes</b>						
CD8+ Lymphocytes	0.241 [0.201; 0.314]	0.300 [0.216; 0.393]	0.155	0.178 [0.084; 0.482]	0.161 [0.080; 0.284]	0.156
CD4+CD8+	0.008 [0.002; 0.017]	0.005 [0.003; 0.018]	0.594	0.003 [0.001; 0.010]	0.003 [0.001; 0.006]	0.056
memory	0.109 [0.055; 0.134]	0.121 [0.076; 0.182]	0.091	0.049 [0.029; 0.104]	0.070 [0.030; 0.105]	0.650
central memory	0.048 [0.027; 0.076]	0.036 [0.025; 0.058]	0.534	0.021 [0.007; 0.039]	0.017 [0.012; 0.028]	0.281
naive	0.042 [0.029; 0.088]	0.037 [0.027; 0.064]	0.722	0.043 [0.015; 0.101]	0.034 [0.016; 0.079]	0.394
effector memory	0.064 [0.053; 0.113]	0.100 [0.063; 0.154]	0.091	0.046 [0.024; 0.106]	0.055 [0.026; 0.080]	0.363
EMRA	0.063 [0.034; 0.120]	0.105 [0.068; 0.121]	0.075	0.042 [0.022; 0.087]	0.044 [0.025; 0.068]	0.256
early	0.145 [0.070; 0.178]	0.110 [0.072; 0.229]	0.929	0.068 [0.036; 0.139]	0.064 [0.027; 0.129]	0.125
intermediate	0.010 [0.006; 0.012]	0.015 [0.013; 0.031]	0.033	0.015 [0.005; 0.020]	0.012 [0.006; 0.017]	0.570
late	0.074 [0.032; 0.155]	0.096 [0.054; 0.247]	0.477	0.035 [0.020; 0.079]	0.033 [0.023; 0.105]	0.334
exhausted	0.073 [0.050; 0.084]	0.095 [0.057; 0.015]	0.328	0.038 [0.032; 0.112]	0.059 [0.027; 0.104]	0.211
terminal effector	0.093 [0.019; 0.141]	0.066 [0.023; 0.144]	0.859	0.026 [0.022; 0.046]	0.022 [0.011; 0.055]	0.233
HLA-DR+	0.094 [0.042; 0.139]	0.114 [0.074; 0.217]	0.131	0.053 [0.016; 0.093]	0.048 [0.020; 0.135]	0.496
CD69+	0.041 [0.029; 0.198]	0.076 [0.026; 0.129]	0.859	0.029 [0.011; 0.055]	0.037 [0.010; 0.065]	0.865
regulatory	0.001 [0.000; 0.004]	0.001 [0.000; 0.003]	0.646	0.000 [0.000; 0.001]	0.001 [0.000; 0.001]	0.695
CD25+	0.001 [0.000; 0.002]	0.001 [0.000; 0.001]	0.286	0.000 [0.000; 0.001]	0.001 [0.000; 0.001]	0.256

	CR + PR (n=11) Before chemotherapy	After chemotherapy	P value	SD + PD (n=15) Before chemotherapy	After chemotherapy	P value
<b>CD4+ T Lymphocytes</b>						

CD4+ Lymphocytes	0.650 [0.388; 0.888]	0.590 [0.252; 0.716]	0.328	0.519 [0.299; 0.773]	0.437 [0.181; 0.661]	0.233
memory	0.358 [0.296; 0.591]	0.328 [0.193; 0.444]	0.477	0.282 [0.197; 0.482]	0.288 [0.154; 0.322]	0.256
central memory	0.268 [0.199; 0.373]	0.230 [0.120; 0.298]	0.182	0.185 [0.111; 0.299]	0.165 [0.078; 0.262]	0.233
naive	0.244 [0.069; 0.327]	0.116 [0.034; 0.261]	0.328	0.182 [0.053; 0.338]	0.091 [0.039; 0.308]	0.100
effector memory	0.135 [0.070; 0.202]	0.128 [0.072; 0.197]	1.0	0.106 [0.055; 0.205]	0.085 [0.061; 0.203]	0.496
EMRA	0.114 [0.003; 0.022]	0.016 [0.004; 0.031]	0.374	0.008 [0.001; 0.017]	0.004 [0.002; 0.010]	0.460
HLA-DR+	0.080 [0.044; 0.095]	0.053 [0.037; 0.175]	0.929	0.055 [0.038; 0.071]	0.045 [0.031; 0.072]	0.427
CD69+	0.050 [0.032; 0.172]	0.037 [0.015; 0.077]	0.182	0.049 [0.025; 0.091]	0.035 [0.024; 0.047]	0.061
Th1	0.044 [0.021; 0.066]	0.036 [0.021; 0.052]	0.424	0.031 [0.016; 0.072]	0.021 [0.011; 0.062]	0.177
Th2	0.068 [0.045; 0.107]	0.062 [0.021; 0.103]	0.374	0.032 [0.018; 0.082]	0.029 [0.024; 0.073]	0.875
Th17	0.040 [0.017; 0.056]	0.043 [0.024; 0.059]	0.722	0.027 [0.020; 0.053]	0.026 [0.021; 0.047]	0.975
regulatory	0.020 [0.015; 0.050]	0.040 [0.010; 0.079]	0.477	0.028 [0.015; 0.042]	0.012 [0.009; 0.016]	<b>0.001</b>
CD25+	0.009 [0.004; 0.017]	0.012 [0.008; 0.015]	0.477	0.008 [0.005; 0.013]	0.008 [0.003; 0.012]	0.496
CD4/CD8	2.548 [1.571; 4.928]	1.381 [1.111; 2.116]	0.101	2.258 [1.723; 3.800]	1.960 [1.558; 4.548]	0.865

**CR + PR (n=11)**

**Before chemotherapy**

**After chemotherapy**

**P value**

**SD + PD (n=15)**

**Before chemotherapy**

**After chemotherapy**

**P value**

**NK cells**

NK Cells	0.240 [0.124; 0.310]	0.212 [0.127 ; 0.332]	0.799	0.126 [0.077; 0.137]	0.105 [0.056; 0.163]	0.496
CD56+CD16+	0.062 [0.030; 0.098]	0.072 [0.046; 0.095]	0.721	0.024 [0.014; 0.048]	0.019 [0.009; 0.043]	0.048
CD56bright CD16dim	0.004 [0.000; 0.008]	0.006 [0.001; 0.011]	0.445	0.002 [0.001; 0.005]	0.003 [0.002; 0.004]	0.975
CD56dim CD16bright	0.004 [0.003; 0.020]	0.007 [0.004; 0.015]	0.646	0.004 [0.002; 0.016]	0.004 [0.001; 0.008]	0.177
NK/T	0.078 [0.034; 0.124]	0.084 [0.053; 0.117]	0.657	0.037 [0.016; 0.057]	0.024 [0.013; 0.055]	0.109

**E) Radiation vs. No Radiation**

**Radiation (n=8)**

**Before chemotherapy**

**After chemotherapy**

**P value**

**No radiation (n=18)**

**Before chemotherapy**

**After chemotherapy**

**P value**

**B Lymphocytes**

B Lymphocytes	0.074 [0.046; 0.106]	0.033 [0.009; 0.056]	0.055	0.078 [0.038; 0.057]	0.057 [0.037; 0.107]	0.178
naive	0.043 [0.026; 0.071]	0.016 [0.002; 0.045]	0.028	0.056 [0.018; 0.140]	0.033 [0.017; 0.059]	<b>0.013</b>
memory	0.005 [0.003; 0.011]	0.001 [0.000; 0.008]	0.028	0.003 [0.001; 0.008]	0.002 [0.001; 0.004]	<b>0.010</b>
class switched	0.013 [0.007; 0.015]	0.004 [0.003; 0.009]	<b>0.018</b>	0.010 [0.003; 0.024]	0.006 [0.004; 0.015]	0.196
transitory	0.003 [0.001; 0.005]	0.000 [0.000; 0.006]	0.735	0.001 [0.000; 0.005]	0.001 [0.000; 0.002]	0.281

**Radiation (n=8)**

**Before chemotherapy**

**After chemotherapy**

**P value**

**No radiation (n=18)**

**Before chemotherapy**

**After chemotherapy**

**P value**

**CD8+ T Lymphocytes**

CD8+ Lymphocytes	0.244 [0.150; 0.455]	0.235 [0.080; 0.337]	0.123	0.204 [0.090; 0.331]	0.233 [0.146; 0.319]	0.500
CD4+CD8+	0.010 [0.004; 0.017]	0.009 [0.003; 0.018]	0.484	0.003 [0.001; 0.009]	0.003 [0.001; 0.006]	0.554
memory	0.070 [0.038; 0.140]	0.081 [0.037; 0.118]	0.484	0.059 [0.040; 0.126]	0.091 [0.033; 0.153]	0.372

central memory	0.030 [0.009; 0.072]	0.039 [0.015; 0.068]	0.674	0.028 [0.016; 0.052]	0.025 [0.016; 0.038]	0.184
naive	0.069 [0.019; 0.107]	0.033 [0.017; 0.121]	0.575	0.039 [0.016; 0.081]	0.036 [0.016; 0.066]	0.420
effector memory	0.055 [0.043; 0.109]	0.060 [0.031; 0.068]	0.327	0.054 [0.031; 0.119]	0.086 [0.029; 0.136]	0.372
EMRA	0.065 [0.029; 0.249]	0.058 [0.024; 0.136]	0.327	0.043 [0.022; 0.109]	0.068 [0.036; 0.120]	0.349
early	0.147 [0.061; 0.275]	0.127 [0.056; 0.241]	0.093	0.073 [0.037; 0.150]	0.072 [0.048; 0.150]	0.811
intermediate	0.017 [0.013; 0.020]	0.014 [0.006; 0.047]	0.263	0.010 [0.005; 0.013]	0.014 [0.009; 0.021]	0.157
late	0.023 [0.016; 0.076]	0.024 [0.014; 0.070]	0.575	0.053 [0.032; 0.146]	0.087 [0.032; 0.152]	0.845
exhausted	0.066 [0.039; 0.103]	0.074 [0.042; 0.122]	0.575	0.055 [0.032; 0.112]	0.062 [0.034; 0.118]	0.948
terminal effector	0.038 [0.024; 0.111]	0.021 [0.010; 0.058]	0.025	0.031 [0.018; 0.120]	0.045 [0.018; 0.118]	0.879
HLA-DR+	0.085 [0.023; 0.207]	0.069 [0.028; 0.148]	0.674	0.057 [0.031; 0.109]	0.085 [0.033; 0.163]	0.349
CD69+	0.046 [0.032; 0.071]	0.052 [0.029; 0.091]	0.889	0.030 [0.017; 0.066]	0.041 [0.017; 0.073]	0.983
regulatory	0.000 [0.000; 0.002]	0.001 [0.000; 0.003]	0.866	0.000 [0.000; 0.002]	0.001 [0.000; 0.002]	1.0
CD25+	0.001 [0.000; 0.001]	0.001 [0.001; 0.001]	0.263	0.001 [0.000; 0.001]	0.001 [0.000; 0.001]	0.446

	Radiation (n=8)			No radiation (n=18)		
	Before chemotherapy	After chemotherapy	P value	Before chemotherapy	After chemotherapy	P value
<b>CD4+ T Lymphocytes</b>						
CD4+ Lymphocytes	0.486 [0.320; 0.976]	0.418 [0.185; 0.906]	0.484	0.819 [0.367; 0.802]	0.485 [0.236; 0.674]	0.145
memory	0.320 [0.206; 0.564]	0.352 [0.147; 0.587]	0.889	0.317 [0.226; 0.548]	0.297 [0.157; 0.333]	0.112
central memory	0.249 [0.120; 0.343]	0.191 [0.089; 0.353]	0.401	0.220 [0.141; 0.336]	0.157 [0.103; 0.256]	0.133
naive	0.131 [0.057; 0.378]	0.061 [0.024; 0.318]	<b>0.017</b>	0.251 [0.069; 0.330]	0.153 [0.038; 0.273]	0.446
effector memory	0.115 [0.064; 0.233]	0.166 [0.065; 0.254]	0.263	0.125 [0.065; 0.188]	0.083 [0.068; 0.145]	0.184
EMRA	0.112 [0.004; 0.015]	0.004 [0.002; 0.009]	0.069	0.005 [0.002; 0.022]	0.008 [0.002; 0.029]	0.306
HLA-DR+	0.057 [0.038; 0.071]	0.058 [0.044; 0.156]	0.263	0.058 [0.043; 0.090]	0.046 [0.035; 0.079]	0.199
CD69+	0.045 [0.026; 0.116]	0.035 [0.030; 0.107]	0.575	0.051 [0.031; 0.117]	0.035 [0.018; 0.053]	0.035
Th1	0.040 [0.018; 0.071]	0.036 [0.015; 0.067]	0.612	0.043 [0.018; 0.069]	0.022 [0.012; 0.054]	0.102
Th2	0.047 [0.028; 0.107]	0.064 [0.027; 0.103]	0.612	0.052 [0.023; 0.082]	0.034 [0.021; 0.070]	0.500
Th17	0.049 [0.026; 0.061]	0.041 [0.013; 0.113]	0.735	0.029 [0.019; 0.048]	0.029 [0.021; 0.044]	0.913
regulatory	0.024 [0.016; 0.050]	0.012 [0.010; 0.017]	0.263	0.027 [0.014; 0.047]	0.014 [0.008; 0.051]	0.184
CD25+	0.007 [0.004; 0.011]	0.008 [0.007; 0.012]	0.208	0.009 [0.005; 0.016]	0.010 [0.003; 0.016]	0.777
CD4/CD8	2.108 [1.438; 3.297]	2.024 [1.642; 3.344]	0.889	2.973 [1.758; 4.677]	1.579 [1.117; 3.627]	0.078

	Radiation (n=8)			No radiation (n=18)		
	Before chemotherapy	After chemotherapy	P value	Before chemotherapy	After chemotherapy	P value
<b>NK cells</b>						
NK Cells	0.152 [0.080; 0.273]	0.119 [0.038; 0.258]	0.263	0.129 [0.093; 0.240]	0.127 [0.093; 0.204]	0.943
CD56+CD16+	0.025 [0.015; 0.083]	0.016 [0.009; 0.050]	0.123	0.039 [0.023; 0.083]	0.046 [0.016; 0.079]	0.379
CD56bright CD16dim	0.002 [0.000; 0.006]	0.003 [0.001; 0.004]	1.0	0.003 [0.001; 0.007]	0.004 [0.001; 0.008]	0.352
CD56dim CD16bright	0.005 [0.002; 0.022]	0.007 [0.001; 0.009]	0.093	0.004 [0.002; 0.017]	0.006 [0.002; 0.010]	0.606
NK/T	0.041 [0.021; 0.113]	0.024 [0.014; 0.063]	0.161	0.057 [0.030; 0.098]	0.061 [0.024; 0.092]	0.943

**F) Infection vs. No Infection**

	Infection (n=9)			No infection (n=17)		
	Before chemotherapy	After chemotherapy	P value	Before chemotherapy	After chemotherapy	P value
<b>B Lymphocytes</b>						
B Lymphocytes	0.073 [0.020; 0.162]	0.063 [0.014; 0.112]	0.463	0.079 [0.044; 0.168]	0.046 [0.029; 0.088]	<b>0.002</b>
naive	0.054 [0.010; 0.120]	0.048 [0.008; 0.070]	0.345	0.045 [0.021; 0.116]	0.023 [0.014; 0.047]	<b>0.001</b>
memory	0.003 [0.002; 0.004]	0.002 [0.001; 0.003]	0.173	0.006 [0.002; 0.012]	0.003 [0.001; 0.004]	<b>0.002</b>
class switched	0.009 [0.004; 0.013]	0.004 [0.002; 0.010]	0.600	0.015 [0.006; 0.026]	0.006 [0.003; 0.014]	<b>0.009</b>
transitory	0.001 [0.000; 0.007]	0.000 [0.000; 0.014]	0.917	0.002 [0.000; 0.004]	0.005 [0.000; 0.002]	0.148
<b>CD8+ T Lymphocytes</b>						
CD8+ Lymphocytes	0.178 [0.087; 0.344]	0.220 [0.121; 0.368]	0.079	0.241 [0.168; 0.378]	0.272 [0.113; 0.323]	0.235
CD4+CD8+	0.002 [0.001; 0.006]	0.003 [0.001; 0.004]	0.401	0.008 [0.002; 0.017]	0.005 [0.002; 0.014]	0.554
memory	0.044 [0.035; 0.071]	0.079 [0.039; 0.134]	0.086	0.104 [0.052; 0.141]	0.093 [0.033; 0.140]	0.868
central memory	0.021 [0.012; 0.031]	0.025 [0.016; 0.032]	0.314	0.045 [0.018; 0.080]	0.027 [0.015; 0.057]	0.028
naive	0.047 [0.010; 0.095]	0.035 [0.013; 0.105]	0.953	0.042 [0.022; 0.093]	0.034 [0.024; 0.067]	0.287
effector memory	0.045 [0.028; 0.078]	0.063 [0.033; 0.124]	0.374	0.064 [0.044; 0.128]	0.068 [0.029; 0.112]	0.723
EMRA	0.024 [0.022; 0.202]	0.068 [0.033; 0.154]	0.767	0.062 [0.036; 0.113]	0.068 [0.031; 0.116]	0.981
early	0.078 [0.044; 0.135]	0.072 [0.053; 0.183]	0.678	0.137 [0.045; 0.179]	0.096 [0.043; 0.186]	0.356
intermediate	0.010 [0.004; 0.019]	0.017 [0.011; 0.042]	0.066	0.011 [0.008; 0.020]	0.013 [0.007; 0.023]	0.523
late	0.034 [0.022; 0.075]	0.096 [0.024; 0.131]	0.314	0.069 [0.026; 0.149]	0.052 [0.024; 0.134]	0.193
exhausted	0.033 [0.023; 0.108]	0.104 [0.031; 0.141]	0.767	0.056 [0.042; 0.104]	0.059 [0.037; 0.010]	0.435
terminal effector	0.026 [0.017; 0.048]	0.046 [0.015; 0.094]	0.678	0.036 [0.022; 0.129]	0.027 [0.014; 0.106]	0.076
HLA-DR+	0.042 [0.014; 0.152]	0.108 [0.050; 0.178]	0.260	0.092 [0.042; 0.133]	0.068 [0.031; 0.147]	0.653
CD69+	0.022 [0.013; 0.053]	0.045 [0.016; 0.076]	0.139	0.041 [0.028; 0.145]	0.040 [0.021; 0.100]	0.332
regulatory	0.001 [0.000; 0.001]	0.001 [0.000; 0.002]	0.889	0.000 [0.000; 0.002]	0.001 [0.000; 0.002]	0.778
CD25+	0.000 [0.000; 0.001]	0.001 [0.000; 0.001]	0.314	0.001 [0.000; 0.002]	0.001 [0.003; 0.001]	0.523
<b>CD4+ T Lymphocytes</b>						
CD4+ Lymphocytes	0.417 [0.269; 0.684]	0.374 [0.174; 1.111]	0.237	0.679 [0.355; 1.025]	0.549 [0.308; 0.691]	0.543
memory	0.282 [0.149; 0.382]	0.228 [0.147; 0.700]	0.859	0.395 [0.229; 0.628]	0.322 [0.223; 0.376]	0.049
central memory	0.185 [0.105; 0.255]	0.140 [0.071; 0.417]	0.859	0.268 [0.138; 0.421]	0.202 [0.115; 0.279]	0.028
naive	0.182 [0.048; 0.280]	0.091 [0.028; 0.281]	0.314	0.244 [0.072; 0.354]	0.116 [0.045; 0.285]	0.124
effector memory	0.106 [0.051; 0.150]	0.084 [0.067; 0.297]	0.594	0.142 [0.070; 0.223]	0.112 [0.067; 0.200]	0.177
EMRA	0.006 [0.001; 0.025]	0.003 [0.001; 0.012]	0.953	0.008 [0.002; 0.018]	0.005 [0.003; 0.022]	0.868
HLA-DR+	0.053 [0.025; 0.068]	0.067 [0.034; 0.168]	0.515	0.068 [0.045; 0.092]	0.046 [0.039; 0.086]	0.193
CD69+	0.035 [0.018; 0.109]	0.035 [0.023; 0.075]	0.441	0.050 [0.033; 0.117]	0.034 [0.017; 0.058]	0.044
Th1	0.042 [0.013; 0.070]	0.037 [0.009; 0.077]	0.889	0.042 [0.019; 0.068]	0.027 [0.017; 0.056]	0.049

Th2	0.031 [0.016; 0.063]	0.024 [0.021; 0.121]	0.208	0.062 [0.029; 0.102]	0.062 [0.028; 0.078]	0.210
Th17	0.036 [0.022; 0.054]	0.031 [0.024; 0.082]	0.327	0.031 [0.019; 0.054]	0.028 [0.016; 0.053]	0.381
regulatory	0.042 [0.014; 0.051]	0.012 [0.009; 0.025]	0.110	0.024 [0.016; 0.036]	0.013 [0.009; 0.042]	0.287
CD25+	0.008 [0.002; 0.015]	0.008 [0.003; 0.018]	0.214	0.008 [0.006; 0.014]	0.009 [0.006; 0.013]	0.723
CD4/CD8	2.164 [1.772; 4.038]	1.558 [1.200; 3.254]	0.214	2.868 [1.522; 3.885]	1.932 [1.343; 3.489]	0.266
	<b>Infection (n=9)</b>			<b>No infection (n=17)</b>		
	<b>Before chemotherapy</b>	<b>After chemotherapy</b>	<b>P value</b>	<b>Before chemotherapy</b>	<b>After chemotherapy</b>	<b>P value</b>
<b>NK cells</b>						
NK Cells	0.112 [0.078; 0.163]	0.126 [0.051; 0.189]	0.997	0.153 [0.114; 0.297]	0.128 [0.073; 0.258]	0.237
CD56+CD16+	0.041 [0.025; 0.083]	0.042 [0.014; 0.064]	0.327	0.029 [0.015; 0.089]	0.043 [0.012; 0.079]	0.148
CD56bright CD16dim	0.003 [0.002; 0.006]	0.003 [0.003; 0.005]	0.889	0.002 [0.000; 0.007]	0.002 [0.001; 0.008]	0.569
CD56dim CD16bright	0.005 [0.003; 0.026]	0.007 [0.001; 0.013]	0.779	0.004 [0.002; 0.018]	0.006 [0.002; 0.008]	0.569
NK/T	0.047 [0.035; 0.113]	0.055 [0.018; 0.078]	0.723	0.039 [0.022; 0.098]	0.053 [0.019; 0.084]	0.134

A) Men vs. women B) G-CSF vs. no G-CSF C) Platinum vs. no platinum D) Resmission status E) Radiation vs. no radiation F) Infection vs. no infection  
 Numbers are median values/ml and interquartile ranges in square brackets.  $p < 0.022$  = significant. *n.s.* not significant; *EMRA* effector memory RA+  
*CR* Complete remission, *G-CSF* Granulocyte-colony stimulating factor, *PD* Progressive disease, *PR* Partial remission, *SD* Stable disease