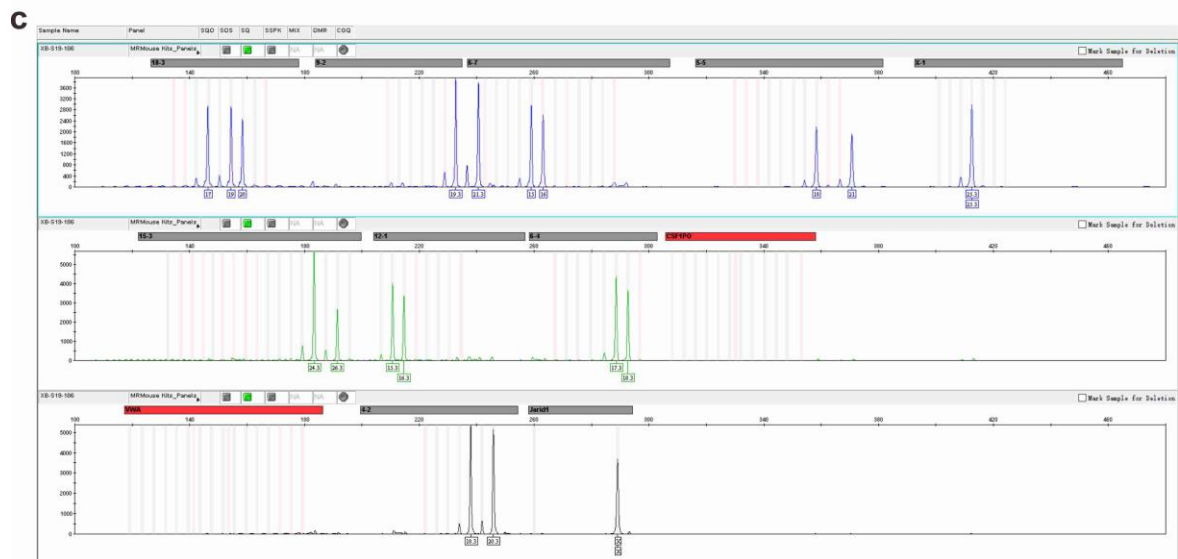
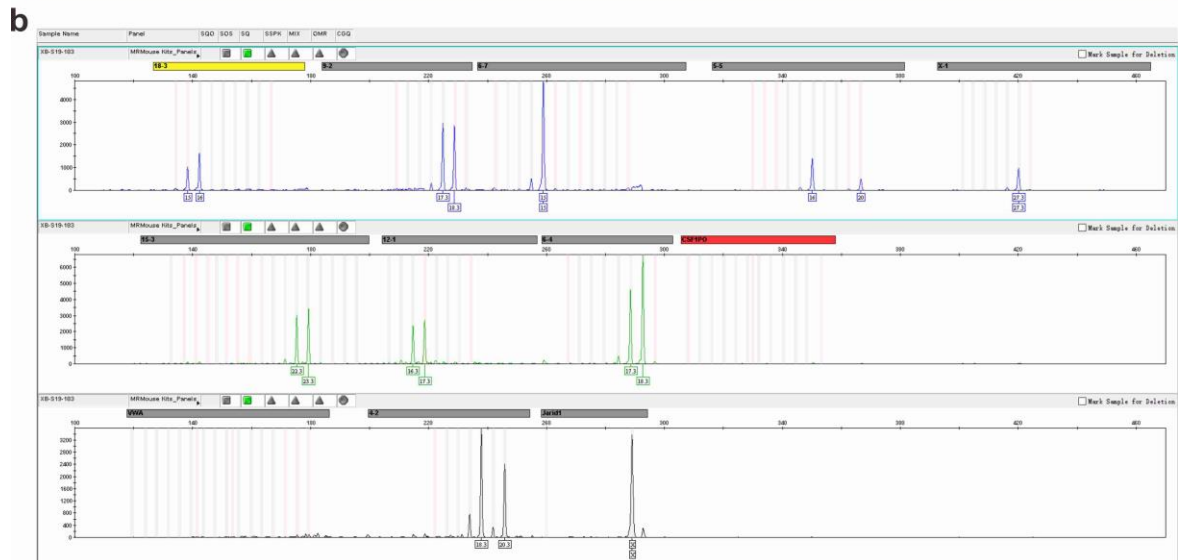
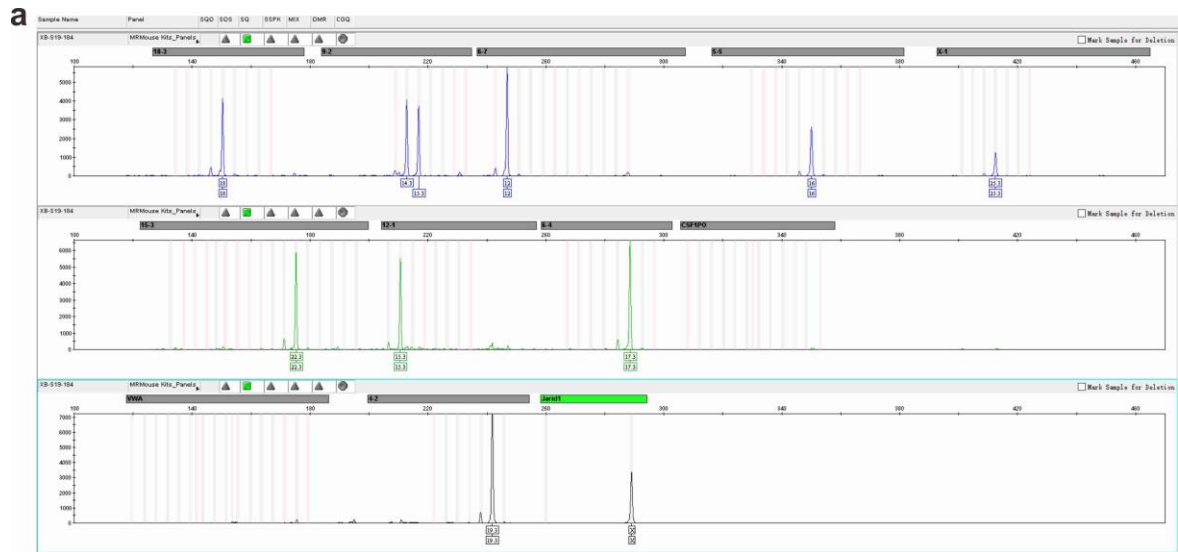


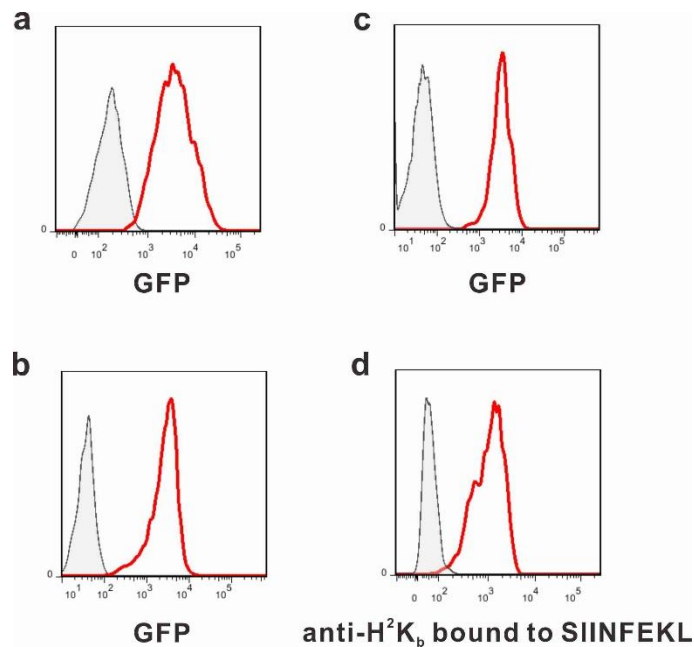
Supplementary Figure 1. MHC-I expression detection on different tumor cell lines.

Grey filled histograms show isotype controls, while red solid lines show the expression of H₂K^b on indicated tumor cell lines.



Supplementary Figure 2. STR profiles of murine cell lines.

PCR amplification was performed using STR Multi-amplification Kit (Mouse STR v2.0) and PCR products were assayed with 3730xl DNA Analyzer (Applied Biosystems®). STR profiles of murine Yac-1 (a), B16-F10 (b) and EL4 (c) were shown.



Supplementary Figure 3. GFP/OVA₂₅₇₋₂₆₄ Expression of transfected murine cell lines.

a. GFP expression on B16-GFP cells (red line) and B16-F10 control cells (grey histogram). *b.* GFP expression on EL4-GFP cells (red line) and EL4 control cells (grey histogram). *c.* GFP expression on EL4-OVA8-GFP cells (red line) and EL4 control cells (grey histogram). *d.* Detection of OVA₂₅₇₋₂₆₄ expression using anti-H²K_b bound to SIINFEKL on EL4-OVA8-GFP cells (red line) and EL4-GFP (grey histogram) cells.