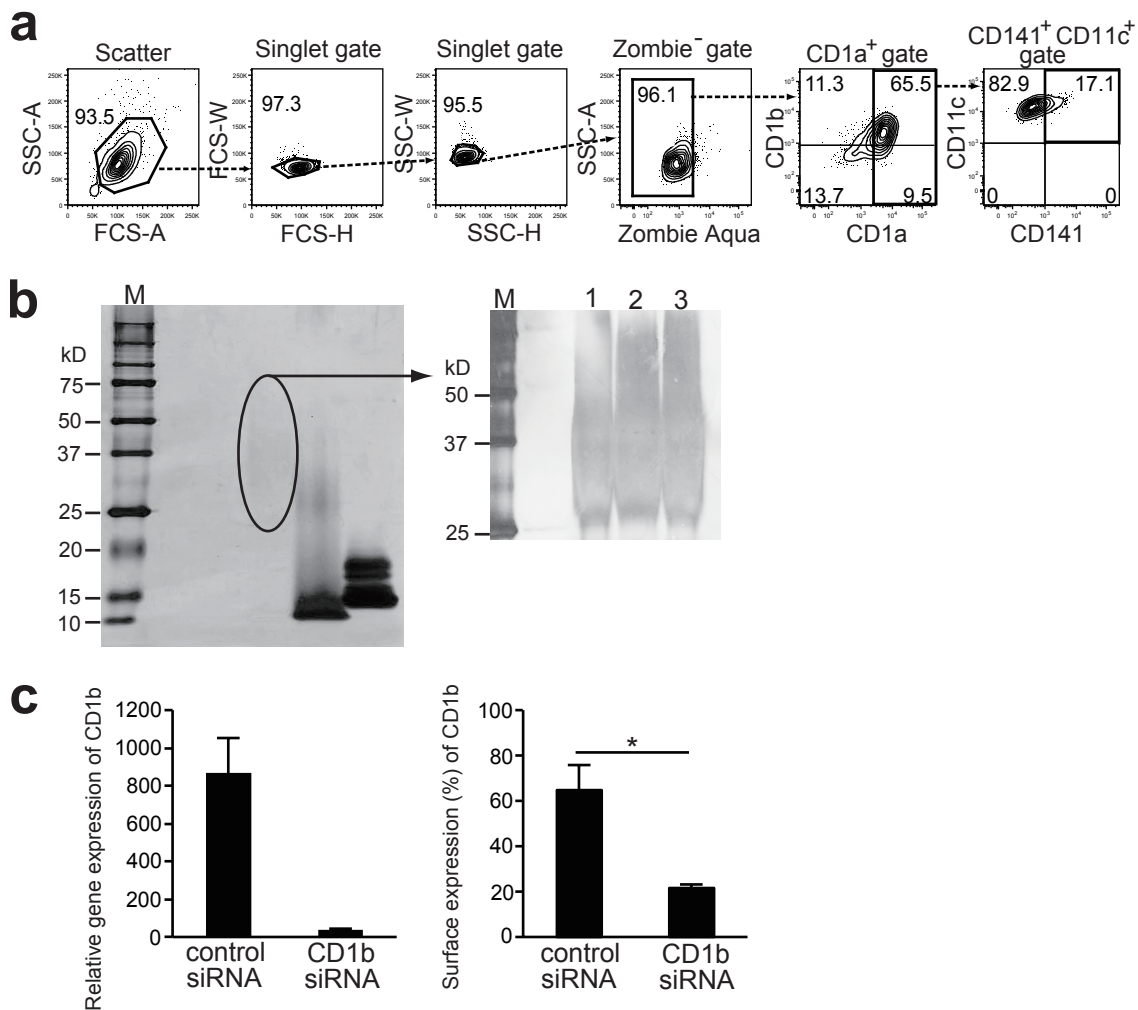


Supplementary Fig.



(a) Representative gating strategies of flow cytometry for the detection of DCs.

DCs were identified as Zombie⁻, CD1a⁺, CD1b⁺, CD141⁺, and CD11c⁺.

(b) Temperature-dependency of protein detection in LAM by silver stain SDS-PAGE gel. Lane1: 100°C, 5min, Lane2: 70°C, 30 min, Lane3: 37°C, 2 hours.

Lift figure is the same as Fig. 2a.

(c) Suppression of CD1b expression on MDDCs by using CD1b-siRNA.

The left shows gene expression by real-time PCR and the right shows surface expression by flow cytometry. Data are shown as the mean \pm S.D. of $n=4$ samples per measurement. * $p < 0.05$; one-way ANOVA analysis followed by Bonferroni post-tests to evaluate statistical differences.