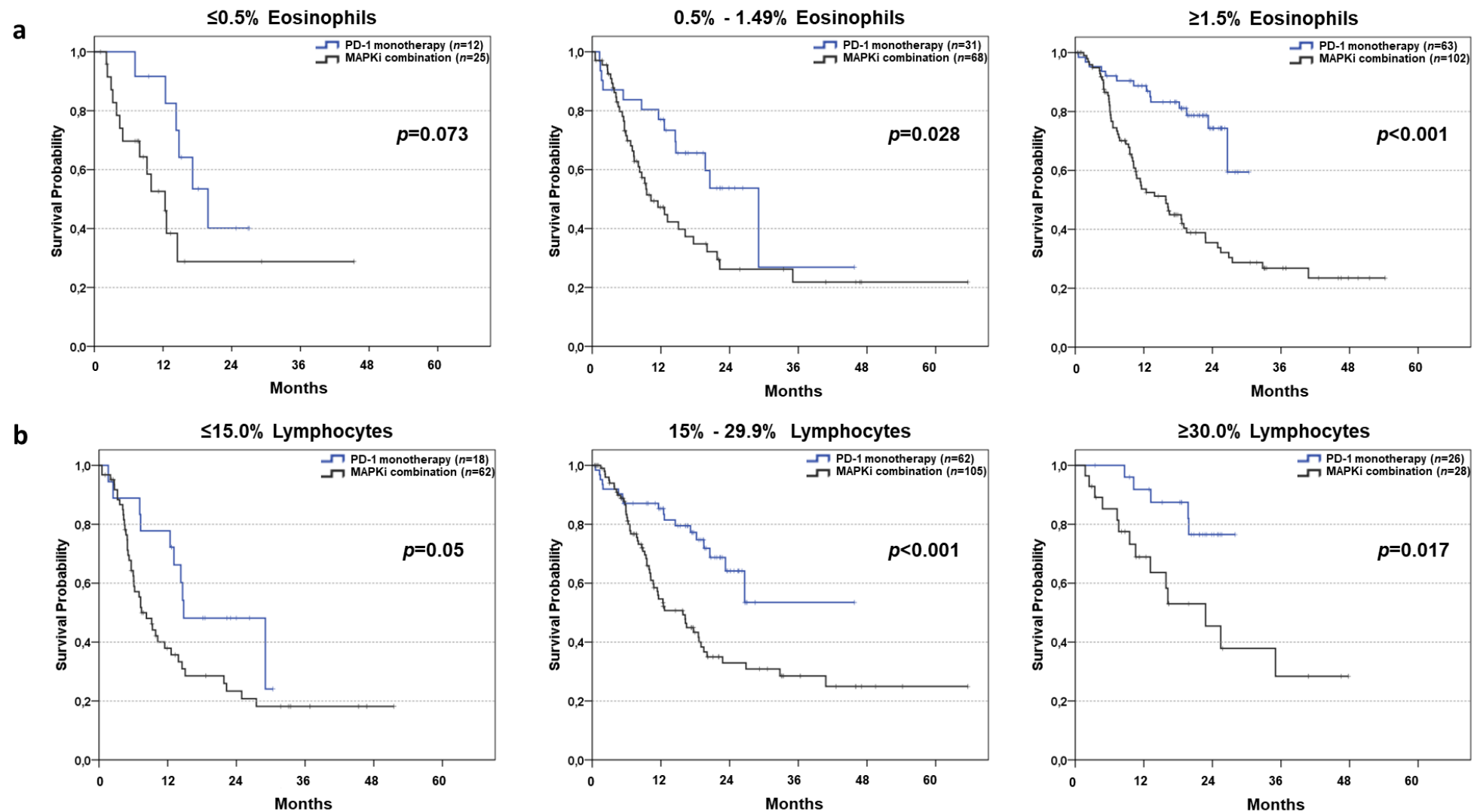


Supplementary Figure 1



Supplementary Figure 1: Subgroup analyses of overall survival based on relative frequency of different immune populations in the peripheral blood. (a) Kaplan-Meier curves for OS are shown for BRAF mutated melanoma patients with ≤0.5% eosinophils (a, left), 0.5% - 1.49% eosinophils (a, middle), or ≥1.5% eosinophils (a, right) circulating in the peripheral blood of patients treated with PD-1 blocking antibodies or dual MAPKi. (b) Kaplan-Meier curves for OS are shown for BRAF mutated melanoma patients with ≤15.0% lymphocytes (b, left), 15% - 29.9% lymphocytes (b, middle), or ≥30.0% lymphocytes (b, right) circulating in the peripheral blood of patients treated with PD-1 blocking antibodies or dual MAPKi. Vertical lines indicate censored values: p -values were calculated by log rank testing.