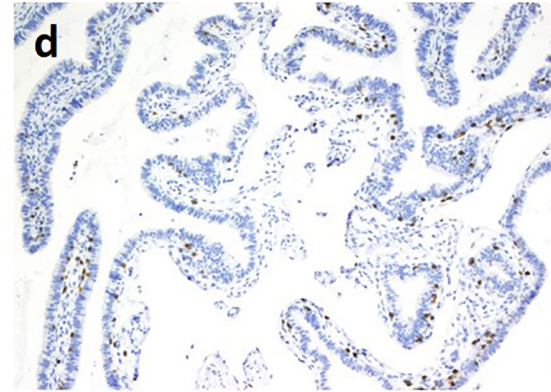
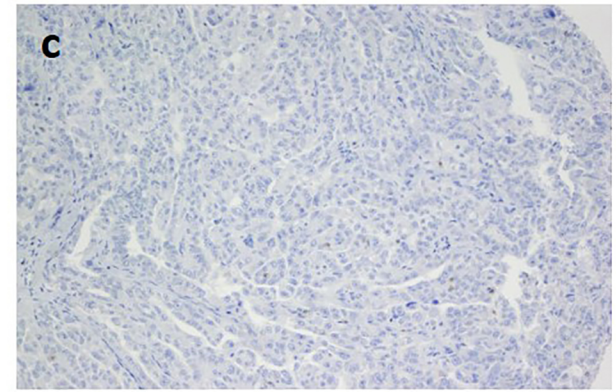
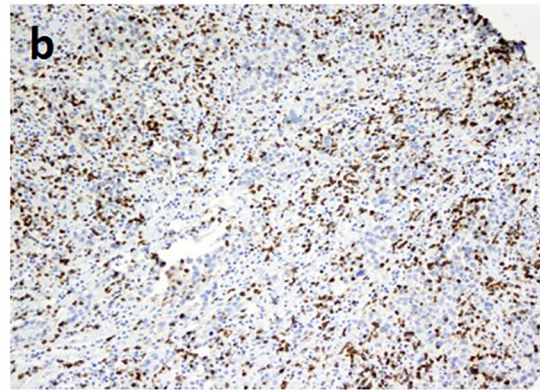
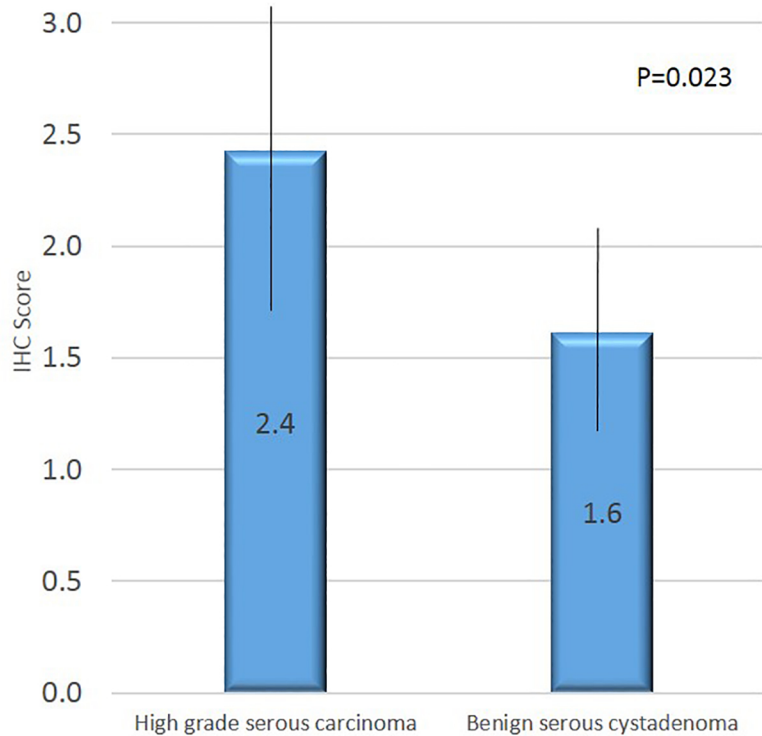


a

LCK Expression by IHC Staining



Supplemental Figure 1: LCK Expression in Benign and Malignant Samples

(a) LCK expression levels by immunohistochemistry staining score within tissue microarray (TMA). Staining score defined as: 0=none, 1=low, 2=medium/moderate, 3 = high. (b-d) Representative examples of varying LCK expression by immunohistochemistry. b: LCK high expression in high grade serous ovarian cancer. c: Low LCK expression in high grade serous ovarian cancer. d: Moderate LCK expression in normal fallopian tube.