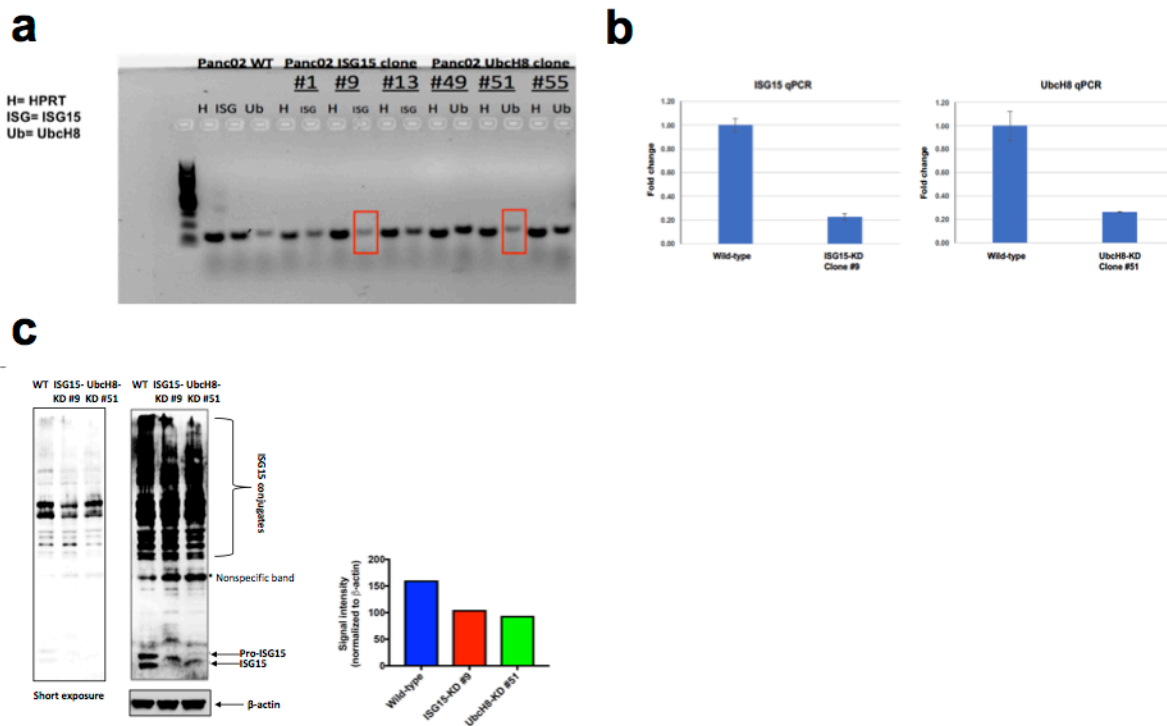


**Supplemental Figure 1. ISG15 knockdown decreases pancreatic ductal adenocarcinoma growth.** **a** ISG15 protein expression in various PDAC mouse and human cell lines detected by Western blot using ISG15 antibody. **b** ISG15 knockdown significantly decreases PDAC cell growth *in vitro*. **c** ISG15 knockdown significantly decreases PDAC tumor growth, \*p-value= 0.031 and **d** tumor weight, \*p-value= 0.029.



**Supplemental Figure 2. Characterization of Panc02 ISG15 and Ubch8 knockdown cells.** **a** RT-PCR analysis of Panc02 ISG15 and Ubch8 knockdown clones using ISG15 and Ubch8 primers. **b** Quantitative PCR analysis of ISG15 knockdown clone #9 and Ubch8 knockdown clone #51 using the same primers used in the RT-PCR experiment. **c** Western blot analysis of ISG15 expression in ISG15 and Ubch8 knockdown clones using an anti-ISG15 antibody. *Right panel.* Normalized ISG15 conjugates expression levels.