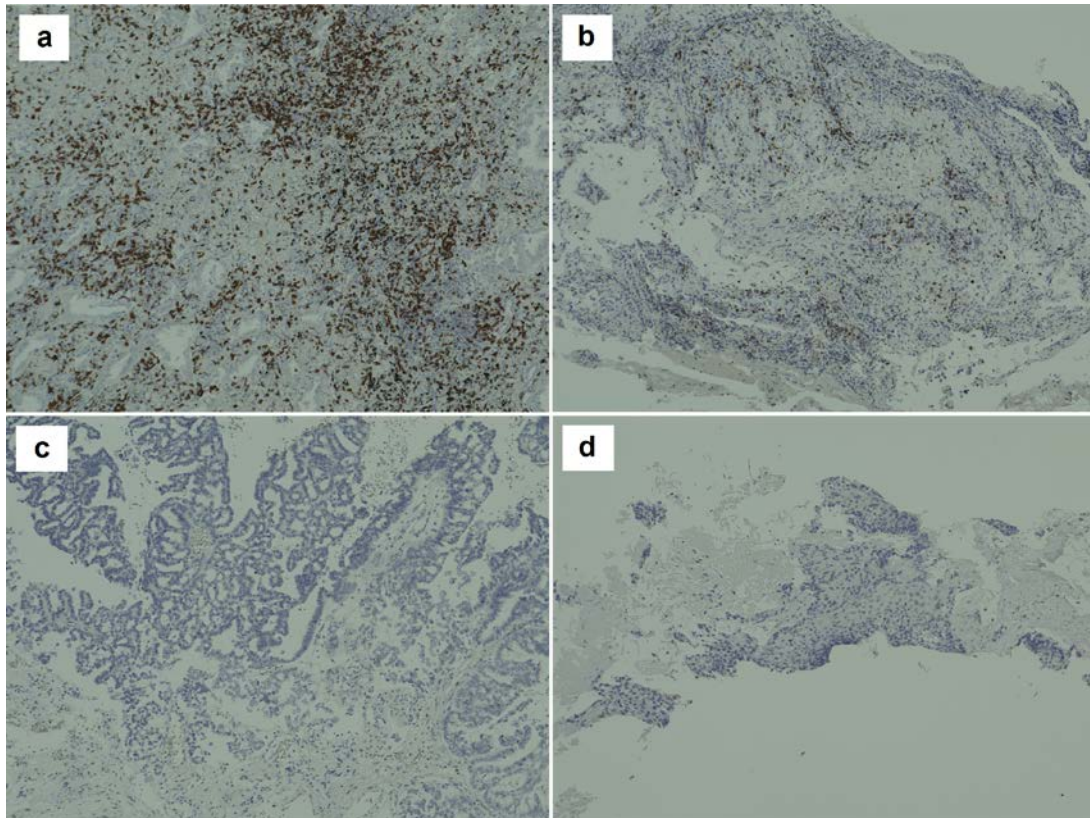
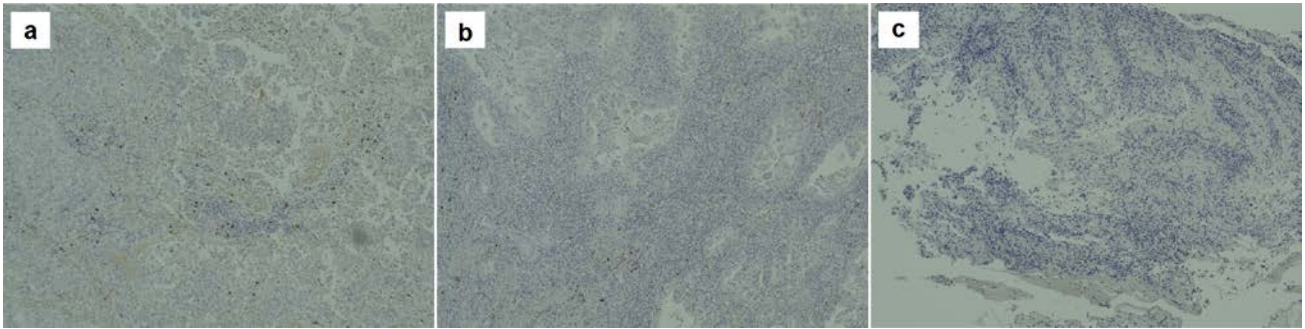


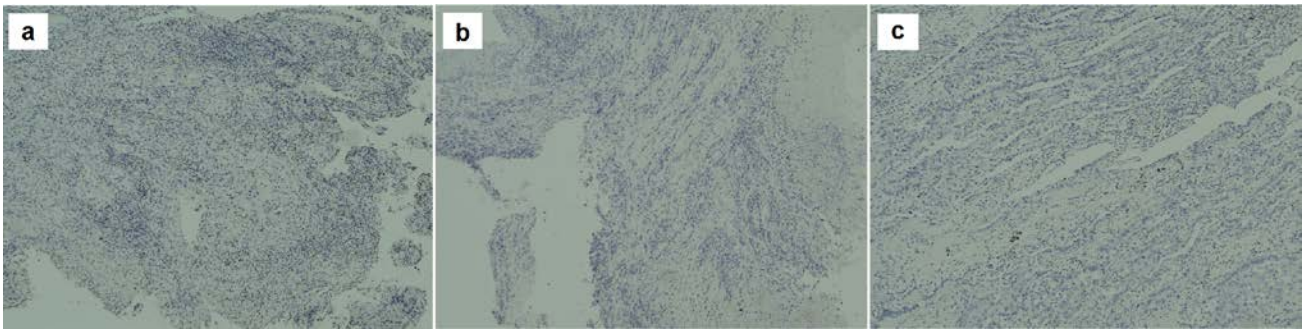
**Supplementary Figure 1. Representative images of CD4<sup>+</sup> immune cells in tumors.** CD4 expression was scored as percentage of observed area, as described in Methods. **(a)**, 3+: **(b)**, 2+: **(c)**, 1+: **(d)**, 0.



**Supplementary Figure 2. Representative images of CD8<sup>+</sup> immune cells in tumors.** CD4 expression was scored as percentage of observed area, as described in Methods. **(a)**, 3+: **(b)**, 2+: **(c)**, 1+: **(d)**, 0.



**Supplementary Figure 3. Representative images of CD56<sup>+</sup> immune cells in tumors.** CD56 expression was scored as percentage of observed area, as described in Methods. **(a)**, 2+; **(b)**, 1+; and **(c)**, 0



**Supplementary Figure 4. Representative images of PD-1<sup>+</sup> immune cells in tumors.** PD-1 expression was scored as percentage of observed area, as described in Methods. **(a)**, 2+; **(b)**, 1+; and **(c)**, 0