

Figure S1 Individual graphs depicting expression of exon 4-enriched PD-L1 in various cancer and normal tissue types. a) Individual graphs per cancer type of the expression of PD-L1 exon 4/5 expression ratio versus total PD-L1 expression from Fig. 2a). Cancer type abbreviations are defined in the materials and methods section. b) PD-L1 exon 4/5 ratio expression versus total PD-L1 expression in normal tissue from Fig. 2a

a)

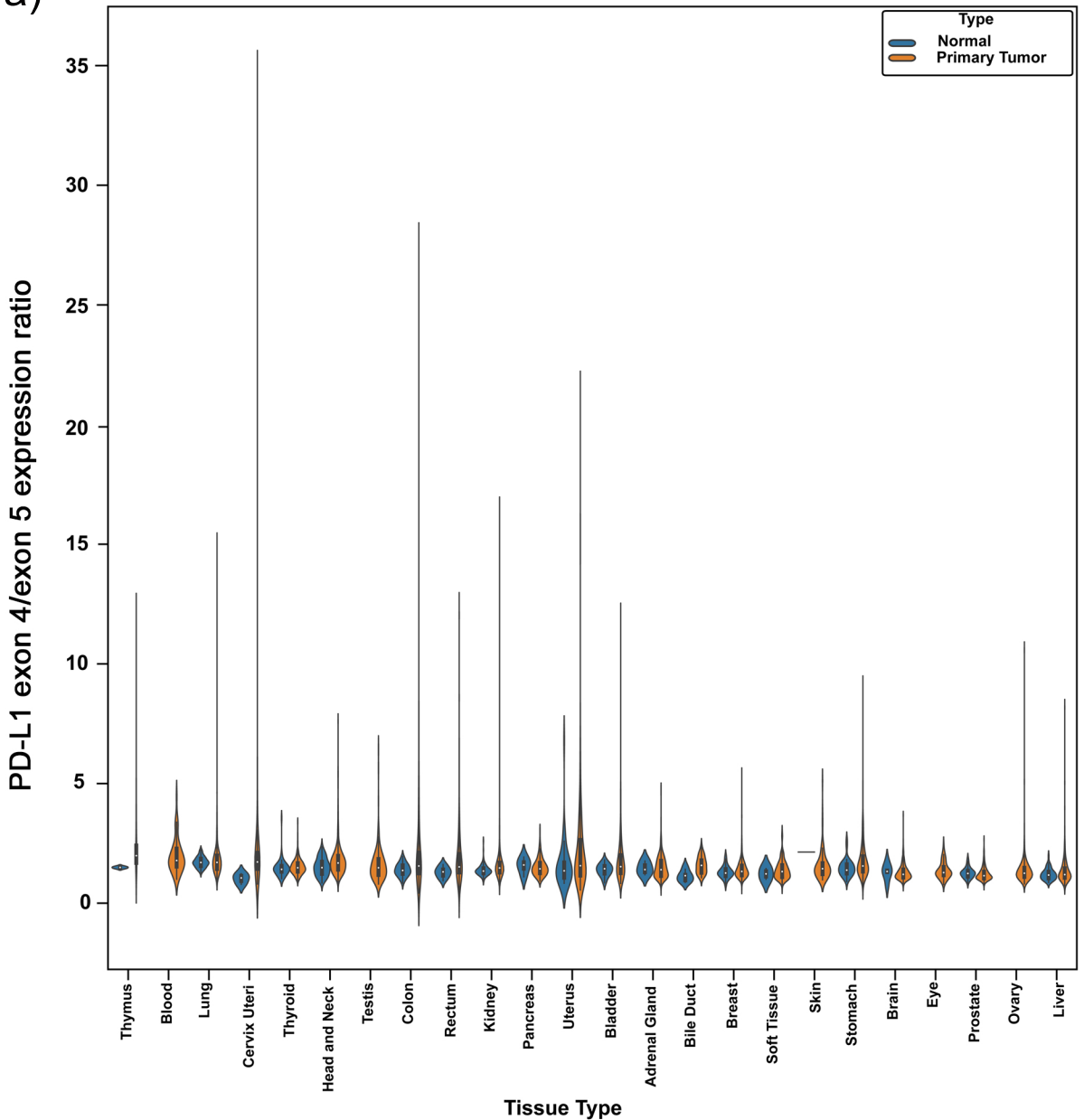


Figure S2 Violin plots depicting the PD-L1 exon 4/5 expression ratio for each tumor type with data from corresponding normal tissue

a)

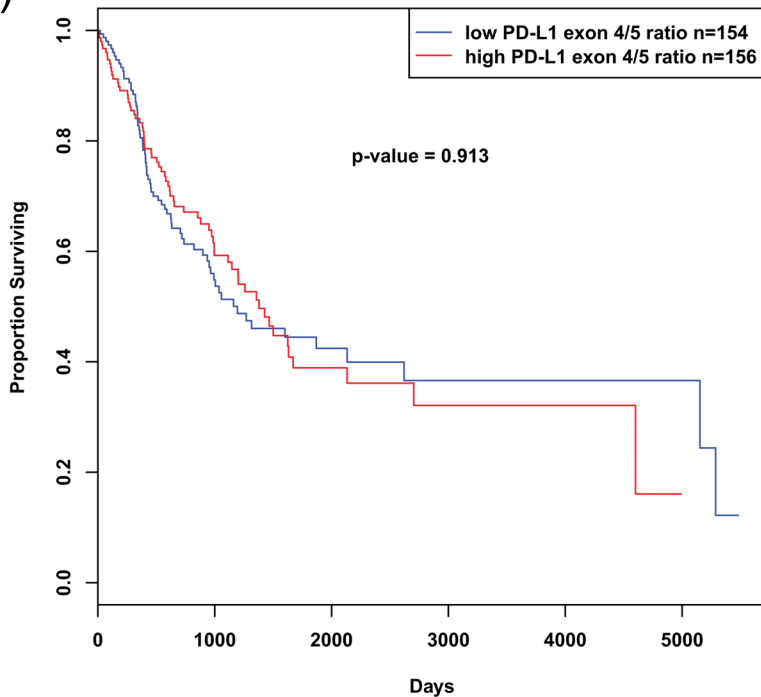


Figure S3 Kaplan Meyer curves showing overall survival for patients with all tumor types in the TCGA dataset broken up by high and low exon 4-enriched PD-L1 expression. Exon 4-enriched PD-L1 mRNA expression is not predictive of clinical outcomes in cancer patients. Kaplan-Meier survival analyses of patients expressing high levels of exon 4-enriched PD-L1 mRNA (red line) do not exhibit a poorer outcome compared to patients expressing low levels of PD-L1 mRNA (gray blue)

a)

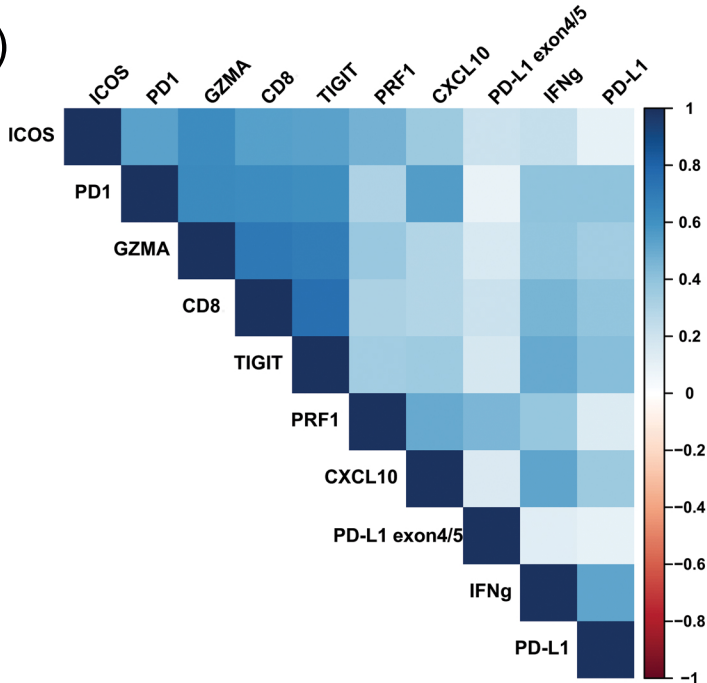


Figure S4 Correlation between PD-L1 exon 4/5 ratio expression and T cell genes in all tumor types of the TCGA dataset. Heatmap of a pairwise Spearman correlation analysis of expression of PD-L1 exon 4/5 expression ratio and T cell genes for all TCGA

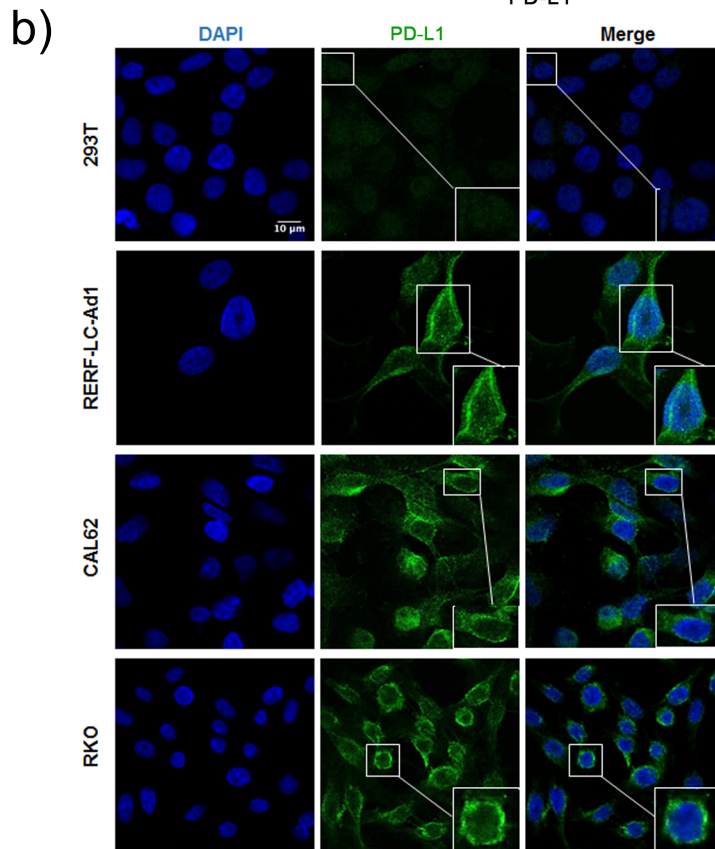
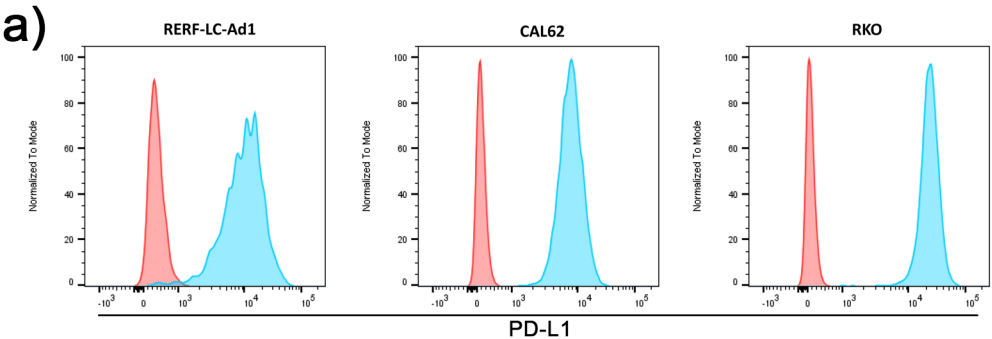
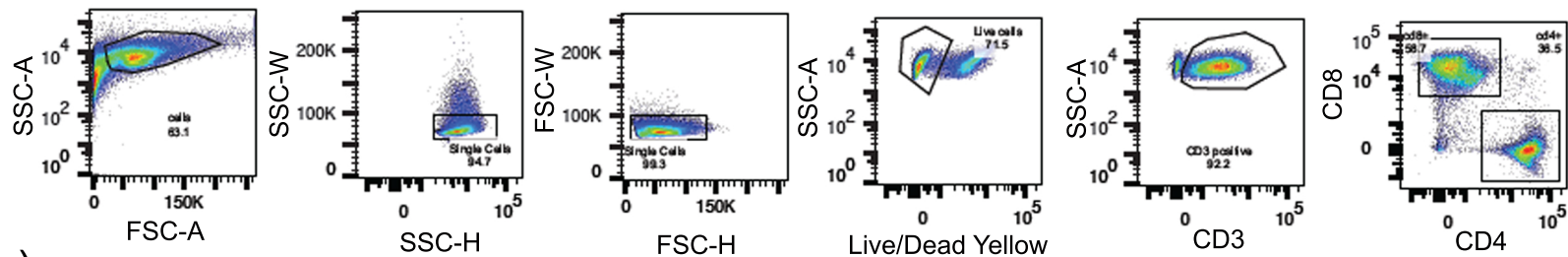


Figure S5. Characterization of PD-L1 expression in cell lines.
a) Cells were stained for surface PD-L1 (APC) and analyzed by flow cytometry. Isotype control staining is shown in red, PD-L1 staining is shown in blue. **b)** Cells were stained for PD-L1 (green) and DAPI for nuclei (blue) and imaged with a confocal microscope. Magnified cells are shown in insets. A 10 μm scale bar is shown in the upper left panel

a)



b)

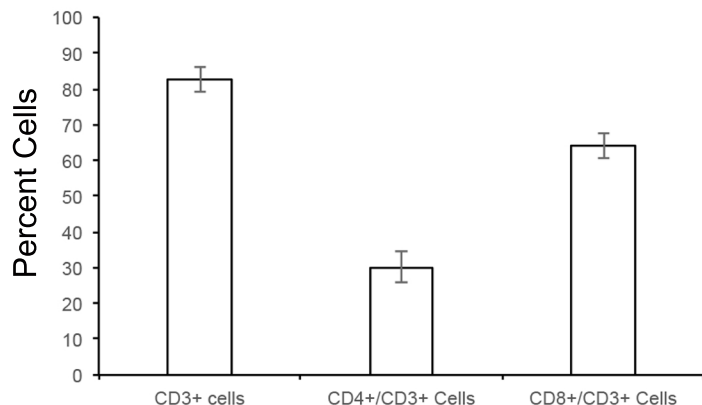
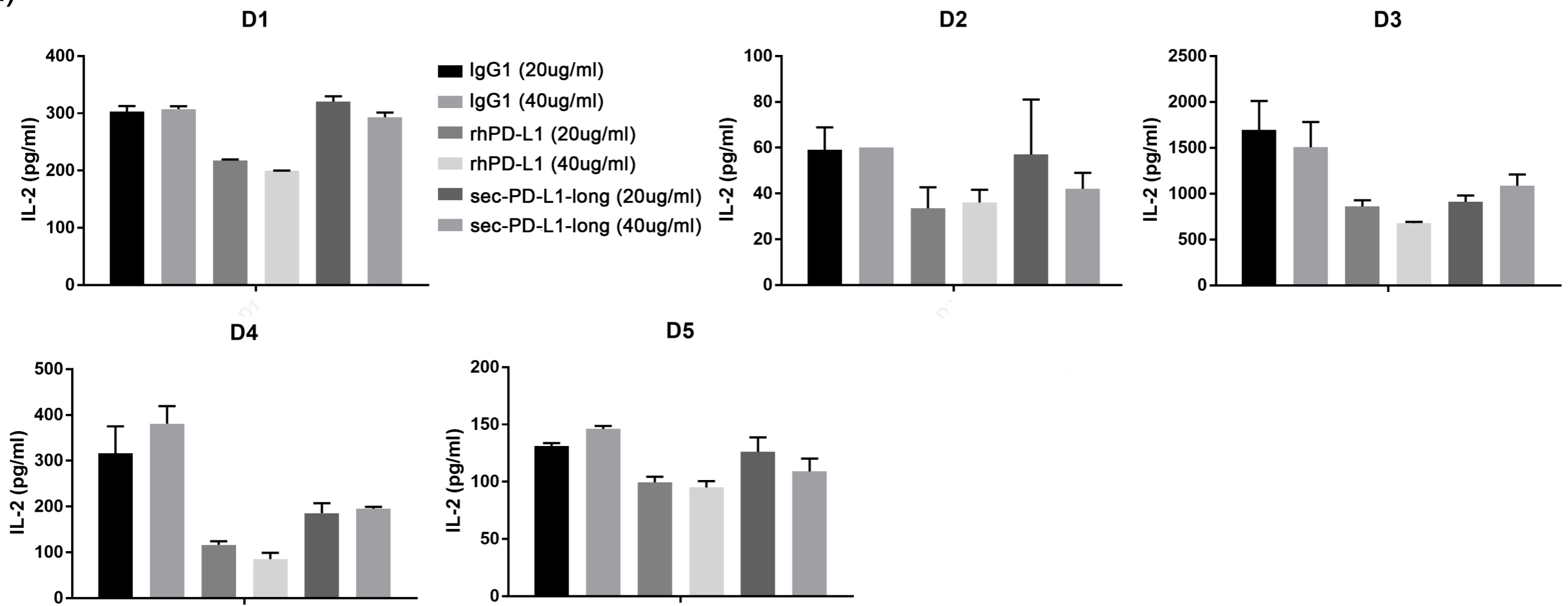


Figure S6 T cell marker characterization of T cell blasts. T cell blasts were stained for CD3, CD4, CD8 and with LIVE/DEAD yellow stain to exclude dead cells. Between 20,000 and 50,000 events were recorded. **a)** Representative gating used for analysis of CD3, CD4 and CD8 positivity is shown. **b)** The percent of CD3, CD4 and CD8 positive single live cells is graphed, where the mean and SEM are plotted. Data is from 4 healthy donors. FSC- forward scatter; SSC- side scatter; A-area; H-height

a)



b)

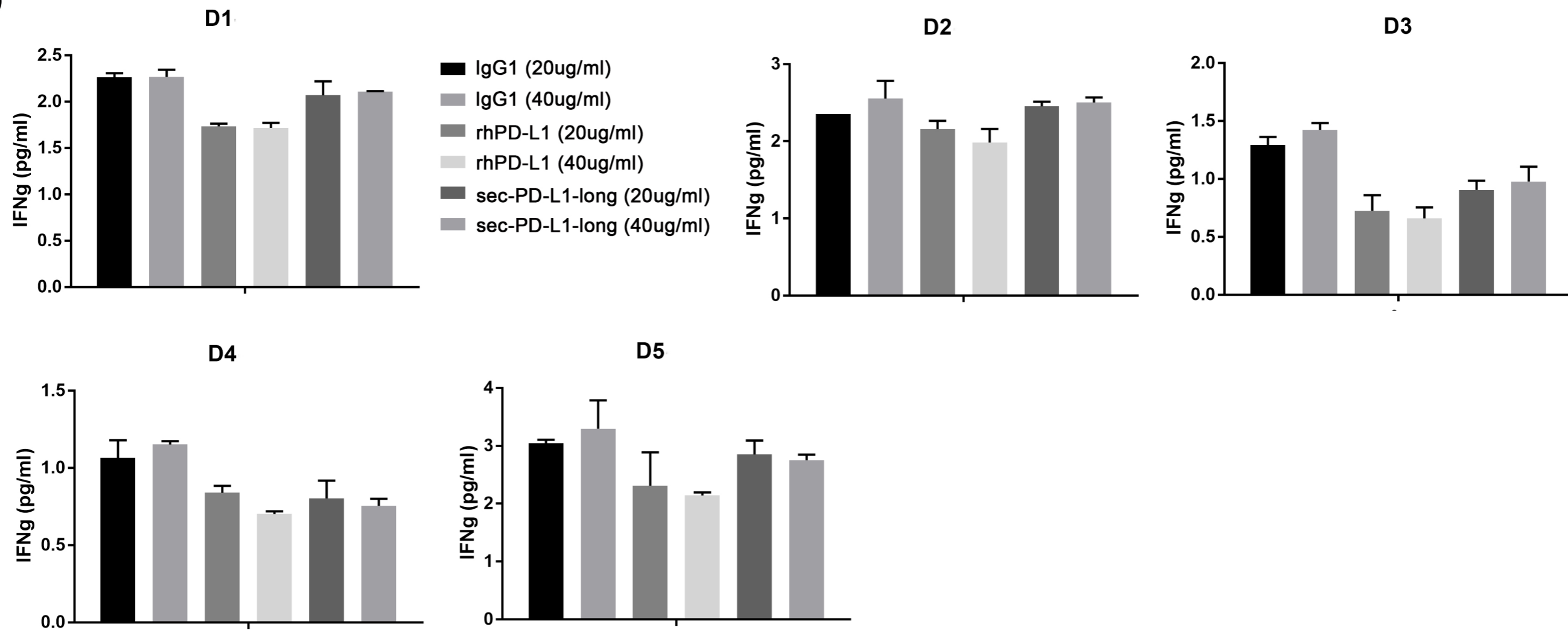


Figure S7 Raw IL2 and IFNg levels. The raw a) IL2 and b) IFNg levels in pg/ml per donor corresponding to Fig. 4c and Fig. 4d, respectively