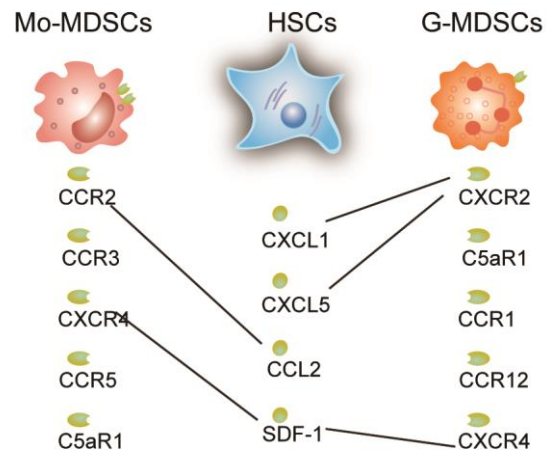


Supplementary Table 1

Mouse chemokine array coordinates

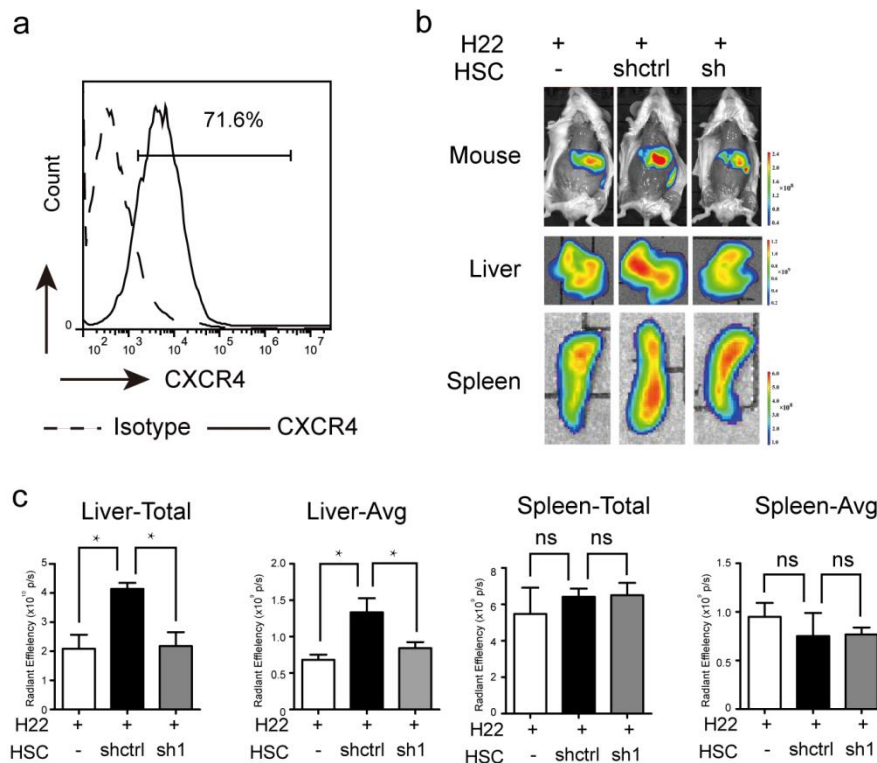
Coordinate	Analyte/Control	Entrez ID	Gene	Alternate Nomenclature
A1, A2, A19, A20	Reference Spots	N/A		RS
B3, B4	6Ckine	18829		CCL21, SLC, Exodus-2
B5, B6	BLC	55985		CXCL13, BCA-1
B7, B8	C10	20305		CCL6, MRP-1
B9, B10	Component C5/C5a	15139		C5/C5a
B11, B12	CCL28	56838		MEC
B13, B14	Chemerin	71660		RARRES2
B15, B16	CTACK	20301		CCL27, ALP, ILC, ESkin
B17, B18	CXCL16	66102		SRPSOX
C3, C4	Eotaxin	20292		CCL11
C5, C6	Fractalkine	20312		CX3CL1
C7, C8	IL-16	16170		-
C9, C10	IP-10	15945		CXCL10, CRG-2, C7
C11, C12	I-TAC	56066		CXCL11, H174, SCYB9B
C13, C14	JE	20296		CCL2, MCP-1
C15, C16	KC	14825		CXCL1
C17, C18	LIX	20311		CXCL5, GCP-2, ENA-78
D3, D4	MCP-2	20307		CCL8, HC14
D5, D6	MCP-5	20293		CCL12
D7, D8	MDC	20299		CCL22, ABCD-1
D9, D10	MIG	17329		CXCL9, CRG-10, CMK
D11, D12	MIP-1 α/β (pan)	20302/20303		CCL3/CCL4
D13, D14	MIP-1 γ	20308		CCL9/10, CCF18, MRP-2
D15, D16	MIP-2	20310		CXCL2, GRO β , GRO2, CINC-3
D17, D18	RANTES	20304		CCL5, SISd
E3, E4	SDF-1	20315		CXCL12, PBSF
E5, E6	Complement Factor D (Sample Control)*	11537		Adipsin, DF, Adn
E7, E8	gp130 (Sample Control)*	16195		IL-6ST, CD130
E9, E10	HSP60 (Sample Control)*	15510		Hspd1
E11, E12	Negative Control	N/A		Control (-)
F1, F2	Reference Spots	N/A		RS

Supplementary Figure 1



Supplementary Fig. 1 Potential involvement of chemokine-chemokine receptor in MDSC migration induced by HSCs.

Supplementary Figure 2



Supplementary Fig. 2 The effect of HSCs on RAW 264.7 cell migration *in vivo*. **a** CXCR4 expression on RAW 264.7 cells detected by flow cytometry. **b** Shown are representative mice, livers and spleens. The mice were given an intrahepatic injection of 1×10^6 H22 cells, H22 cells plus 2×10^5 activated shctrl HSCs (shctrl) or SDF-1-knocked down HSCs (sh). After transfer of DiR-labeled RAW 264.7 cells, the signal was evaluated by IVIS. **c** Total and average signal intensity in the livers and spleens of tumor-bearing mice is presented.