

Cancer Immunology, Immunotherapy (submitted in 2018)

Julian Plaumann et al.

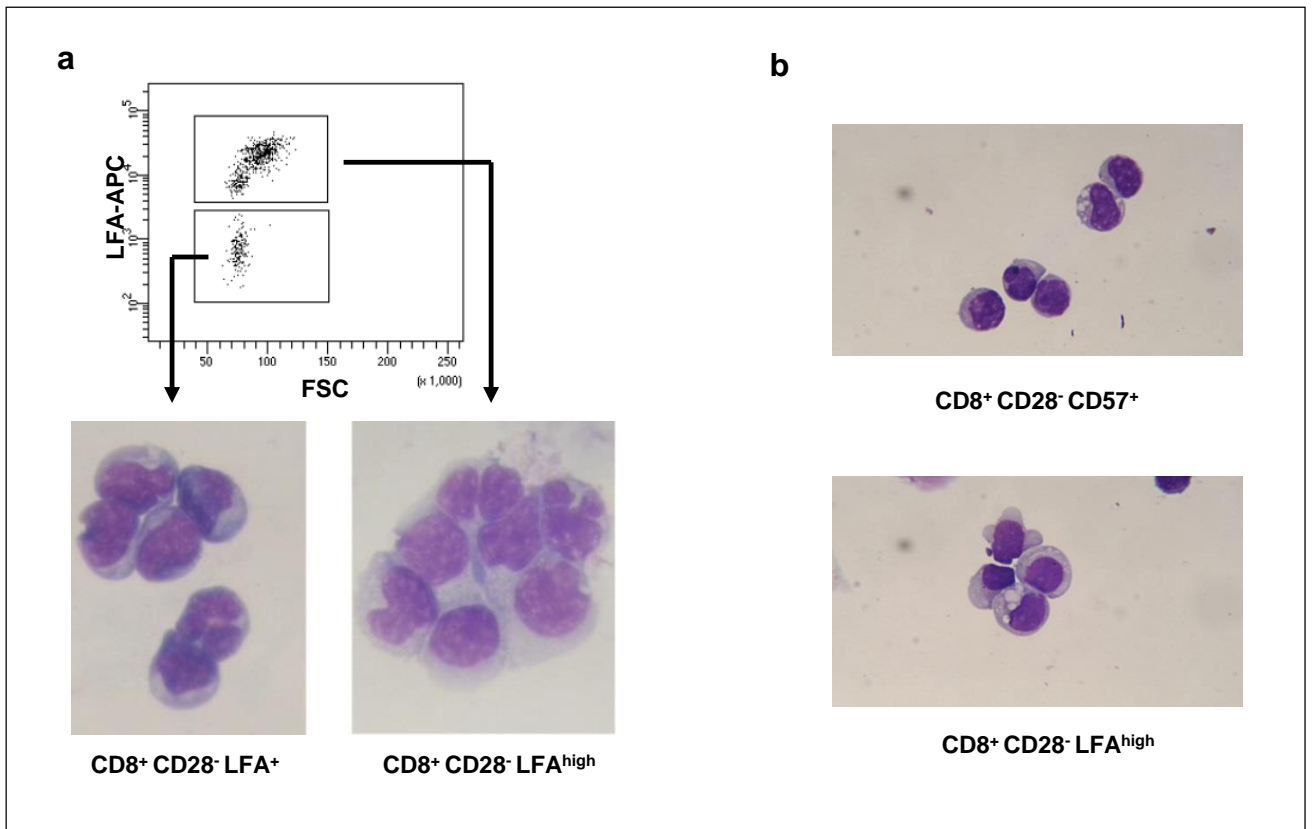
Supplementary Table

Supplementary table 1 - Patient characteristics

Patients were subdivided into early plasma-cell diseases (EPD: monoclonal gammopathy of undetermined significance (MGUS), and MM stage I) and advanced plasma-cell diseases (APD: MM stage II and III) (see also figure 2). Shown are the characteristics from 126 samples of 119 patients with EPD or APD, in which we analyzed T-cell compartment from PB or BM (figure 2). Together with the samples from HD, 181 total samples were analyzed.

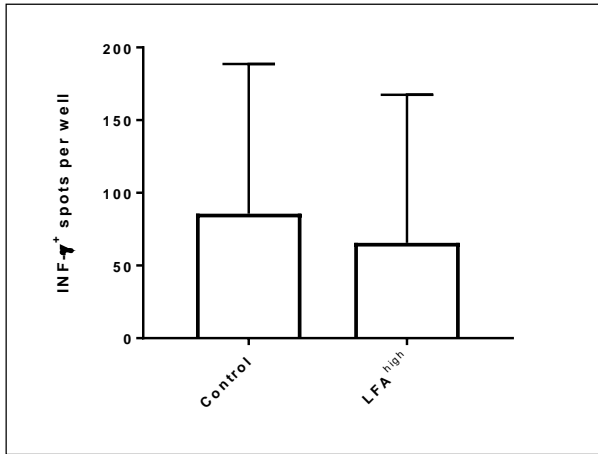
	No. of samples	
	EPD	APD
Total	57	69
BM	19	40
PB	38	29
Gender		
Male	29 (50.9%)	44 (63.8%)
Female	28 (49.1%)	25 (36.2%)
Median age (years)	56	62
Stage (Salmon and Durie)		
MGUS	39 (68.4%)	
IA	18 (31.6%)	
IIA		3 (4.3%)
IIIA		58 (84.1%)
IIIB		8 (11.6%)

Supplementary Figure 1



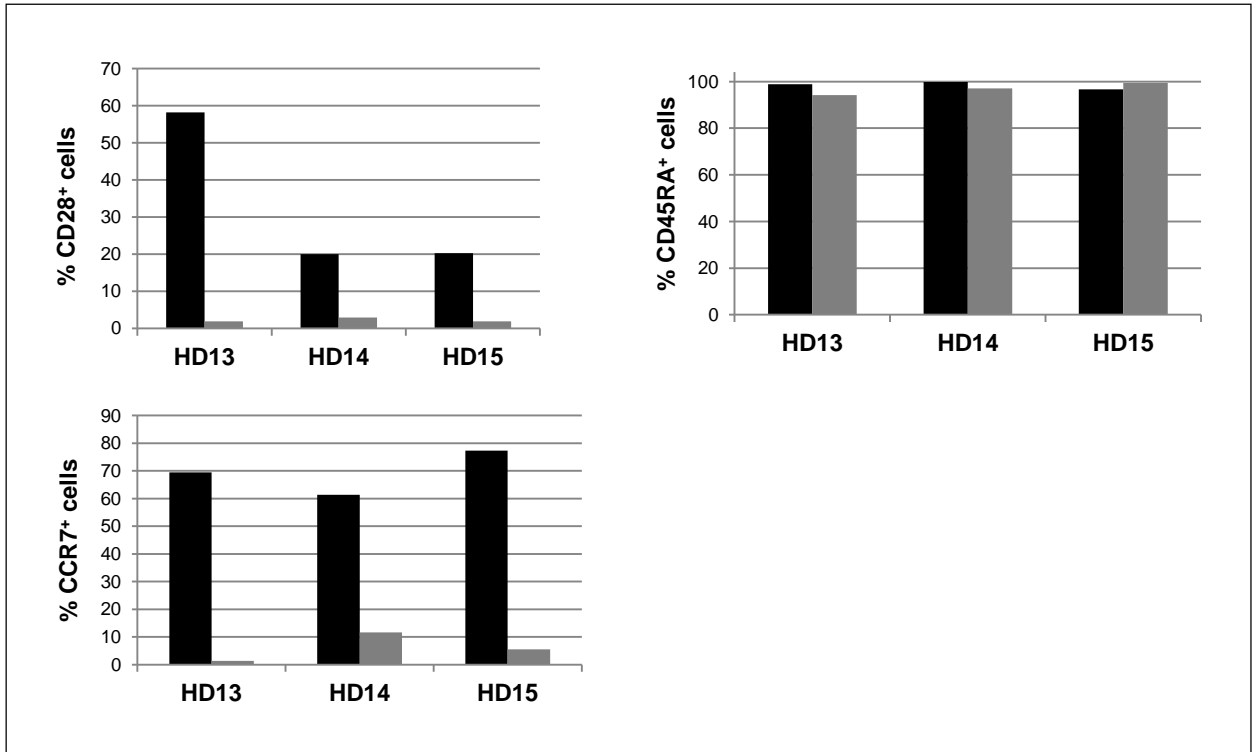
a) Morphology of CD8⁺CD28⁻LFA⁺ and CD8⁺CD28⁻LFA^{high} T-cells (modified Wright staining). b) Comparison between CD8⁺CD28⁻LFA^{high} and CD8⁺CD28⁻CD57⁺ T-cells

Supplementary Figure 2



Effect of CD8⁺CD28⁻LFA^{high} T-cells from MM patients (n=3) on the expansion of MART-1 specific T-cells with MART-1_{aa26-35}*A27L pulsed DC

Supplementary Figure 3



Maturation stage of initially CD8⁺CD28⁻LFA⁺ (black) and CD8⁺CD28⁻LFA^{high} (grey) T-cells following incubation with autologous PBMCs and DCs for 6 days from 3 donors.