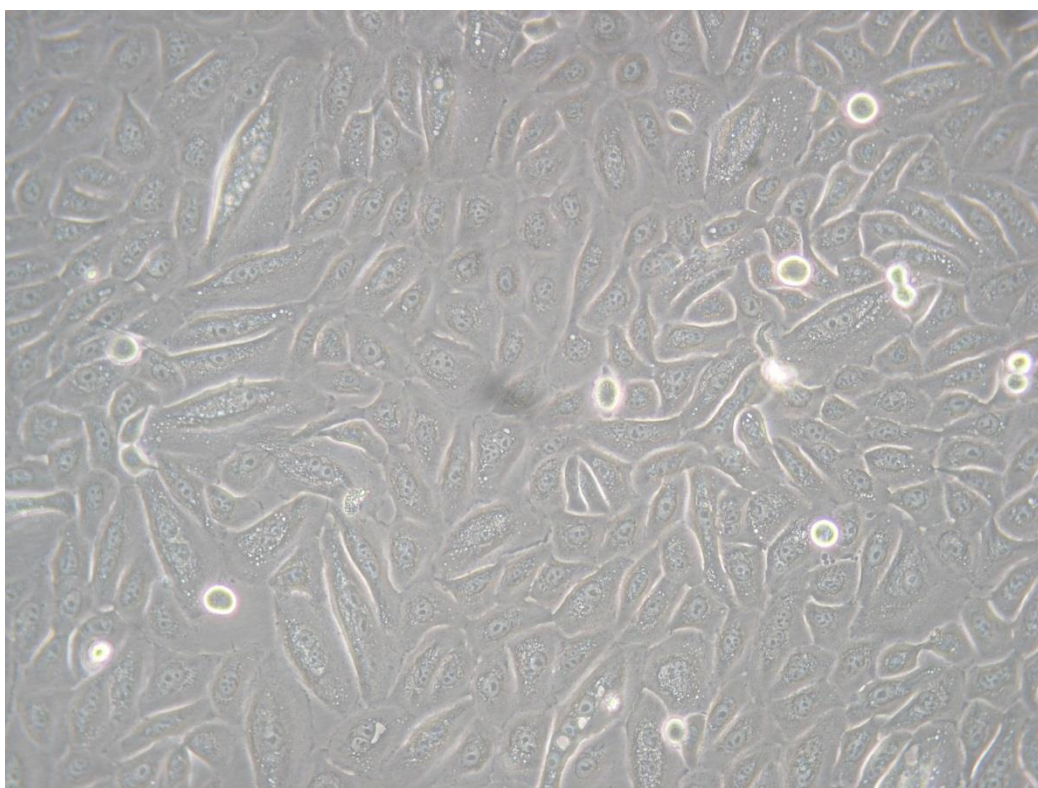
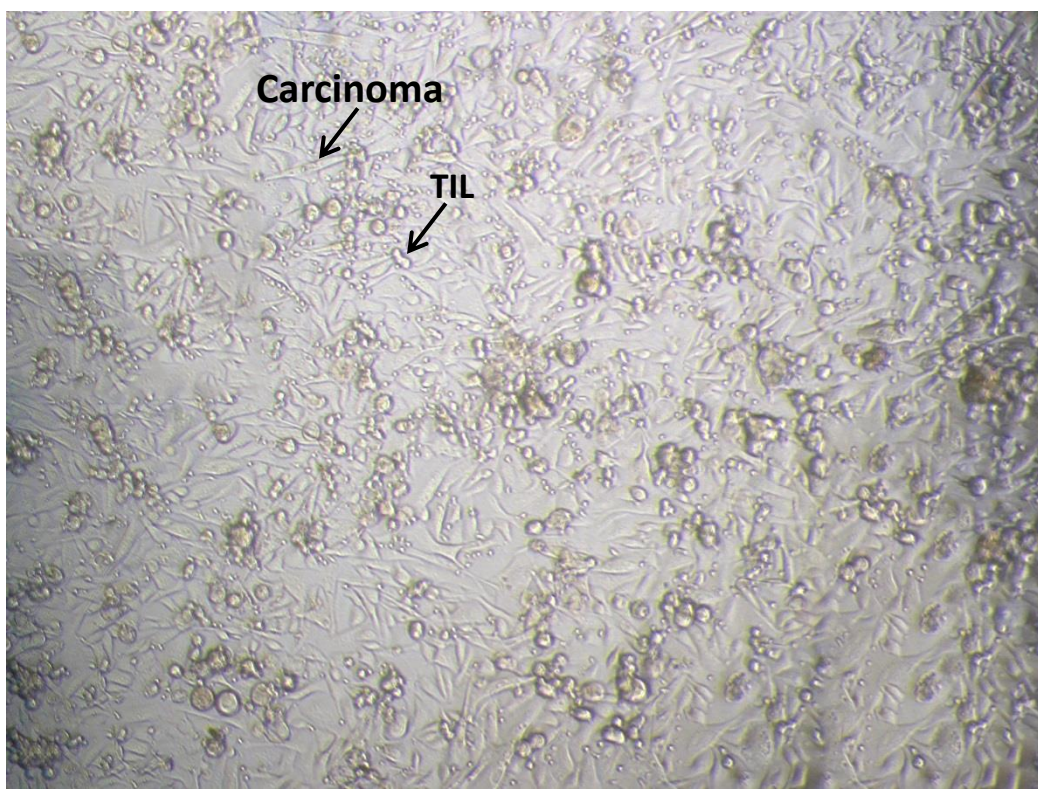


Suppl. Fig 1: Cell morphology. Camera shots using a light microscope from (a) lung carcinoma or (b) carcinoma and TIL of patient #2

a



b



Suppl. Table 1: NSCLC patients' baseline characteristics and clinical staging

Pt.	Age / Gender	Smoker	Primary Tumor	Nodes	Distant metastasis	Tumor volume (cm³)*	Carcinoma	18 months FU
1	68 / M	yes	T2a	N0	M0	0.90	acinar adeno	NED
2	65 / M	yes	T2a	N0	M0	3.48	mucin acinar adeno	NED
3	65 / F	yes	T2a	N0	M0	0.78	acinar adeno	Rec
4	64 / M	yes	T2a	N0	M0	0.63	squamous cell	NED
5	69 / M	no	T4	N0	M1 (brain)	1.90	adeno	NED

*available for tumor processing. NED, no evidence of disease; FU, follow up; Rec, recurrence

Suppl. Table 2: Lung carcinoma establishment.

Pt.	Fragment	Digest	TRC	Successful
1	no	no	no	no
2	no	yes	no	yes
3	no	no	yes	yes
4	yes	yes	yes	yes
5	no	no	no	no