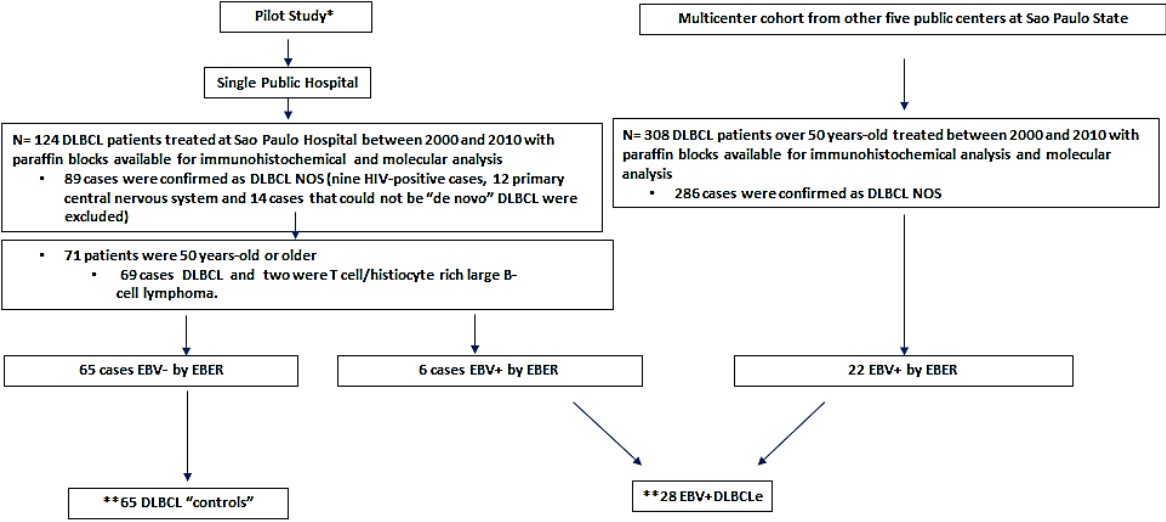


Supplementary Figure 1

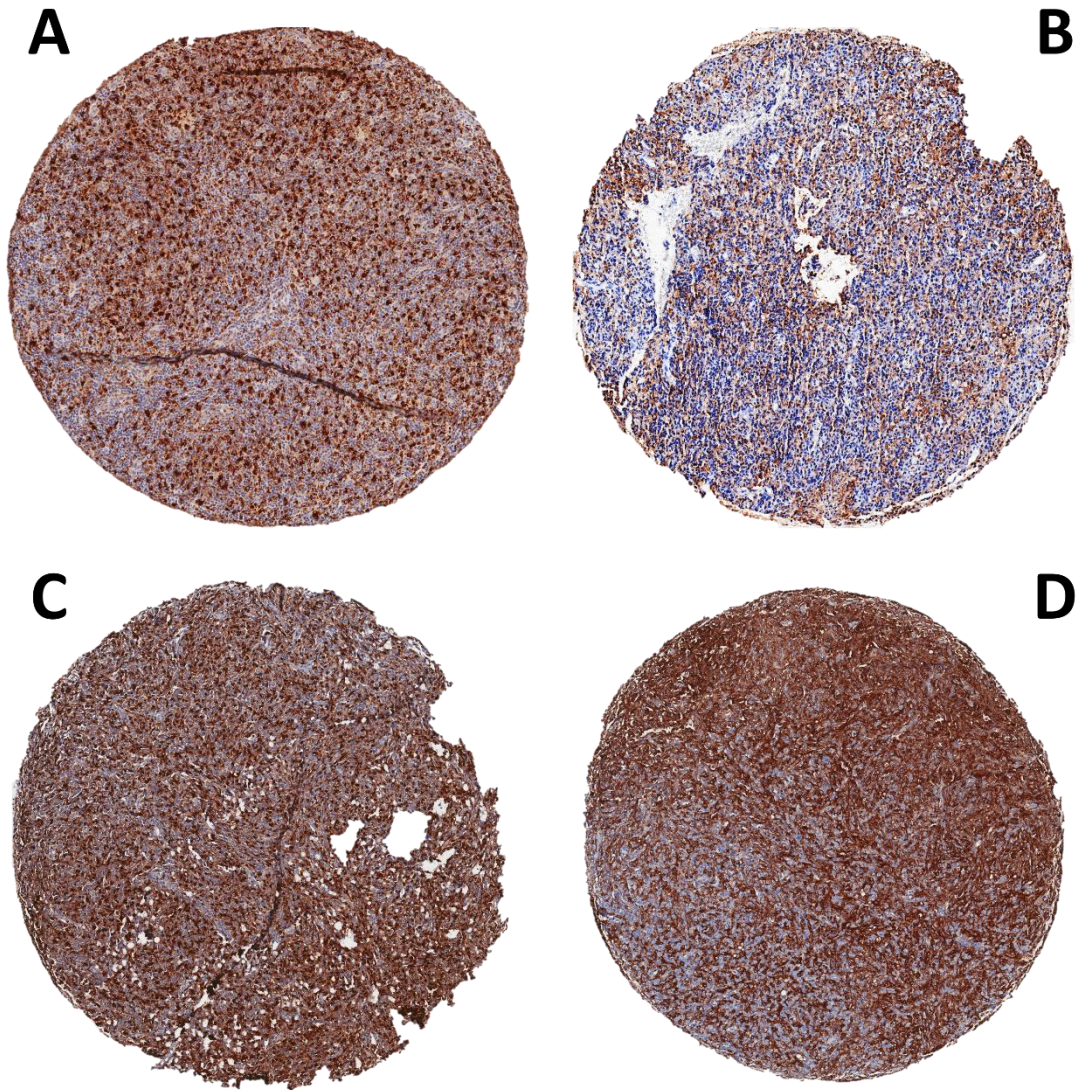


**Ratio 2.3 controls/case: Comparable according to age, gender, Ann Arbor Stage and IPI (Table 1)

Study Design. Origin of EBV+DLBCL cases from pilot and multicenter study.

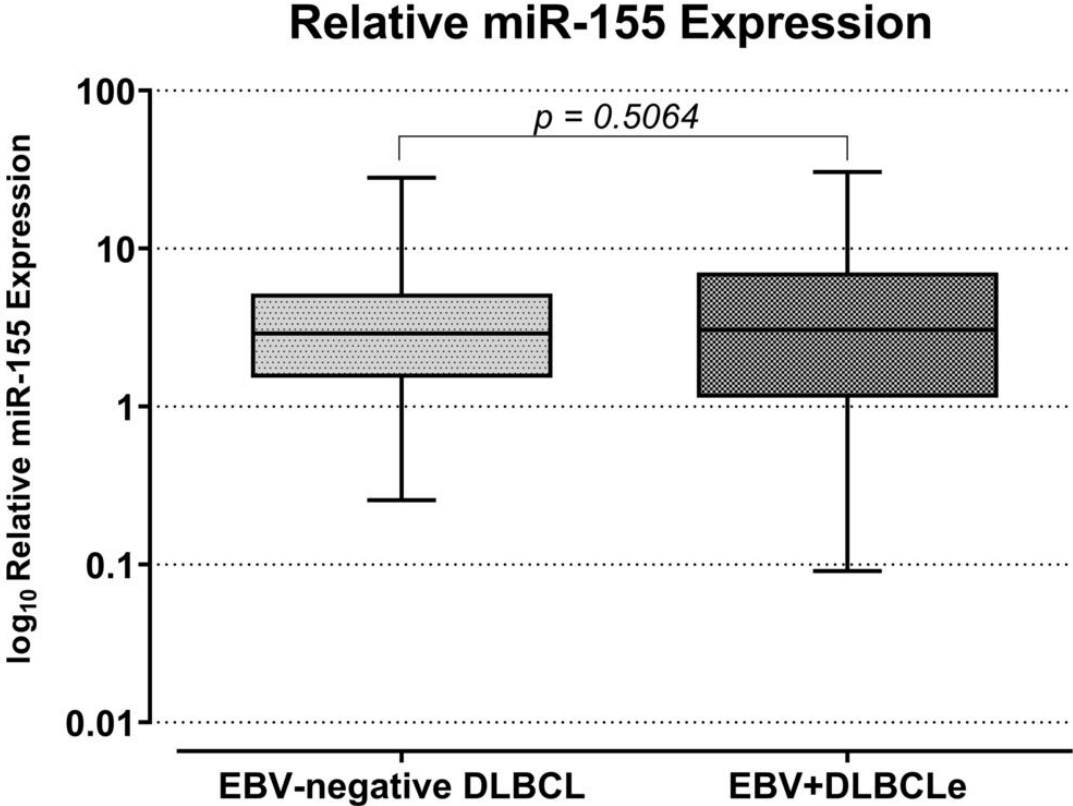
EBER = EBV- encoded RNA.

Supplementary Figure 2



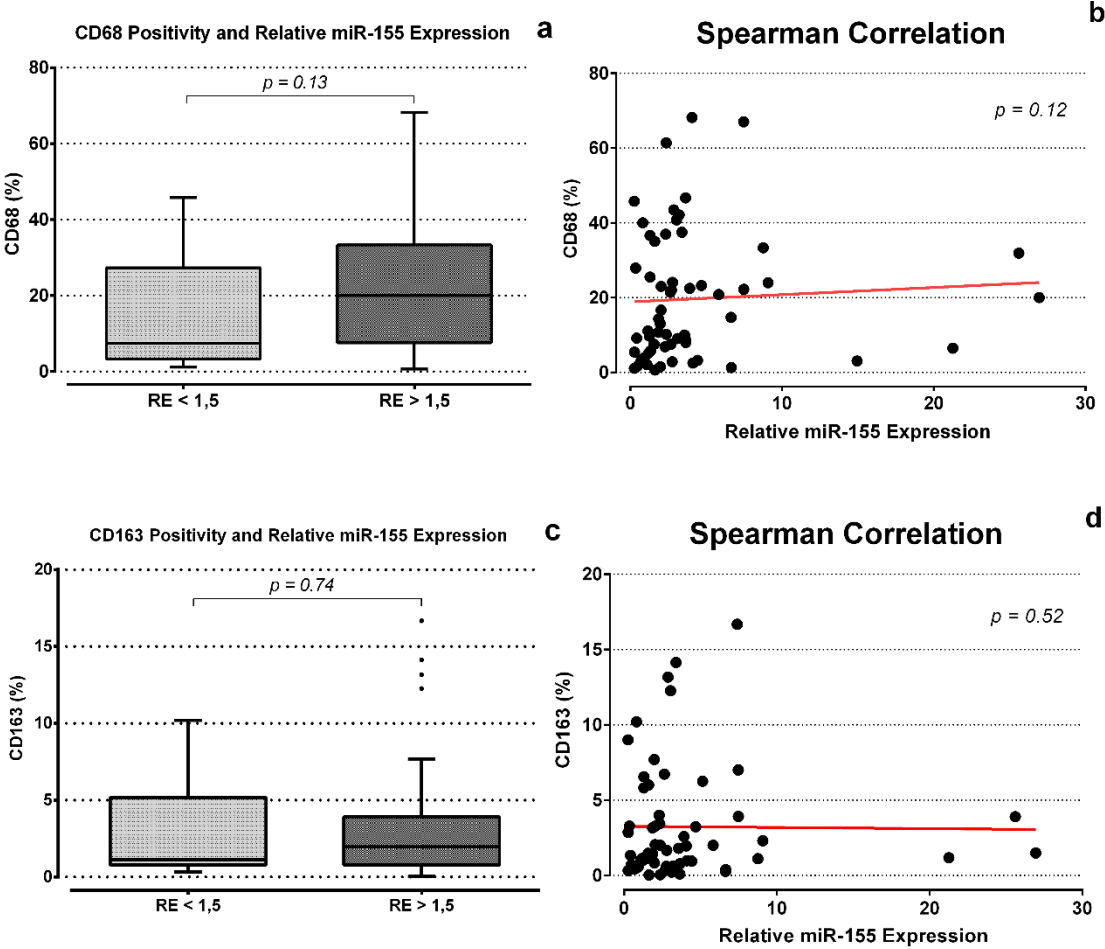
Immunohistochemistry staining of macrophage markers in EBV-negative DLBCL and EBV+DLBCL. (a and b) Examples of high CD68 and CD163 expression, respectively, in EBV-negative DLBCL. Magnification: x40. (c and d) Examples of high CD68 and CD163 expression, respectively, in EBV+DLBCL. Magnification: x40.

Supplementary Figure 3



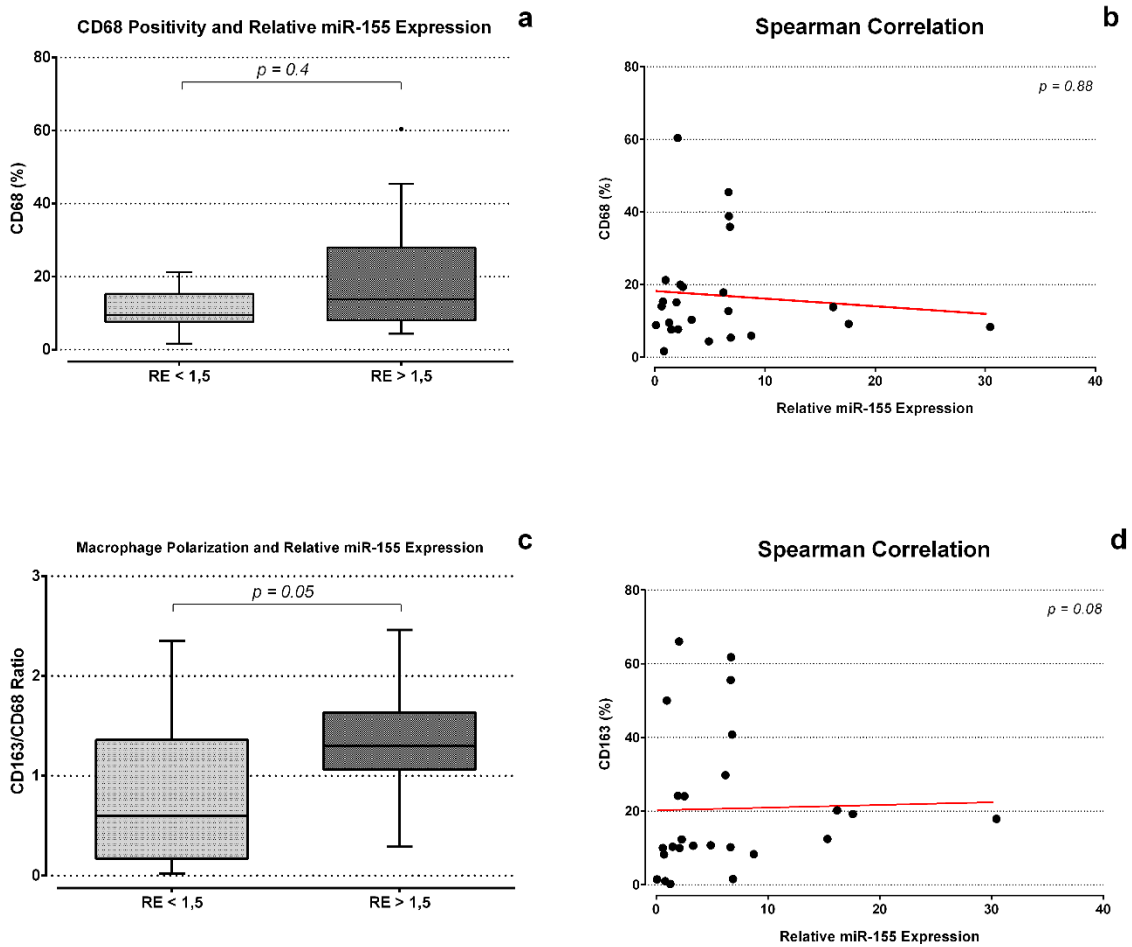
Relative expression of miR-155 in EBV-negative and EBV+DLBCL by qPCR. There was no statistically significant difference between the medians of the two groups evaluated ($p = 0.5064$, Mann-Whitney test).

Supplementary Figure 4



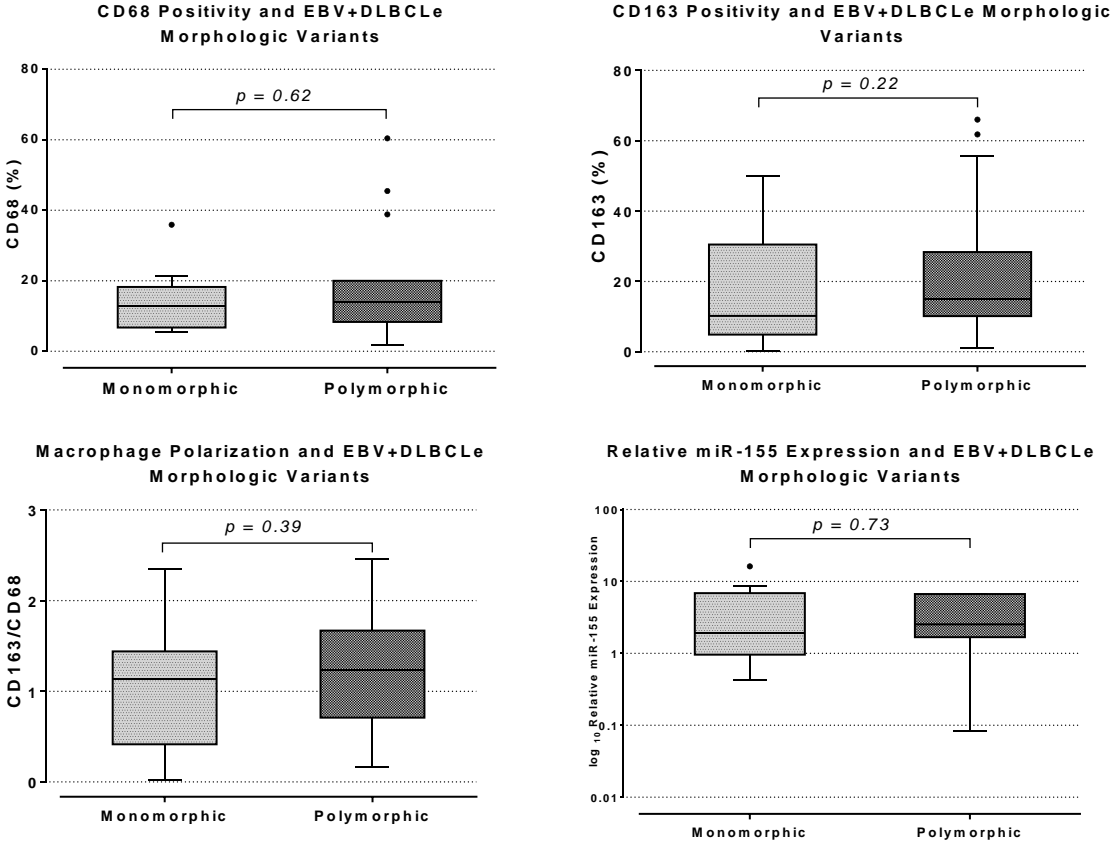
CD68, CD163, and relative expression of miR-155 in EBV-negative DLBCL. (a, and c) The figures show CD68, and CD163 as a function of the relative expression of miR-155, p-values were obtained with the Mann-Whitney test (b, and d) Spearman correlation between CD68, and CD163 with miR-155 relative expression.

Supplementary Figure 5



CD68, macrophage polarization, and relative expression of miR-155 in EBV + DLBCL. (a, and c) The figures show CD68, and CD163/CD68 ratio as a function of the relative expression of miR-155, p-values were obtained with the Mann-Whitney test. (b, and d) Spearman correlation between CD68, and CD163 with miR-155 relative expression.

Supplementary Figure 6



CD68, CD163, and macrophage polarization markers as a function of histological classification of EBV+DLBCL. No association between the studied parameters and the histological variants of EBV+DLBCL was found.

Supplementary Table 1

Clinical data of patients ≥ 50 years-old with DLBCL according to the presence of the Epstein-Barr virus.

	EBV+DLBCLe	EBV-negative DLBCL	p*
Age	51 – 88 years Median: 68 years	50 – 85 years Median: 67 years	
Gender			
<i>Female</i>	16 (57.2%)	36 (55.4%)	0.8755
<i>Male</i>	12 (42.8%)	29 (44.6%)	
Ann Arbor Staging System			
<i>I/II</i>	10 (38.4%)	25 (38.5%)	1.0000
<i>III/IV</i>	16 (61.6%)	40 (61.5%)	
<i>Unavailable</i>	2	0	
IPI			
≤ 2	12 (57.1%)	29 (46.7%)	0.2057
> 2	9 (42.9%)	33 (53.3%)	
<i>Unavailable</i>	7	3	
EBV+DLBCLe Morphologic Variants			
<i>Monomorphic</i>	11 (39.3%)	-	
<i>Polymorphic</i>	17 (60.7%)	-	