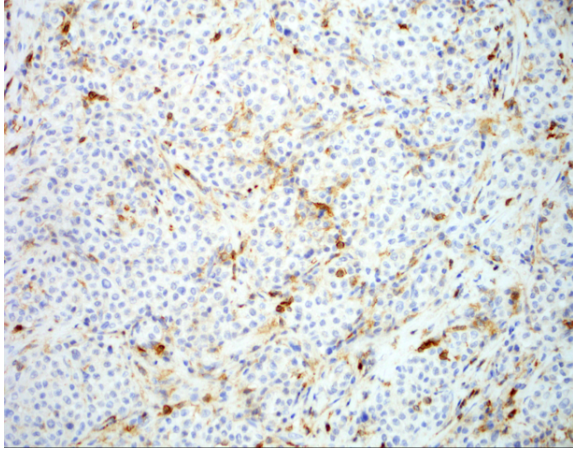
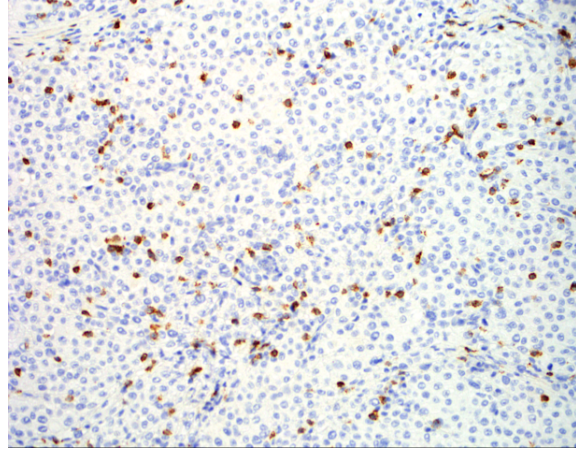


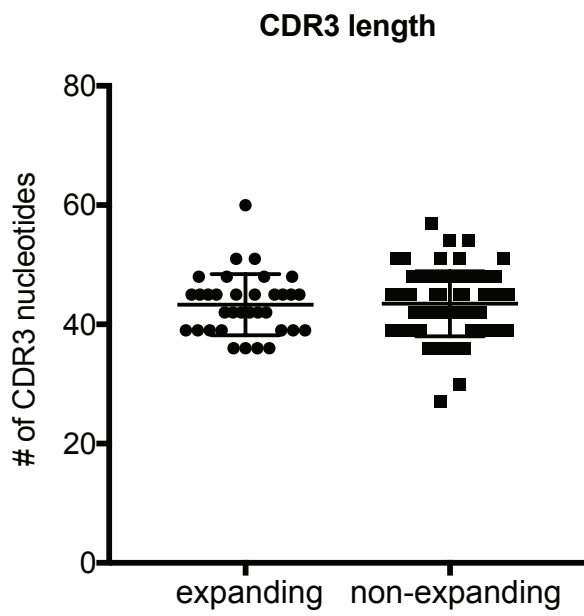
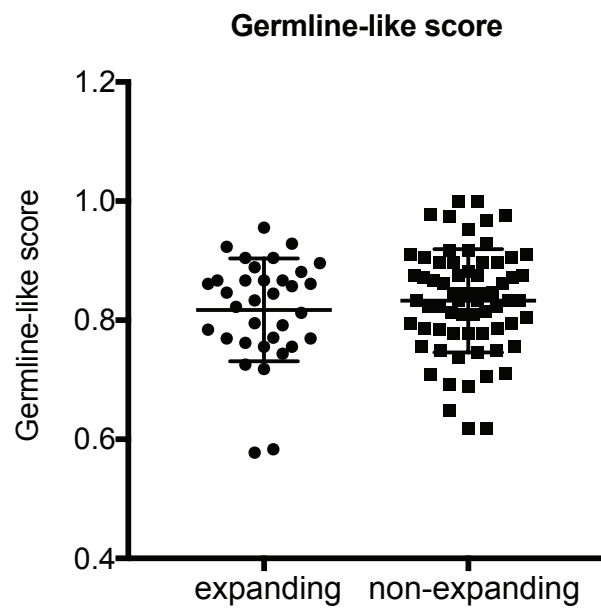
CD4



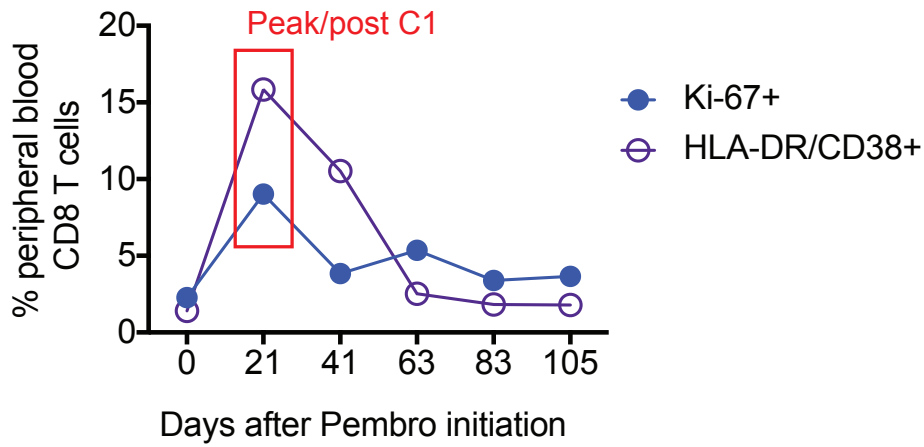
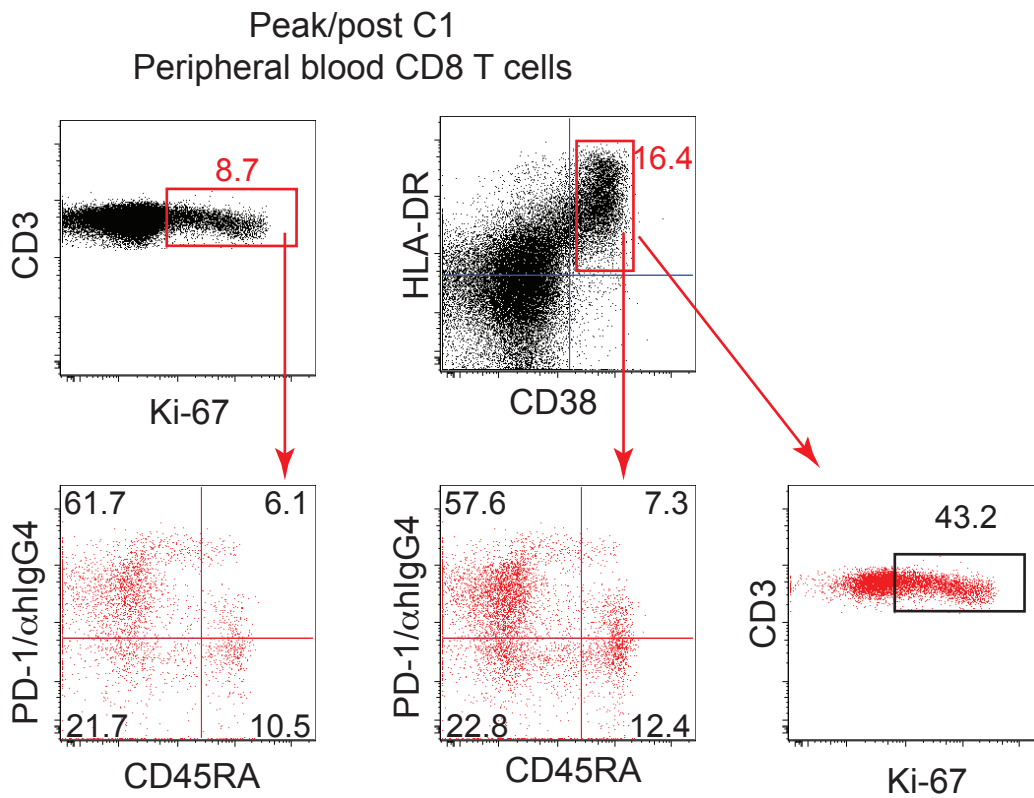
CD8



Supplementary Figure 1: Immunohistochemical analysis of tumor-infiltrating CD4 and CD8 T cells in mildly-infiltrated (non-hotspot) site of the liver metastasis.

a**b**

Supplementary Figure 2: TCR CDR3 sequence analysis of tumor-infiltrating peripheral blood CD8 T cell clones with a blood/tumor ratio of less than 3. **(a)** CDR3 length and **(b)** germline-like score of expanding and non-expanding T cell clones.

a**b**

Supplementary Figure 3: Analysis of activated and proliferating CD8 T cells in peripheral blood. **(a)** Frequency of activated HLA-DR/CD38+ and proliferating Ki-67+ CD8 T cells during the course of treatment. **(b)** CD45RA and PD-1 expression on Ki-67+ and HLA-DR/CD38+ CD8 T cells 21 days post treatment initiation (post cycle 1).