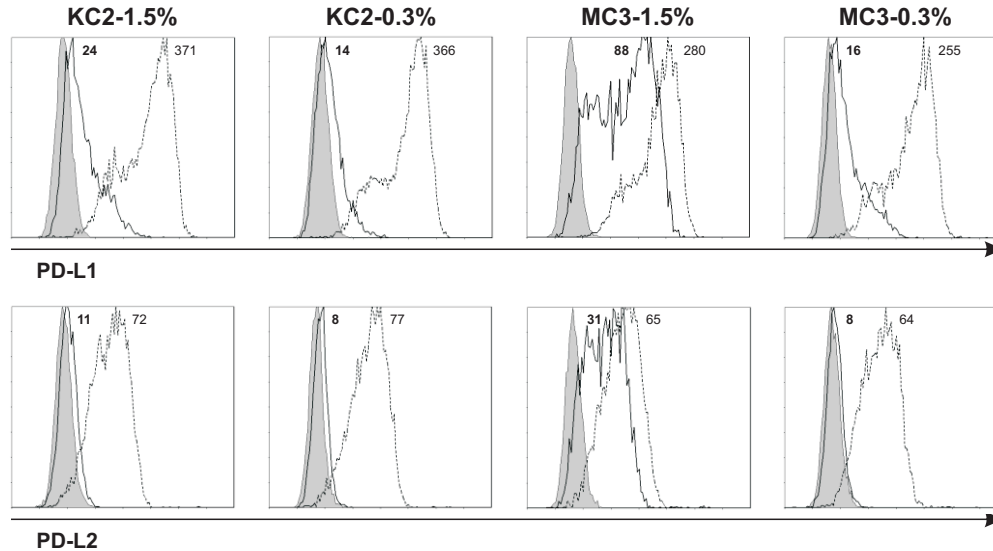


Supplementary Figure 1



Supplementary Figure 1. PD-L1 and PD-L2 are efficiently silenced upon LNP-mediated siRNA delivery. At days 3 and 7 of culture, siRNA-LNP were added. Subsequently, DC were cultured in maturation medium containing IL-1 β , IL-6, TNF- α and PGE2, and after 2 days PD-L expression levels were analyzed by flow cytometry. Surface expression of PD-L1 and PD-L2 is depicted for one representative donor out of 3 experiments following addition of 500 nM PD-L1 or PD-L2 siRNA-LNP (solid line), 500 nM control (dotted line) as compared to isotype control staining (filled grey). Four different siRNA containing LNP formulations composed of either cationic lipid KC2 or MC3 in combination with 1.5% or 0.3% PEG were tested. The numbers in the plots represent the mean fluorescence intensity of PD-L1 and PD-L2.