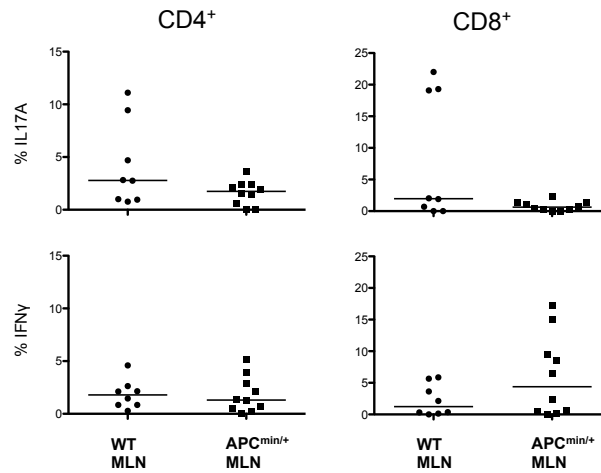


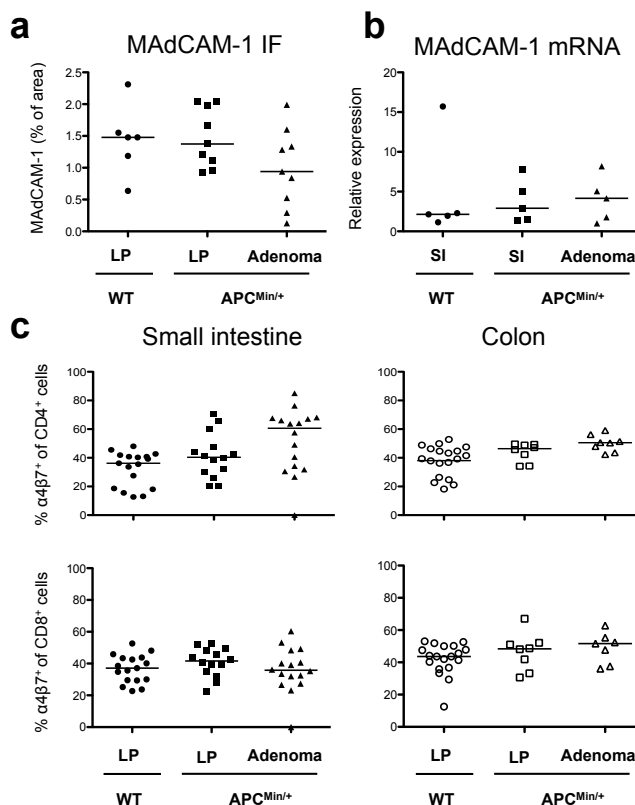
## Supplementary

**Supplementary table 1:** Forward and reverse primers used for real time PCR.

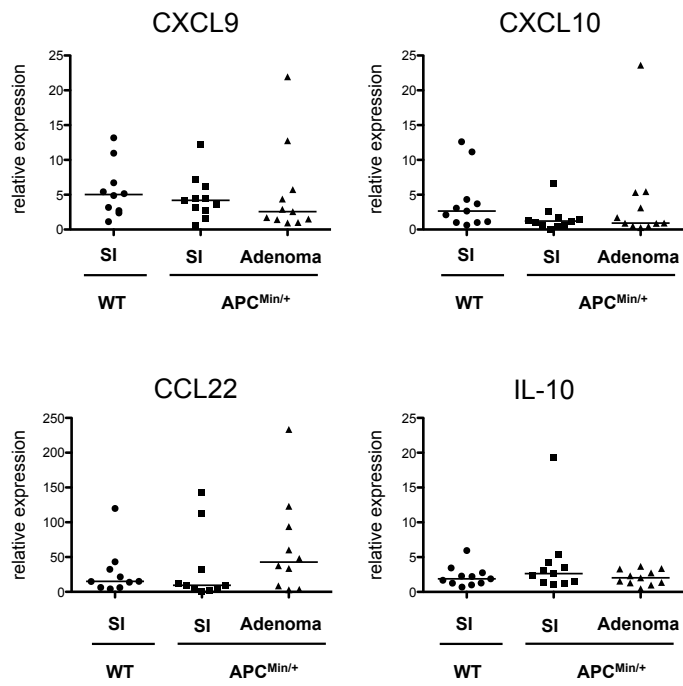
	<b>Forward primer</b>	<b>Reverse primer</b>
$\beta$ -actin	5'-CTGACAGGATGCAGAAGGAGATTACT-3'	5'-GCCACCGATCCACACAGAGT-3'
MAdCAM-1	5'-AACTGGTGCTGACCCATAGAAAGGA-3'	5'-GGGCT CAGCAGAGGTCGTGTT-3'
VCAM-1	5'-TGGGAAGCTGGAACGAAGTA-3'	5'-TGTCTGGAGCCAAACACTTG-3'
CCR9	5'-CACTCACCTCCGCCGTACATCT-3'	5'-ATGCCAGGAATAAGGCTTGTGAGTT-3'
CCL17	5'-TGCTTCTGGGGACTTTTCTG-3'	5'-CATCCCTGGAACACTCCACT-3'
CCL20	5'-TGGGTGAAAAGGGCTGTGA-3'	5'-CCAATTCATCCCAAAAAAGC-3'
CCL22	5'-TATGGTGCCAATGTGGAAGA-3'	5'-TCGGTTCTTGACGGTTATCA-3'
CCL25	5'-GCTAGGAATTATCACCAGCAGGAAGT-3'	5'-ATGTCCTCTGGATTCCACACA-3'
CXCL9	5'-CGATCCACTACAAATCCCTCA-3'	5'-AGTCCGGATCTAGGCAGGT-3'
CXCL-10	5'-ATATCGATGACGGGCCAGTGA-3'	5'-TTTCATCGTGGCAATGATCTCA-3'
CXCL-11	5'-AGCTGCTCAAGGCTTCCTTATGT-3'	5'-TCTGCCATTTTGACGGCTTT-3'
FoxP3	5'-GGCCCTTCTCCAGGACAGA-3'	5'-GCTGATCATGGCTGGGTTG-3'
IL-10	5'-CATTGAATCCCTGGGTGAGA-3'	5'-TGCTCCACTGCCTTGCTCTT-3'
IL-17	5'-CCGAATGAAGACCTGATAGA-3'	5'-TCATGTGGTGGTCCAGCTTTC-3'
IFN- $\gamma$	5'-TTTAACTCAAGTGGCATAGATGTGGAA-3'	5'-ATCTGGCTCTGCAGGATTTTCA-3'



**Supplementary figure 1:** Cytokine producing cells in WT and APC<sup>Min/+</sup> MLN. Lymphocytes were prepared from MLN from both WT and APC<sup>Min/+</sup> mice and stimulated with PMA/ionomycin. The frequencies of IL-17A<sup>+</sup> and IFN-γ<sup>+</sup> cells among CD4<sup>+</sup> or CD8<sup>+</sup> T cells were determined by flow cytometry. Symbol represents individual mice and bar represent median



**Supplementary figure 2:** MAdCAM-1 and integrin  $\alpha 4\beta 7$  expression in small intestinal lamina propria (LP) and adenoma. MAdCAM-1 expression was determined in small intestinal LP from APC<sup>Min/+</sup> and WT mice, and in adenomas from APC<sup>Min/+</sup> mice by immunofluorescence (IF) (a) and real time PCR (b). (a) Shows percentage of the tissue area expressing MAdCAM-1, and (b) the mRNA expression normalized against  $\beta$ -actin. The frequencies of  $\alpha 4\beta 7$ <sup>+</sup> cells (c) among CD4<sup>+</sup> and CD8<sup>+</sup> T cells were analysed by flow cytometry in small intestinal and colon LP and adenoma from 18 weeks old WT and APC<sup>Min/+</sup> mice. Symbols represent individual mice and lines represent median.



**Supplementary figure 3:** Chemokine mRNA expression in small intestine (SI) and adenomas. The expression of mRNA was examined in WT SI and APC<sup>Min/+</sup> unaffected SI and adenoma tissue from 18 week old mice by real time PCR and normalized against  $\beta$ -actin. Symbols represent individual mice and lines represent median.