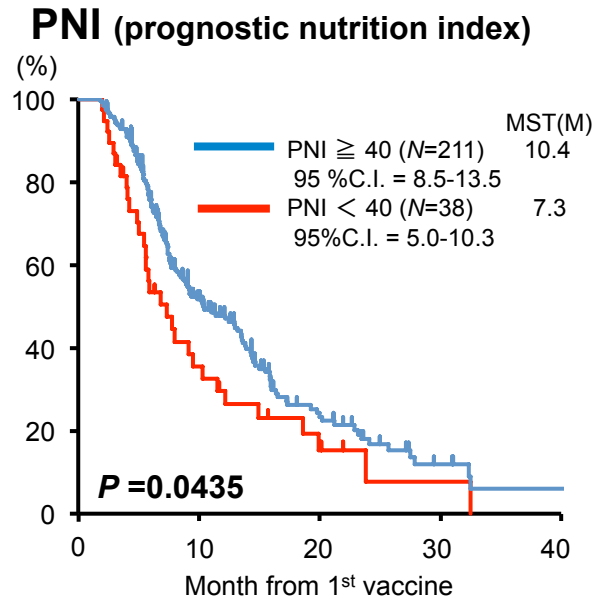
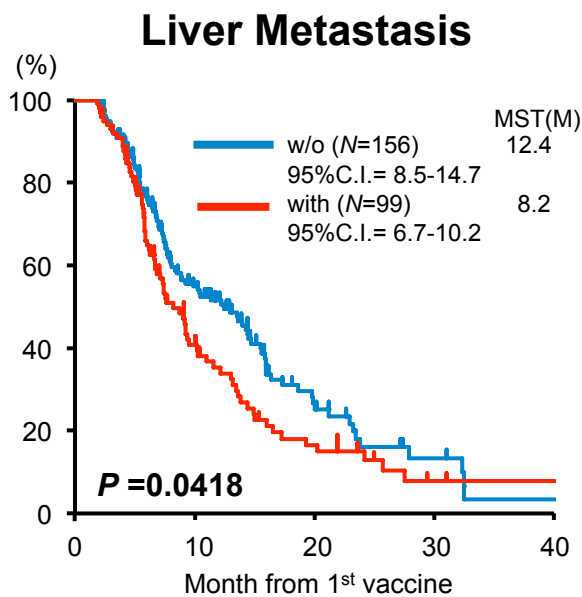
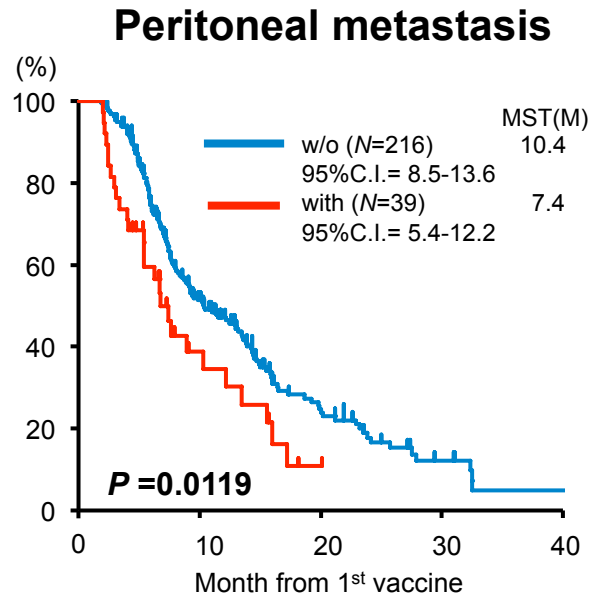
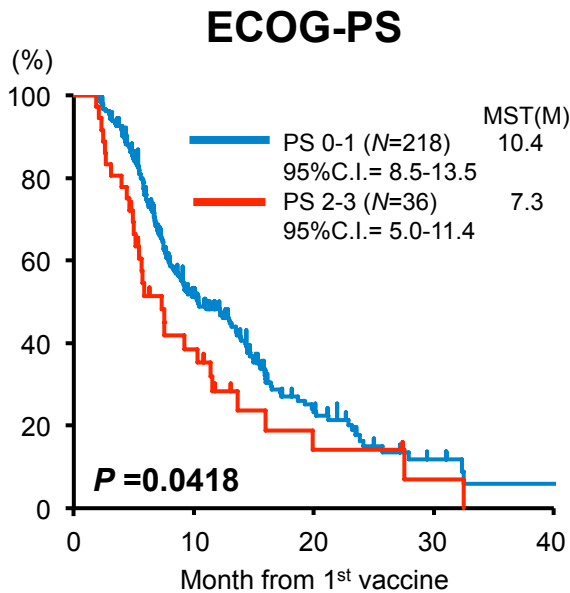


Supplementary Figure S1.



Supplementary Figure S1.

Kaplan-Meier plots for the patients' baseline factors that significantly affected the overall survival from the 1st DC vaccination. Survival curves were plotted using the Kaplan-Meier method, and survival curve comparisons were conducted with the log-rank test. The significance of results was accepted at P-values <0.05.

Supplementary Table S1. Patients' baseline characteristics

	OK432		P-value
	with (n=186)	without (n=69)	
Age (year)			
Median (range)	63 (27-84)	63 (34-75)	0.86
Gender – no. (%)			
Male	100 (54)	35 (51)	0.67
Female	86 (46)	34 (49)	
ECOG performance status score – no. (%)			
0	41 (22)	18 (26)	0.61
1	115 (62)	44 (64)	
2	26 (14)	5 (7)	
3	3 (2)	1 (1)	
4	1 (1)	0 (0)	
NA	0 (0)	1 (1)	
Clinical stage – no. (%)			
locally invasive	62	16	0.13
metastasis	124	53	
Laboratory data at leukapheresis (mean ± S.D.)			
WBC (/mL)	5345 (±2022)	5721 (±2408)	0.28
No. of lymphocytes (/mL)	1266 (±505)	1410 (±645)	0.17
Hemoglobin (g/dL)	11.5 (±1.7)	11.2 (±1.4)	0.20
Albumin (g/dL)	3.9 (±0.5)	3.9 (±0.5)	0.87
CRP (mg/dL)	0.94 (±1.8)	0.65 (±1.3)	0.11
WT1 A*2402/*0201/*0206 (%)	149 (80)	58 (84)	0.59
MUC1 (%)	166 (89)	60 (87)	0.51
Time to start DC vaccination from diagnosis (months)			
Median (range)	3.9 (1-36)	4.3 (1-31)	0.57
Number of DC vaccines (/leukapheresis)			
Median (range)	7 (5-55)	8 (5-38)	0.60
Viability of DC vaccines (%)			
Median (range)	84.0 (42.0-95.8)	86.5 (45.3-97.5)	0.18
Standard therapy combined with DC vaccine – no. (%)			
Chemotherapy			
GEM	100 (54)	35 (51)	0.34
GEM+S-1	41 (22)	22 (32)	
S-1	34 (18)	10 (14)	
others	11(6)	2 (3)	
Radiotherapy	10 (5)	2 (3)	0.43