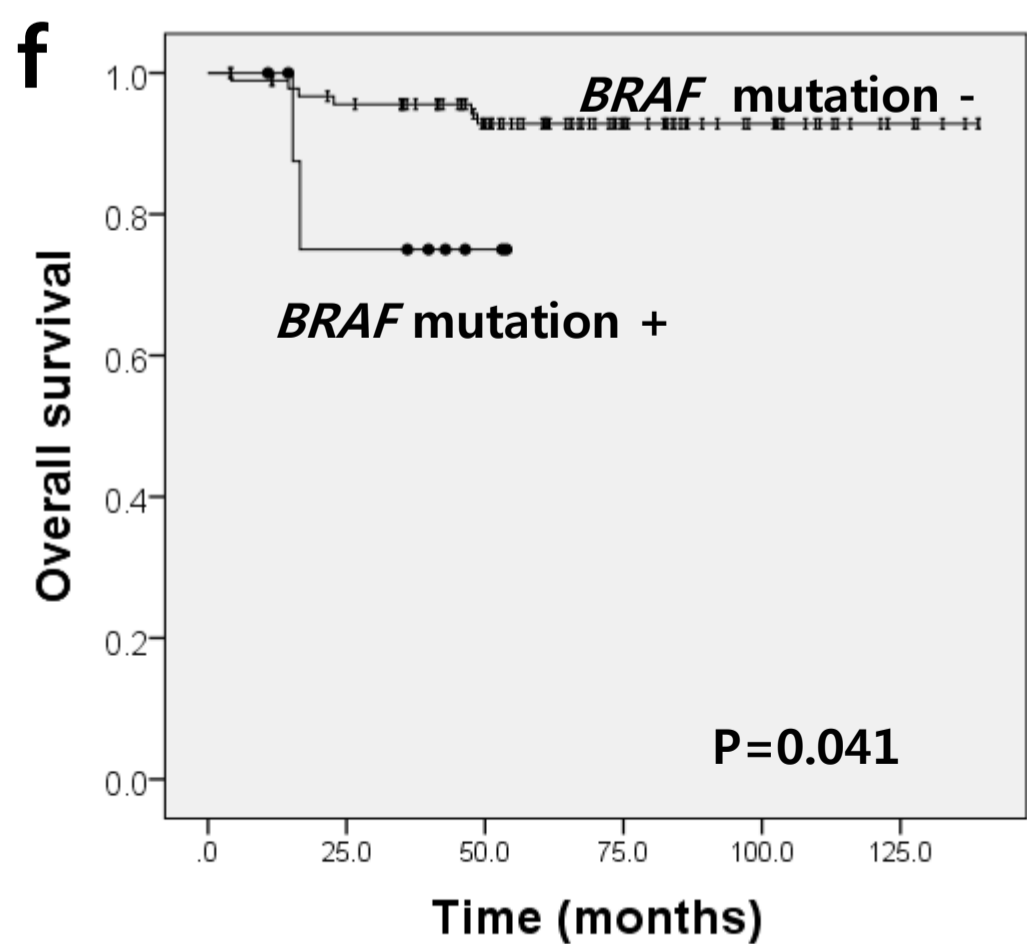
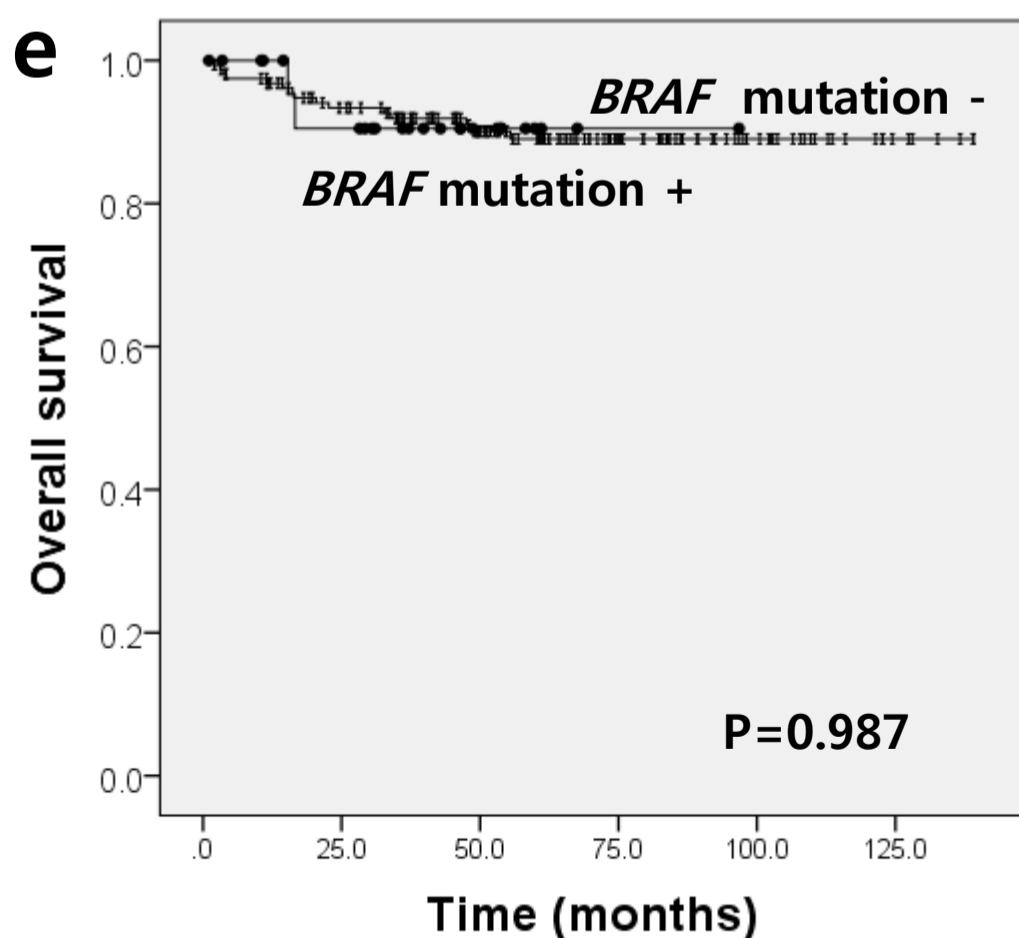
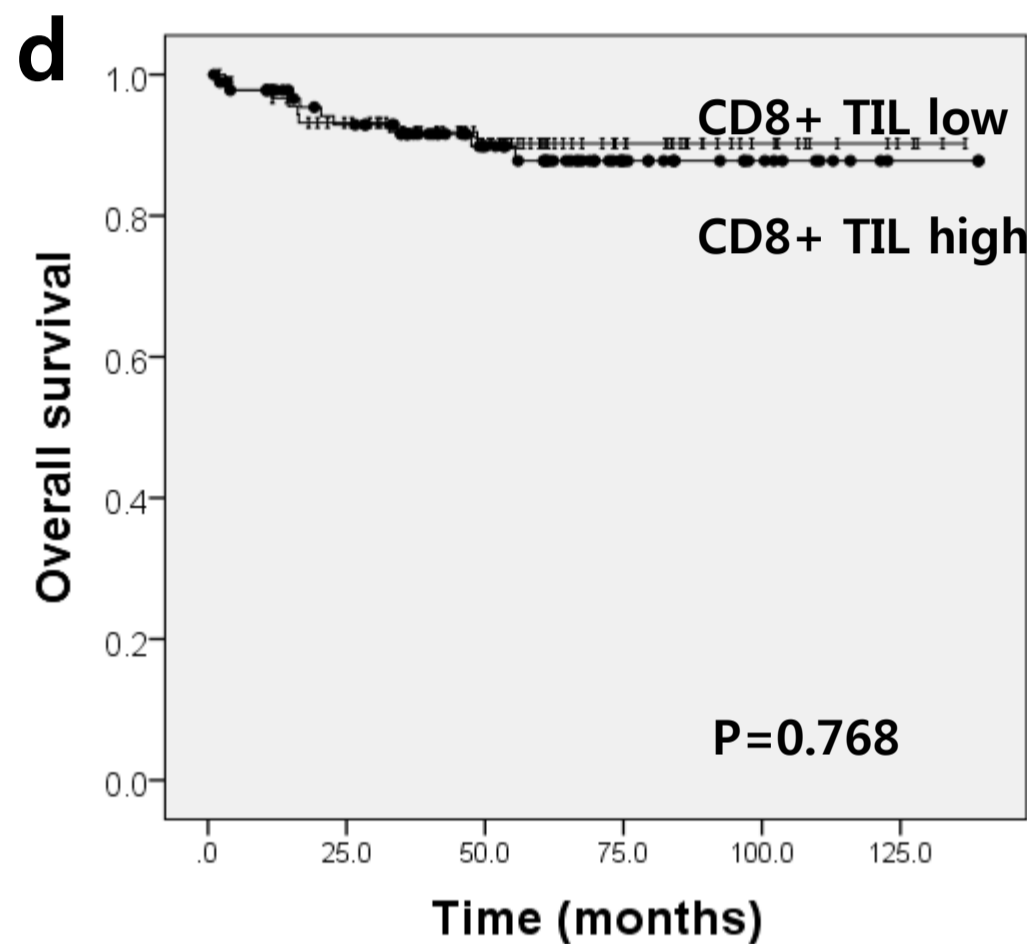
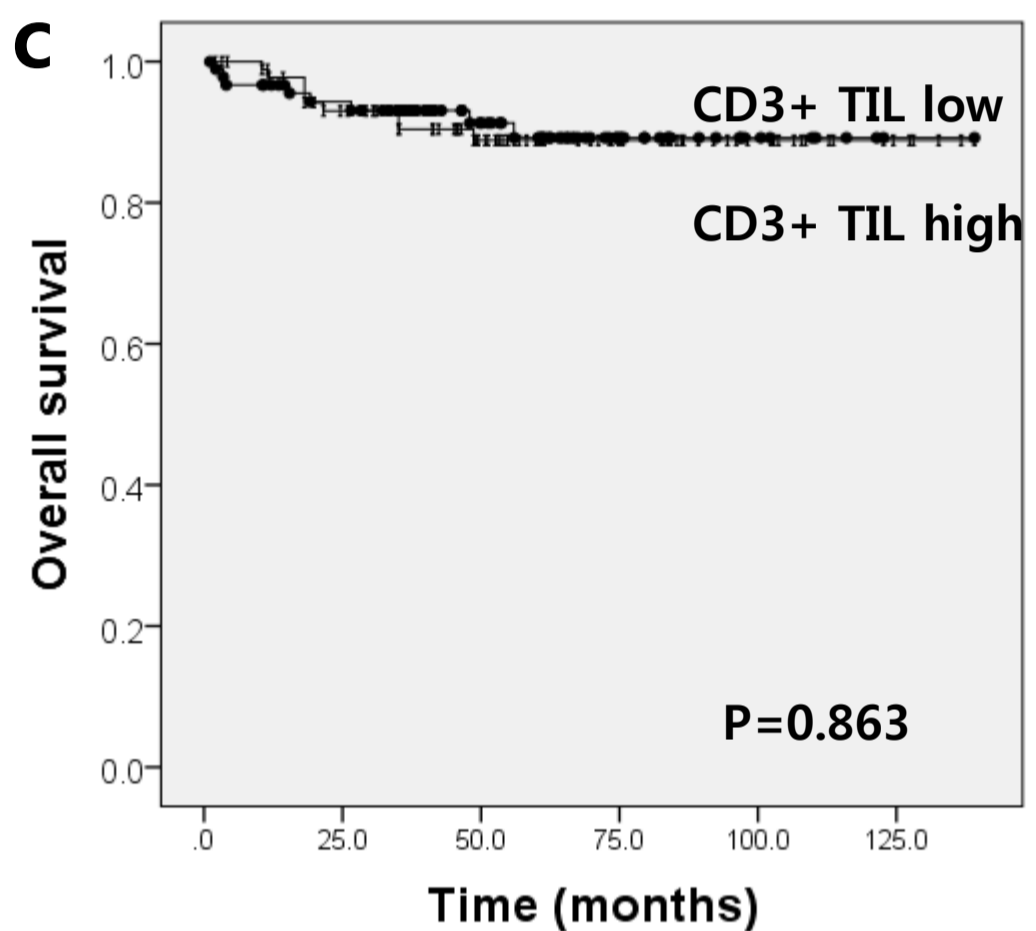
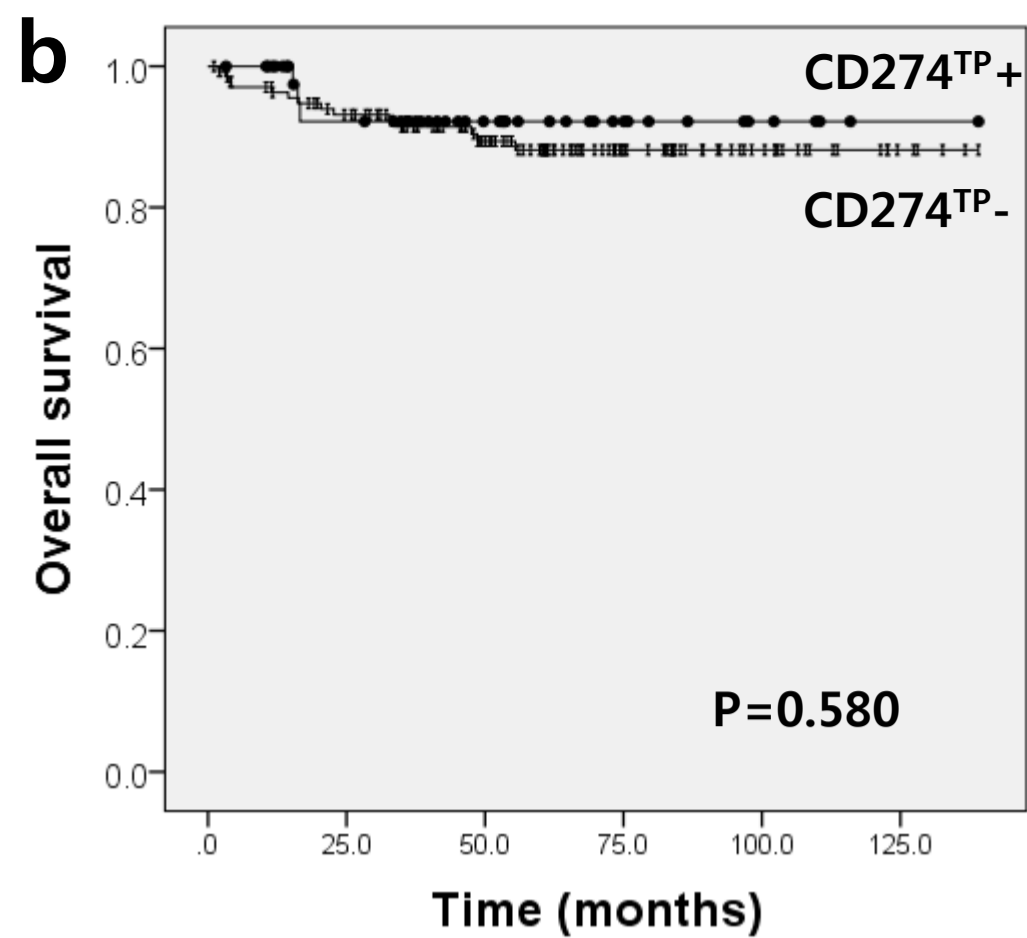
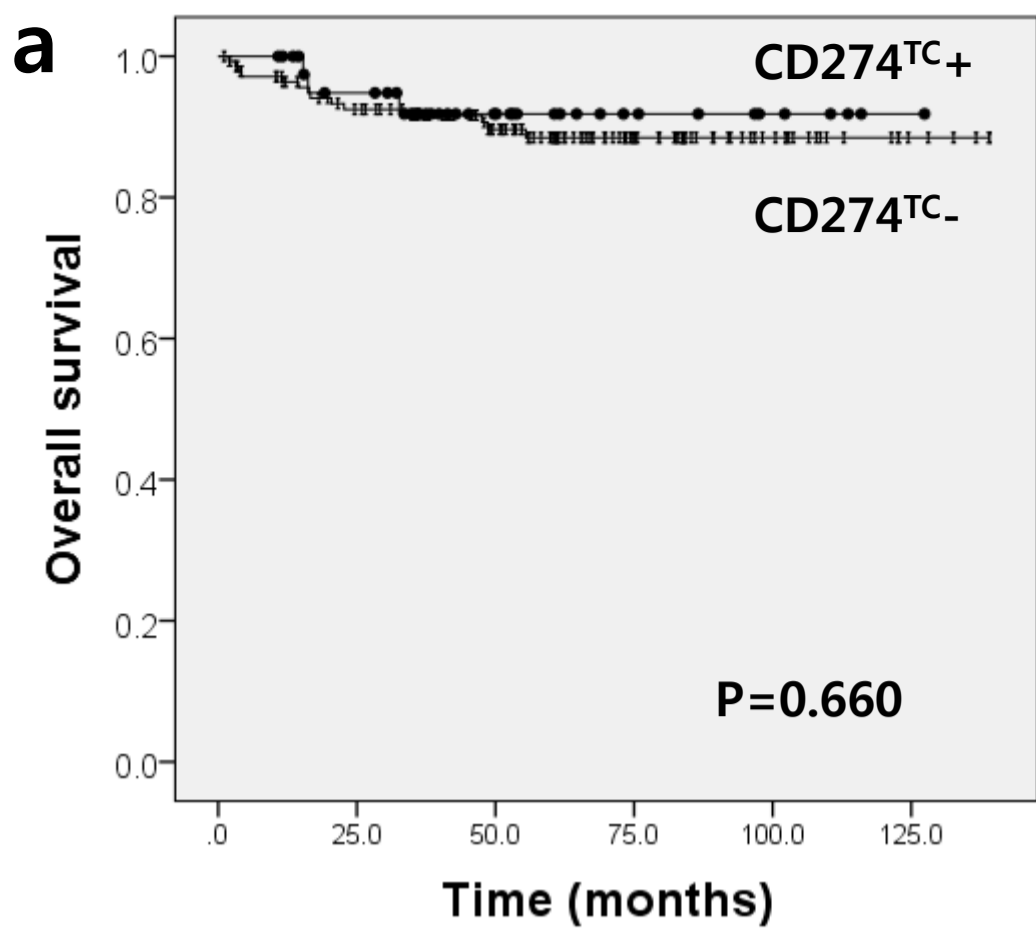


# Supplementary Materials

Supplementary Table 1. Intratumoral heterogeneity of CD274 expression in CRC

		CD274 <sup>TC</sup>	
		Negative	Positive
<b>MSI-H, n=186</b>			
CD274 <sup>TP</sup>	Negative	129 (69.4%)	<b>10 (5.4%)</b>
	Positive	<b>14 (7.5%)</b>	33 (17.7%)
		CD274 <sup>IC</sup>	
		Negative	Positive
<b>MSI-H, n=186</b>			
CD274 <sup>IP</sup>	Negative	58 (31.2%)	<b>26 (14.0%)</b>
	Positive	<b>21 (11.3%)</b>	81 (43.5%)
		CD274 <sup>IC</sup>	
		Negative	Positive
<b>MSS, n=153</b>			
CD274 <sup>IP</sup>	Negative	83 (54.2%)	<b>14 (9.1%)</b>
	Positive	<b>23 (15.0%)</b>	33 (21.6%)

Abbreviations: CRC, colorectal cancer; IC, immune cells at the center; IP, immune cells at the periphery; MSS, microsatellite stable; MSI-H, microsatellite instability-high; TC, tumor cells at the center; TP, tumor cells at the periphery



**Supplementary Figure 1.** Kaplan–Meier survival curves illustrating the prognostic effect of CD274 expression on tumor cells, TIL density and *BRAF* status in MSI-H colorectal cancer. (a and b) CD274 expression on tumor cells at (a) the tumor center and (b) tumor periphery. (c) CD3 expression on tumor-infiltrating lymphocytes; (d) CD8 expression on tumor-infiltrating lymphocytes. (e and f) *BRAF* mutation in (e) all of MSI-H CRC patients and in (f) subgroup of patients who received post-operative chemotherapy in MSI-H CRC.