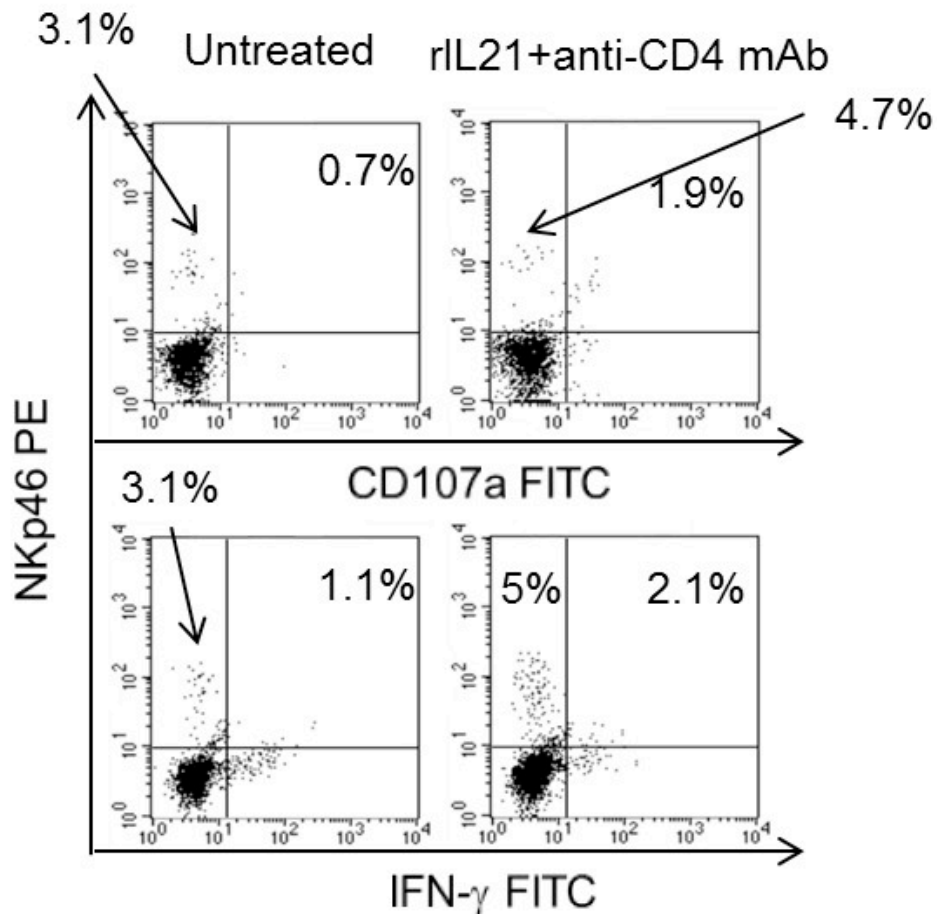
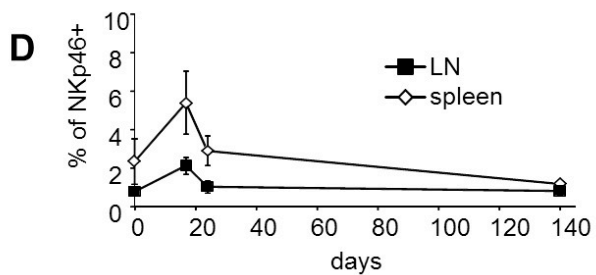
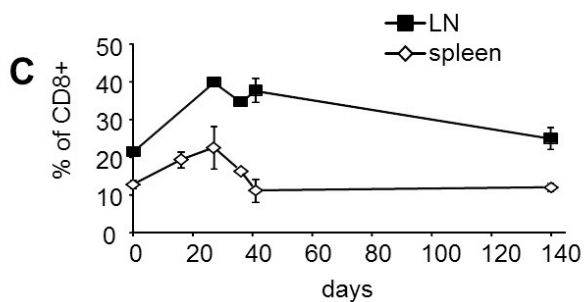
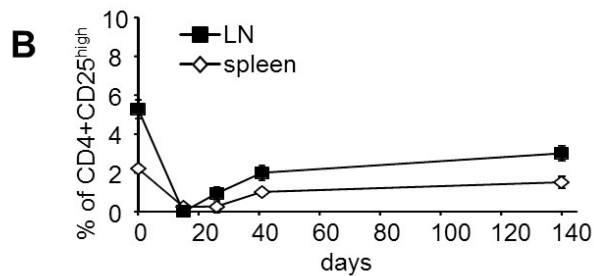
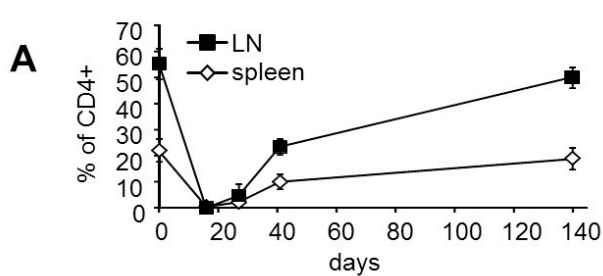


## Supplemental Figures

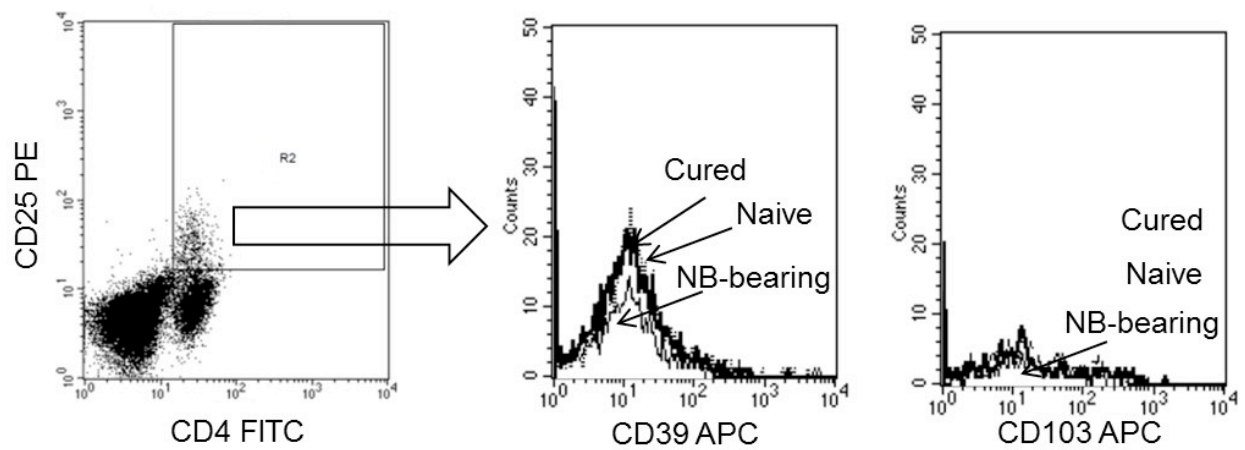
Cancer Immunology, Immunotherapy (submitted in 2014) Rigo V. et al.



**Supplemental Figure 1:** Two color immunofluorescence analysis, performed at day 19 after NB implant, of NKp46<sup>+</sup> cells expressing CD107a (upper panels) or IFN-γ (lower panels) in spleen cells from untreated tumor-bearing mice and from mice receiving combination IT. Dot plot are representative of three different experiments with similar results. Percentages of double positive cells are shown in the upper right quadrants of each dot plot.



**Supplemental Figure 2:** Changes in lymphoid cell subsets in mice receiving combination immunotherapy. The percentages of total CD4<sup>+</sup> (A), CD4<sup>+</sup>CD25<sup>high</sup> Treg (B), CD8<sup>+</sup> (C) and NKp46<sup>+</sup> (D) lymphocytes in LN and spleen from mice receiving combination IT are shown as a function of time from the beginning of treatment (n°3 mice/time point Mean±SD).



**Supplemental Figure 3:** Three-color immunofluorescence analysis of CD39 and CD103 expression on  $CD4^+CD25^{high}$  cells. Histograms represent CD39 and CD103 expression of R2 gated  $CD4^+CD25^{high}$  spleen cells from naïve (dotted line) untreated NB-bearing (gray line) and long-term cured mice (black line). One experiment representative of three is shown. Overall no significant changes in CD39 or CD103 were observed.