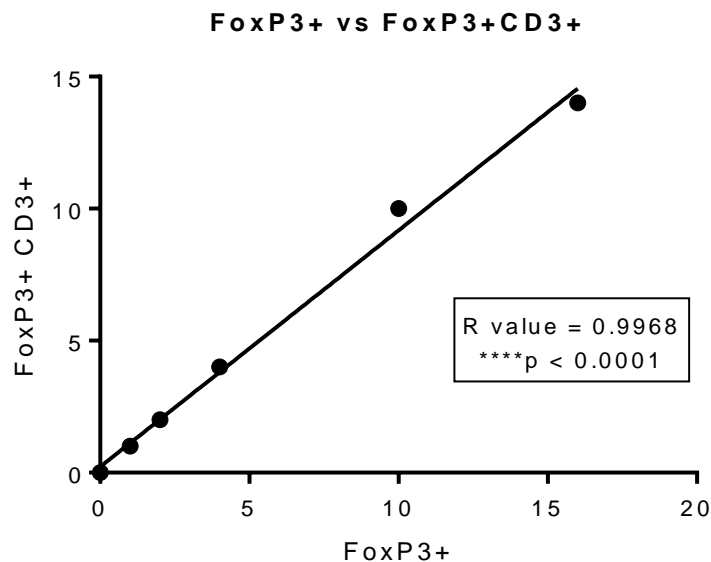
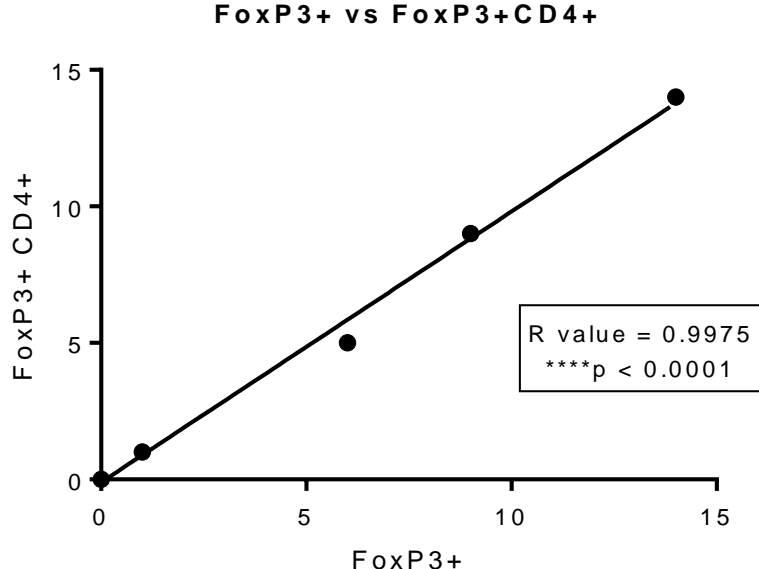


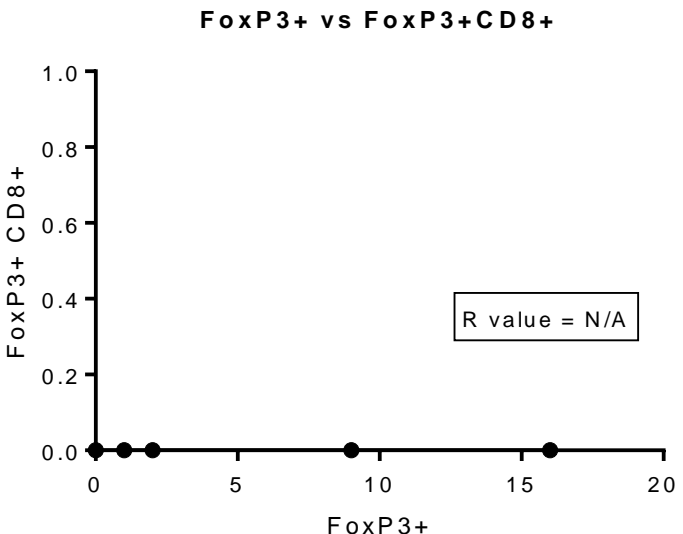
Supplemental Fig. 1a



Supplemental Fig. 1b



Supplemental Fig. 1c



Supplemental Fig. 1: Strong concordance between FoxP3 expression alone and FoxP3+CD4+ cells and FoxP3+CD3+ cells and no concordance between FoxP3 expression and FoxP3+CD8+ cells. GBM samples were dual stained for FoxP3 by CD3, CD4 or CD8 and compared for expression levels of FoxP3 alone versus dual staining by CD3, CD4 or CD8. There is a very strong positive correlation between FoxP3 expression alone and FoxP3+CD3+ (p value < 0.0001, correlation coefficient = 0.9968, Supplemental Fig. 1a) and FoxP3+CD4+ double staining (p value < 0.0001, correlation coefficient = 0.9975, Supplemental Fig. 1b), and no correlation with FoxP3 expression by CD8+ double staining (Supplemental Fig. 1c).