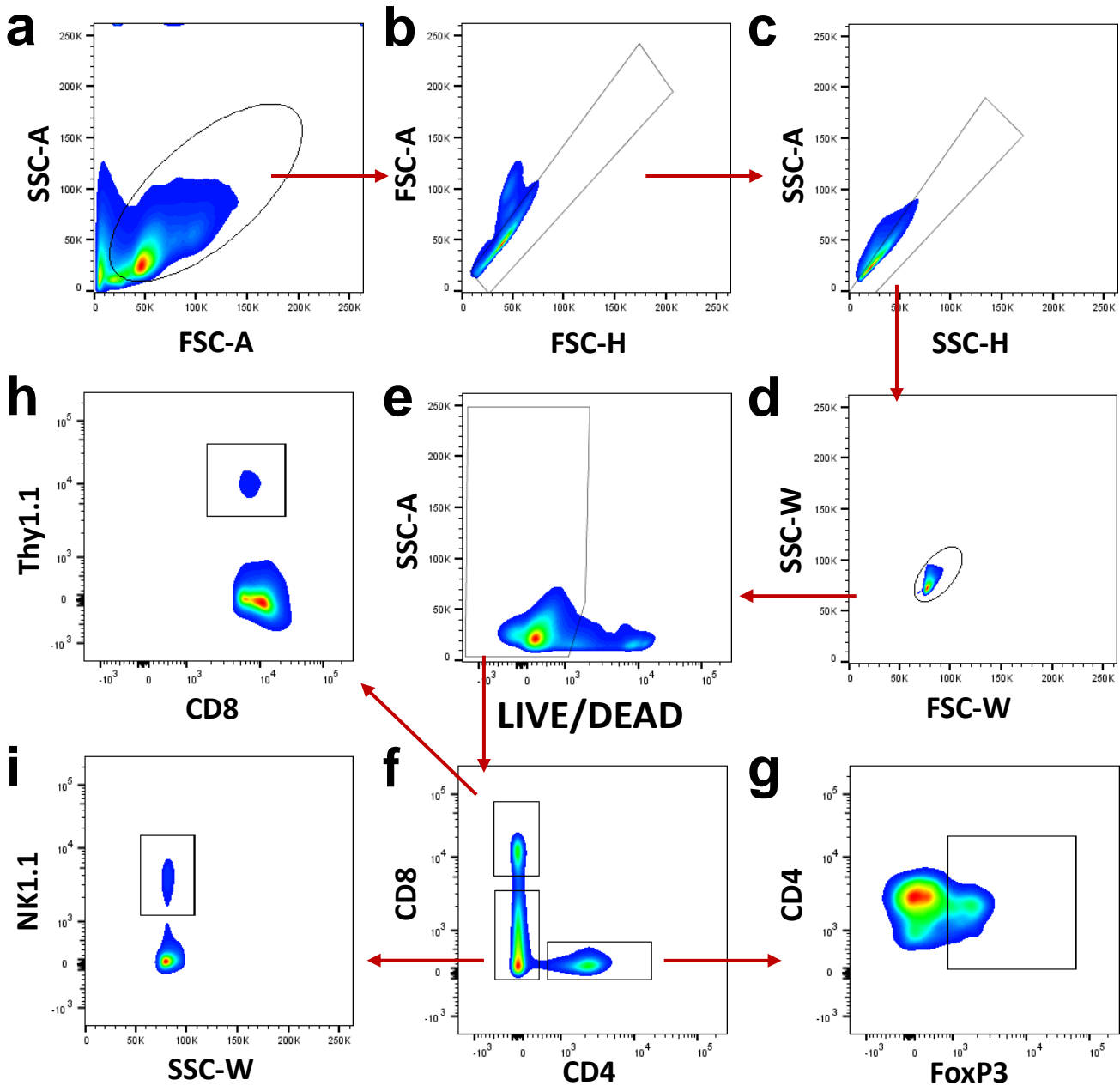


# Cancer Immunology, Immunotherapy (submitted in 2016) – Andrew Zloza et al.



**Supplementary Figure S1. Flow cytometry gating.** Schematic for flow cytometry analysis with gating on (a-d) singlet, (e) live, (f, g) CD4+ regulatory T cells, (f, h) Thy1.1-expressing Pmel CD8+ T cells, and (f, i) NK cells.