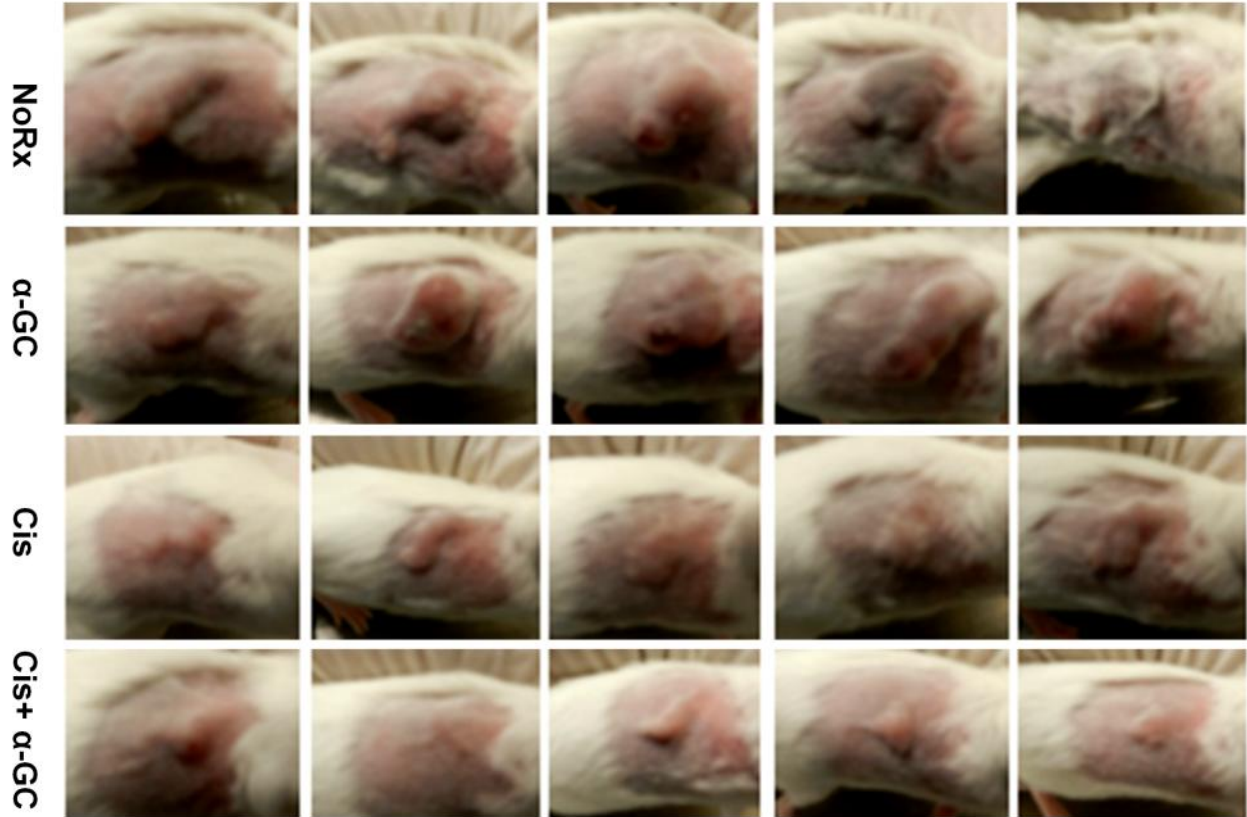


Supplementary Materials

Supplementary Figure 1

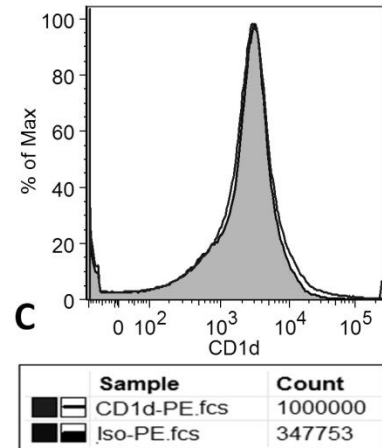
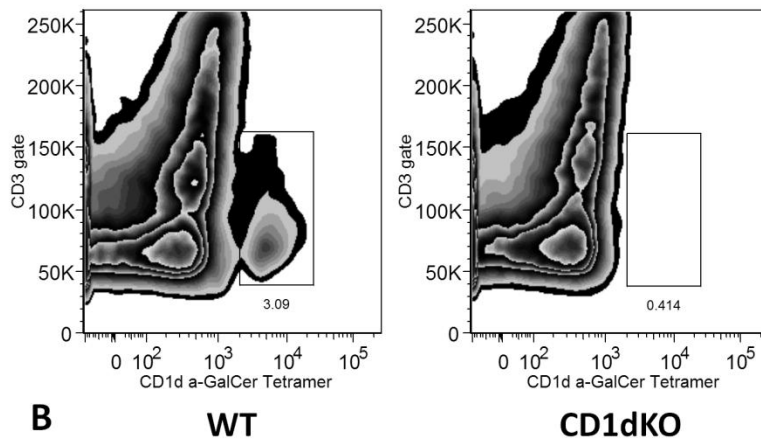
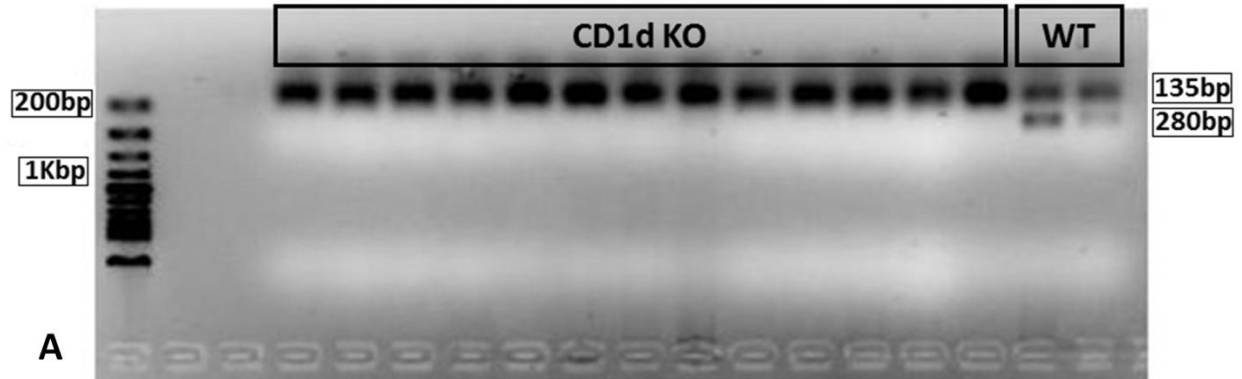
A representative experiment was on day 21 after tumor challenge of individual mouse.



Supplementary Figure 2

A. Genotyping to confirm CD1d knock out (CD1d KO): Strain Name: C. 129S2- *Cd1^{tm1Gru}/J*;

B. NKT in spleen of WT vs KO mice; C. CD1d expression on AB12 cells.



Supplementary Figure 3

In vitro cytotoxicity of the glycolipid α -GC in cultured AB12 cells, and Cis was used as positive control. After 24h exposure to different doses of the agent, cells were rinsed with PBS and stained with AnnexinV and Propidium iodide (PI) to determine cellular apoptosis and death by flow cytometry. A) AnnexinV staining: apoptosis was not seen in α -GC-treated cells, whereas Cis-induced apoptosis is dose-dependent; B) Quantitative analysis of Annexin V and PI staining after treatment with selected doses.

