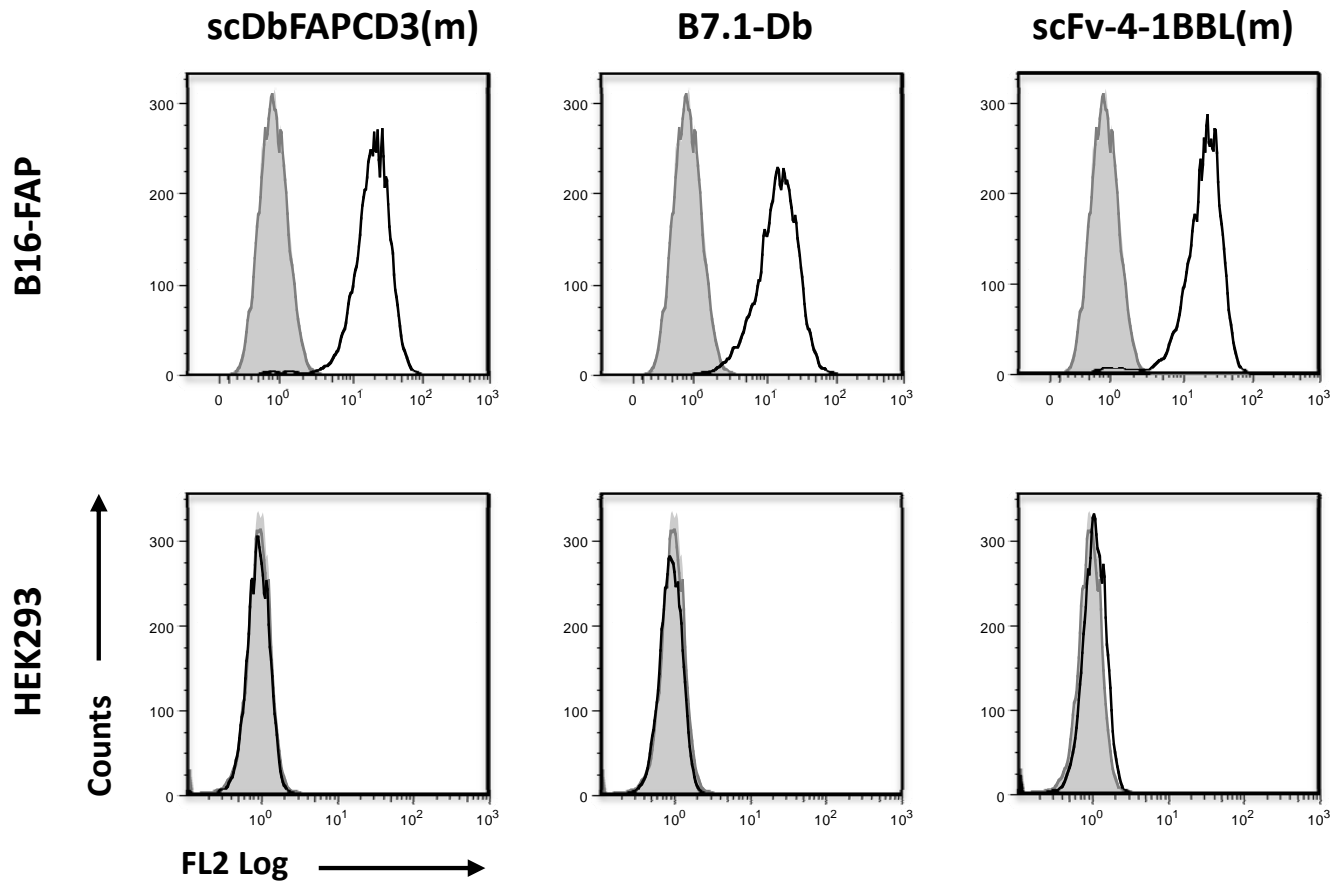


Supplementary data
Fig. S1



Binding analysis of the antibody fusion proteins scDbFAPCD3(m), B7.1-Db and scFv-4-1BBL(m) by flow cytometry. B16-FAP (hFAP⁺, mEDG⁺) and HEK293 (FAP⁻, EDG⁻) cells were incubated with 10 μ g/ml fusion protein. Bound construct were detected by an anti-hexahistidyl-tag-PE conjugated antibody. Grey filled: cells only; grey line: detection antibody only; black line: antibody-fusion protein followed by detection antibody.