

Figure S1. Cytokine levels (pg/ml) (mean \pm SEM) in superantants of a 5-days culture in immune-responders (□) and immune non-responders (■), tested at the the different timepoints* $p \leq 0.05$, ** $p < 0.01$.

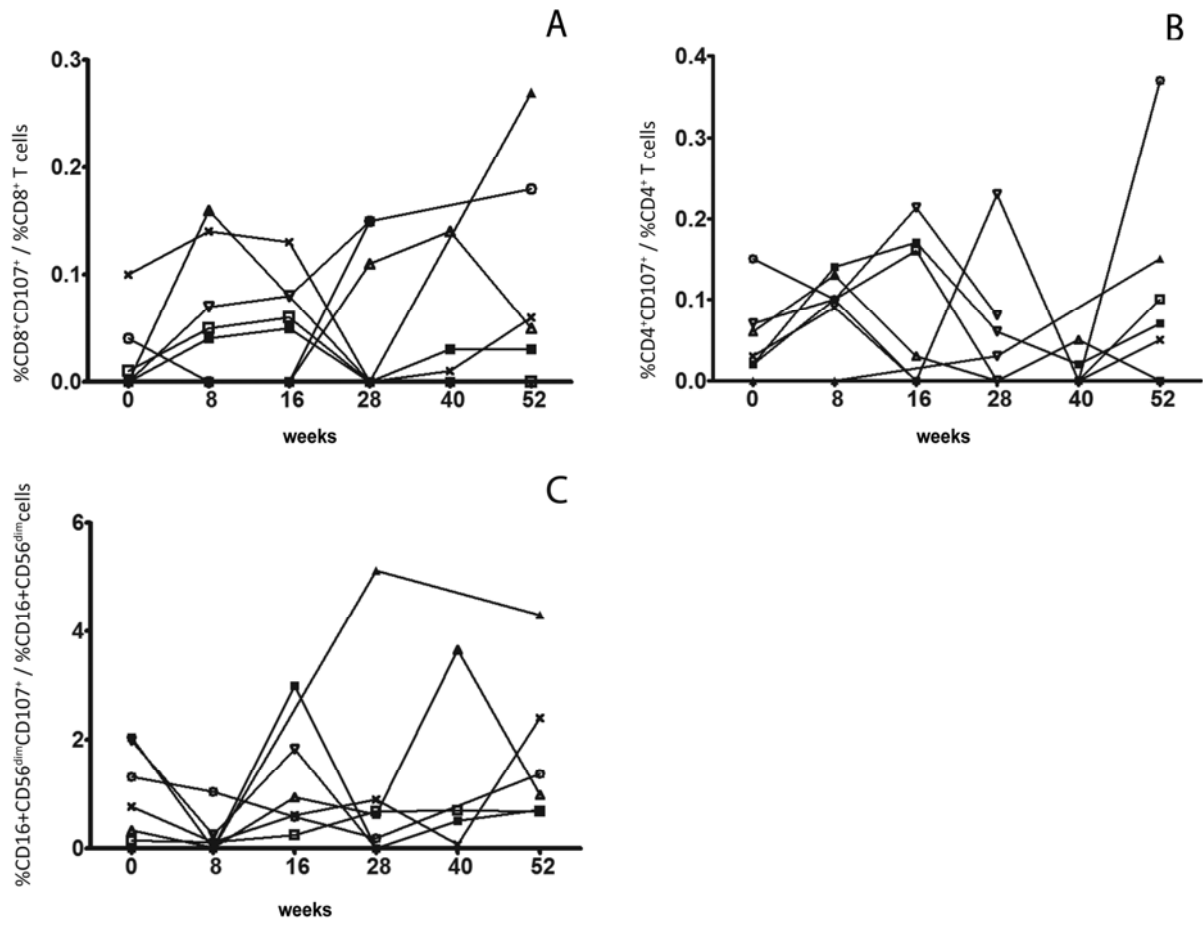


Figure S2. Frequency of degranulating CD8⁺ (A), CD4⁺ (B) T cells and CD16⁺CD56^{dim} NK cells (C) (n=8). Cell frequencies were normalized for the percentage of cells in the parent population. Lines represent individual patients.

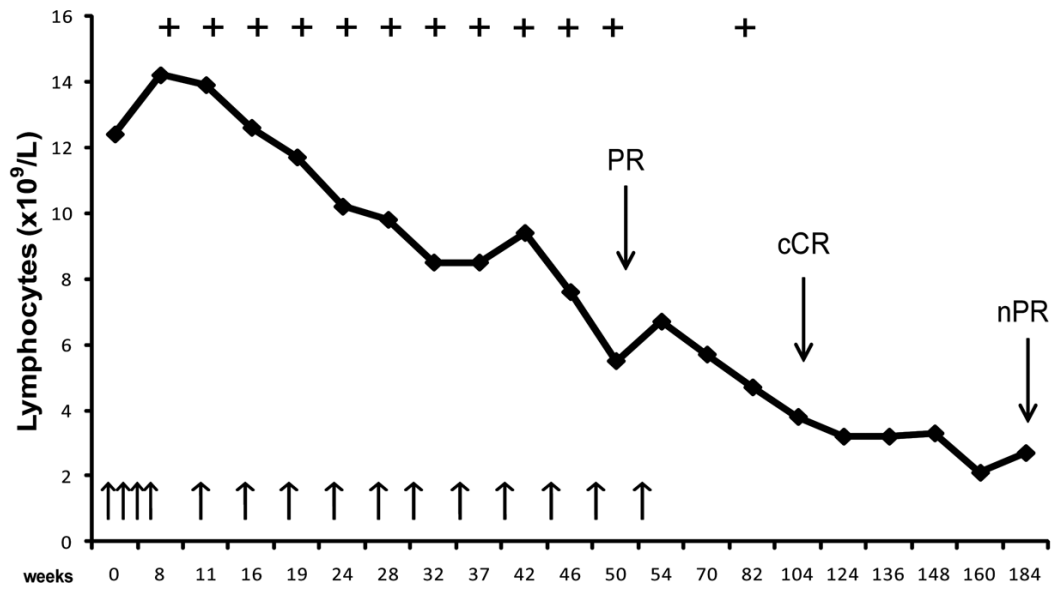


Figure S3. Blood lymphocyte count in Pt I-06 vaccinated with Apo-DC alone every two weeks till week 6, then every 4 weeks up to week 22 and after that together with GM-CSF every 4 weeks up to week 52. The lines with arrow heads indicate vaccine injections. (+) indicate vaccine-induced immune response. PR = partial response; cCR = clinical complete response; nPR = nodular partial response.