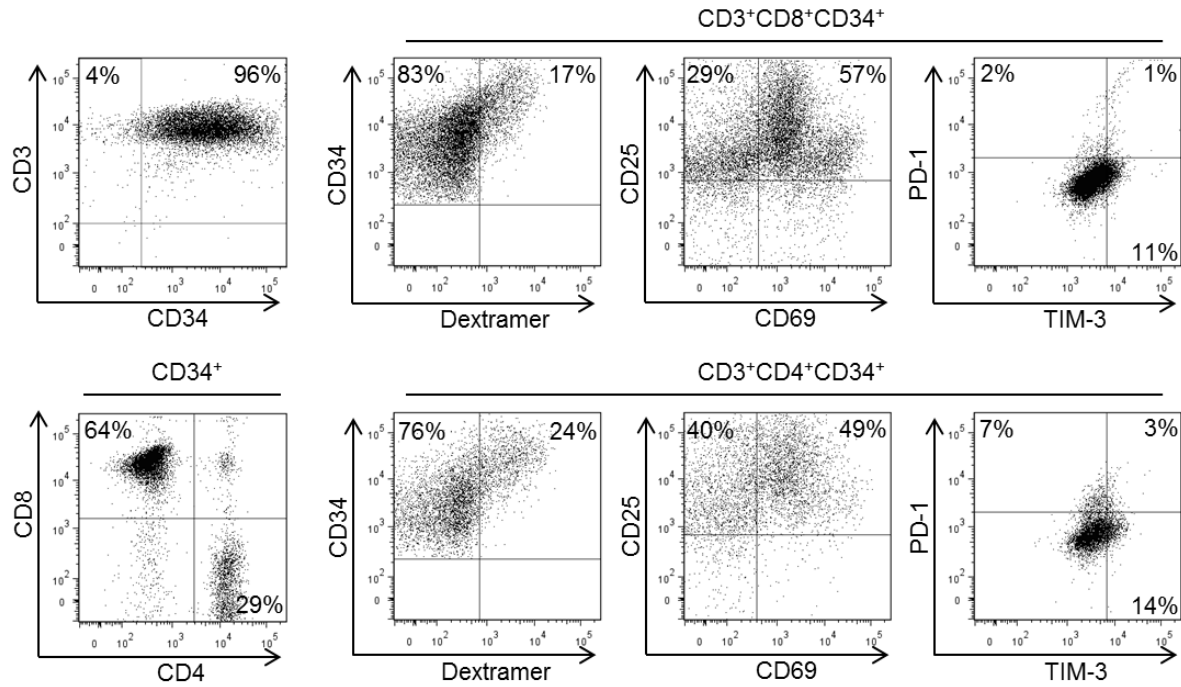


Supplementary figure S1 Dual-antigen recognition by HCV TCR 1406-transduced CMVpp65:495-503 peptide stimulated T cells. CMVpp65:495-503 peptide-stimulated T cells transduced with the HCV TCR (lower panels) or untransduced (upper panels) were cocultured with 624 MEL cells (left panels), 624 MEL cells expressing HCV NS3:1406-1415 mini-gene (middle panels), or 624 MEL cells expressing CMVpp65:495-503 mini-gene (right panels). The percentage of tetramer/IFN γ double-positive cells is shown in the upper right quadrant of each histogram



Supplementary figure S2 Immunofluorescence analysis of HCV1406 TCR-transduced T cells.

PBL, shown from a representative normal donor, were transduced with the HCV1406 TCR retroviral vector and immunomagnetically enriched for CD34⁺ expressing cells. Transduction efficiency post-selection was measured by CD34⁺ expression. Subpopulations of CD3⁺CD4⁺CD34⁺ and CD3⁺CD8⁺CD34⁺ were analyzed for HCV NS3:1406-1415 dextramer binding and markers of activation (CD25, CD69) or exhaustion (PD-1, TIM-3)