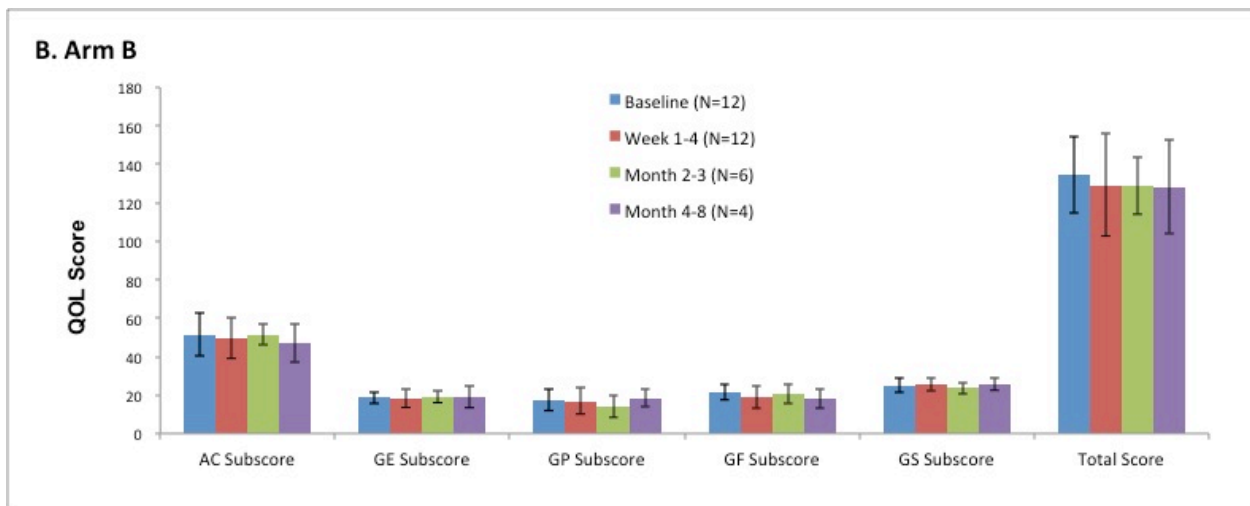
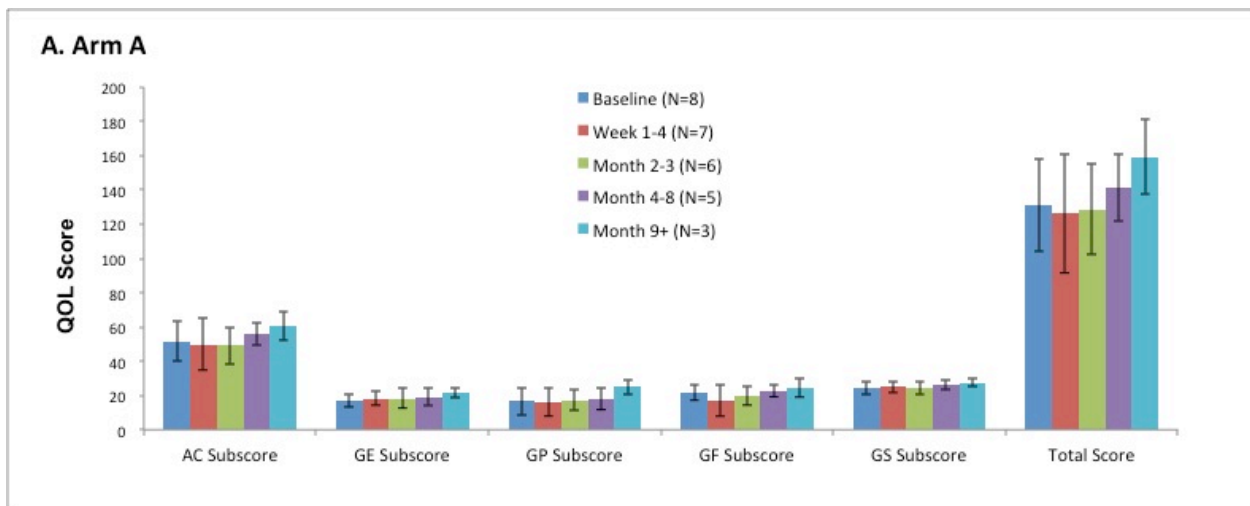


Supplementary Figure 1. Patient-reported outcomes of health-related quality of life (QOL) for Arm A resected patients (Fig. 1A) and Arm B (Fig. 1B) using FACT-Hep questionnaire before and after treatment. Results are average and standard deviation for each subscore and the total score for each time period. n=number of patients evaluated in each time period. AC-Additional Concerns specific to hepatobiliary cancer, GE-General Emotional, GP-General Physical, GF-General Functional, GS-General Social.



Supplementary Figure 2. PD-L1 expression in tumor before and after AdV-tk injection and prodrug course. Two examples are shown: Case # 1A03 from dose level 1 before (A) and after (B) AdV-tk injection and 14 days of valacyclovir; Case # 2A02 from dose level 2 before (C) and after (D) AdV-tk injection and 14 days of valacyclovir. Paraffin sections from pre-treatment biopsy (A and C) or post-treatment surgical resection (B and D) were stained with the anti-PD-L1 antibody.

