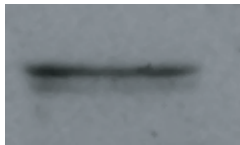




**GAPDH**  
(37 kD)



**HER-2/neu**  
(185 kD)



**c-Met**  
(170 kD)



**MAGE-1**  
(40 kD)



**EMMPRIIN**  
(~55 kD)

Supplementary data.

Western blot analysis of HER-2/neu, c-Met, MAGE-1 and EMMPRIN presence in PFP samples from patients. Representative western blot of three performed is presented. GAPDH was used as control.