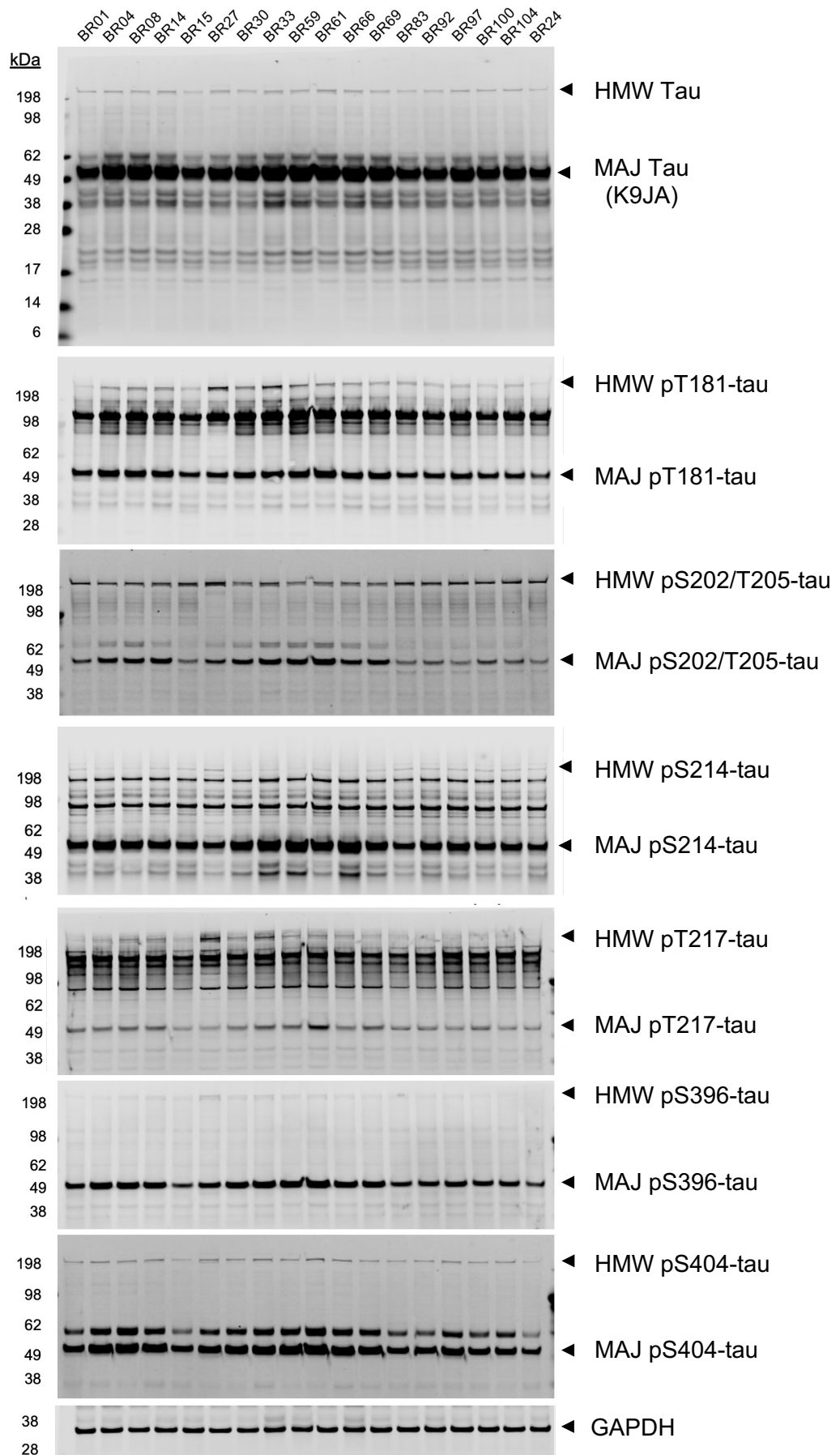


Supplemental Figure 3.



Supplemental Figure 3. Representative western blots of phospho-tau in ROSMAP iNs.

Example western blots stained for the major forms of 50-60 kDa (MAJ) tau and the high molecular weight (HMW) form of aggregated tau stained by the antibody recognizing: total tau (K9JA), pT181-tau, pS202/T205-tau, pS214-tau, pT217-tau, pS396-tau, and pS404-tau. GAPDH serves as loading control.