

Supplementary Material to “Phylomitogenomics of two Neotropical species of long-legged crickets *Endecous* Saussure, 1878 (Orthoptera: Phalangopsidae)”

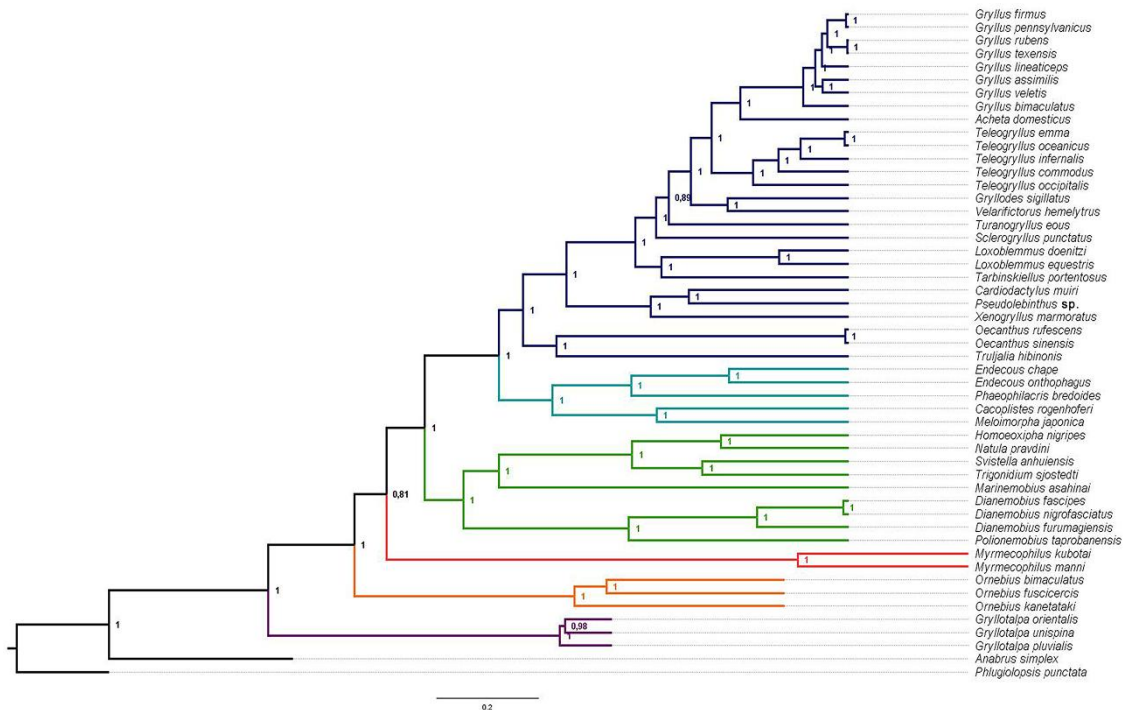


Figure S3 - Phylogenomic tree of infraorder Gryllidea inferred with the 13 PCGs using the Bayesian Inference (BI) method. Values next to the nodes indicate the posterior probabilities. Each branch color indicates the species family: purple Gryllotalpidae, orange Mogoplistidae, red Myrmecophilidae, green Trigonidiidae, dark green Phalangopsidae, and dark blue Gryllidae.