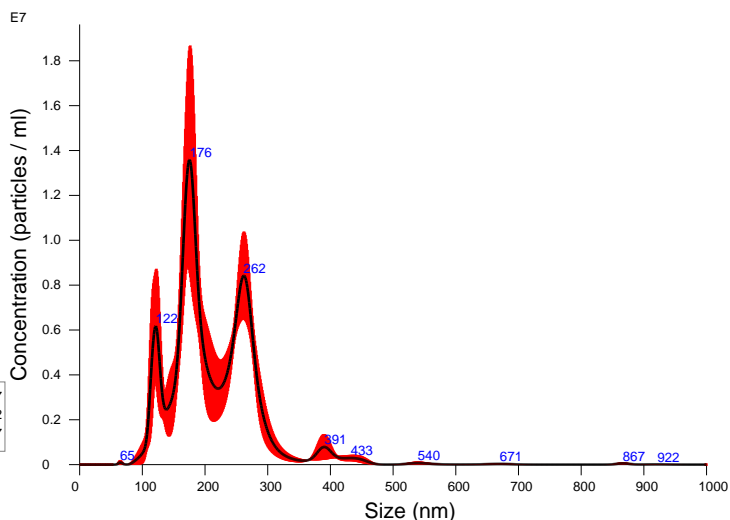


FTLA Concentration / Size graph for Experiment:
10K_1a10 2024-02-27 14-03-58



Averaged FTLA Concentration / Size for Experiment:
10K_1a10 2024-02-27 14-03-58
Error bars indicate + / -1 standard error of the mean

Included Files

10K_1a10 2024-02-27 14-04-07
10K_1a10 2024-02-27 14-05-12
10K_1a10 2024-02-27 14-08-27

Details

NTA Version: NTA 3.4 Build 3.4.4
Script Used: SOP Standard Measurement 02-03-42PM 27~
Time Captured: 14:03:58 27/02/2024
Operator:
Pre-treatment:
Sample Name:
Diluent:
Remarks:

Capture Settings

Camera Type: sCMOS
Laser Type: Blue488
Camera Level: 14
Slider Shutter: 1259
Slider Gain: 245
FPS: 25.0
Number of Frames: 1498
Temperature: 22.8 - 23.1 °C
Viscosity: (Water) 0.929 - 0.936 cP
Dilution factor: 1 x 10e1
Syringe Pump Speed: 30

Analysis Settings

Detect Threshold: 5
Blur Size: Auto
Max Jump Distance: Auto: 11.0 - 11.8 pix

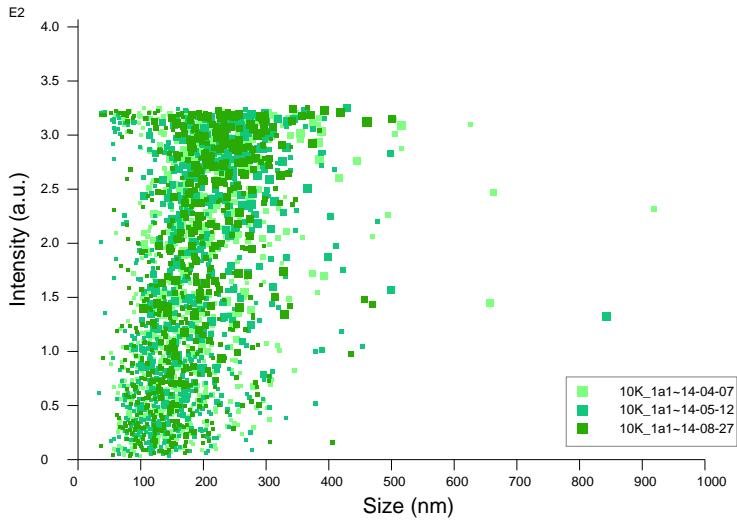
Results

Stats: Merged Data

Mean: 214.0 nm
Mode: 175.2 nm
SD: 74.6 nm
D10: 130.8 nm
D50: 195.8 nm
D90: 283.8 nm

Stats: Mean +/- Standard Error

Mean: 214.1 +/- 1.0 nm
Mode: 181.3 +/- 8.6 nm
SD: 73.9 +/- 4.5 nm
D10: 131.2 +/- 5.8 nm
D50: 197.9 +/- 6.7 nm
D90: 284.0 +/- 4.7 nm
Concentration (Upgrade): 1.16e+09 +/- 6.14e+07 particles/ml
20.2 +/- 1.1 particles/frame
23.5 +/- 1.3 centres/frame



Intensity / Size graph for Experiment:
10K_1a10 2024-02-27 14-03-58

Script Used: (Full Text):

SOP Standard Measurement 02-03-42PM 27Feb2024.txt